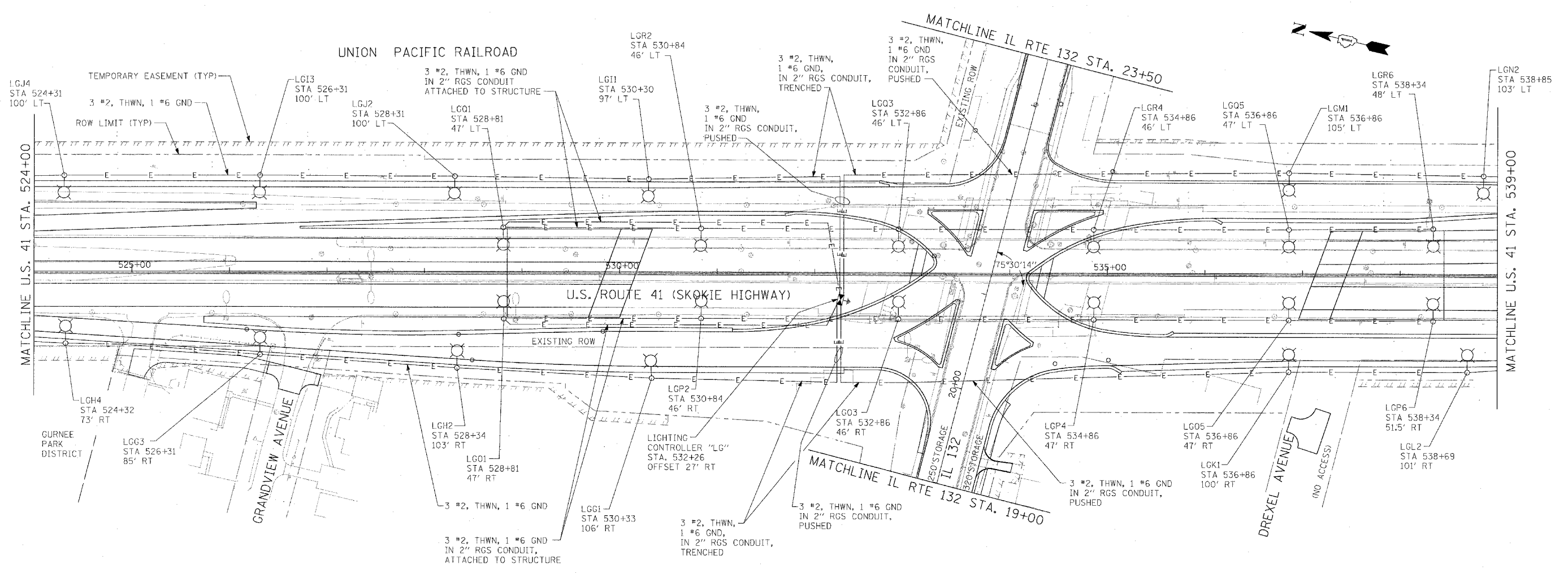


F.A.P. RTE.	SECTION	COUNTY	TOTAL SHEETS	SHEET NO.
120		LAKE	469	156
STA.		TO STA.		
FED. ROAD DIST. NO. D-91-404-99		ILLINOIS	FED. AID PROJECT	
• 125X-HB-(1&2) R-1				

PLAN	DATE
BY	
REVISIONS	
DATE	
BY	
REVISIONS	
DATE	
BY	

PROFILE	DATE
BY	
REVISIONS	
DATE	
BY	
REVISIONS	
DATE	
BY	



PLOT DATE = 5/14/2008  
FILE NAME = I:\US 41 - IL - 320\G000\414\PRM\TO\_41R2.dwg



REVISIONS	
NAME	DATE

ILLINOIS DEPARTMENT OF TRANSPORTATION  
U.S. 41 (SKOKIE HIGHWAY)  
AT IL ROUTE 132  
PROPOSED ROADWAY LIGHTING PLAN  
SHEET 2 OF 6  
US 41 - STA. 524+00 TO STA. 539+00  
SCALE: 1"=50'-0"  
DATE: 05/07/08  
DRAWN BY: FO  
CHECKED BY: DEM