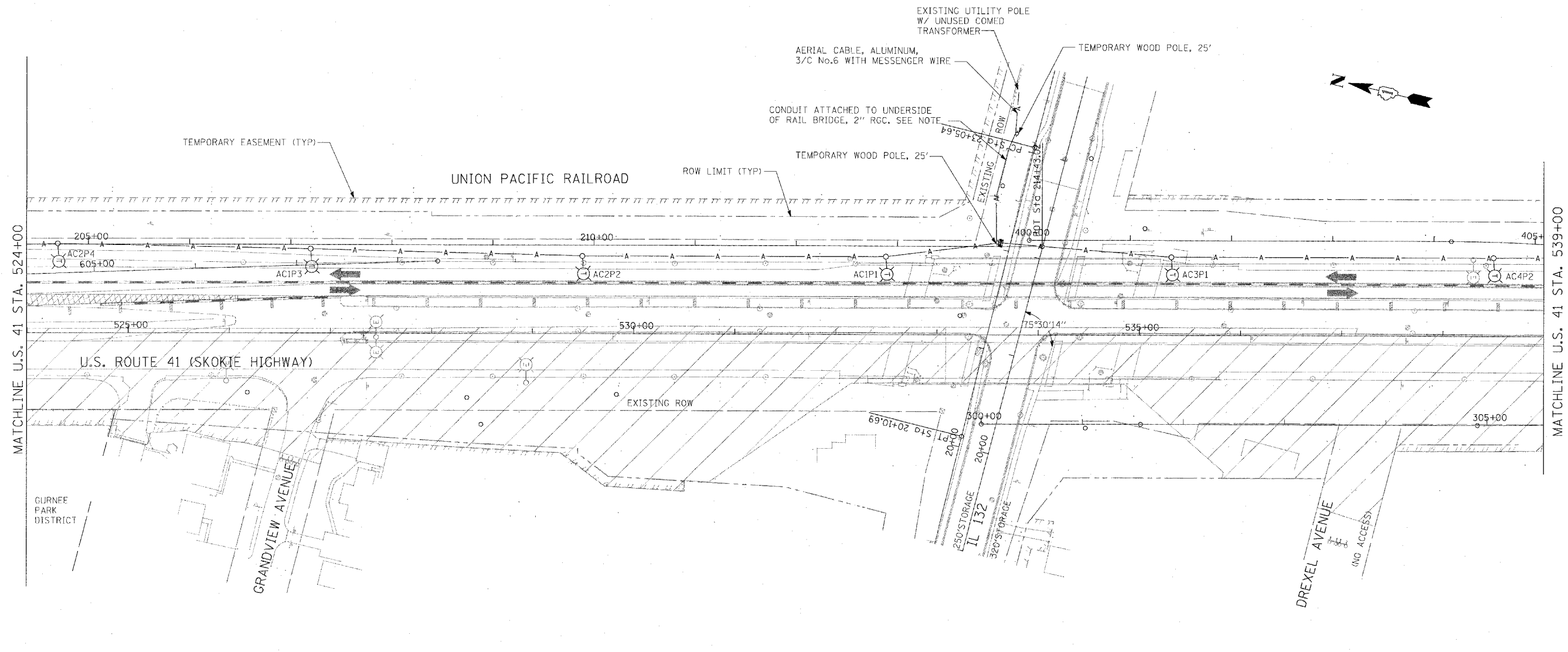


F.A.P. RTE.	SECTION	COUNTY	TOTAL SHEETS	SHEET NO.
120		LAKE	469	166
STA.		TO STA.		
FED. ROAD DIST. NO. D-91-404-99		ILLINOIS	FED. AID PROJECT	
• 125X-HB-(1&2) R-1				

DATE	BY

DATE	BY



NOTE:
 CONDUIT SHALL BE ATTACHED TO RAIL BRIDGE USING ONLY CLAMPS AND OTHER FITTINGS THAT WILL NOT PENETRATE OR DEFORM THE BRIDGE STRUCTURE. NO HOLES SHALL BE DRILLED IN BRIDGE STRUCTURE. ANY DAMAGE TO BRIDGE SURFACE COATING SHALL BE REPAIRED WHEN CONDUIT IS REMOVED. CONDUIT ENDS SHALL BE BUSHED TO PROTECT CABLE.



REVISIONS	
NAME	DATE

ILLINOIS DEPARTMENT OF TRANSPORTATION
 U.S. 41 (SKOKIE HIGHWAY)
 AT IL ROUTE 132
 TEMPORARY ROADWAY LIGHTING PLAN
 SHEET 2 OF 4
 US 41 - STA. 524+00 TO STA. 539+00
 SCALE: 1"=50'-0"
 DATE: 05/07/08
 DRAWN BY: FO
 CHECKED BY: DEM

PLOT DATE = 5/14/2008
 FILE NAME = I:\117\Lin\34593 - US 41 at IL 132\CA\DW\TEMP\10-a162.dwg