

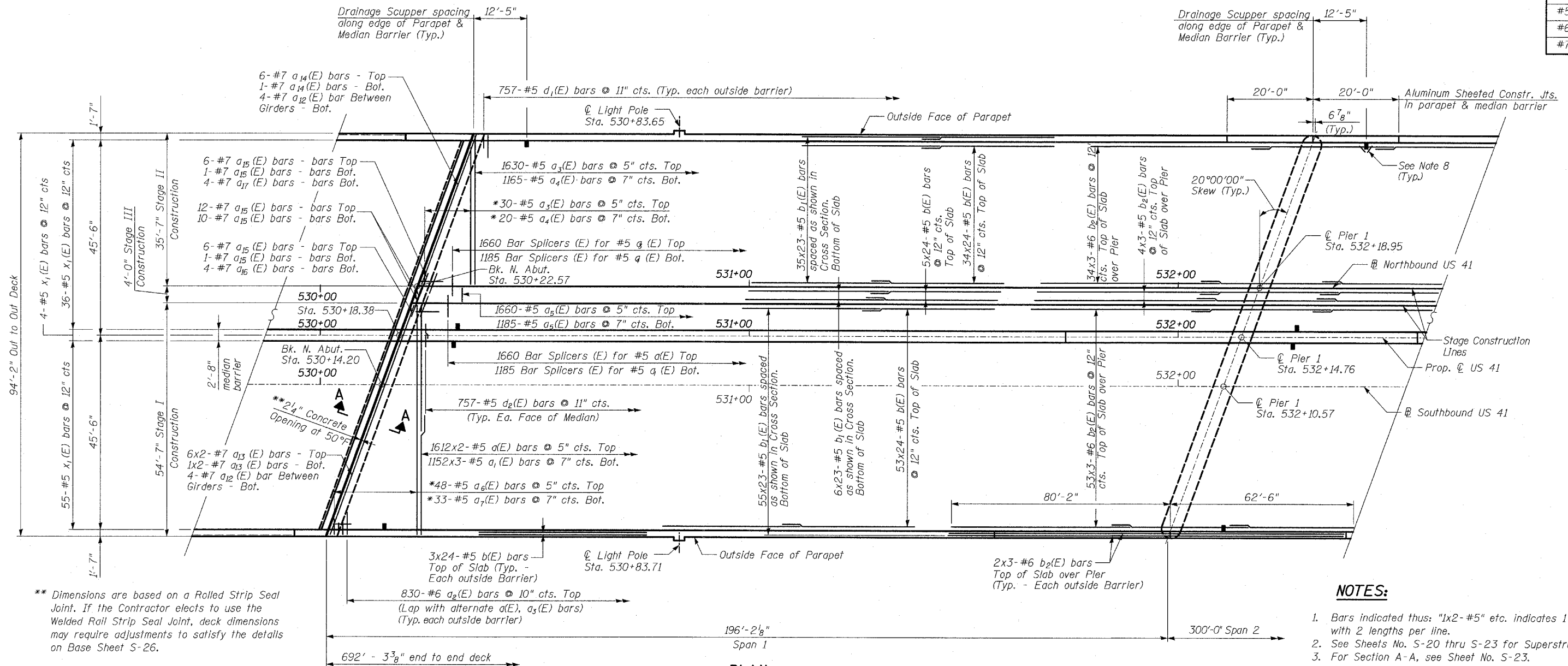
STATE OF ILLINOIS  
DEPARTMENT OF TRANSPORTATION

ROUTE NO.	SECTION	COUNTY	STATION	SHEET NO.	SHEET NO. - 5-17 S-66 SHEETS
346		LAKE	469	186	
FED. ROAD DIST. NO.		ILLINOIS	FED. AID PROJECT-		
			CONTRACT • 60826		

LAP SPLICES

Bar	Lap
#4	1'-8"
#5	2'-2"
#6	2'-7"
#7	3'-5"

\* Order  $a_3(E)$ ,  $a_4(E)$ ,  $a_6(E)$  &  $a_7(E)$  bars full length.  
Cut to fit skew and use remainder of bars in same stage, opposite end.

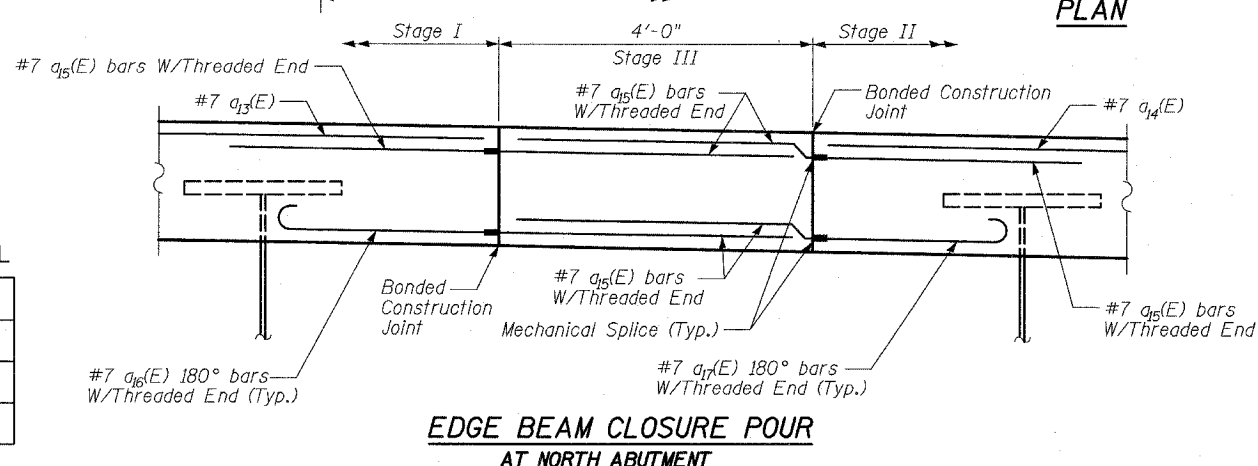


\*\* Dimensions are based on a Rolled Strip Seal Joint. If the Contractor elects to use the Welded Rail Strip Seal Joint, deck dimensions may require adjustments to satisfy the details on Base Sheet S-26.

- NOTES:**
1. Bars indicated thus: "1x2-#5" etc. indicates 1 line of bars with 2 lengths per line.
  2. See Sheets No. S-20 thru S-23 for Superstructure Details.
  3. For Section A-A, see Sheet No. S-23.
  4. See Sheet No. S-22A for Light Pole Mount Details.
  5. See Sheet No. S-23 for Superstructure Bill of Material.
  6. See Sheet No. S-28 for Bar Splicer (Assembly) Details.
  7. Work this Sheet with Sheets No. S-18 thru S-23.
  8. See Sheet No. S-23 for additional reinforcement at scuppers.

**TYLIN INTERNATIONAL**

DESIGNED	- SP
CHECKED	- AD
DRAWN	- SNB
CHECKED	- AD



EDGE BEAM CLOSURE POUR  
AT NORTH ABUTMENT

DECK CLOSURE POUR

**SUPERSTRUCTURE SPAN 1**

FAP 346 (U.S. ROUTE 41 - SKOKIE HIGHWAY) OVER ILLINOIS ROUTE 132  
SECTION 125X-HB-(1&2)R-1  
LAKE COUNTY  
S.N. 049-0209