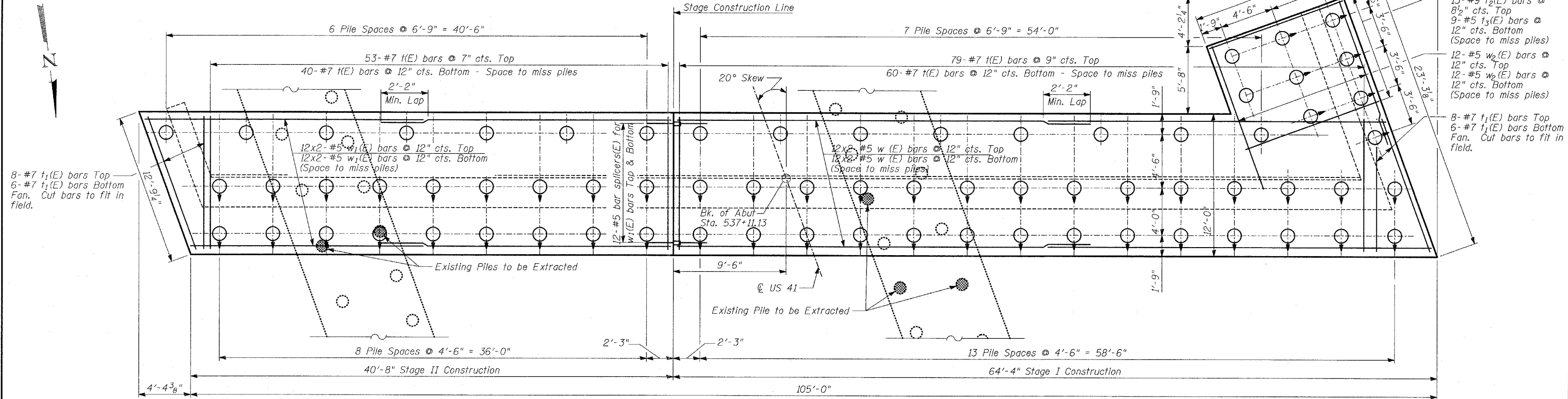


PILE DATA:

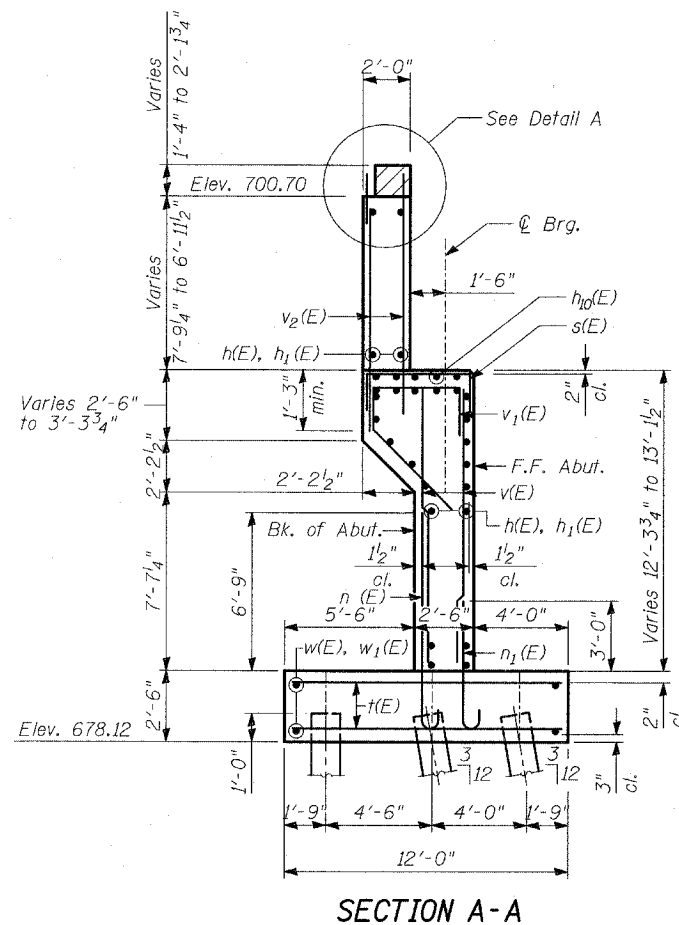
Type: 14" ϕ Metal Shell Piles w/ $\frac{3}{8}$ " Thick Walls
 Nominal Req'd Bearing: 390 kips
 Allowable Resist. Avail.: 130 kips
 Est. Length: 41'
 No. Required: 69 Piles and 1 Test Pile

STATE OF ILLINOIS
 DEPARTMENT OF TRANSPORTATION

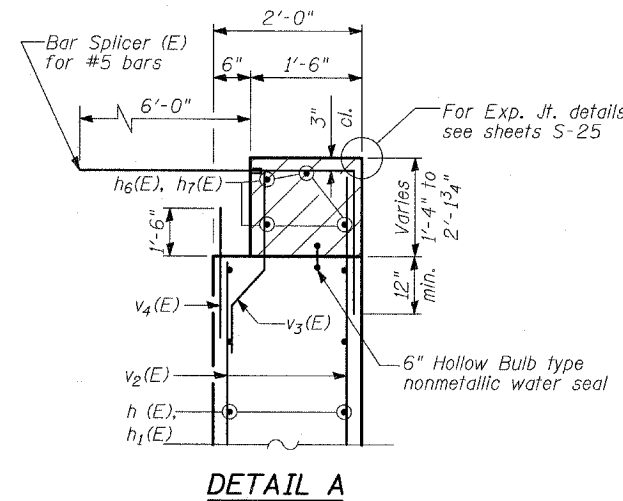
ROUTE NO.	SECTION	COUNTY	TOTAL SHEETS	SHEET NO.	SHEET NO. - S-42
346	*	LAKE	469	211	S-66-SHEETS
FED. ROAD DIST. NO.	ILLINOIS	FED. AID PROJECT-	CONTRACT # 60826		
* 125X-HB-(1&2) R-1					



FOOTING PLAN - SOUTH ABUTMENT



SECTION A-A



DETAIL A

NOTES

1. Reinforcement bars designated (E) shall be epoxy coated.
2. For details of Bar Splicers, see sheet S-28 of S-66.
3. Hatched area to be poured after superstructure false work has been removed. Quantity of concrete included with Concrete Superstructure.
4. Space reinforcement in cap to miss anchor bolts.
5. Pour steps monolithically with cap.

TYLIN INTERNATIONAL

DESIGNED	- SP
CHECKED	- AD
DRAWN	- SP, MAF
CHECKED	- AD

**SOUTH ABUTMENT
 DETAILS II**

FAP 346 (U.S. ROUTE 41 - SKOKIE
 HIGHWAY) OVER ILLINOIS ROUTE 132
 SECTION 125X-HB-(1&2)R-1
 LAKE COUNTY
 S.N. 049-0209