

Benchmark: BM #6 - Square cut in base of L.P. at N.E. corner of IL Route 132 and Magnolia (Speedway) 45.14' LT, Sta. 32+13.24 (IL 132 E.B. @), Elev. 696.47.

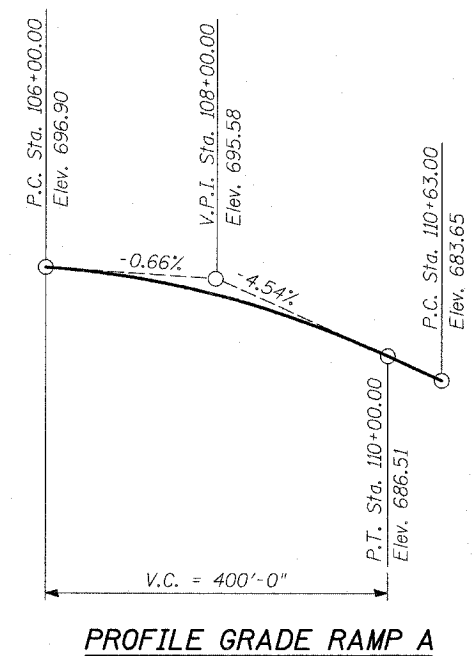
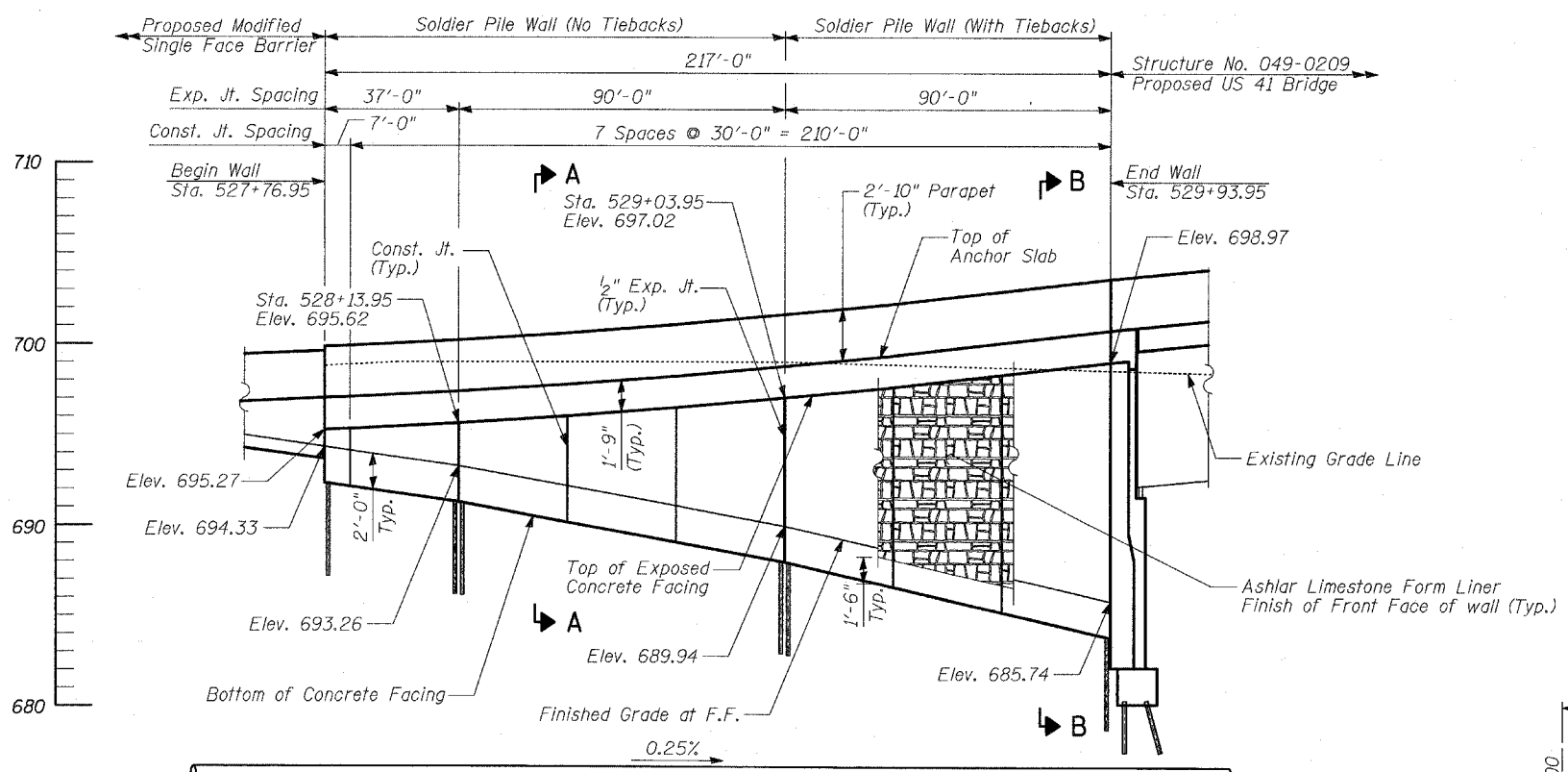
Existing Structure: None.

STATE OF ILLINOIS
DEPARTMENT OF TRANSPORTATION

ROUTE NO.	SECTION	COUNTY	SHEET NO.	SHEET	SHEET NO. - 1
346	*	LAKE	469	251	15 SHEETS

125X-HB-(1&2) R-1 CONTRACT # 60826
TOTAL BILL OF MATERIAL

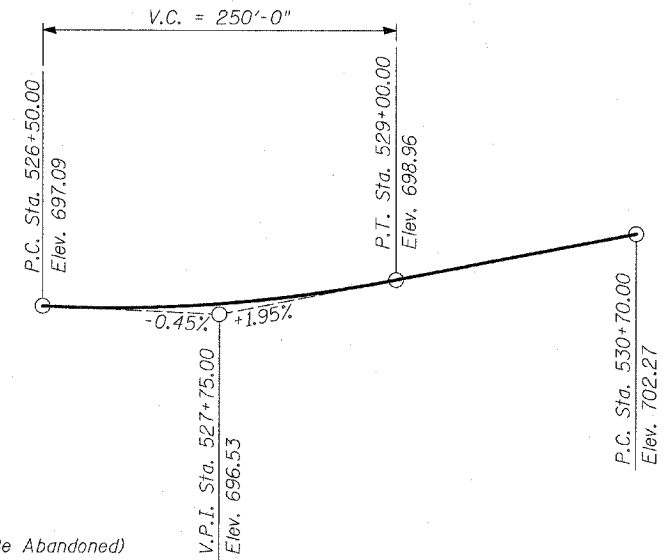
ITEM	UNIT	TOTAL
Structure Excavation	CU YD	537
Concrete Structures	CU YD	112
Concrete Superstructure	CU YD	149
Protective Coat	SQ YD	332
Form Liner Textured Surface	SQ YD	171
Furnishing and Erecting Structural Steel	POUND	4,660
Stud Shear Connectors	EACH	330
Untreated Timber Lagging	SQ FT	1,536
Furnishing Soldier Piles (W Section)	FOOT	937
Reinforcement Bars, Epoxy Coated	POUND	27,110
Geocomposite Wall Drain	SQ YD	183
Pipe Underdrains for Structures, 4"	FOOT	217
Drilling and Setting Soldier Piles (In Soil)	CU FT	5,098
Anti Graffiti Coating	SQ FT	2,404



- LEGEND**
- ⊙ - Manhole
 - - Catch Basin
 - ⊕ - Soil Boring
 - - Prop. Storm Sewer
 - - Exist. Drain Pipe
 - - Proposed Drainage Swale

ELEVATION
(Looking at F.F.)

Proposed 24" Storm Sewer
Inv. Elev. 679.5 ± at end of wall



PROFILE GRADE U.S. 41 S.B.

DESIGN SPECIFICATIONS

2002 AASHTO Standard Specifications For Highway Bridges

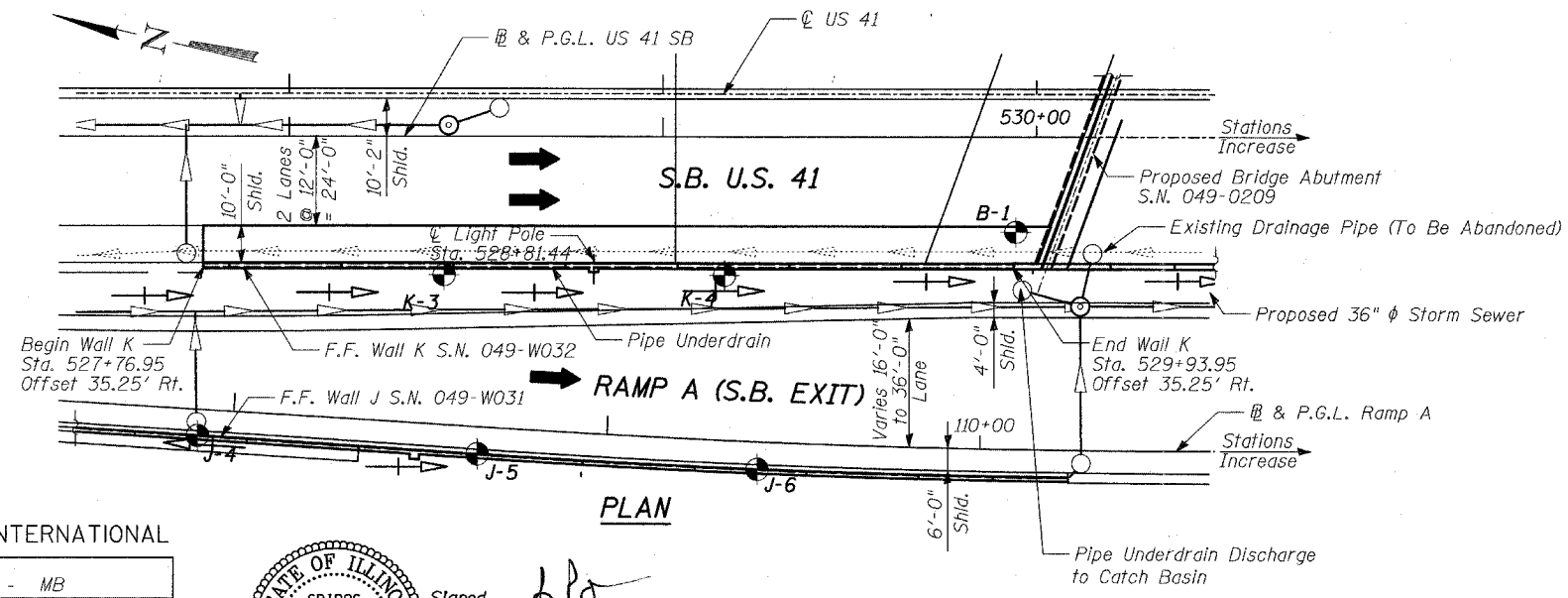
DESIGN STRESSES

FIELD UNITS

- $f'_c = 3,500$ psi
- $f_y = 60,000$ psi (reinforcement)
- $f_y = 36,000$ psi (structural steel M270 Grade 36)
- $f'_s = 150,000$ psi (tie rods)

NOTES:

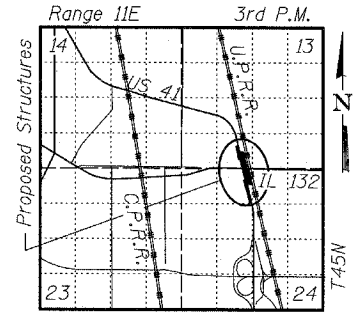
1. Wall stations and offsets are given to the front face of the concrete facing, and are measured from US 41 SB Baseline.
2. Existing utilities in conflict with soldier pile wall construction shall be abandoned or relocated according to direction given in roadway plans.
3. Reinforcement bars shall conform to the requirements of ASTM A 706 Gr. 60 (IL Modified). See Special Provisions.
4. Reinforcement bars designated (E) shall be epoxy coated.
5. All exposed concrete edges shall be chamfered $\frac{3}{4}$ " except as noted.
6. Slipforming of the parapet is not allowed.
7. All construction joints shall be bonded.
8. Soldier Pile Wall design can accommodate disturbance in front of wall for installation of proposed storm sewer. Lagging pay limits are to proposed bottom of C.I.P. concrete facing.



PLAN

APPROVED
FOR STRUCTURAL ADEQUACY ONLY

Robert E. Anderson (TIT)
ENGINEER OF BRIDGES AND STRUCTURES



LOCATION SKETCH

INDEX OF SHEETS

1. WALL K GENERAL PLAN, STA 527+76.95 TO 529+93.95
2. WALL K PLAN AND ELEVATION, STA 527+76.95 TO 528+13.95
3. WALL K PLAN AND ELEVATION, STA 528+13.95 TO 529+03.95
4. WALL K PLAN AND ELEVATION, STA 529+03.95 TO 529+93.95
5. WALL K SECTIONS AND DETAILS (1 OF 2)
6. WALL K SECTIONS AND DETAILS (2 OF 2)
7. WALL K TIE BACK AND DEADMAN DETAILS
8. WALL K ANCHORAGE SLAB AND PARAPET (1 OF 2)
9. WALL K ANCHORAGE SLAB AND PARAPET (2 OF 2)
10. WALL K MISCELLANEOUS DETAILS
11. WALL K RUSTICATION DETAILS
12. BORING LOG K3
13. BORING LOG K4
14. BORING LOG B1 (1 OF 2)
15. BORING LOG B1 (2 OF 2)

**WALL K
GENERAL PLAN
STA 527+76.95 TO STA 529+93.95**

FAP 346 (U.S. ROUTE 41 - SKOKIE
HIGHWAY) OVER ILLINOIS ROUTE 132
SECTION 125X-HB-(1&2)R-1
LAKE COUNTY
S.N. 049-W032

TYLIN INTERNATIONAL

DESIGNED	- MB
CHECKED	- AD
DRAWN	- DE
CHECKED	- CM/AD



Signed *[Signature]*
Spiros Pantazis, S.E. Il. Lic. No. 081-006448
For drawings 1 thru 15 of 15
Date 5/14/08