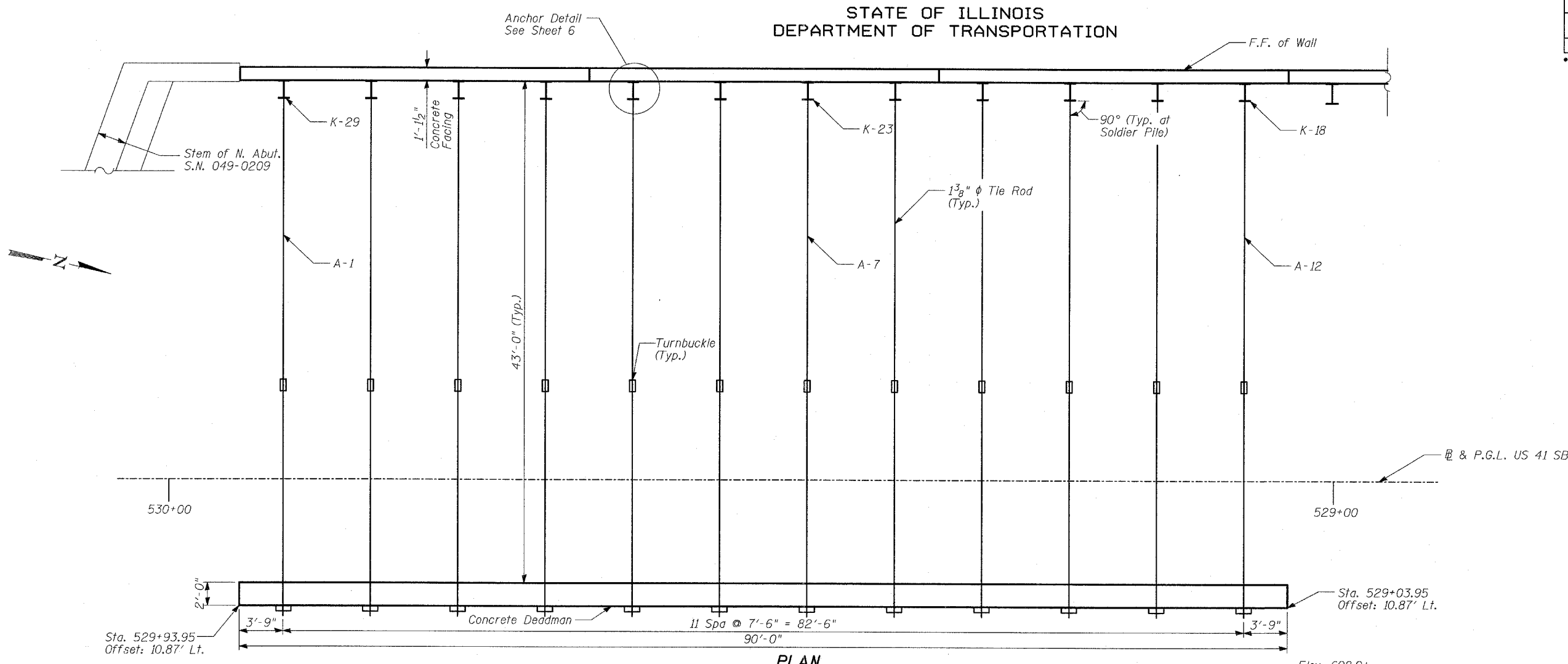


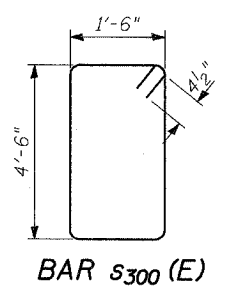
STATE OF ILLINOIS
DEPARTMENT OF TRANSPORTATION

ROUTE NO.	SECTION	COUNTY	TOTAL SHEETS	SHEET NO.	SHEET NO. - 7
346	*	LAKE	469	257	15 SHEETS
FED. ROAD DIST. NO.		ILLINOIS	FED. AID PROJECT-		
* 125X-HB-(1&2) R-1		CONTRACT # 60826			

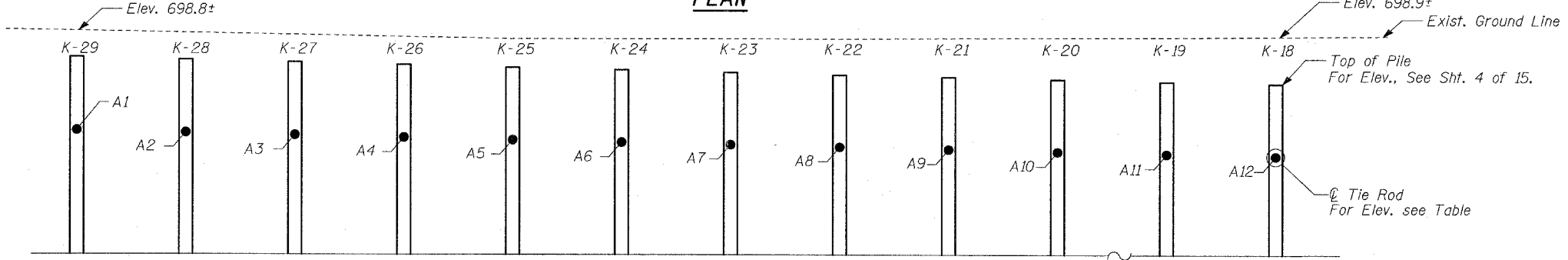


ANCHOR TIE ROD

Anchor Tie Rod	Elevation
A1	694.0
A2	693.9
A3	693.7
A4	693.5
A5	693.3
A6	693.2
A7	693.0
A8	692.8
A9	692.7
A10	692.5
A11	692.4
A12	692.2



PLAN

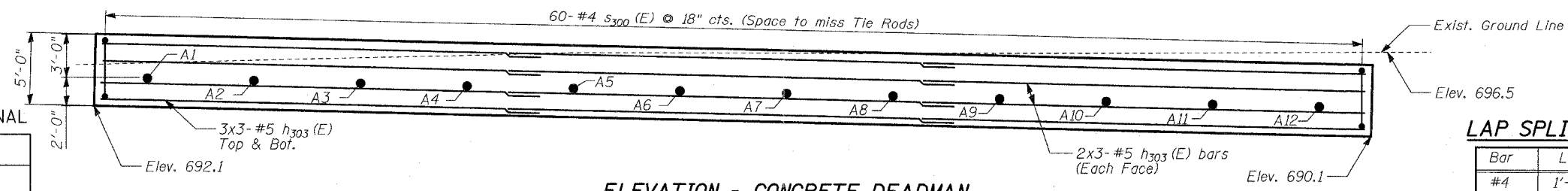


ELEVATION - SOLDIER PILES

(Looking West)

DEADMAN BAR LIST AND BILL OF MATERIAL

Bar	No.	Size	Length	Shape
h303 (E)	30	#5	31'-4"	—
s300 (E)	60	#4	12'-9"	□
Reinforcement Bars, Epoxy Coated			POUND	1,500
Concrete Structures			CU YD	34
Furnishing and Erecting Structural Steel			POUND	4,660
Structure Excavation			CU YD	271



ELEVATION - CONCRETE DEADMAN

(Looking West)

LAP SPLICES

Bar	Lap
#4	1'-8"
#5	2'-2"
#6	2'-7"
#8	4'-6"

TYLIN INTERNATIONAL

DESIGNED	- MB
CHECKED	- AD
DRAWN	- CM
CHECKED	- AD

**WALL K
TIE BACK AND DEADMAN DETAILS**

FAP 346 (U.S. ROUTE 41 - SKOKIE HIGHWAY) OVER ILLINOIS ROUTE 132
SECTION 125X-HB-(1&2)R-1
LAKE COUNTY
S.N. 049-W032