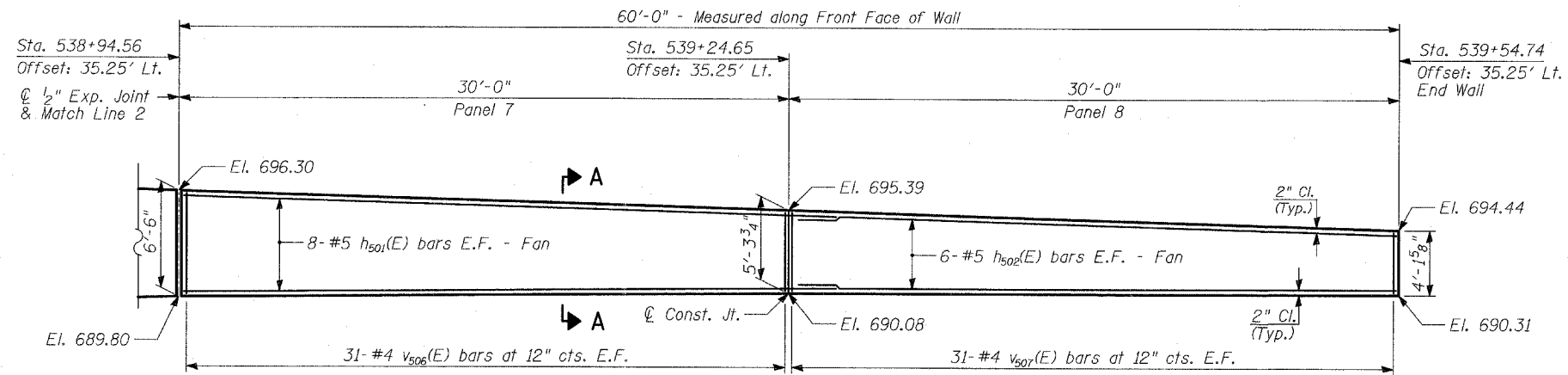


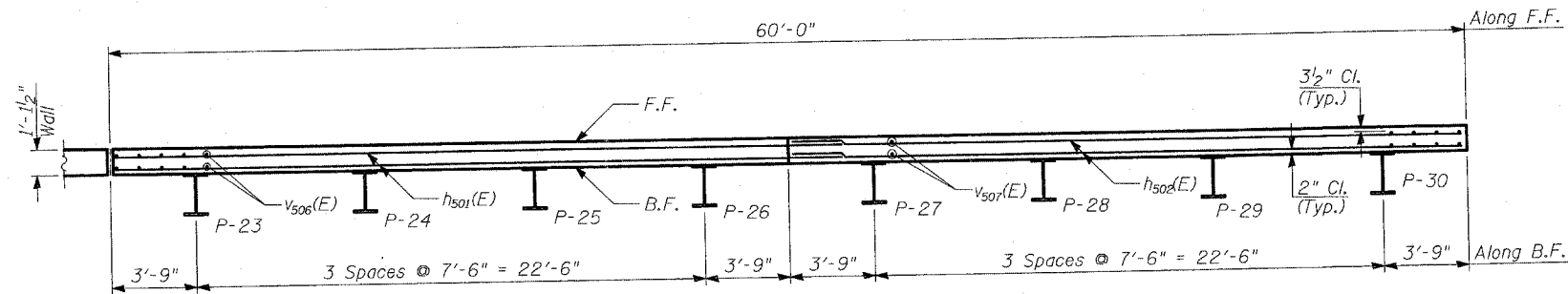
STATE OF ILLINOIS
DEPARTMENT OF TRANSPORTATION

ROUTE NO.	SECTION	COUNTY	TOTAL SHEETS	SHEET NO.	SHEET NO. - 4 16 SHEETS
346	*	LAKE	469	338	
FED. ROAD DIST. NO.	ILLINOIS	FED. AID PROJECT	CONTRACT # 60826		



ELEVATION

(Offsets are Given From US41 NB Baseline to F.F. of Wall)



PLAN

(Wall to be built along straight chords between construction joints)

PILE SUMMARY

Pile Label	Pile Size	Length	Top of Pile Elevation	Bot. of Pile Elevation
P-23	W21x111	29'-11"	694.7	664.8
P-24	W21x111	29'-11"	694.5	664.5
P-25	W21x111	29'-11"	694.2	664.3
P-26	W21x111	29'-11"	694.0	664.1
P-27	W21x111	28'-8"	693.8	665.1
P-28	W21x111	28'-8"	693.5	664.9
P-29	W21x111	28'-8"	693.3	664.6
P-30	W21x111	28'-8"	693.1	664.4

TYLIN INTERNATIONAL

DESIGNED	- MB
CHECKED	- AD
DRAWN	- TB
CHECKED	- AD

LAP SPLICES

Bar	Lap
#4	1'-8"
#5	2'-2"
#6	2'-7"
#8	4'-6"

NOTES:

1. B.F. - denotes Back Face.
2. E.F. - denotes Each Face.
3. F.F. - denotes Front Face.
4. Work this Sheet with Sheets 5 thru 11 of 16.
5. Pile spacing measured along back face of wall.
6. For Bill of Material, see Sheet 2 of 16.
7. For Section A-A, See Sheet 5 of 16.

**WALL P
PLAN AND ELEVATION
STA 538+94.56 TO STA 539+54.74**

FAP 346 (U.S. ROUTE 41 - SKOKIE
HIGHWAY) OVER ILLINOIS ROUTE 132
SECTION 125X-HB-(1&2)R-1
LAKE COUNTY
S.N. 049-W037