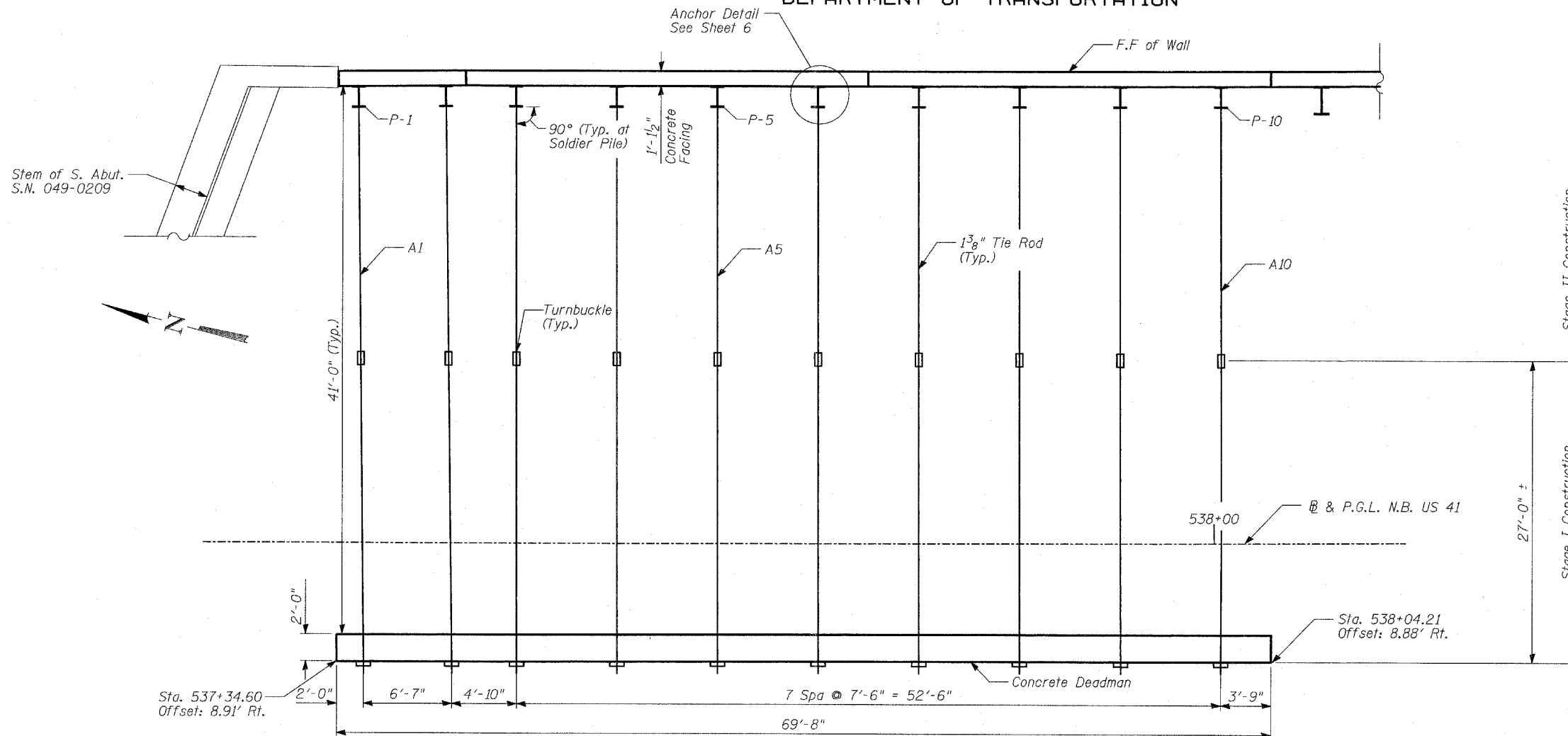


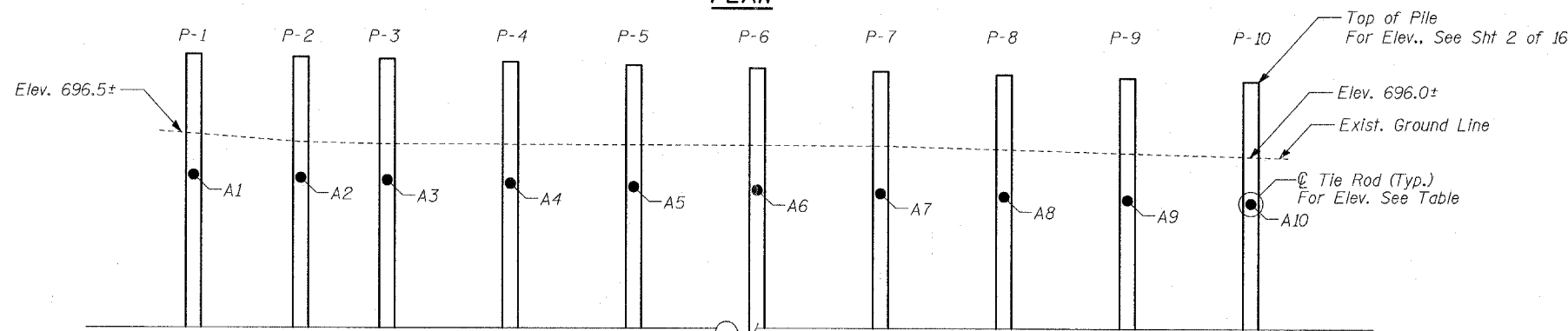
STATE OF ILLINOIS
DEPARTMENT OF TRANSPORTATION

ROUTE NO.	SECTION	COUNTY	TOTAL SHEETS	SHEET NO.
346	*	LAKE	469	341
FED. ROAD DIST. NO.	ILLINOIS	FED. AID PROJECT		
			CONTRACT # 60826	

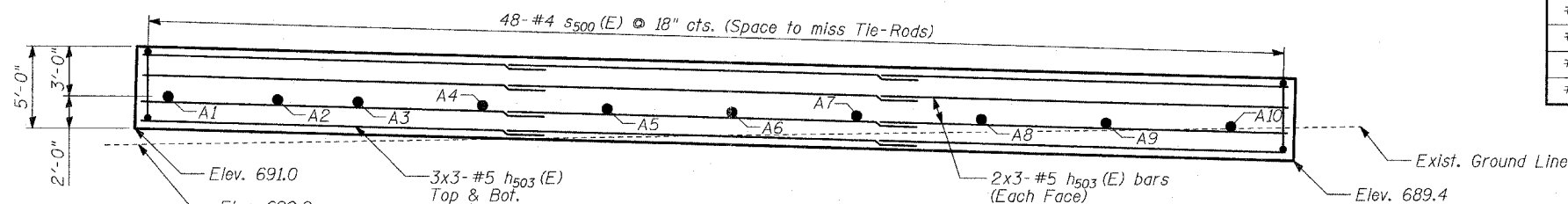
SHEET NO. - 7
16 SHEETS



PLAN



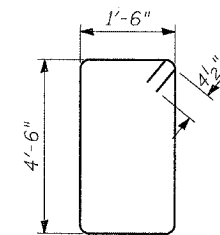
ELEVATION - SOLDIER PILES
(Looking West)



ELEVATION - CONCRETE DEADMAN
(Looking West)

ANCHOR TIE ROD

Anchor Tie Rod	Elevation
A1	693.0
A2	692.9
A3	692.7
A4	692.6
A5	692.4
A6	692.2
A7	692.0
A8	691.8
A9	691.6
A10	691.4



BAR #300 (E)

DEADMAN BAR LIST AND
BILL OF MATERIAL

Bar	No.	Size	Length	Shape
#503 (E)	30	#5	24'-7"	—
#500 (E)	48	#4	12'-9"	□
Reinforcement Bars, Epoxy Coated			POUND	1,180
Concrete Structures			CU YD	26
Furnishing and Erecting Structural Steel			POUND	3,780
Structure Excavation			CU YD	55

NOTES:

1. Install Concrete Deadman and portion of Tie Rod as indicated during Stage I Construction.
2. Install Turnbuckle and remaining section of Tie Rod along with Soldier Piles in Stage II Construction.

LAP SPLICES

Bar	Lap
#4	1'-8"
#5	2'-2"
#6	2'-7"
#8	4'-6"

WALL P
TIE BACK AND DEADMAN DETAILS

FAP 346 (U.S. ROUTE 41 - SKOKIE HIGHWAY) OVER ILLINOIS ROUTE 132
SECTION 125X-HB-(1&2)R-1
LAKE COUNTY
S.N. 049-W037

TYLIN INTERNATIONAL

DESIGNED	- MB
CHECKED	- AD
DRAWN	- CM
CHECKED	- AD