

STATE OF ILLINOIS
DEPARTMENT OF TRANSPORTATION

ROUTE NO.	SECTION	COUNTY	SHEET NO.	SHEET NO.
346		LAKE	469	356
FED. ROAD DIST. NO.		ILLINOIS	FED. AID PROJECT-	
125X-HB-(1&2) R-1		CONTRACT # 60826		

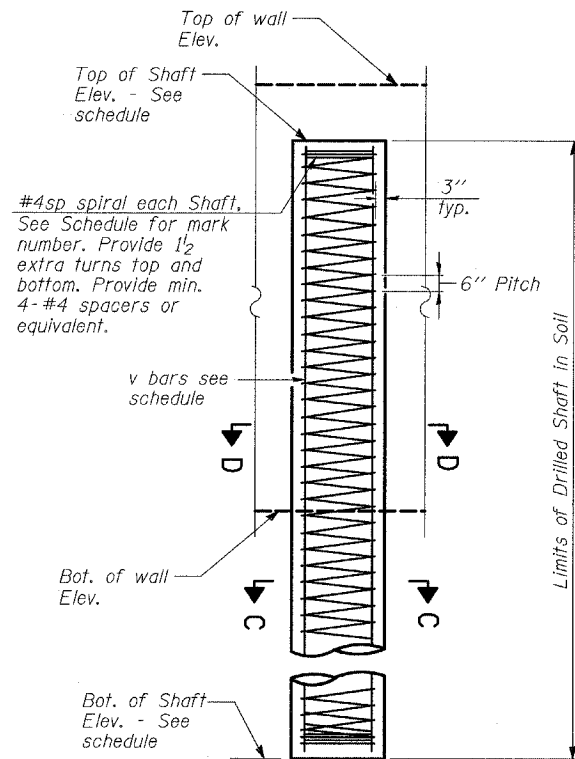
BAR TABLE SCHEDULE

Bar	No. of Sets Required	No. of Bars Per Set	A	B	C
V700(E)	1	30	11'-0"	13'-7"	24'-7"
V702(E)	1	31	13'-6"	16'-0"	29'-6"
V703(E)	1	31	16'-0"	15'-1"	31'-1"
V704(E)	1	31	15'-1"	13'-11"	29'-0"
V705(E)	1	31	13'-11"	12'-6"	26'-5"
V706(E)	1	31	12'-6"	10'-11"	23'-5"
V707(E)	1	31	10'-11"	9'-4"	20'-3"
V708(E)	1	31	9'-4"	8'-0"	17'-4"
V709(E)	1	31	8'-0"	6'-8"	14'-8"
V710(E)	1	31	6'-8"	5'-4"	12'-0"

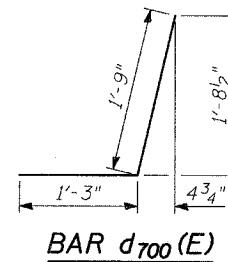
BAR LIST AND BILL OF MATERIAL

Bar	Number	Size	Length	Shape
d700(E)	854	#5	3'-0"	J
h700(E)	30	#5	28'-8"	—
h701(E)	30	#5	19'-5"	—
h702(E)	166	#5	32'-0"	—
h703(E)	72	#5	29'-8"	—
h704(E)	30	#5	4'-8"	—
V700(E)	30	#4	24'-7"	—
V701(E)	42	#4	13'-6"	—
V702(E)	31	#4	29'-6"	—
V703(E)	31	#4	31'-1"	—
V704(E)	31	#4	29'-0"	—
V705(E)	31	#4	26'-5"	—
V706(E)	31	#4	23'-5"	—
V707(E)	31	#4	20'-3"	—
V708(E)	31	#4	17'-4"	—
V709(E)	31	#4	14'-8"	—
V710(E)	31	#4	12'-0"	—
** SP700	5	#4	52'-8"	
** SP701	4	#4	43'-6"	
** SP702	12	#4	45'-9"	
** SP703	6	#4	44'-9"	
V720	120	#11	52'-8"	—
V721	80	#10	43'-6"	—
V722	240	#10	45'-9"	—
V723	120	#10	44'-9"	—
Reinforcement Bars, Epoxy Coated		Pound	17,180	
Concrete Structures		CU YD	158	
Anti-Graffiti Coating		SQ FT	3,657	
Furnishing Soldier Piles (W Section)		FOOT	852	
Drilling and Setting Soldier Piles (in Soil)		CU FT	5,507	
Drilled Shaft in Soil		CU YD	592	
Reinforcement Bars		Pound	143,020	

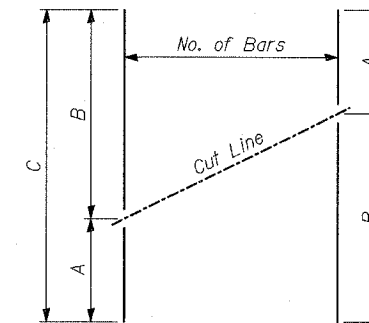
Minimum Lap for Spirals = 1 1/2 Turns
** Length is Height of Spiral.



DRILLED SHAFT ELEVATION

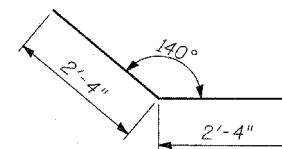


BAR d700(E)

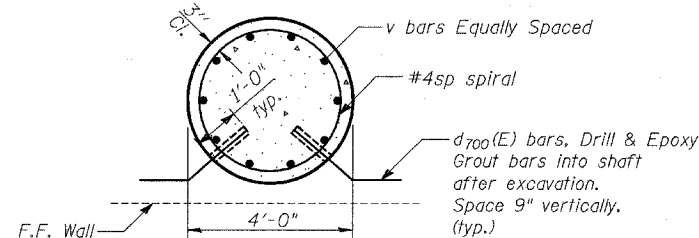


SERIES OF BAR CUTTING DIAGRAM

See table for dimensions.
Order Bars Full Length, Cut as Shown Normal to Bar Axis and Use Remainder of Bars in Opposite Face.



BAR h704(E)



SECTION D-D

Drill & Epoxy Grout d700(E) bars according to Article 584 of the Standard Specifications. The cost shall be included with "Reinforcement Bars, Epoxy Coated".

TYLIN INTERNATIONAL

DESIGNED	- MB
CHECKED	- AD
DRAWN	- CM
CHECKED	- AD

WALL Q
REINFORCEMENT DETAILS

FAP 346 (U.S. ROUTE 41 - SKOKIE HIGHWAY) OVER ILLINOIS ROUTE 132
SECTION 125X-HB-(1&2)R-1
LAKE COUNTY
S.N. 049-W038