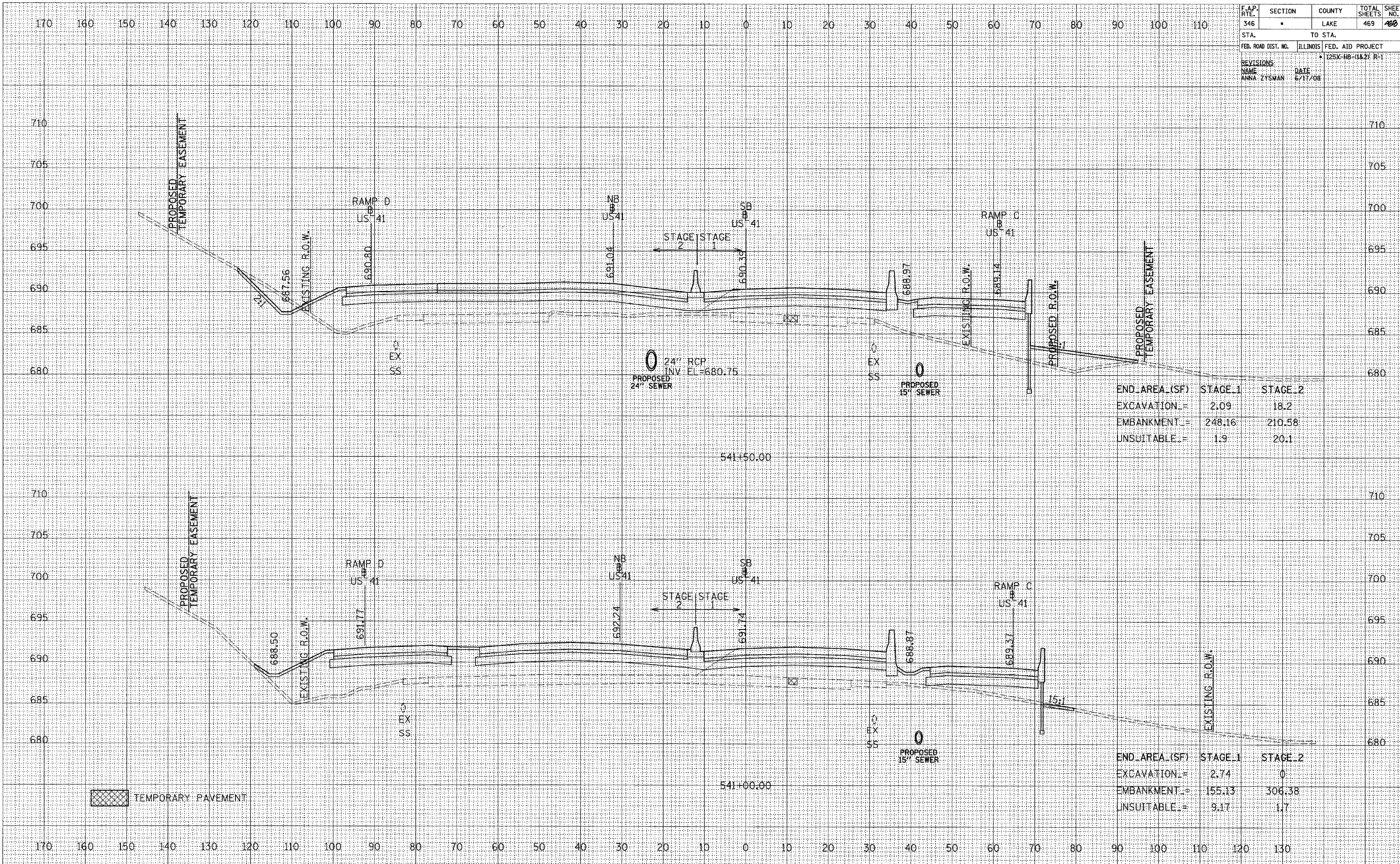


F.A.P. RTE.	SECTION	COUNTY	TOTAL SHEETS	SHEET NO.
346	*	LAKE	469	468
STA.		TO STA.		
FED. ROAD DIST. NO.		ILLINOIS	FED. AID PROJECT	
		* 125X-HB-(1&2) R-1		
REVISIONS:				
NAME	DATE			
ANNA ZYSMAN	6/17/08			

DATE	BY
FINAL SURVEY	SURVEYED
NOTE BOOK	PLOTTED
NO.	DATE
	AREAS CHECKED

DATE	BY
ORIGINAL SURVEY	SURVEYED
NOTE BOOK	PLOTTED
NO.	DATE
	AREAS CHECKED



END AREA (SF)	STAGE 1	STAGE 2
EXCAVATION	2.09	18.2
EMBANKMENT	248.16	210.58
UNSUITABLE	1.9	20.1

END AREA (SF)	STAGE 1	STAGE 2
EXCAVATION	2.74	0
EMBANKMENT	155.13	306.38
UNSUITABLE	9.17	1.7

TEMPORARY PAVEMENT