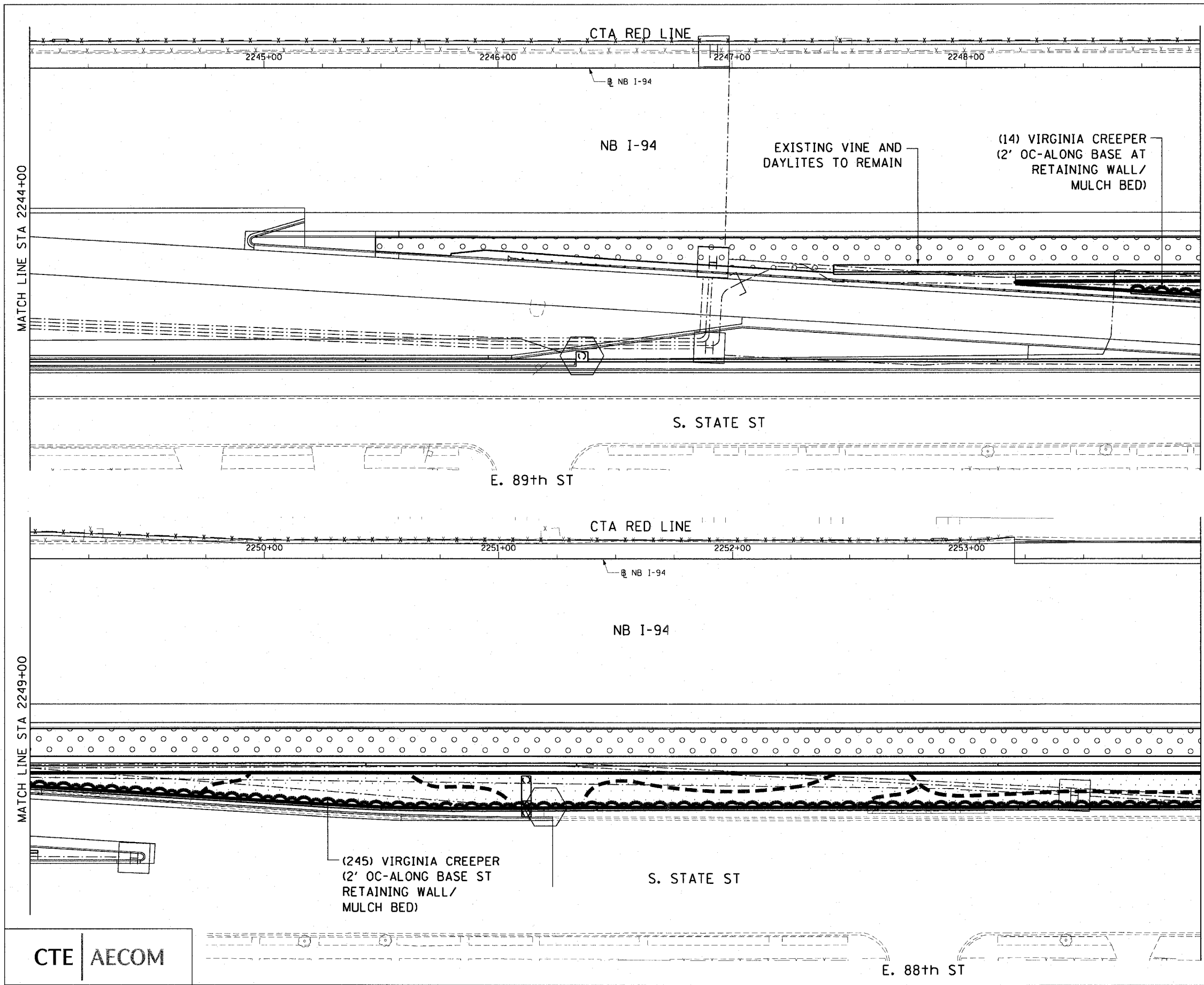


F.A.I. RTE.	SECTION	COUNTY	TOTAL SHEETS	SHEET NO.
90/94	2005-066 LS	COOK	77	36
STA. 2244+00		TO STA. 2254+00		
FED. ROAD DIST. NO. 1		ILLINOIS FED. AID PROJECT		
60A72				



MATCH LINE STA 2244+00

MATCH LINE STA 2249+00

MATCH LINE STA 2249+00

MATCH LINE STA 2254+00

CTE | AECOM

REVISIONS	
NAME	DATE

SHT-27 of 67

ILLINOIS DEPARTMENT OF TRANSPORTATION
F.A.I. 90/94 (DAN RYAN EXPRESSWAY)
NB ROADSIDE EMBANKMENT LANDSCAPE

**PROPOSED IMPROVEMENT
I-57 INTERCHANGE TO 31ST STREET**

SCALE: 1"=20'
DATE: JUNE 2008

DRAWN BY: LAM
CHECKED BY: JWM

p:\p40468\ch\1\30-rdside-embankment\sta220_nbv\22427_2.dwg

6/5/2008 5:19:27 PM