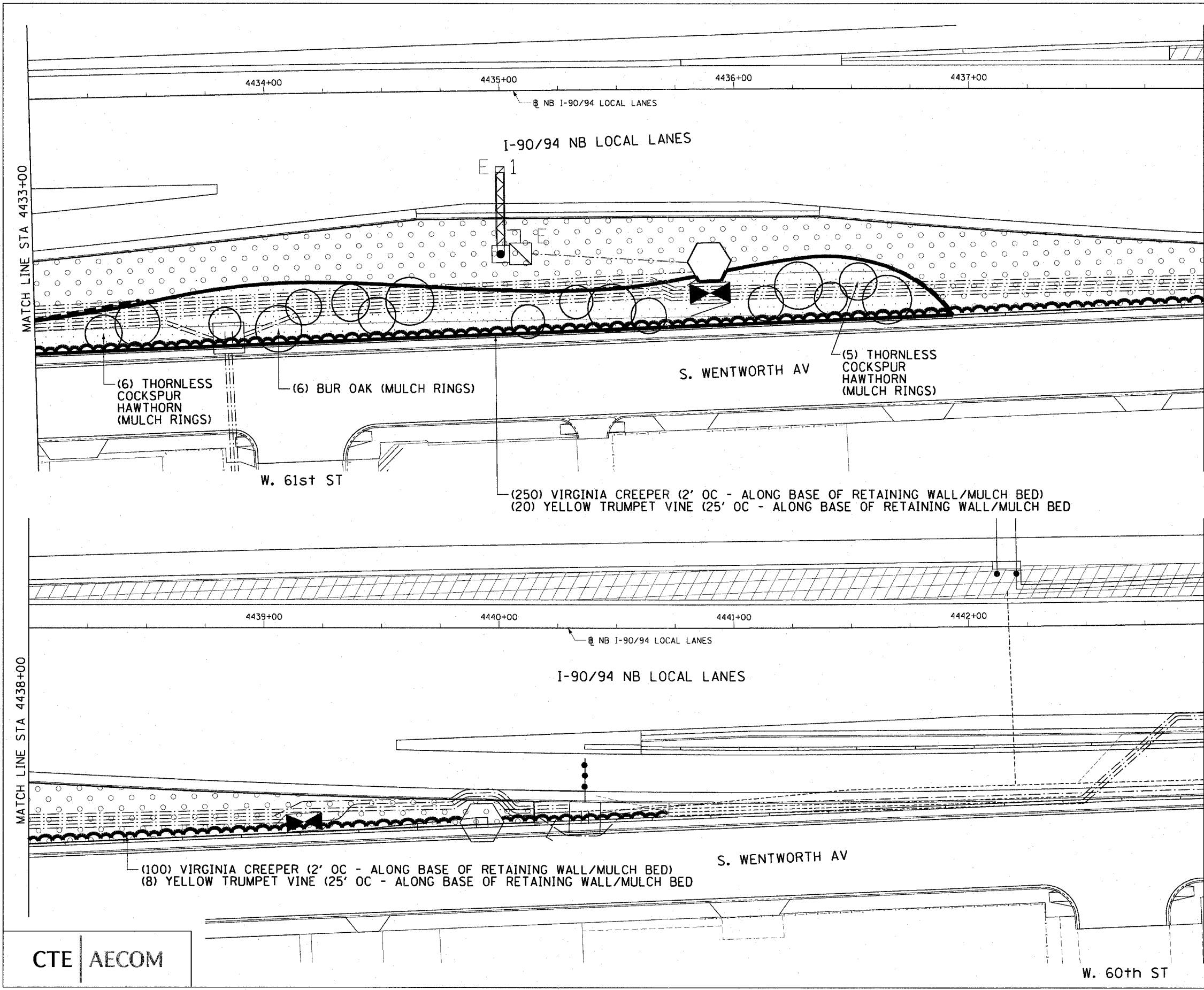


F.A.I. RT#	SECTION	COUNTY	TOTAL SHEETS	SHEET NO.
90/94	2005-066 LS	COOK	77	56
STA. 4433+00		TO STA. 4443+00		
FED. ROAD DIST. NO. 1 ILLINOIS FED. AID PROJECT				
60A72				



MATCH LINE STA 4433+00

MATCH LINE STA 4438+00

MATCH LINE STA 4438+00

MATCH LINE STA 4443+00

(6) THORNLESS
COCKSPUR
HAWTHORN
(MULCH RINGS)

(6) BUR OAK (MULCH RINGS)

S. WENTWORTH AV

(5) THORNLESS
COCKSPUR
HAWTHORN
(MULCH RINGS)

W. 61st ST

(250) VIRGINIA CREEPER (2' OC - ALONG BASE OF RETAINING WALL/MULCH BED)
(20) YELLOW TRUMPET VINE (25' OC - ALONG BASE OF RETAINING WALL/MULCH BED)

4439+00

4440+00

4441+00

4442+00

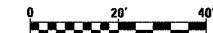
I-90/94 NB LOCAL LANES

S. WENTWORTH AV

(100) VIRGINIA CREEPER (2' OC - ALONG BASE OF RETAINING WALL/MULCH BED)
(8) YELLOW TRUMPET VINE (25' OC - ALONG BASE OF RETAINING WALL/MULCH BED)

W. 60th ST

CTE | AECOM



SHT-47 of 67

REVISIONS	
NAME	DATE

ILLINOIS DEPARTMENT OF TRANSPORTATION
F.A.I. 90/94 (DAN RYAN EXPRESSWAY)
NB ROADSIDE EMBANKMENT LANDSCAPE

PROPOSED IMPROVEMENT
I-57 INTERCHANGE TO 31ST STREET

SCALE: 1"=20'
DATE: JUNE 2008
DRAWN BY: LAM
CHECKED BY: RMG

P:\2004\65\65\65\30\roads\de_embankment\STA\220\65732.dwg