

**INDEX OF SHEETS**

FOR INDEX OF SHEETS, SEE SHEET NO. 2

PROJECT LOCATED IN THE CITY OF CHICAGO

DAN RYAN EXPRESSWAY:	ADT (2020)	DESIGN SPEED	POSTED SPEED
SB I-94 (DAN RYAN)	140,500	60 MPH	55 MPH
SB 79TH STREET C-D ENTRANCE RAMP	15,300	45 MPH	40 MPH
SB 79TH STREET C-D EXIT RAMP	7,300	45 MPH	40 MPH
NB I-94 (DAN RYAN)	151,800	60 MPH	55 MPH
NB 79TH STREET C-D EXIT RAMP	14,000	45 MPH	40 MPH
NB 79TH STREET C-D ENTRANCE RAMP	9,200	45 MPH	40 MPH

**DESCRIPTION OF PROJECT**

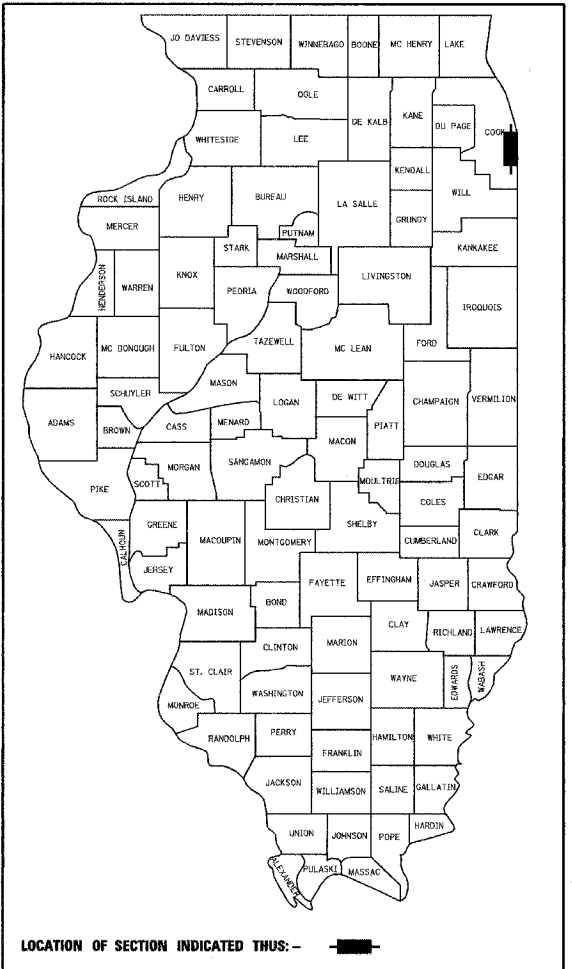
LANDSCAPING AND IRRIGATION OF GATEWAYS AND CORNER GARDENS LOCATED WITHIN THE PROJECT LIMITS, AND FLUTED KNEE WALL CONSTRUCTION IN THE SOUTHWEST QUADRANT.

STATE OF ILLINOIS  
DEPARTMENT OF TRANSPORTATION  
DIVISION OF HIGHWAYS

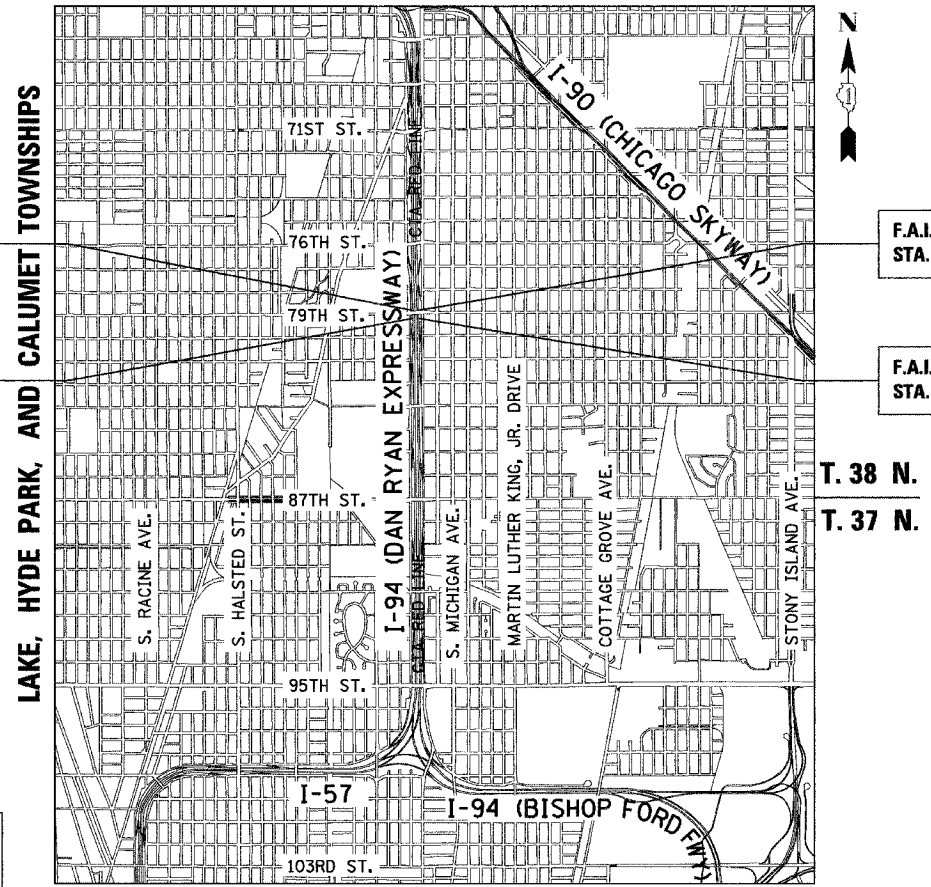
**PROPOSED HIGHWAY PLANS**

F.A.I. ROUTE 94 (DAN RYAN EXPRESSWAY)  
SECTION 2005-070 LS  
GATEWAYS AND CORNER GARDENS  
NE, SE, NW & SW QUADRANTS AT 79TH STREET

F.A.I. RTE.	SECTION	COUNTY	TOTAL SHEETS	SHEET NO.
94	2005-070 LS	COOK	65	1
FED. ROAD DIST. NO.	ILLINOIS FED. AID PROJECT			
D-91-106-06			60A76	



COOK COUNTY  
C-91-106-06  
R. 14 E.

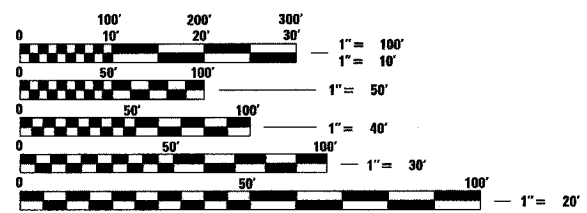


F.A.I. 94 (RYAN) PROJECT LIMIT  
STA. 1318+60.52 (SB I-94)

F.A.I. 94 (RYAN) PROJECT LIMIT  
STA. 1308+45.74 (SB I-94)

F.A.I. 94 (RYAN) PROJECT LIMIT  
STA. 2316+89.45 (NB I-94)

F.A.I. 94 (RYAN) PROJECT LIMIT  
STA. 2308+17.02 (NB I-94)



FULL SIZE PLANS HAVE BEEN PREPARED USING STANDARD ENGINEERING SCALES; REDUCED SIZED PLANS WILL NOT CONFORM TO STANDARD SCALES. IN MAKING MEASUREMENTS ON REDUCED PLANS, THE ABOVE SCALES MAY BE USED

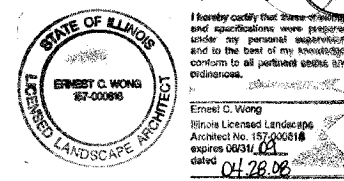
DIGGER:  
CHICAGO UTILITY ALERT NETWORK  
(312) 744-7000

CTA CONTACT:  
DAVID HEARD  
MANAGER, CONSTRUCTION MANAGEMENT OVERSIGHT  
(312) 681-3862

CONTRACT NO. 60A76

LOCATION MAP  
GROSS LENGTH OF PROJECT = 1,887.21 FT. = 0.36 MI.  
NET LENGTH OF PROJECT = 1,887.21 FT. = 0.36 MI.

Signed *Ernest C. Wong, RL* 11. Lic. No. 157-000818 Expires 08-31-2009.  
Date 04-28-2008  
For Landscape Drawings 22-27, 37-39, 41e



Signed *Dean A. Kiesel*  
Date 04-28-08  
32957 REGISTERED PROFESSIONAL ENGINEER OF ILLINOIS

STATE OF ILLINOIS  
DEPARTMENT OF TRANSPORTATION  
DIVISION OF HIGHWAYS

SUBMITTED APRIL 29, 2008

*Dean M. O'Keefe*  
DEPUTY DIRECTOR OF HIGHWAYS, REGION ENGINEER

June 27, 2008  
*Eric E. Ham*  
INTERIM ENGINEER OF DESIGN AND ENVIRONMENT

June 27, 2008  
*Christine M. Reed*  
DIRECTOR OF HIGHWAYS, CHIEF ENGINEER

CONTRACT 22E

TYLIN INTERNATIONAL  
PRINTED BY THE AUTHORITY OF THE STATE OF ILLINOIS

DISTRICT ONE DESIGN / PROJECT MANAGER:  
BRIAN KUTTAB (847) 705 - 4431