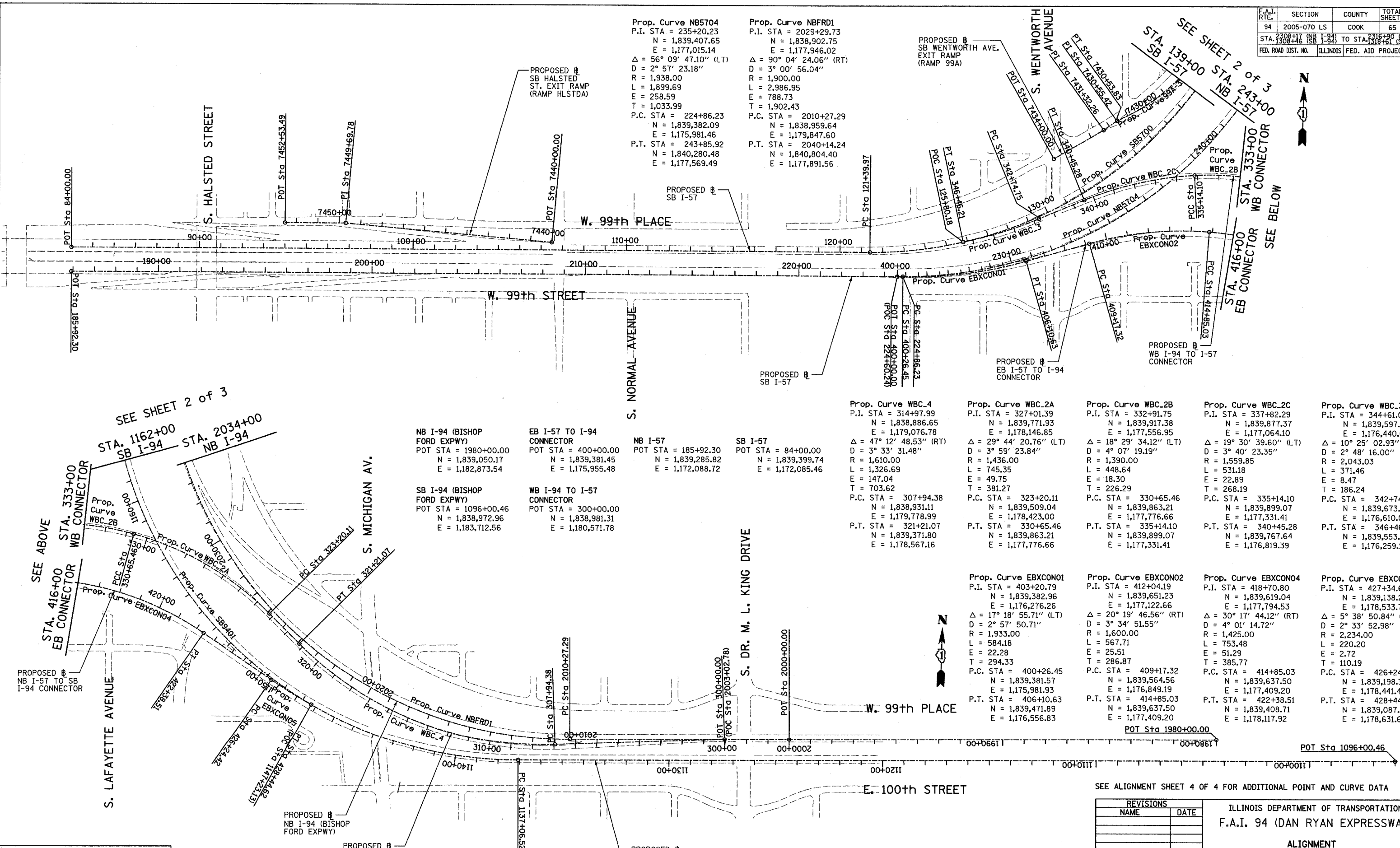


F.A.I. RTE.	SECTION	COUNTY	TOTAL SHEETS	SHEET NO.
94	2005-070 LS	COOK	65	8
STA. 1308+46 (SB I-94) TO STA. 1318+50 (NB I-94) FED. ROAD DIST. NO. ILLINOIS FED. AID PROJECT				

60A



**Prop. Curve NB5704**  
 P.I. STA = 235+20.23  
 N = 1,839,407.65  
 E = 1,177,015.14  
 Δ = 56° 09' 47.10" (LT)  
 D = 2° 57' 23.18"  
 R = 1,938.00  
 L = 1,899.69  
 E = 258.59  
 T = 1,033.99  
 P.C. STA = 224+86.23  
 N = 1,839,382.09  
 E = 1,175,981.46  
 P.T. STA = 243+85.92  
 N = 1,840,280.48  
 E = 1,177,569.49

**Prop. Curve NBFRD1**  
 P.I. STA = 2029+29.73  
 N = 1,838,902.75  
 E = 1,177,946.02  
 Δ = 90° 04' 24.06" (RT)  
 D = 3° 00' 56.04"  
 R = 1,900.00  
 L = 2,986.95  
 E = 788.73  
 T = 1,902.43  
 P.C. STA = 2010+27.29  
 N = 1,838,959.64  
 E = 1,179,847.60  
 P.T. STA = 2040+14.24  
 N = 1,840,804.40  
 E = 1,177,891.56

**NB I-94 (BISHOP FORD EXPWY)**  
 POT STA = 1980+00.00  
 N = 1,839,050.17  
 E = 1,182,873.54

**SB I-94 (BISHOP FORD EXPWY)**  
 POT STA = 1096+00.46  
 N = 1,838,972.96  
 E = 1,183,712.56

**EB I-57 TO I-94 CONNECTOR**  
 POT STA = 400+00.00  
 N = 1,839,381.45  
 E = 1,175,955.48

**WB I-94 TO I-57 CONNECTOR**  
 POT STA = 300+00.00  
 N = 1,838,981.31  
 E = 1,180,571.78

**NB I-57**  
 POT STA = 185+92.30  
 N = 1,839,285.82  
 E = 1,172,088.72

**SB I-57**  
 POT STA = 84+00.00  
 N = 1,839,399.74  
 E = 1,172,085.46

**Prop. Curve WBC.4**  
 P.I. STA = 314+97.99  
 N = 1,838,886.65  
 E = 1,179,076.78  
 Δ = 47° 12' 48.53" (RT)  
 D = 3° 33' 31.48"  
 R = 1,610.00  
 L = 1,326.69  
 E = 147.04  
 T = 703.62  
 P.C. STA = 307+94.38  
 N = 1,838,931.11  
 E = 1,179,778.99  
 P.T. STA = 321+21.07  
 N = 1,839,371.80  
 E = 1,178,567.16

**Prop. Curve WBC.2A**  
 P.I. STA = 327+01.39  
 N = 1,839,771.93  
 E = 1,178,146.85  
 Δ = 29° 44' 20.76" (LT)  
 D = 3° 59' 23.84"  
 R = 1,436.00  
 L = 745.35  
 E = 49.75  
 T = 381.27  
 P.C. STA = 323+20.11  
 N = 1,839,509.04  
 E = 1,178,423.00  
 P.T. STA = 330+65.46  
 N = 1,839,863.21  
 E = 1,177,776.66

**Prop. Curve WBC.2B**  
 P.I. STA = 332+91.75  
 N = 1,839,917.38  
 E = 1,177,556.95  
 Δ = 18° 29' 34.12" (LT)  
 D = 4° 07' 19.19"  
 R = 1,539.00  
 L = 448.64  
 E = 18.30  
 T = 226.29  
 P.C. STA = 330+65.46  
 N = 1,839,863.21  
 E = 1,177,776.66  
 P.T. STA = 335+14.10  
 N = 1,839,899.07  
 E = 1,177,331.41

**Prop. Curve WBC.2C**  
 P.I. STA = 337+82.29  
 N = 1,839,877.37  
 E = 1,177,064.10  
 Δ = 19° 30' 39.60" (LT)  
 D = 3° 40' 23.35"  
 R = 1,559.85  
 L = 531.18  
 E = 22.89  
 T = 268.19  
 P.C. STA = 335+14.10  
 N = 1,839,899.07  
 E = 1,177,331.41  
 P.T. STA = 340+45.28  
 N = 1,839,767.64  
 E = 1,176,819.39

**Prop. Curve WBC.3**  
 P.I. STA = 344+61.00  
 N = 1,839,597.54  
 E = 1,176,440.07  
 Δ = 10° 25' 02.93" (RT)  
 D = 2° 48' 16.00"  
 R = 2,043.03  
 L = 371.46  
 E = 8.47  
 T = 186.24  
 P.C. STA = 342+74.75  
 N = 1,839,673.75  
 E = 1,176,610.01  
 P.T. STA = 346+46.21  
 N = 1,839,553.32  
 E = 1,176,259.15

**Prop. Curve EBXCNO1**  
 P.I. STA = 403+20.79  
 N = 1,839,382.96  
 E = 1,176,276.26  
 Δ = 17° 18' 55.71" (LT)  
 D = 2° 57' 50.71"  
 R = 1,933.00  
 L = 584.18  
 E = 22.28  
 T = 294.33  
 P.C. STA = 400+26.45  
 N = 1,839,381.57  
 E = 1,175,981.93  
 P.T. STA = 406+10.63  
 N = 1,839,471.89  
 E = 1,176,556.83

**Prop. Curve EBXCNO2**  
 P.I. STA = 412+04.19  
 N = 1,839,651.23  
 E = 1,177,122.66  
 Δ = 20° 19' 46.56" (RT)  
 D = 3° 34' 51.55"  
 R = 1,600.00  
 L = 567.71  
 E = 25.51  
 T = 286.87  
 P.C. STA = 409+17.32  
 N = 1,839,564.56  
 E = 1,177,409.19  
 P.T. STA = 414+85.03  
 N = 1,839,637.50  
 E = 1,177,409.20

**Prop. Curve EBXCNO4**  
 P.I. STA = 418+70.80  
 N = 1,839,619.04  
 E = 1,177,794.53  
 Δ = 30° 17' 44.12" (RT)  
 D = 4° 01' 14.72"  
 R = 1,425.00  
 L = 753.48  
 E = 51.29  
 T = 385.77  
 P.C. STA = 414+85.03  
 N = 1,839,637.50  
 E = 1,177,409.20  
 P.T. STA = 422+38.51  
 N = 1,839,408.71  
 E = 1,178,117.92

**Prop. Curve EBXCNO5**  
 P.I. STA = 427+34.61  
 N = 1,839,138.24  
 E = 1,178,533.79  
 Δ = 5° 38' 50.84" (LT)  
 D = 2° 33' 52.98"  
 R = 2,234.00  
 L = 220.20  
 E = 2.72  
 T = 110.19  
 P.C. STA = 426+24.42  
 N = 1,839,198.31  
 E = 1,178,441.42  
 P.T. STA = 428+44.62  
 N = 1,839,087.55  
 E = 1,178,631.63

SEE ALIGNMENT SHEET 4 OF 4 FOR ADDITIONAL POINT AND CURVE DATA

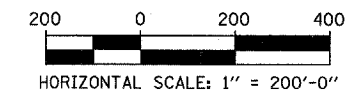
REVISIONS	
NAME	DATE

ILLINOIS DEPARTMENT OF TRANSPORTATION  
 F.A.I. 94 (DAN RYAN EXPRESSWAY)

ALIGNMENT  
 SHEET 1 OF 4

SCALE: 1"=200'-0"  
 DATE: MAY 1, 2008

DRAWN BY: JPM  
 CHECKED BY: DAK



TYLIN INTERNATIONAL