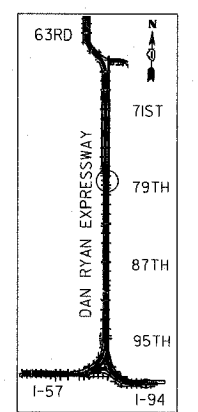
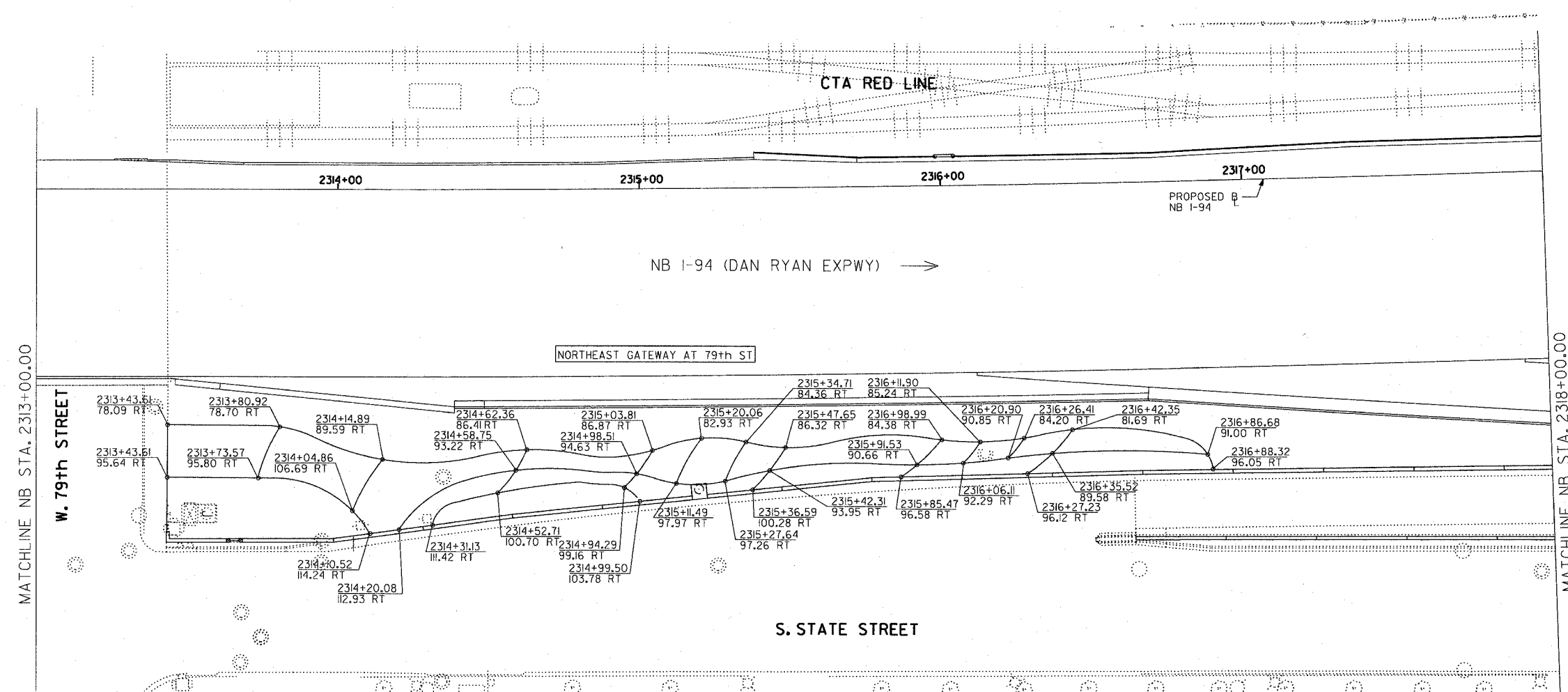
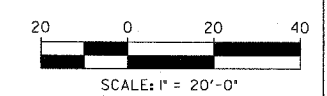


F.A.I. RTE.	SECTION	COUNTY	TOTAL SHEETS	SHEET NO.
94	2005-070 LS	COOK	65	23
STA. 2313+00		TO STA. 2318+00		
FED. ROAD DIST. NO.	ILLINOIS	FED. AID PROJECT		

60A76



LOCATION MAP



SITE DESIGN GROUP

TYLIN INTERNATIONAL

NOTE: THE LOCATION OF ALL PLANT MATERIAL SHALL BE STAKED BY THE CONTRACTOR FOR APPROVAL BY THE ENGINEER IN FIELD, PRIOR TO INSTALLATION. INDIVIDUAL TREES SHALL BE STAKED WITH IDENTITIES WRITTEN ON STAKES. SHRUB AND PERENNIAL BEDS SHALL BE OUTLINED WITH STAKES AND PAINTED LINES.

REVISIONS	
NAME	DATE

ILLINOIS DEPARTMENT OF TRANSPORTATION
 F.A.I. 94 (DAN RYAN EXPRESSWAY)
 79TH STREET GATEWAY LANDSCAPING AND IRRIGATION
 PLANTING BED LAYOUT PLAN
 NE QUADRANT AT 79TH ST. - NB I-94

SCALE: 1"=20'
 DATE: **May 1, 2008**

DRAWN BY: EM
 CHECKED BY: JO

SCALE: \$/TIME\$