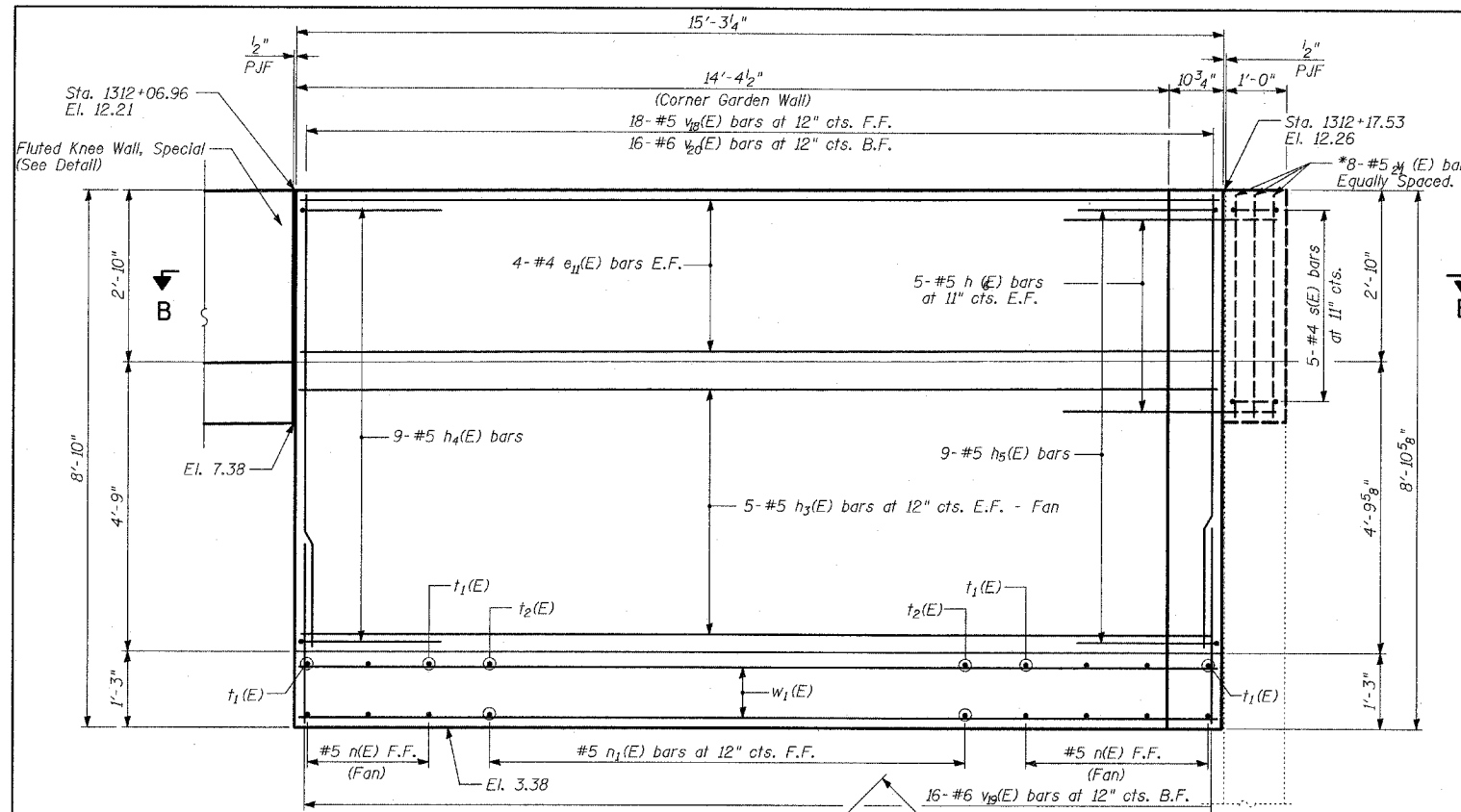


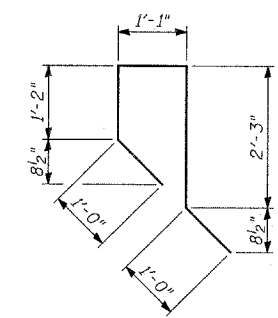
BILL OF MATERIAL

Bar	No.	Size	Length	Shape
e ₁₁ (E)	8	#4	14'-0"	—
h ₃ (E)	10	#5	14'-0"	—
h ₄ (E)	9	#5	6'-6"	—
h ₅ (E)	9	#5	5'-2"	—
h ₆ (E)	10	#5	3'-11"	—
n(E)	9	#5	8'-2"	—
n ₁ (E)	9	#5	7'-4"	—
s(E)	5	#4	5'-7"	—
t ₁ (E)	7	#6	5'-6"	—
t ₂ (E)	9	#6	4'-8"	—
v ₁₉ (E)	18	#5	7'-5"	—
v ₁₉ (E)	16	#6	5'-3"	—
v ₂₀ (E)	16	#6	7'-5"	—
v ₂₁ (E)	8	#5	3'-6"	—
w ₁ (E)	10	#5	14'-0"	—
Reinforcement Bars, Epoxy Coated		POUND	2,600	
Structure Excavation		CU YD	26	
Concrete Structures		CU YD	9	
Protective Coat		SQ YD	14	
Rustication Finish		SQ FT	28	

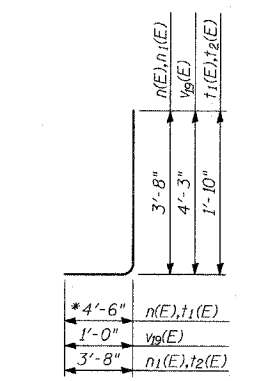
Reinforcement bars designated (E) shall be epoxy coated.



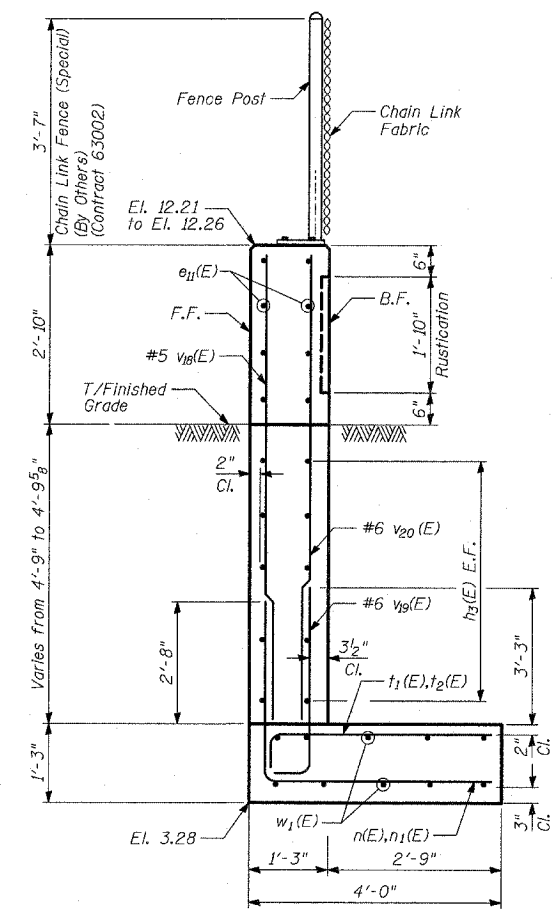
ELEVATION AT FRONT FACE
(Chain Link Fence not shown for clarity)



BAR h₄(E)

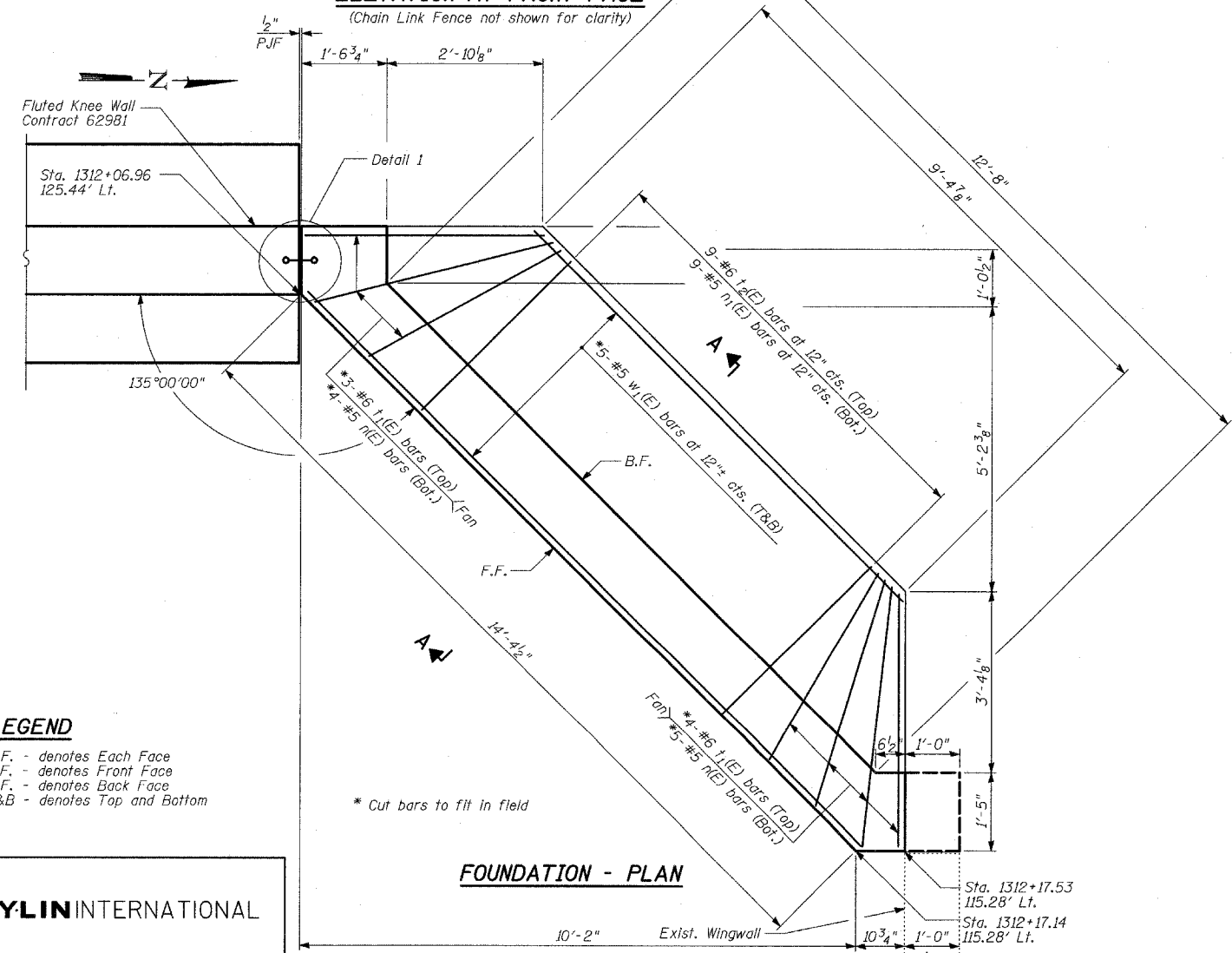


BARS n(E), n₁(E), t₁(E), t₂(E) and v₁₉(E)



SECTION A-A

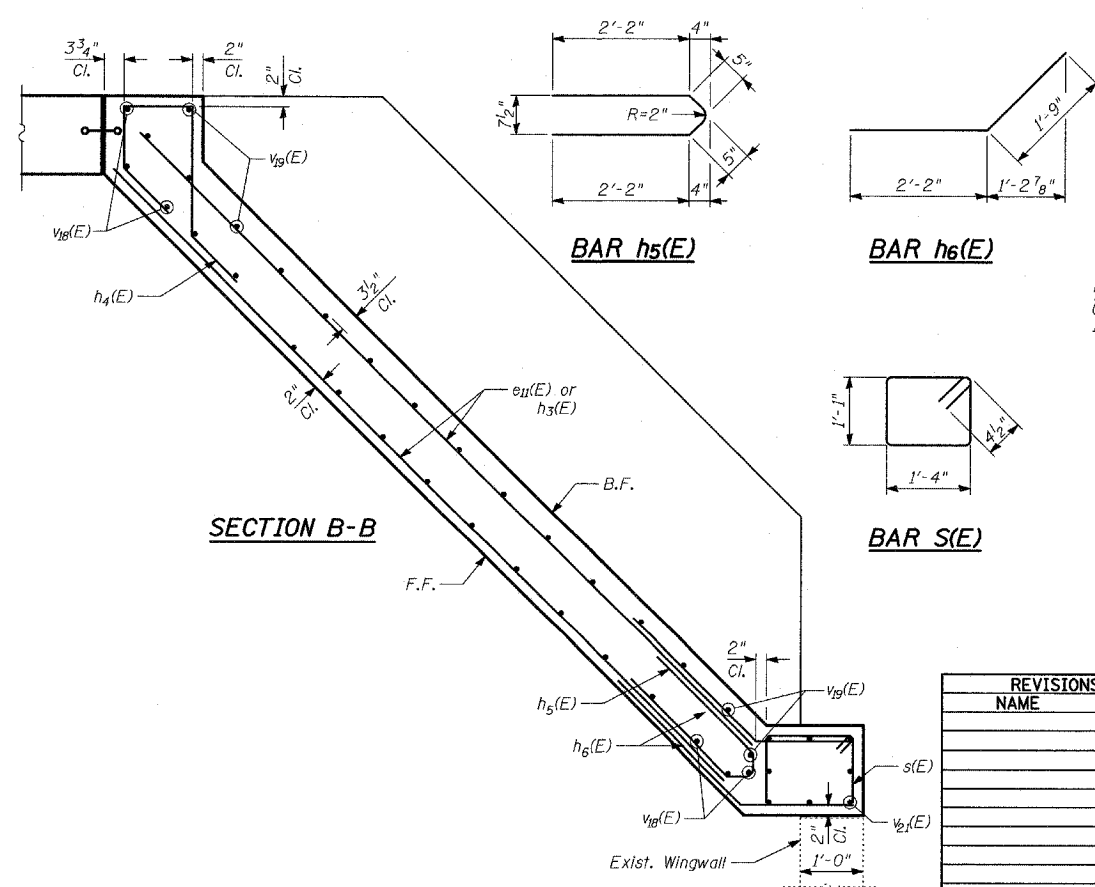
Sta. 1312+06.96 to Sta. 1312+17.53



FOUNDATION - PLAN

LEGEND
E.F. - denotes Each Face
F.F. - denotes Front Face
B.F. - denotes Back Face
T&B - denotes Top and Bottom

TYLIN INTERNATIONAL



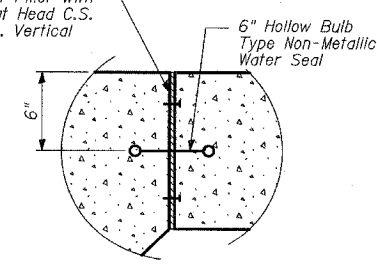
SECTION B-B

BAR h₅(E)

BAR h₆(E)

BAR s(E)

1/2" Preformed Joint Filler with Concrete Nails, Flat Head C.S. 1" Long @ 12" Cts. Vertical



DETAIL 1

REVISIONS	
NAME	DATE

ILLINOIS DEPARTMENT OF TRANSPORTATION
F.A.I. 94 (DAN RYAN EXPRESSWAY)

TYPICAL SECTIONS, ELEVATIONS AND DETAILS
- CORNER GARDEN

SCALE: N.T.S. DRAWN BY: MAF
DATE: MAY 1, 2008 CHECKED BY: MI