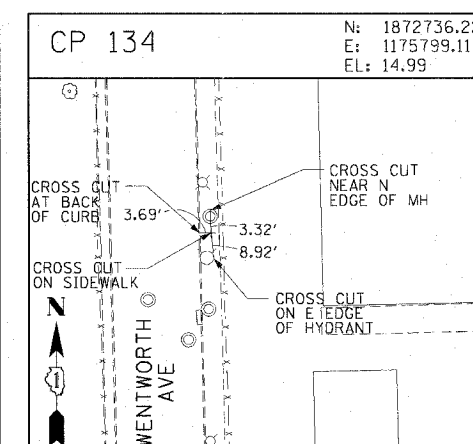
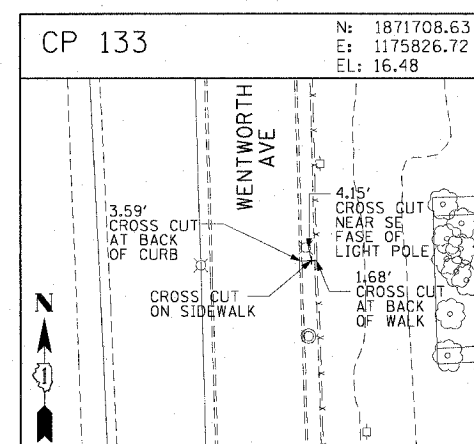
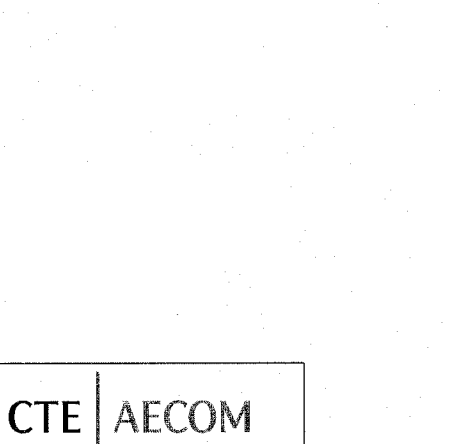
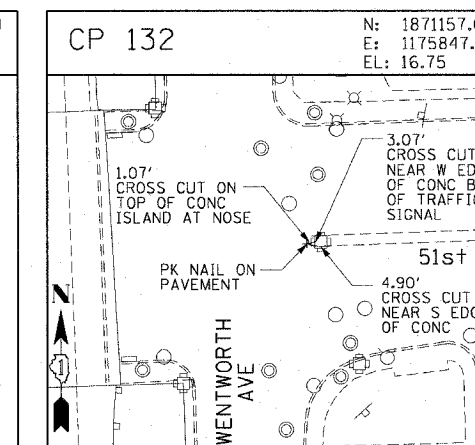
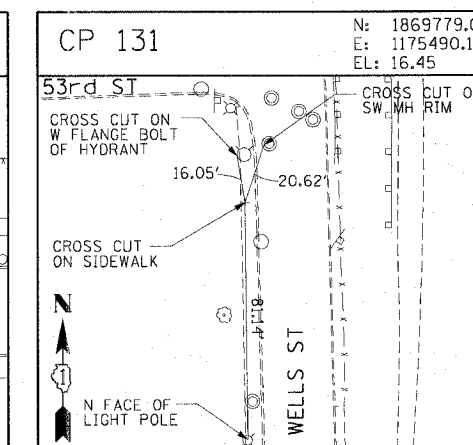
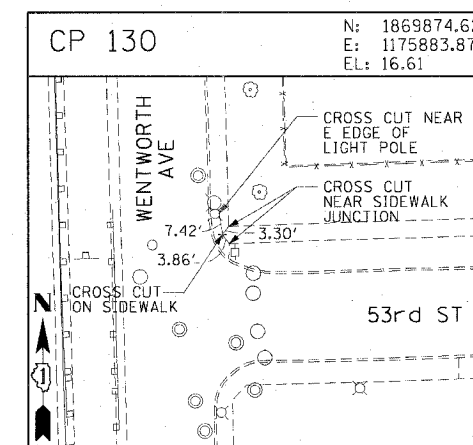
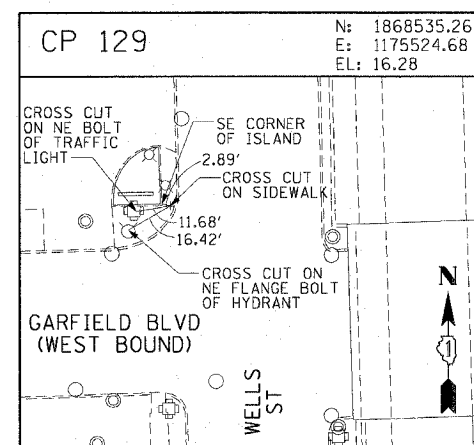
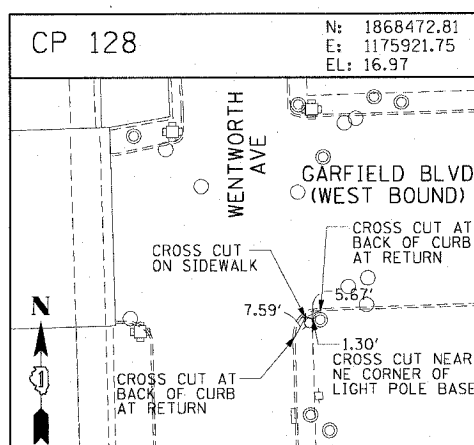
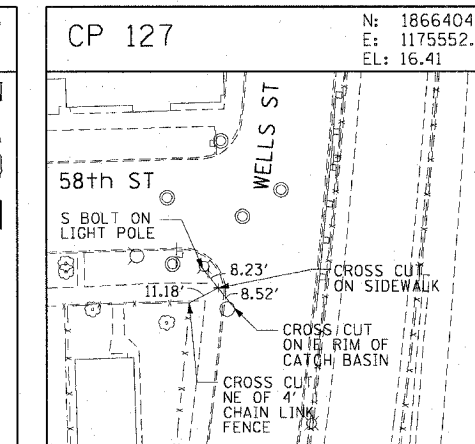
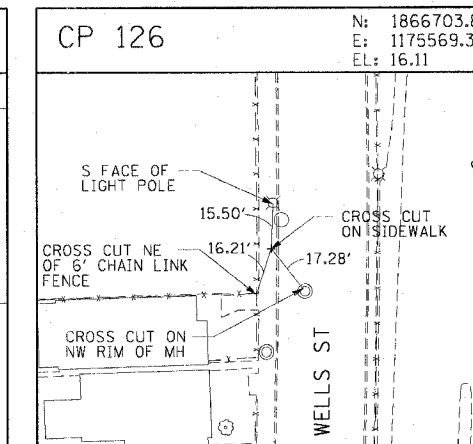
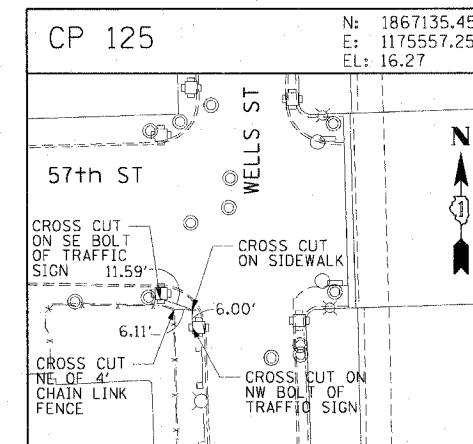
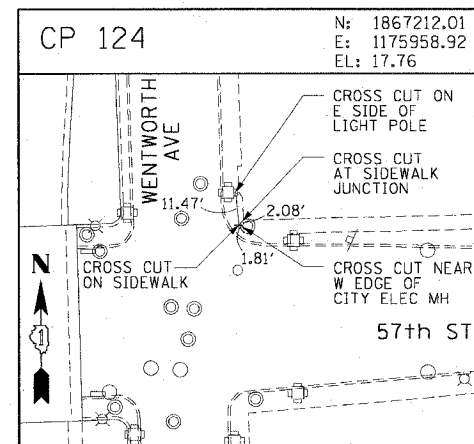
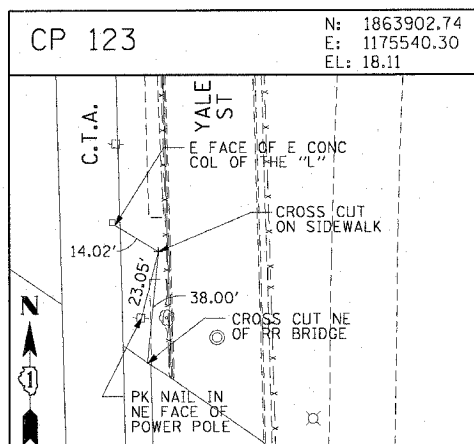
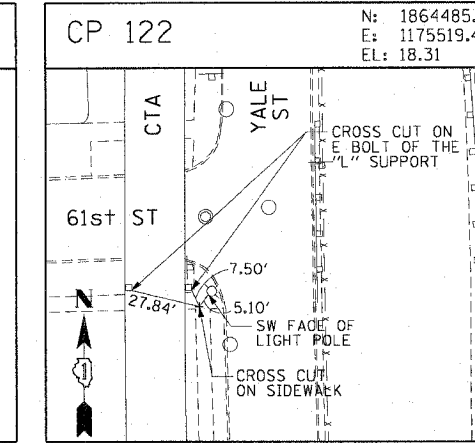
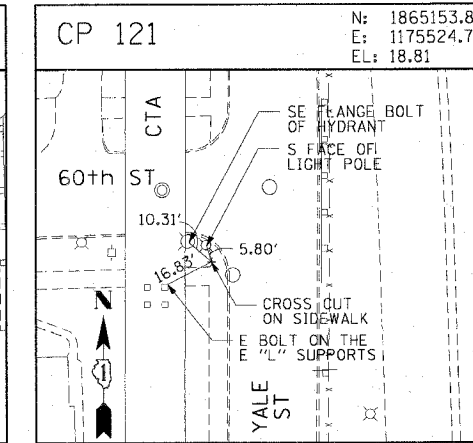
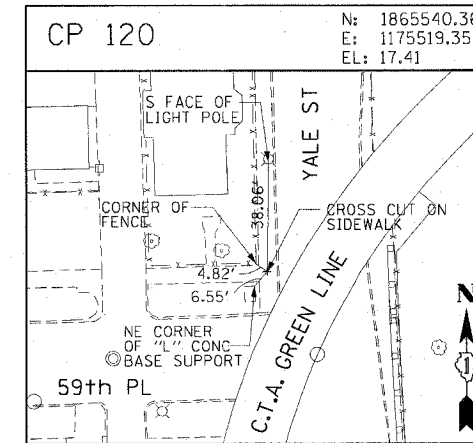
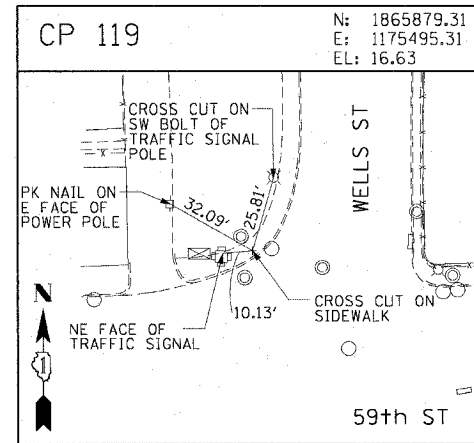
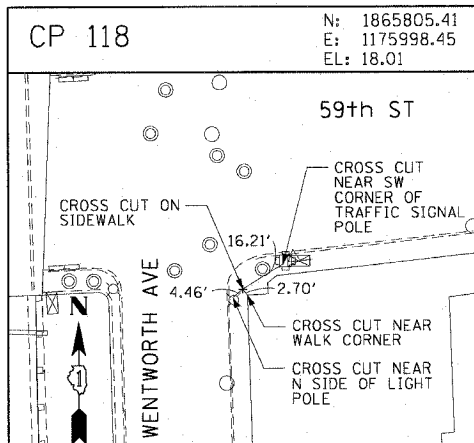


F.A.I. RTE.	SECTION	COUNTY	TOTAL SHEETS	SHEET NO.
90/94	2005-072 LS	COOK	38	12
STA.		TO STA.		
FED. ROAD DIST. NO. 1 ILLINOIS FED. AID PROJECT				
60A78				



CTE | AECOM

REVISIONS	
NAME	DATE

ILLINOIS DEPARTMENT OF TRANSPORTATION
 F.A.I. 90/94 (DAN RYAN EXPRESSWAY)
 47TH STREET GATEWAY LANDSCAPING AND IRRIGATION
 SURVEY TIES AND CONTROL POINTS

SCALE: 1"=30'
 DATE: MAY 02, 2008

DRAWN BY: MRK
 CHECKED BY: JAL

P:\040466\c\1\29_gateway_irrigations\129_141\11\02\250222.sst 05/01/2008 04:03:35 PM