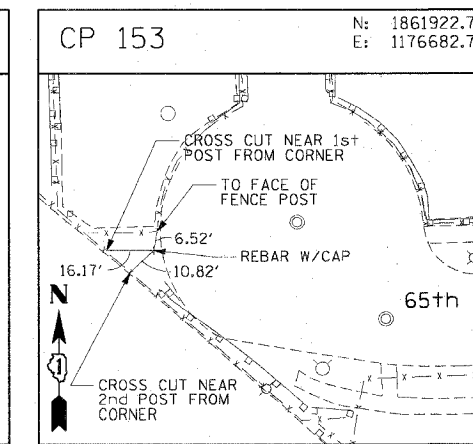
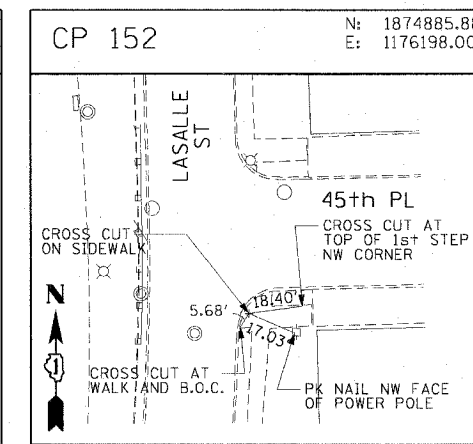
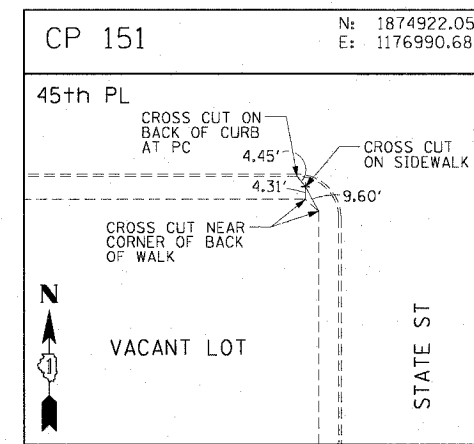
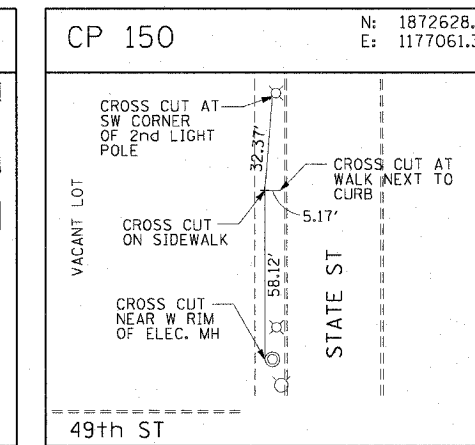
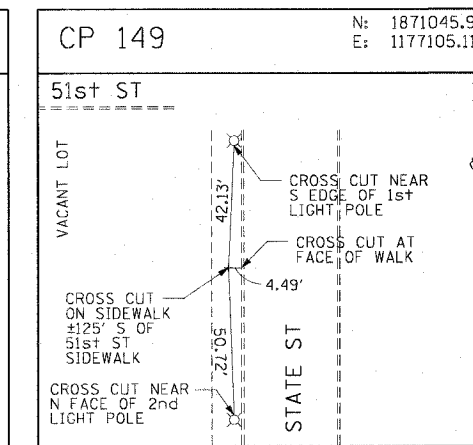
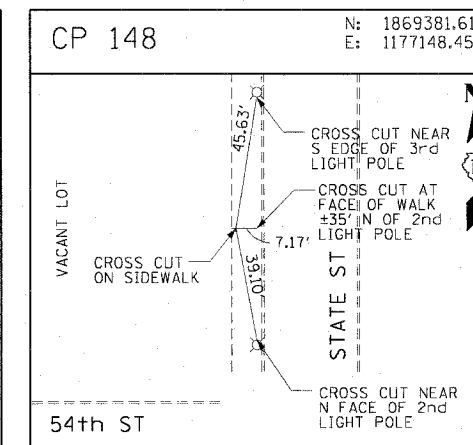
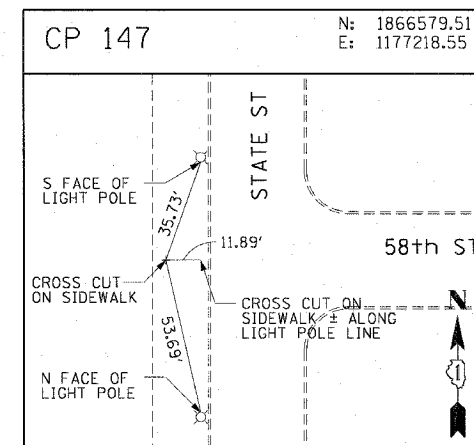
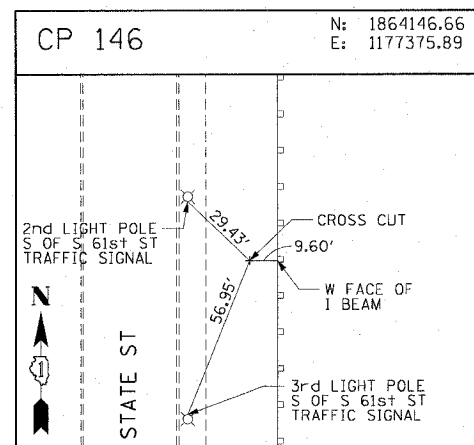
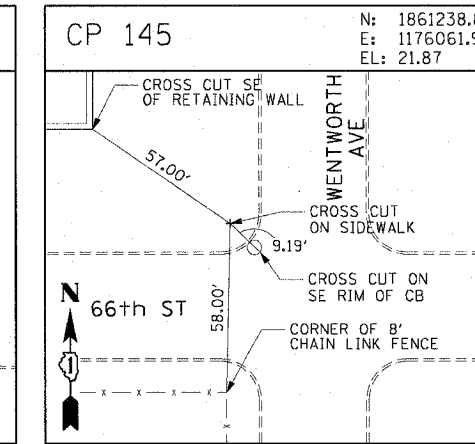
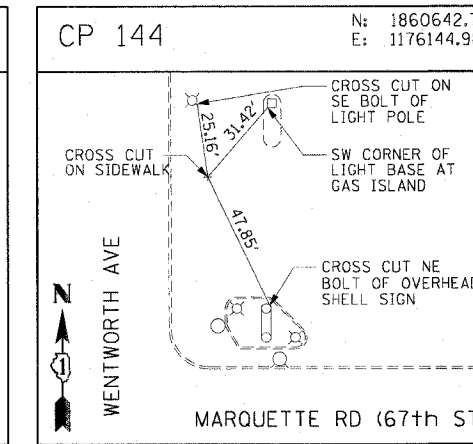
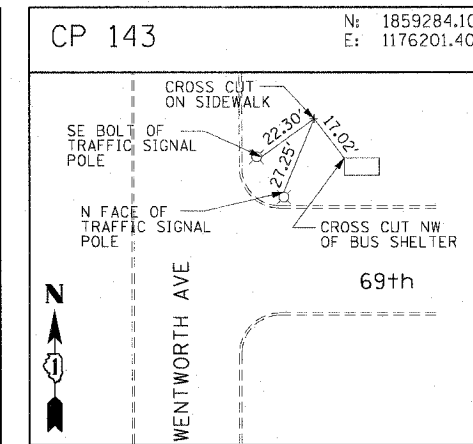
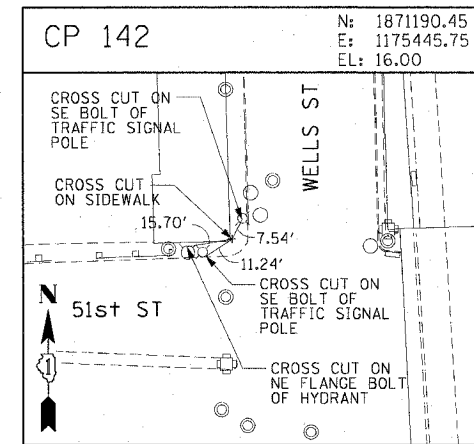
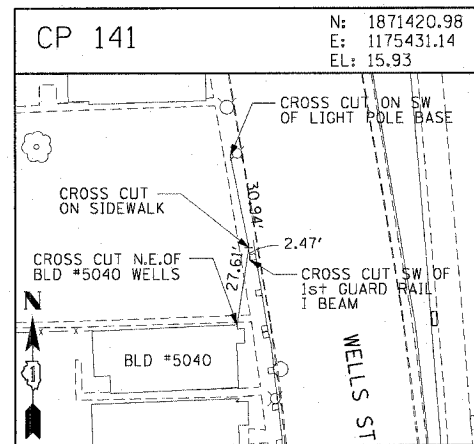
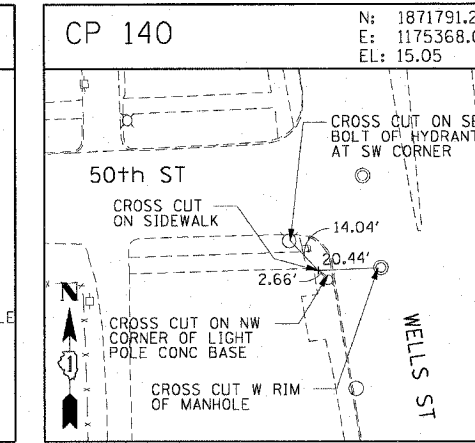
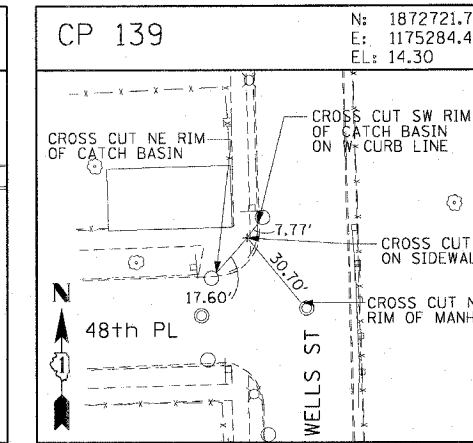
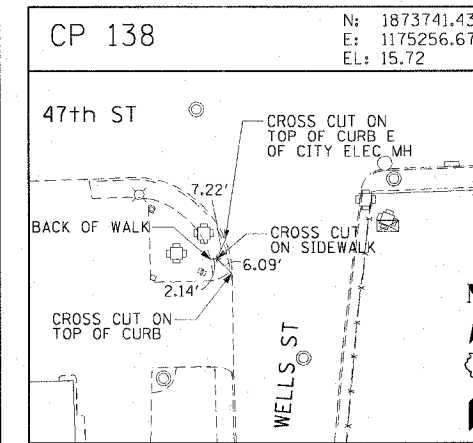
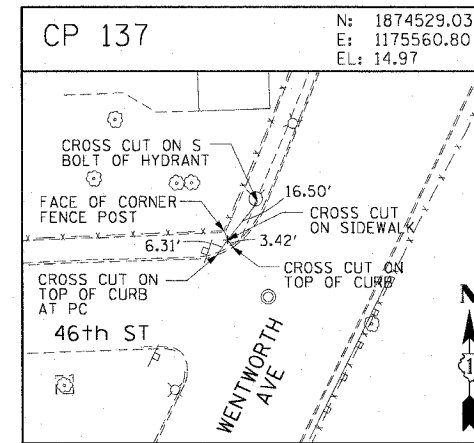
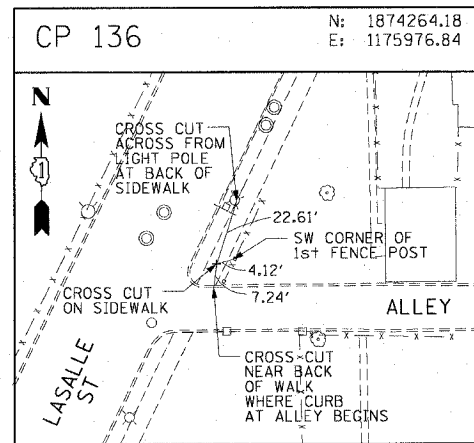


F.A.I. RTE.	SECTION	COUNTY	TOTAL SHEETS	SHEET NO.
90/94	2005-072 LS	COOK	38	13
STA.		TO STA.		
FED. ROAD DIST. NO. 1		ILLINOIS FED. AID PROJECT		
60A78				



REVISIONS	
NAME	DATE

ILLINOIS DEPARTMENT OF TRANSPORTATION
F.A.I. 90/94 (DAN RYAN EXPRESSWAY)
47TH STREET GATEWAY LANDSCAPING AND IRRIGATION
SURVEY TIES AND CONTROL POINTS

SCALE: 1"=30'
DATE: MAY 02, 2008

DRAWN BY: MRK
CHECKED BY: JAL

D:\40468\c\1429-gateway-irrigation\1429-147th\1429\0320.dwg 05/07/2008 04:09:56 PM