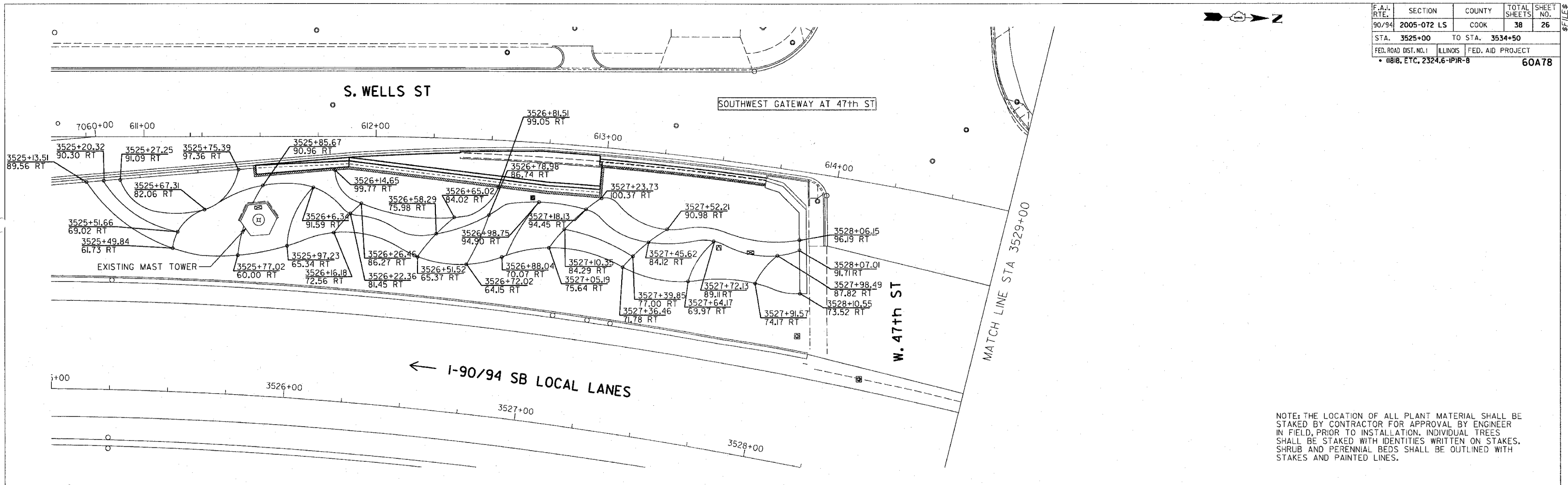
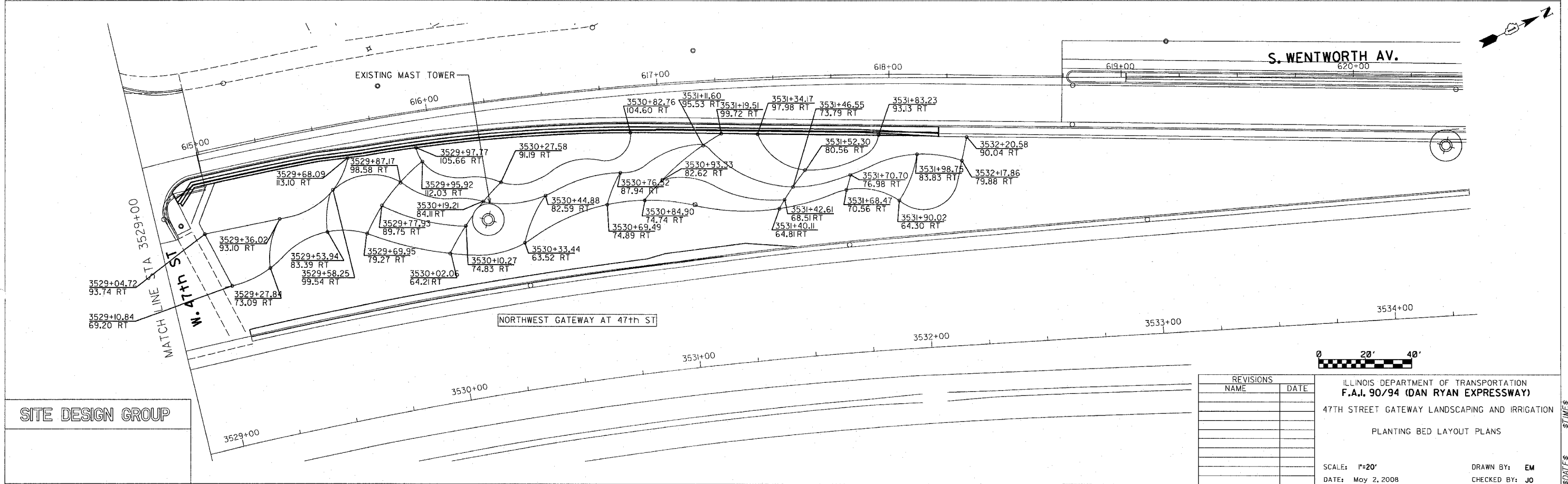


F.A.I. RTE.	SECTION	COUNTY	TOTAL SHEETS	SHEET NO.
90/94	2005-072 LS	COOK	38	26
STA. 3525+00	TO STA. 3534+50			
FED. ROAD DIST. NO. 1	ILLINOIS	FED. AID PROJECT		
• 008B, ETC., 2324.6-IPR-8			60A78	

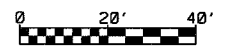


NOTE: THE LOCATION OF ALL PLANT MATERIAL SHALL BE STAKED BY CONTRACTOR FOR APPROVAL BY ENGINEER IN FIELD, PRIOR TO INSTALLATION. INDIVIDUAL TREES SHALL BE STAKED WITH IDENTITIES WRITTEN ON STAKES. SHRUB AND PERENNIAL BEDS SHALL BE OUTLINED WITH STAKES AND PAINTED LINES.



SITE DESIGN GROUP

REVISIONS	
NAME	DATE



ILLINOIS DEPARTMENT OF TRANSPORTATION
F.A.I. 90/94 (DAN RYAN EXPRESSWAY)
 47TH STREET GATEWAY LANDSCAPING AND IRRIGATION
 PLANTING BED LAYOUT PLANS

SCALE: 1"=20'
 DATE: May 2, 2008

DRAWN BY: EM
 CHECKED BY: JO

DATE\$