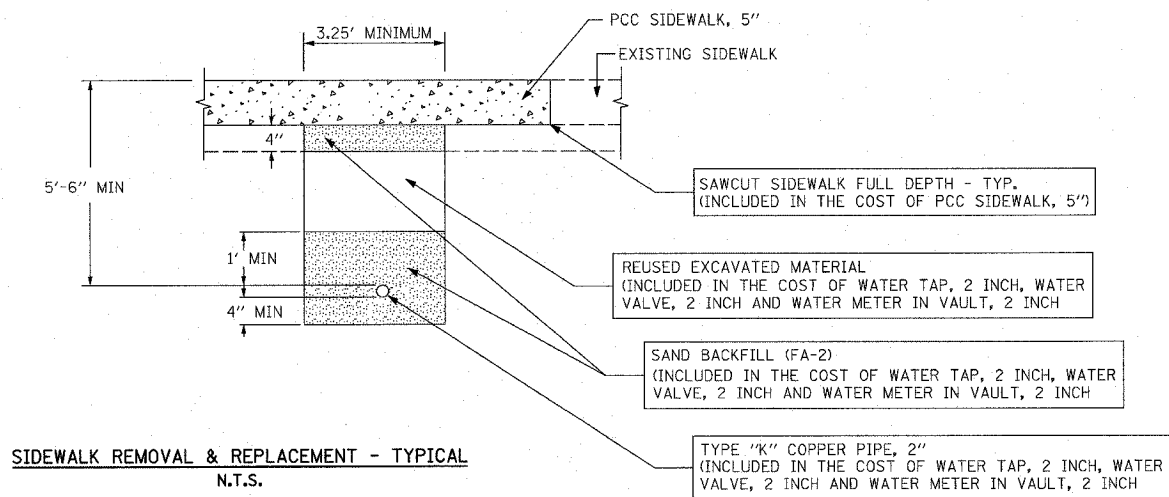
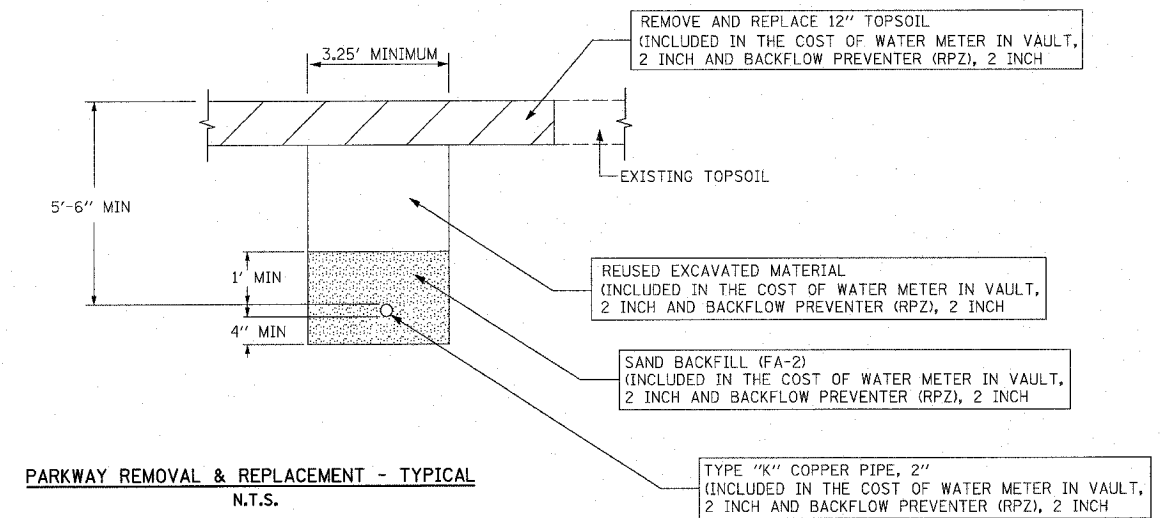


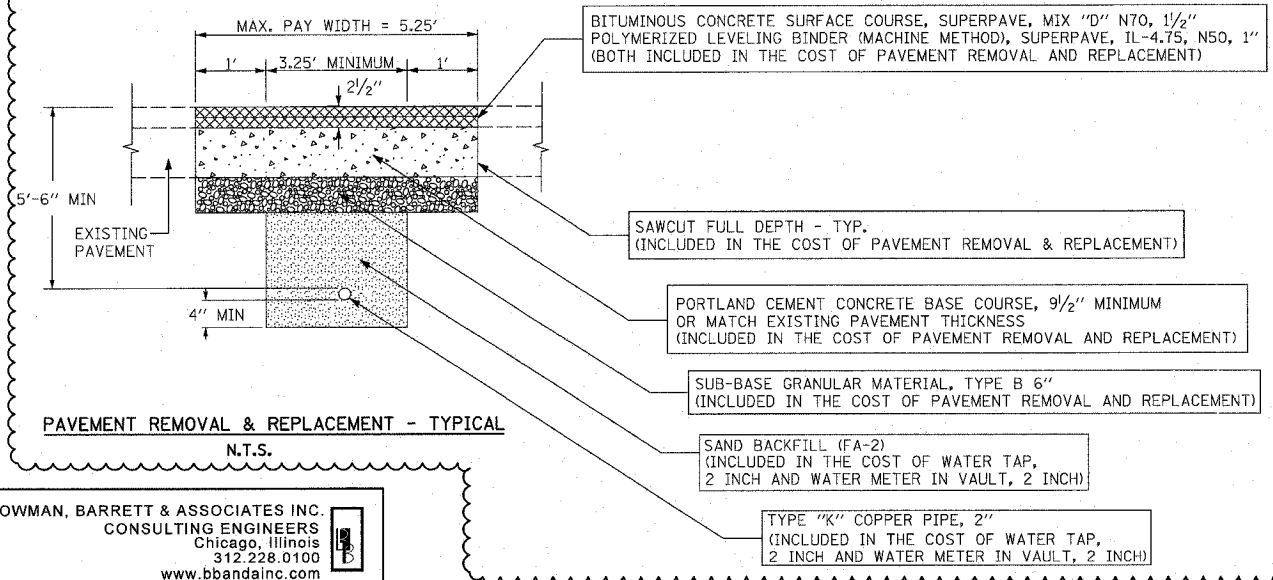
M:\660\cadd\04\11\22F\22F_SHEET S660_22F\CDT03.dgn 5/29/2008 3:16:17 PM



SIDEWALK REMOVAL & REPLACEMENT - TYPICAL
N.T.S.



PARKWAY REMOVAL & REPLACEMENT - TYPICAL
N.T.S.



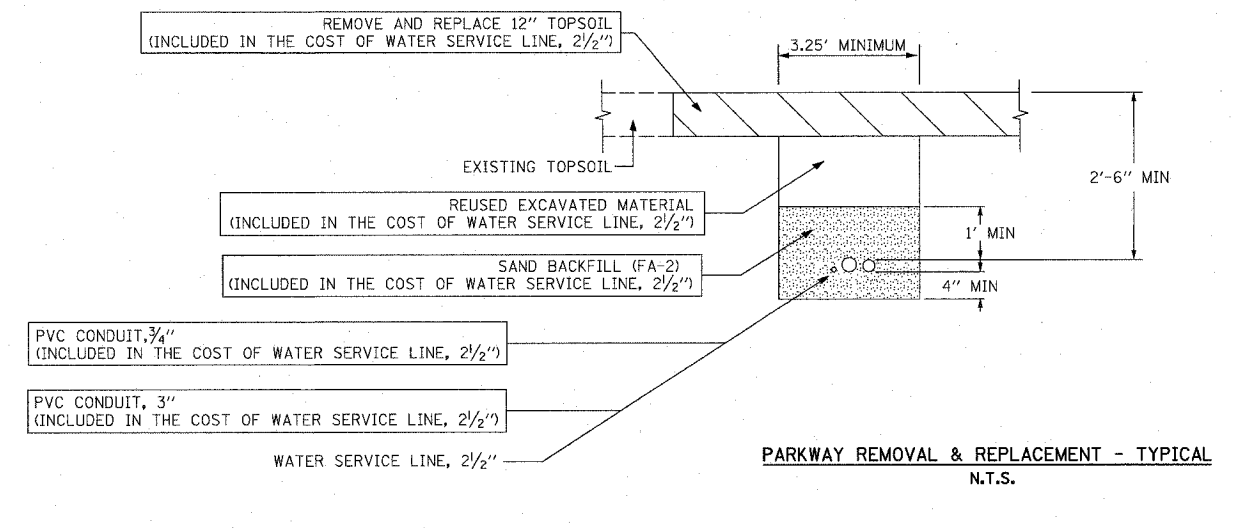
PAVEMENT REMOVAL & REPLACEMENT - TYPICAL
N.T.S.

BOWMAN, BARRETT & ASSOCIATES INC.
CONSULTING ENGINEERS
Chicago, Illinois
312.228.0100
www.bbandainc.com

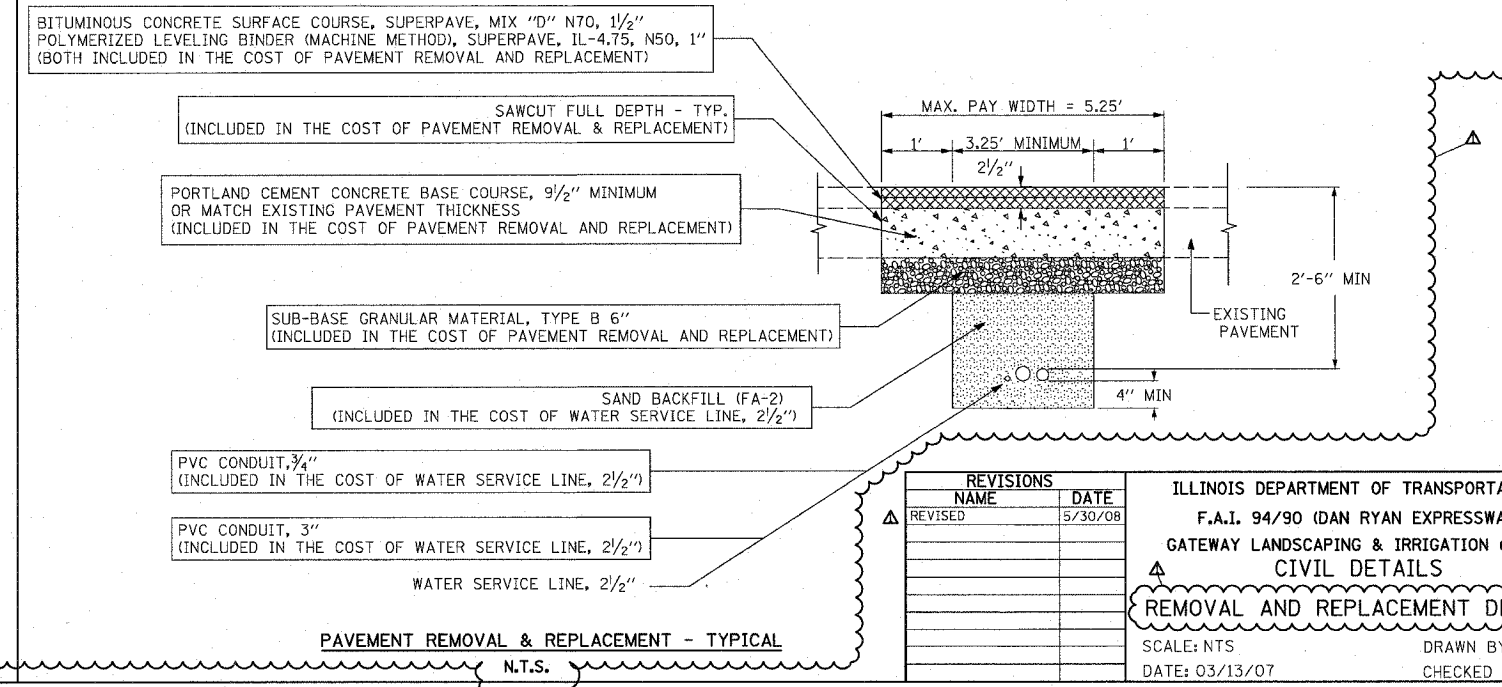
NOTES:

1. ALL BACKFILL MATERIAL (SAND BACKFILL, SUB-BASE GRANULAR MATERIAL, TYPE B AND REUSED EXCAVATED MATERIAL) SHALL BE DEPOSITED IN UNIFORM LIFTS NOT EXCEEDING 12" IN DEPTH, LOOSE MEASUREMENT, AND EACH LIFT SHALL BE COMPACTED BY MECHANICAL MEANS TO THE SATISFACTION OF THE ENGINEER.
2. PAVEMENT SHALL BE REMOVED TO NEAREST CONSTRUCTION JOINT IF TRENCH EDGE IS 2' OR LESS FROM JOINT (TO BE DETERMINED BY THE ENGINEER). THE MAX. PAY WIDTH WILL BE INCREASED ACCORDINGLY AT ANY SUCH LOCATIONS.
3. BITUMINOUS MATERIALS (PRIME COAT) SHALL BE PLACED ON THE NEWLY PLACED PORTLAND CEMENT CONCRETE BASE COURSE, 9/2" AND ON THE NEWLY PLACED POLYMERIZED LEVELING BINDER (MACHINE METHOD), SUPERPAVE, IL-4.75, N50, 1"

TYPE 'K' COPPER PIPE, 2"
WATER SERVICE, LINE 2 1/2"



PARKWAY REMOVAL & REPLACEMENT - TYPICAL
N.T.S.



PAVEMENT REMOVAL & REPLACEMENT - TYPICAL
N.T.S.

REVISIONS		DATE
NAME		
REVISOR		5/30/08

ILLINOIS DEPARTMENT OF TRANSPORTATION
F.A.I. 94/90 (DAN RYAN EXPRESSWAY)
GATEWAY LANDSCAPING & IRRIGATION @ 35TH
CIVIL DETAILS
REMOVAL AND REPLACEMENT DETAILS
SCALE: NTS
DATE: 03/13/07
DRAWN BY: JDC
CHECKED BY: DM

CDT-03

5/29/2008 3:16:17 PM