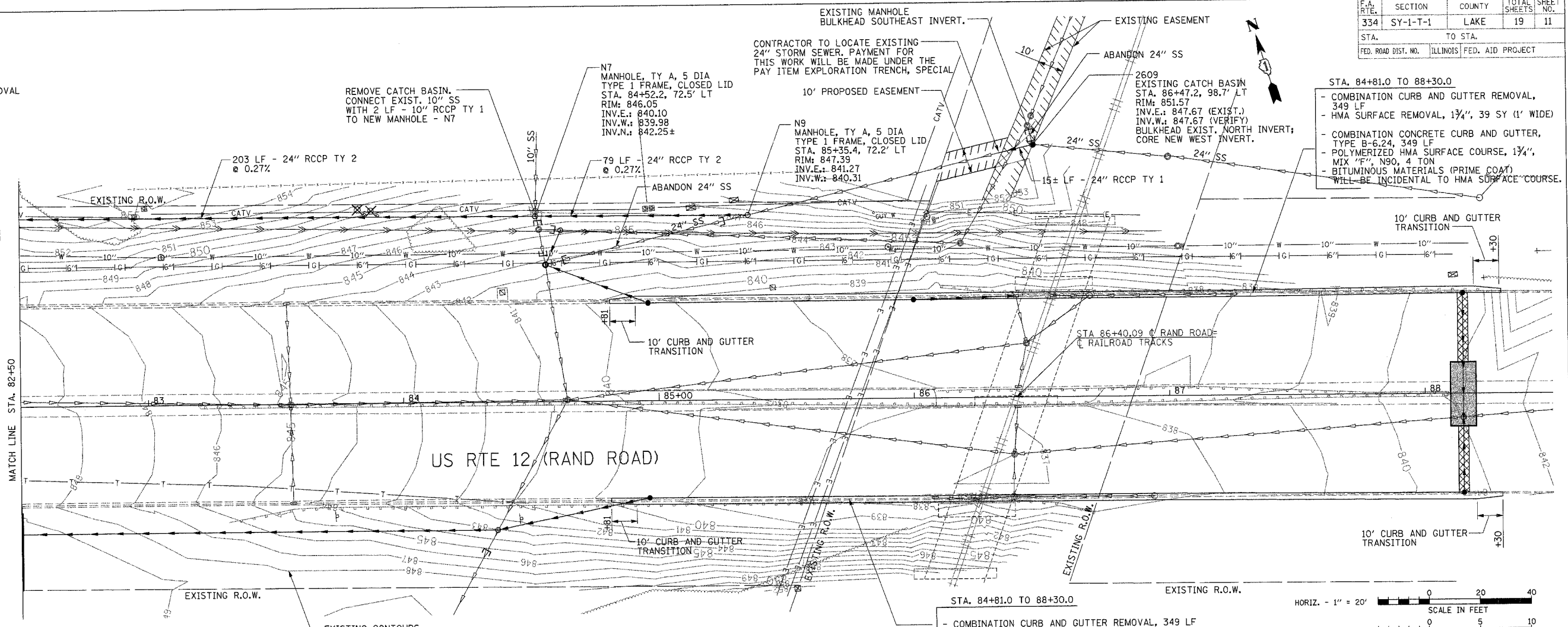


F.A. RTE.	SECTION	COUNTY	TOTAL SHEETS	SHEET NO.
334	SY-1-T-1	LAKE	19	11
STA.	TO STA.			
FED. ROAD DIST. NO.	ILLINOIS FED. AID PROJECT			

**LEGEND:**

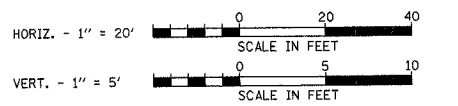
18" TREE REMOVAL

FOR CONTINUATION OF PROPOSED IMPROVEMENT SEE SHEET NO. 10



- STA. 84+81.0 TO 88+30.0
- COMBINATION CURB AND GUTTER REMOVAL, 349 LF
  - HMA SURFACE REMOVAL, 1 3/4", 39 SY (1' WIDE)
  - COMBINATION CONCRETE CURB AND GUTTER, TYPE B-6.24, 349 LF
  - POLYMERIZED HMA SURFACE COURSE, 1 3/4", MIX "F", N90, 4 TON
  - BITUMINOUS MATERIALS (PRIME COAT) WILL BE INCIDENTAL TO HMA SURFACE COURSE.

- STA. 84+81.0 TO 88+30.0
- COMBINATION CURB AND GUTTER REMOVAL, 349 LF
  - HMA SURFACE REMOVAL, 1 3/4", 39 SY (1' WIDE)
  - COMBINATION CONCRETE CURB AND GUTTER, TYPE B-6.24, 349 LF
  - POLYMERIZED HMA SURFACE COURSE, 1 3/4", MIX "F", N90, 4 TON
  - BITUMINOUS MATERIALS (PRIME COAT) WILL BE INCIDENTAL TO HMA SURFACE COURSE.



DATE: \_\_\_\_\_ BY: \_\_\_\_\_

PLAN: \_\_\_\_\_

PROF. DATE: 3/25/2008

FILE NAME: 3/25/2008 / IN

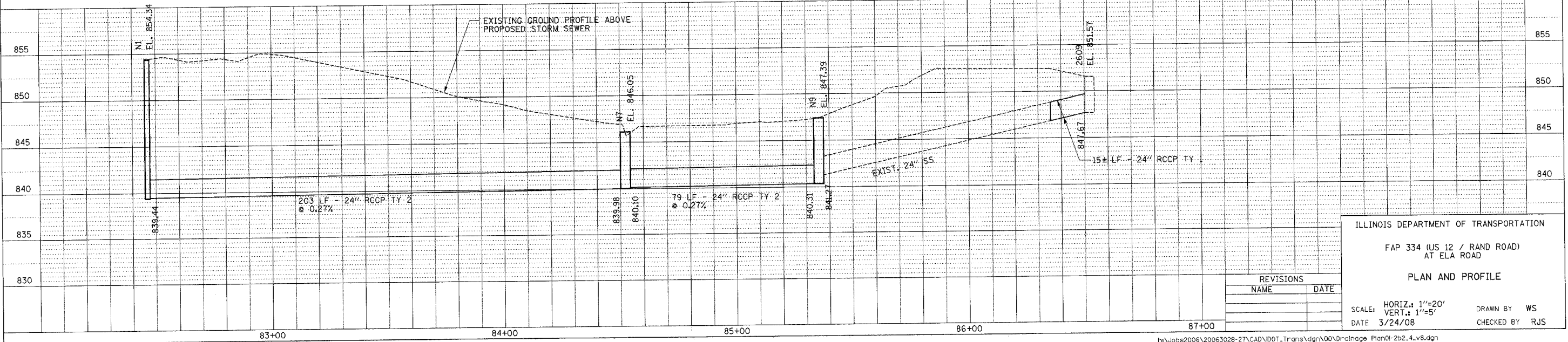
USER NAME: USER

DATE: \_\_\_\_\_ BY: \_\_\_\_\_

PROF. DATE: 3/25/2008

FILE NAME: 3/25/2008 / IN

USER NAME: USER



ILLINOIS DEPARTMENT OF TRANSPORTATION

FAP 334 (US 12 / RAND ROAD) AT ELA ROAD

PLAN AND PROFILE

REVISIONS

NO.	NAME	DATE

SCALE: HORIZ.: 1"=20'  
VERT.: 1"=5'

DATE: 3/24/08

DRAWN BY: WS  
CHECKED BY: RJS