

CONTRACT NO. 60C12

FAP ROUTE NO.	SECTION	COUNTY	TOTAL SHEETS	SHEET NO.
334	SY-1-T-1	LAKE	19	1
FED. ROAD DIST. NO.	ILLINOIS	FED. AID PROJECT		

D-91-122-07

STATE OF ILLINOIS
DEPARTMENT OF TRANSPORTATION
DIVISION OF HIGHWAYS
**PLANS FOR PROPOSED
HIGHWAY**
FAP 334 (US 12 /RAND ROAD)
SECTION: SY-1-T-1
AT ELA ROAD
STORM SEWER REPAIR
LAKE COUNTY
C-91-122-07

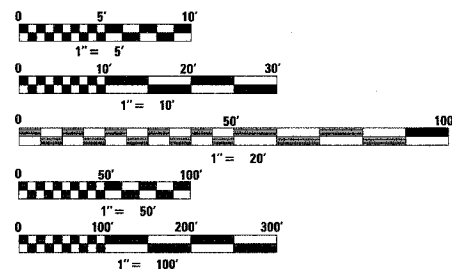
FOR INDEX OF SHEETS, SEE SHEET NO. 2

TRAFFIC DATA

EXISTING ADT
US 12 /RAND ROAD - 42,700 (2006)
ELA ROAD - 14,300 (2006)

SPEED LIMIT 45 MPH - US 12 /RAND ROAD
SPEED LIMIT 30 MPH - ELA ROAD

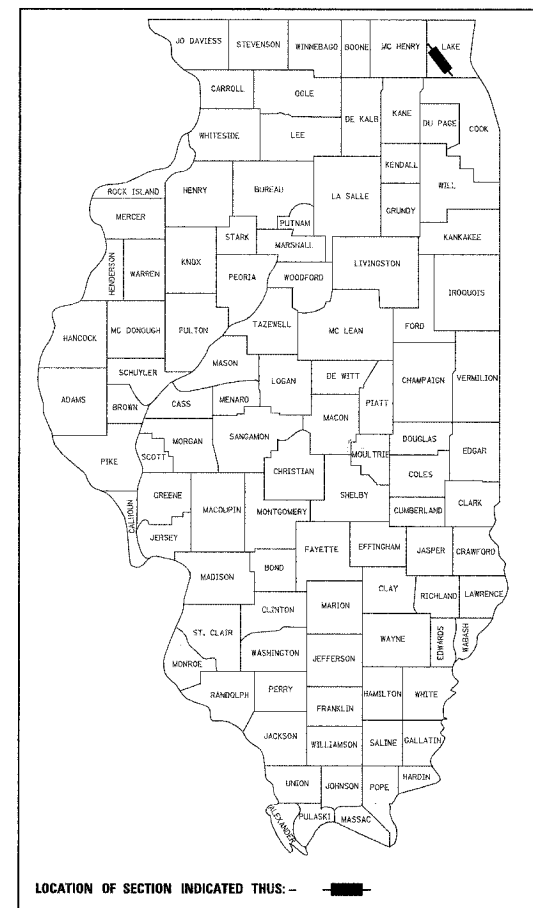
IMPROVEMENT LOCATED
IN THE VILLAGE OF
LAKE ZURICH



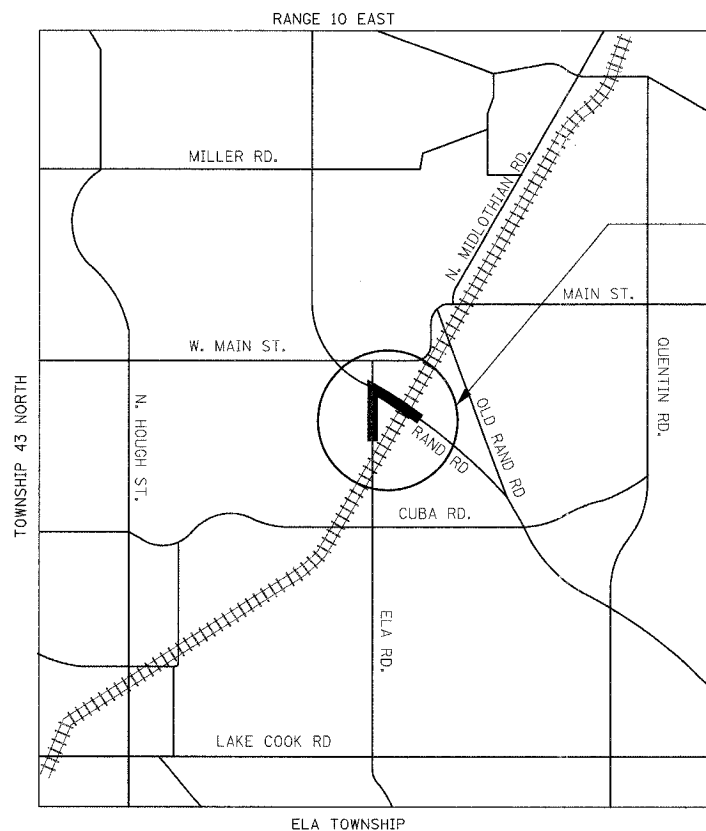
FULL SIZE PLANS HAVE BEEN PREPARED USING STANDARD
ENGINEERING SCALES, REDUCED SIZED PLANS WILL NOT
CONFORM TO STANDARD SCALES, IN MAKING MEASUREMENTS
ON REDUCED PLANS, THE ABOVE SCALES MAY BE USED.

J.U.L.I.E. JOINT UTILITY LOCATION INFORMATION
FOR EXCAVATION 1-800-892-0123

CONTRACT NO. 60C12



LOCATION OF SECTION INDICATED THUS: -



PROJECT LOCATION

Don M. Johnson
3-20-08
Professional Engineer of Illinois
Exp. 11-30-09

STATE OF ILLINOIS
DEPARTMENT OF TRANSPORTATION
DIVISION OF HIGHWAYS

SUBMITTED *March 24* 20 08

Don M. Johnson
DEPUTY DIRECTOR OF HIGHWAYS, REGION 1 ENGINEER

May 9, 20 08
Eric E. Haral
ENGINEER OF DESIGN AND ENVIRONMENT

May 9, 20 08
Christine M. Reed
DIRECTOR, DIVISION OF HIGHWAYS

PRINTED BY THE AUTHORITY OF
THE STATE OF ILLINOIS

GRAEF, ANHALT, SCHLOEMER & ASSOCIATES, INC.
ENGINEERS & SCIENTISTS
8501 W. Higgins Road, Suite 280
Chicago, Illinois 60631
(773) 399-0112

DISTRICT ONE PLAN PREPARATION ENGINEER: KEN ENG (847) 705-4247

CONTRACT NO. 60C12

F.A. ROUTE NO.	SECTION	COUNTY	TOTAL SHEETS	SHEET NO.
334	*	LAKE	19	2
STA. TO STA.		ILLINOIS FED. AID PROJECT		

* SY-1-T-1

INDEX OF SHEETS

- 1 COVER SHEET
- 2 INDEX OF SHEETS, STATE STANDARDS, GENERAL NOTES AND HOT MIX ASPHALT MIXTURE REQUIREMENTS
- 3 SUMMARY OF QUANTITIES
- 4-5 ALIGNMENTS, TIES & BENCH MARKS
- 6-7 MAINTENANCE OF TRAFFIC
- 8-11 PLAN AND PROFILE
- 12 PAVEMENT MARKING PLAN
- 13 EROSION CONTROL PLAN
- 14 PAVEMENT PATCHING FOR HMA SURFACE PAVEMENT
- 15 SIGNING FOR FLAGGING OPERATIONS AT WORK ZONE OPENINGS
- 16 TRAFFIC CONTROL AND PROTECTION FOR SIDE ROADS, INTERSECTIONS, AND DRIVEWAYS
- 17 DISTRICT ONE TYPICAL PAVEMENT MARKINGS
- 18 PAVEMENT MARKING LETTERS AND SYMBOLS FOR TRAFFIC STAGING
- 19 ARTERIAL ROAD INFORMATION SIGN

STATE STANDARDS

STD. NO. DESCRIPTION

- 000001-05 STANDARD SYMBOLS, ABBREVIATIONS AND PATTERNS
- 280001-04 TEMPORARY EROSION CONTROL SYSTEMS
- 442201-03 CLASS C AND D PATCHES
- 542301-01 PRECAST REINFORCED CONCRETE FLARED END SECTION
- 542311 GRATING FOR CONCRETE FLARED END SECTION (FOR 24" (600 MM) THRU 54" (1300 MM) PIPE)
- 602001 CATCH BASIN, TYPE A
- 602011 CATCH BASIN, TYPE C
- 602401-01 MANHOLE, TYPE A
- 602406-02 MANHOLE, TYPE A, 6' (1.8 m) DIAMETER
- 602411 MANHOLE, TYPE A, 7' (2.1 m) DIAMETER
- 602601-01 PRECAST REINFORCED CONCRETE FLAT SLAB TOP
- 602701-01 MANHOLE STEPS
- 604001-02 FRAME AND LIDS, TYPE 1
- 604091-01 FRAME AND GRATE, TYPE 24
- 606001-03 CONCRETE CURB TYPE B AND COMBINATION CONCRETE CURB AND GUTTER
- 664001-01 CHAIN LINK FENCE
- 701001-01 OFF-ROAD OPERATIONS, 2L, 2W, MORE THAN 15' (4.5 M) AWAY
- 701006-02 OFF-ROAD OPERATIONS, 2L, 2W, 15' (4.5 M) TO 24" (600 MM) FROM PAVEMENT EDGE
- 701011-01 OFF-ROAD MOVING OPERATIONS, 2L, 2W, DAY ONLY
- 701101-01 OFF-ROAD OPERATIONS, MULTILANE, 15' (4.5 M) TO 24" (600 MM) FROM PAVEMENT EDGE
- 701106-01 OFF-ROAD OPERATIONS, MULTILANE, MORE THAN 15' (4.5 M) AWAY
- 701422-01 LANE CLOSURE, MULTILANE, FOR SPEED >= 45 MPH TO 55 MPH
- 701901 TRAFFIC CONTROL DEVICES
- 780001-01 TYPICAL PAVEMENT MARKINGS

GENERAL NOTES

1. BEFORE STARTING ANY EXCAVATION, THE CONTRACTOR SHALL CALL "JULIE" AT 800-892-0123 OR "CUAN" (CHICAGO UTILITY ALERT NETWORK), 312-744-700 FOR FIELD LOCATIONS OF BURIED ELECTRIC, TELEPHONE AND GAS FACILITIES. (48 HOUR NOTIFICATION IS REQUIRED)
2. 10 FEET (3 METER) TRANSITIONS SHALL BE USED TO MATCH PROPOSED CURB AND GUTTER AND MEDIAN ITEMS OF WORK TO EXISTING CURBS AND GUTTERS AND MEDIANS IN THE FIELD UNLESS OTHERWISE SHOWN. THE TRANSITIONS SHALL BE PAID FOR AT THE CONTRACT UNIT PRICE FOR THE PROPOSED ITEMS OF WORK SPECIFIED.
3. THE CONTRACTOR SHALL COORDINATE CONSTRUCTION ACTIVITIES WITH UTILITY COMPANIES.
4. THE CONTRACTOR WILL NOT BE ALLOWED TO SET UP A YARD OR FIELD OFFICE ON STATE PROPERTY WITHOUT WRITTEN PERMISSION FROM THE DEPARTMENT.
5. WHEN ARTIFICIAL LIGHTING IS USED IN NIGHT OPERATIONS THE CONTRACTOR SHALL EXERCISE THE UTMOST PRECAUTIONS IN PREVENTING ADVERSE VISIBILITY TO THE MOTORING PUBLIC AND ADJOINING RESIDENTIAL AREAS.
6. DURING CONSTRUCTION, AGGREGATE SURFACE COURSE TYPE B WILL ALSO BE USED TO PROVIDE TEMPORARY RAMPS AT INTERSECTIONS, BUILDING ENTRANCES, AND AS DETERMINED BY THE ENGINEER FOR PEDESTRIAN MOVEMENT.
7. ACCESS SHALL BE PROVIDED AT ALL TIMES TO PROPERTIES ABUTTING THE PROPOSED IMPROVEMENT.
8. FOR PAVEMENT MARKING, REFER TO DISTRICT ONE TYPICAL MARKINGS FOR DETAILS NOT SHOWN.
9. MATCH EXISTING PAVEMENT MARKINGS AT PROJECT LIMITS.
10. THE CONTRACTOR SHALL SAW CUT PAVEMENT PRIOR TO REMOVING PAVEMENT FOR PATCHING. THE COST FOR SAW CUTTING WILL NOT BE PAID FOR SEPARATELY BUT INCLUDED IN THE COST OF CLASS D PATCHES OF TYPE SPECIFIED.
11. THE RESIDENT ENGINEER SHALL CONTACT THE TRAFFIC CONTROL SUPERVISER AT (847) 705-4470 A MINIMUM OF 72 HOURS PRIOR TO THE PLACEMENT OF ANY TEMPORARY TRAFFIC CONTROL DEVICES.
12. LOCATIONS OF ALL DRAINAGE STRUCTURES ARE MEASURED FROM CENTERLINE OF CONSTRUCTION TO THE CENTER OF FRAME FOR MANHOLES AND PARKWAY CATCH BASINS AND THE EDGE OF PAVEMENT FOR CATCH BASINS AND GUTTER INLETS WITHIN THE PROPOSED ROADWAY, UNLESS OTHERWISE NOTED.
13. RIM ELEVATIONS FOR CATCH BASINS AND GUTTER INLETS WITHIN THE PROPOSED ROADWAY ARE GIVEN AT THE EDGE OF PAVEMENT.
14. APPLICATION POINTS FOR INVERT ELEVATIONS, STATIONS AND OFFSETS FOR FLARED END SECTIONS ARE THE DOWNSTREAM ENDS OF FLARED END SECTIONS.
15. ALL STORM SEWER ABANDONED WITHIN ELA ROAD R.O.W. WILL BE BACKFILLED WITH CONTROLLED LOW-STRENGTH MATERIAL.
16. THE CONTRACTOR SHALL NOTIFY MELISSA DEL ROSARIO, ROADSIDE DEVELOPMENT UNIT, AT (847) 705-4391 A MINIMUM 72 HOURS PRIOR TO PLANTING TREES AND SHRUBS FOR LAYOUT.
17. THE RESIDENT ENGINEER SHALL CONTACT DEBBIE HANLON AREA TRAFFIC FIELD TECHNICIAN AT 847 438-2300 TWO WEEKS PRIOR TO INSTALLING FINAL PAVEMENT MARKINGS.

HOT MIX ASPHALT MIXTURE REQUIREMENTS			
OPERATION	MIXTURE TYPE	AC TYPE	AIR VOIDS
ROADWAY	POLYMERIZED HOT-MIX ASPHALT SURFACE COURSE, MIX "F", N90 (1 3/4") (9.5mm)	SBS/SBR PG 70-22	4% @ 90 GYR
PATCHING	CLASS D PATCHES, TYPE II, 15" (HMA BINDER, IL-19 mm)	PG 64-22*	4% @ 70 GYR
	HOT-MIX ASPHALT REPLACEMENT OVER PATCHES (HMA BINDER, IL-19 mm) (1 3/4")	PG 64-22*	4% @ 70 GYR
DRIVEWAY	HOT-MIX ASPHALT BASE COURSE, 8" (HMA BINDER, IL-19 mm)	PG 64-22*	4% @ 50 GYR
	HOT-MIX ASPHALT SURFACE COURSE, MIX "C", N50 (2") (9.5mm)	PG 64-22	4% @ 50 GYR

THE UNIT WEIGHT USED TO CALCULATE ALL HMA SURFACE MIXTURE QUANTITIES IS 112/LB/SY/IN

* WHEN RAP EXCEEDS 20%, THE NEW ASPHALT BINDER SHALL BE PG 58-22

REVISIONS		ILLINOIS DEPARTMENT OF TRANSPORTATION FAP 334 (US 12 / RAND ROAD) AT ELA ROAD
NAME	DATE	
		INDEX OF SHEETS, STATE STANDARDS, GENERAL NOTES AND HOT MIX ASPHALT MIXTURE REQUIREMENTS

SCALE: NA DRAWN BY: WS
DATE: 3/24/08 CHECKED BY: RJ5



GRAEF, ANHALT, SCHLOEMER & ASSOCIATES, INC.
CHICAGO, ILLINOIS

CONTRACT NO. 60C12

F.A. ROUTE NO.	SECTION	COUNTY	TOTAL SHEETS	SHEET NO.
334	*	LAKE	19	3
STA.		TO STA.		
FED. ROAD DIST. NO.		ILLINOIS FED. AID PROJECT		
* SY-1-T-1				

SUMMARY OF QUANTITIES

ENGLISH CODE NUMBER	PAY ITEM DESCRIPTION	UNIT	URBAN TOTAL QUANTITY 100% STATE	ROADWAY QUANTITY Y007
20100110	TREE REMOVAL (6 TO 15 UNITS DIAMETER)	UNIT	30	30
20100210	TREE REMOVAL (OVER 15 UNITS DIAMETER)	UNIT	30	30
20800150	TRENCH BACKFILL	CU YD	209	209
21101615	TOPSOIL FURNISH AND PLACE, 4"	SQ YD	3,388	3,388
21300010	EXPLORATION TRENCH, SPECIAL	FOOT	30	30
25000210	SEEDING, CLASS 2A	ACRE	0.66	0.66
25000310	SEEDING, CLASS 4	ACRE	0.04	0.04
25100630	EROSION CONTROL BLANKET	SQ YD	3,388	3,388
28000250	TEMPORARY EROSION CONTROL SEEDING	POUND	210	210
28000510	INLET FILTERS	EACH	28	28
28100107	STONE RIPRAP, CLASS A4	SQ YD	24	24
28200200	FILTER FABRIC	SQ YD	24	24
35501316	HOT-MIX ASPHALT BASE COURSE, 8"	SQ YD	26	26
40601005	HOT-MIX ASPHALT REPLACEMENT OVER PATCHES	TON	2	2
40603310	HOT-MIX ASPHALT SURFACE COURSE, MIX "C", N50	TON	3	3
40603595	POLYMERIZED HOT-MIX ASPHALT SURFACE COURSE, MIX "F", N90	TON	8	8
42001300	PROTECTIVE COAT	SQ YD	233	233
44000156	HOT-MIX ASPHALT SURFACE REMOVAL, 1 3/4"	SQ YD	78	78
44000200	DRIVEWAY PAVEMENT REMOVAL	SQ YD	26	26
44000500	COMBINATION CURB AND GUTTER REMOVAL	FOOT	698	698
44001700	COMBINATION CONCRETE CURB AND GUTTER REMOVAL AND REPLACEMENT	FOOT	16	16
44002207	HOT-MIX ASPHALT REMOVAL OVER PATCHES, 1 3/4"	SQ YD	19	19
44201827	CLASS D PATCHES, TYPE II, 15 INCH	SQ YD	18	18
54213693	PRECAST REINFORCED CONCRETE FLARED END SECTIONS 48"	EACH	1	1
54247190	GRATING FOR CONCRETE FLARED END SECTION 48"	EACH	1	1
550A0040	STORM SEWERS, CLASS A, TYPE 1 10"	FOOT	2	2
550A0050	STORM SEWERS, CLASS A, TYPE 1 12"	FOOT	100	100
550A0120	STORM SEWERS, CLASS A, TYPE 1 24"	FOOT	15	15
550A0340	STORM SEWERS, CLASS A, TYPE 2 12"	FOOT	55	55
550A0360	STORM SEWERS, CLASS A, TYPE 2 15"	FOOT	30	30
550A0410	STORM SEWERS, CLASS A, TYPE 2 24"	FOOT	325	325
550A0480	STORM SEWERS, CLASS A, TYPE 2 48"	FOOT	25	25
550A0750	STORM SEWERS, CLASS A, TYPE 3 36"	FOOT	185	185
550A1030	STORM SEWERS, CLASS A, TYPE 4 30"	FOOT	7	7
550A1080	STORM SEWERS, CLASS A, TYPE 4 48"	FOOT	599	599
55101400	STORM SEWER REMOVAL 30"	FOOT	10	10
552A0200	STORM SEWERS JACKED IN PLACE, CLASS A 12"	FOOT	54	54
552A0900	STORM SEWERS JACKED IN PLACE, CLASS A 24"	FOOT	85	85
552A1600	STORM SEWERS JACKED IN PLACE, CLASS A 48"	FOOT	169	169
55039700	STORM SEWERS TO BE CLEANED	FOOT	2,027	2,027
59300100	CONTROLLED LOW-STRENGTH MATERIAL	CU YD	14	14
60201340	CATCH BASINS, TYPE A, 4'-DIAMETER, TYPE 24 FRAME AND GRATE	EACH	1	1
60208240	CATCH BASINS, TYPE C, TYPE 24 FRAME AND GRATE	EACH	4	4
* 66900200	NIN-SPECIAL WASTE DISPOSAL	CU YD	30	30
* 66900450	SPECIAL WASTE PLANS AND REPORT	L SUM	1	1
* 66900530	SOIL DISPOSAL ANALYSIS	EACH	1	1

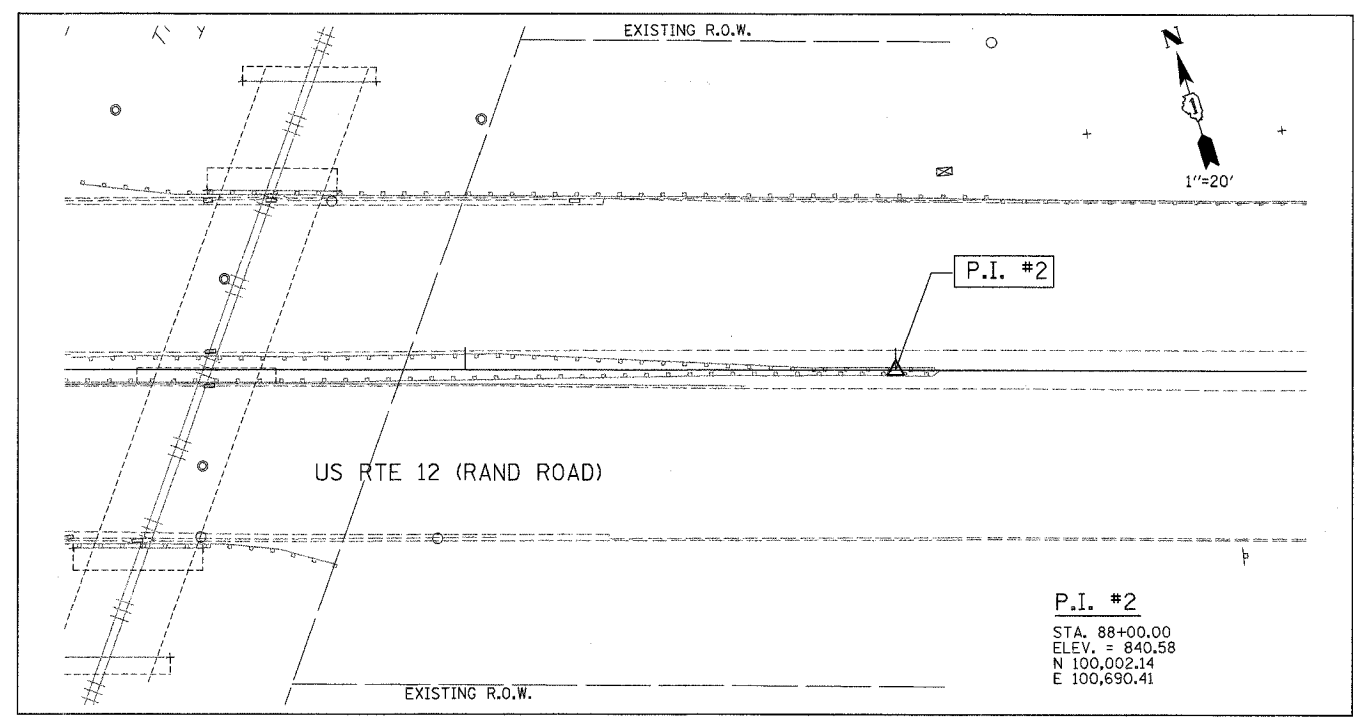
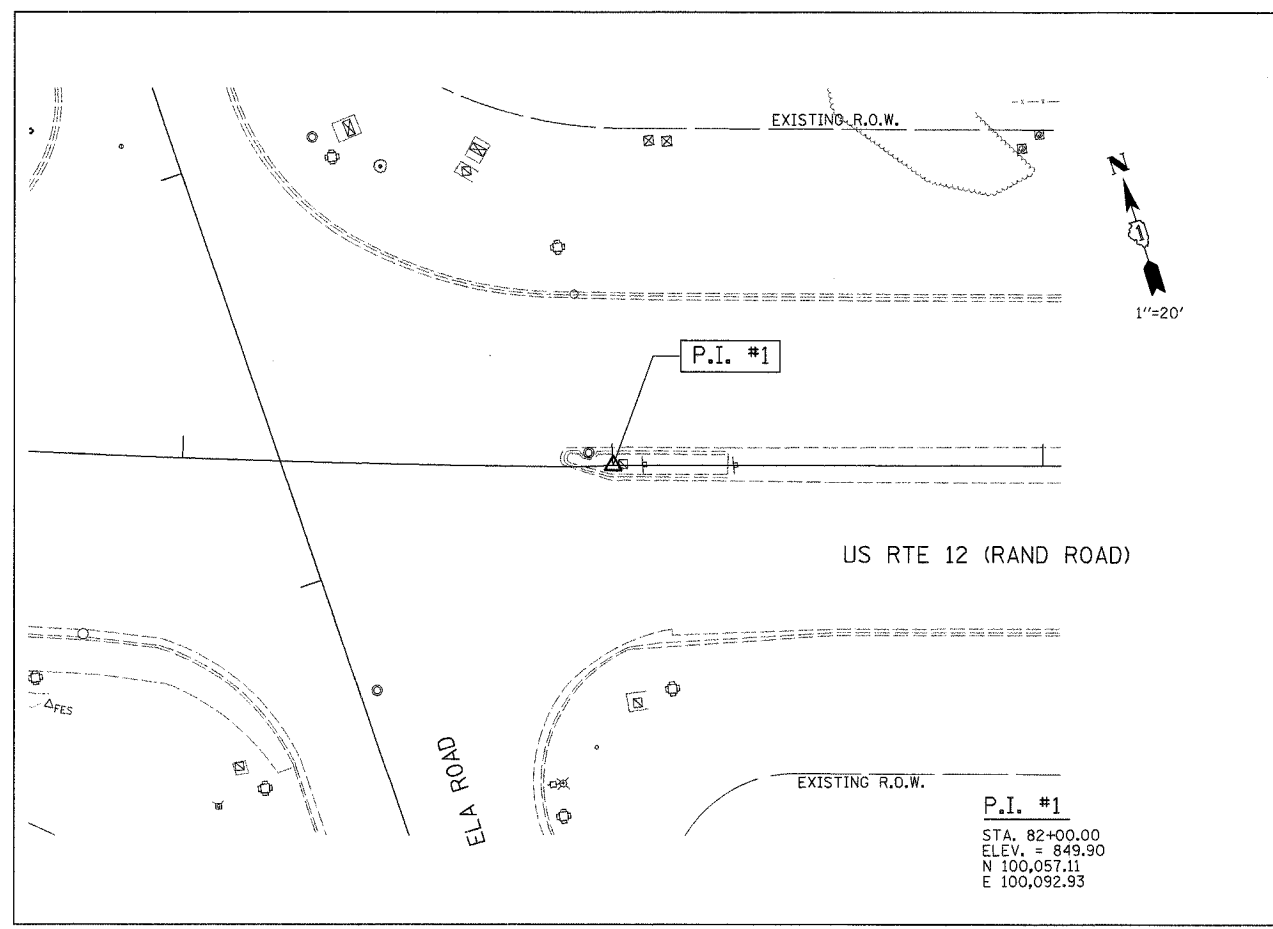
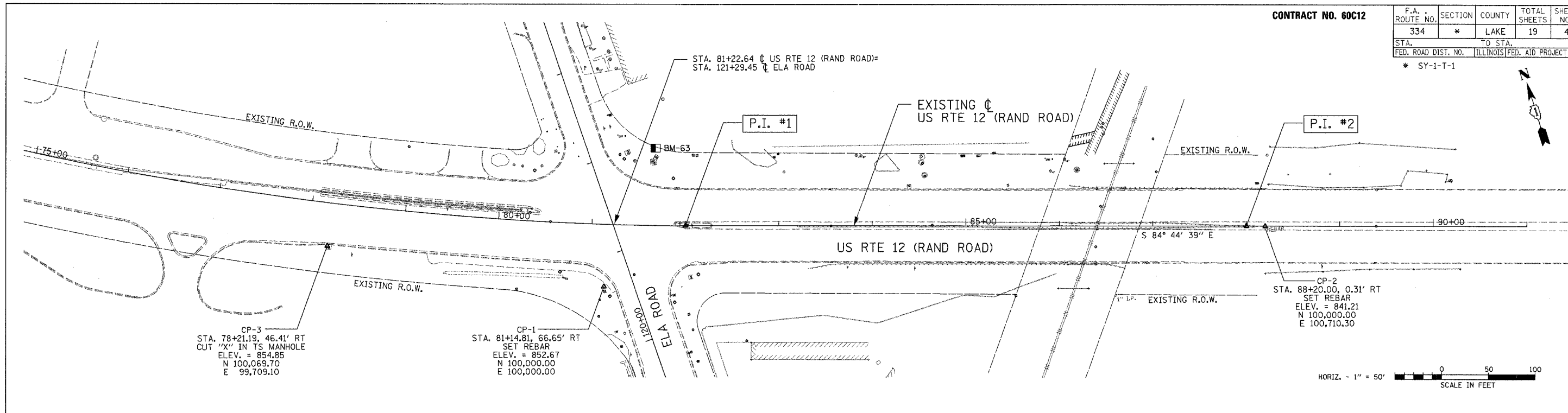
ENGLISH CODE NUMBER	PAY ITEM DESCRIPTION	UNIT	URBAN TOTAL QUANTITY 100% STATE	ROADWAY QUANTITY Y007
60218400	MANHOLES, TYPE A, 4'-DIAMETER, TYPE 1 FRAME, CLOSED LID	EACH	1	1
60221100	MANHOLES, TYPE A, 5'-DIAMETER, TYPE 1 FRAME, CLOSED LID	EACH	5	5
60223800	MANHOLES, TYPE A, 6'-DIAMETER, TYPE 1 FRAME, CLOSED LID	EACH	1	1
60224446	MANHOLES, TYPE A, 7'-DIAMETER, TYPE 1 FRAME, CLOSED LID	EACH	6	6
60251740	CATCH BASINS TO BE ADJUSTED WITH NEW TYPE 24 FRAME AND GRATE	EACH	4	4
60261540	INLETS TO BE ADJUSTED WITH NEW TYPE 24 FRAME AND GRATE	EACH	6	6
60500040	REMOVING MANHOLES	EACH	2	2
60500050	REMOVING CATCH BASINS	EACH	1	1
60605000	COMBINATION CONCRETE CURB AND GUTTER, TYPE B-6.24	FOOT	698	698
66400305	CHAIN LINK FENCE, 6'	FOOT	326	328
66410300	CHAIN LINK FENCE REMOVAL	FOOT	335	335
67000400	ENGINEERS FIELD OFFICE, TYPE A	CAL MO	4	4
67100100	MOBILIZATION	L SUM	1	1
70101800	TRAFFIC CONTROL AND PROTECTION (SPECIAL)	L SUM	1	1
70103815	TRAFFIC CONTROL SURVEILLANCE	CAL DA	90	90
70106800	CHANGEABLE MESSAGE SIGN	CAL MO	16	16
70300510	PAVEMENT MARKING TAPE, TYPE III-LETTERS AND SYMBOLS	SQ FT	110	110
70300520	PAVEMENT MARKING TAPE, TYPE III 4"	FOOT	6,697	6,697
70300540	PAVEMENT MARKING TAPE, TYPE III 6"	FOOT	104	104
70300550	PAVEMENT MARKING TAPE, TYPE III 8"	FOOT	758	758
70300560	PAVEMENT MARKING TAPE, TYPE III 12"	FOOT	371	371
70301000	WORK ZONE PAVEMENT MARKING REMOVAL	SQ FT	3,271	3,271
70400100	TEMPORARY CONCRETE BARRIER	FOOT	265	265
78000100	THERMOPLASTIC PAVEMENT MARKING - LETTERS AND SYMBOLS	SQ FT	146	146
78000200	THERMOPLASTIC PAVEMENT MARKING - LINE 4"	FOOT	5,490	5,490
78000400	THERMOPLASTIC PAVEMENT MARKING - LINE 6"	FOOT	825	825
78000600	THERMOPLASTIC PAVEMENT MARKING - LINE 12"	FOOT	290	290
78000650	THERMOPLASTIC PAVEMENT MARKING - LINE 24"	FOOT	117	117
78008200	POLYUREA PAVEMENT MARKING TYPE I - LETTERS AND SYMBOLS	SQ FT	36	36
78008210	POLYUREA PAVEMENT MARKING TYPE I - LINE 4"	FOOT	997	997
78008230	POLYUREA PAVEMENT MARKING TYPE I - LINE 6"	FOOT	38	38
78008250	POLYUREA PAVEMENT MARKING TYPE I - LINE 12"	FOOT	153	153
B2005466	TREE, PRUNUS VIRGINIANA SCHUBERT (SCHUBERT CHOKECHERRY), 6' HEIGHT, CLUMP FORM, BALLED AND BURLAPPED	EACH	2	2
C2002072	SHRUB, CORYLUS AMERICANA (AMERICAN FILBERT), 6' HEIGHT, BALLED AND BURLAPPED	EACH	4	4
X0322256	TEMPORARY INFORMATION SIGNING	SQ FT	103	103
X0325207	TELEVISION INSPECTION OF SEWER	FOOT	755	755
XX005970	UNDERWATER STRUCTURE EXCAVATION PROTECTION	L SUM	1	1
XX006694	CLEARING (SPECIAL)	SQ YD	1,390	1,390
Z0013798	CONSTRUCTION LAYOUT	L SUM	1	1
Z0048665	RAILROAD PROTECTIVE LIABILITY INSURANCE	L SUM	1	1
Z0018500	DRAINAGE STRUCTURES TO BE CLEANED	EACH	23	23
Z0030250	IMPACT ATTENUATORS, TEMPORARY (NON-REDIRECTIVE), TEST LEVEL 3	EACH	2	2

* SPECIALTY ITEMS

REVISIONS	ILLINOIS DEPARTMENT OF TRANSPORTATION
NAME	FAP 334 (US 12 / RAND ROAD)
DATE	AT ELA ROAD
	SUMMARY OF QUANTITIES
	SCALE: NA
	DATE: 3/24/08
	DRAWN BY: WS
	CHECKED BY: RJS
	GRAEF, ANHALT, SCHLOEMER & ASSOCIATES, INC.
	CHICAGO, ILLINOIS

CONTRACT NO. 60C12

F.A. ROUTE NO.	SECTION	COUNTY	TOTAL SHEETS	SHEET NO.
334	*	LAKE	19	4
STA. TO STA.		ILLINOIS FED. AID PROJECT		
FED. ROAD DIST. NO.		* SY-1-T-1		



BENCH MARKS		
NO.	DESCRIPTION	ELEVATION
BM-2	NORTH-WEST BOLT OF FIRE HYDRANT NEAR NORTH-WEST CORNER OF THEATER BUILDING	879.76
BM-63	"□" CUT IN WEST CORNER OF CONCRETE SLAB FOR CONTROL BOX AT NORTH-EAST CORNER OF ELA ROAD AND RAND ROAD	852.32

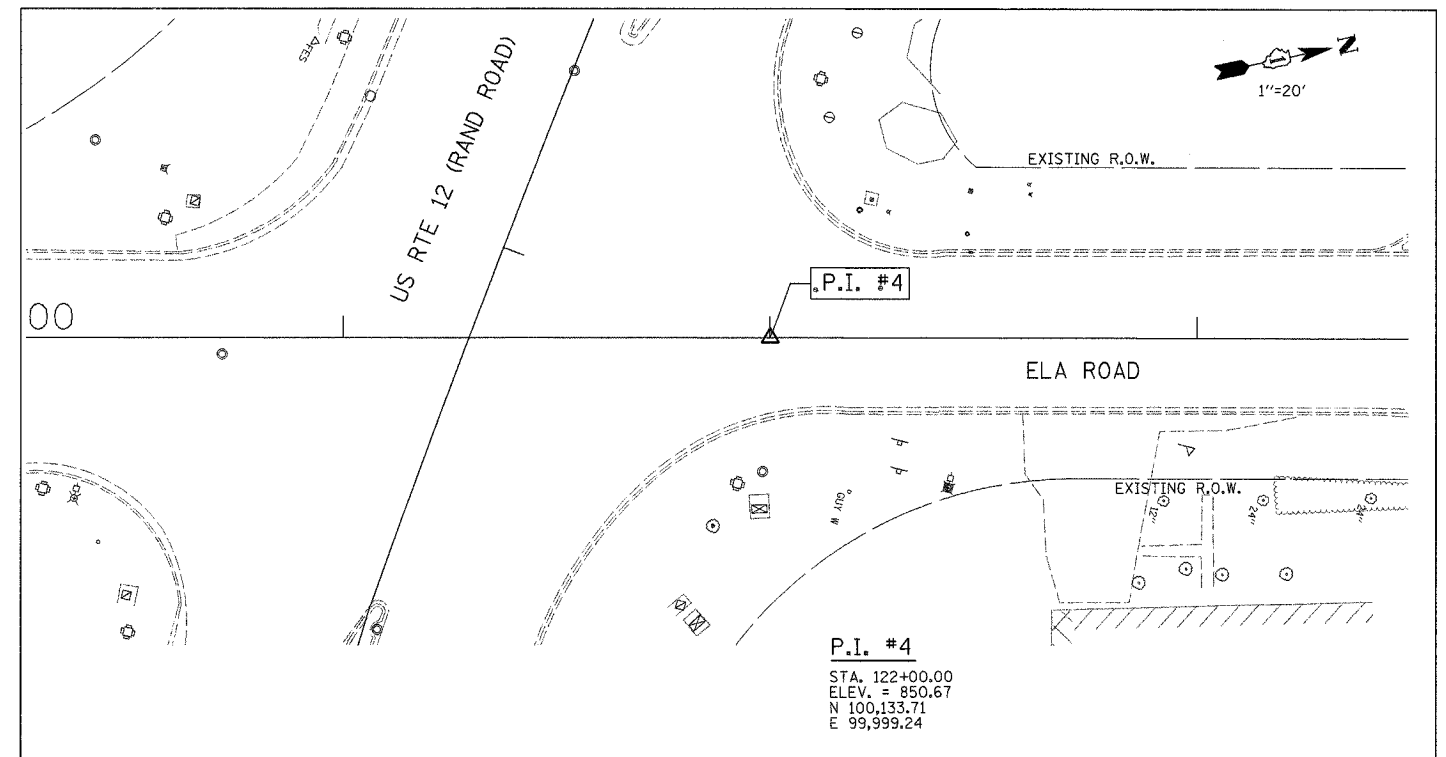
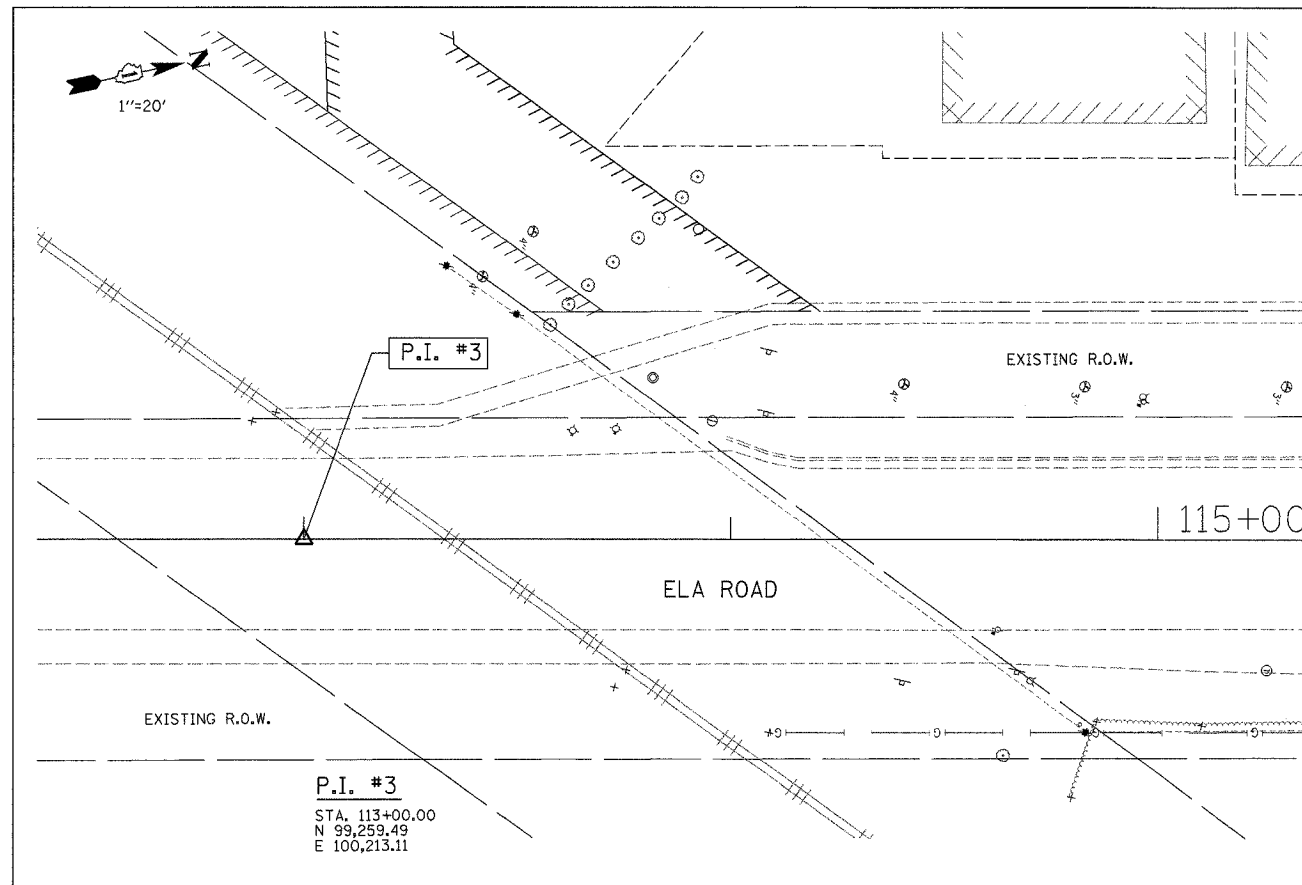
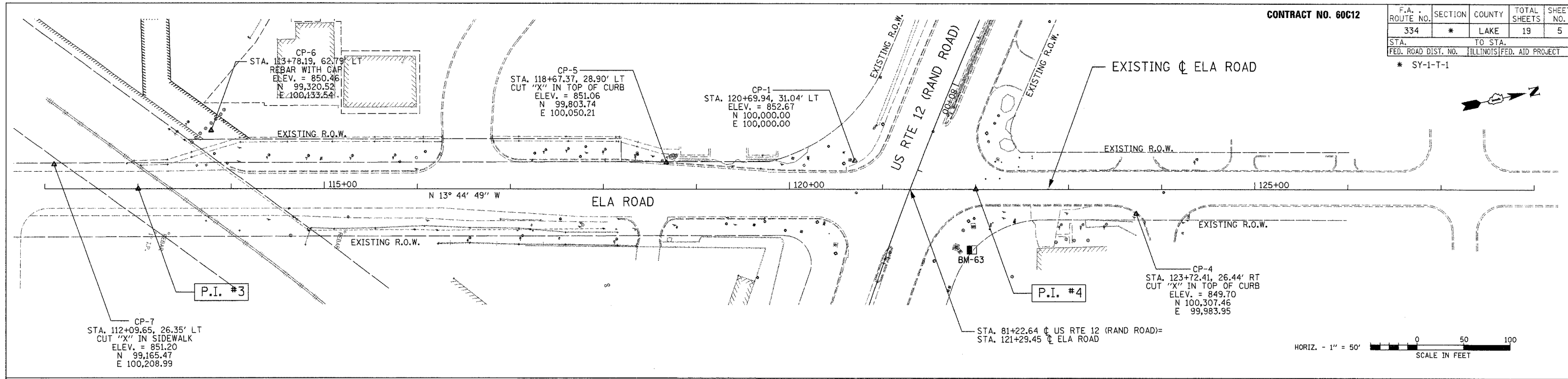
REVISIONS	
NAME	DATE

ILLINOIS DEPARTMENT OF TRANSPORTATION
 FAP 334 (US 12 / RAND ROAD)
 AT ELA ROAD
ALIGNMENTS, TIES & BENCH MARKS
 SCALE: 20' AND 50' DRAWN BY: WS
 DATE: 3/24/08 CHECKED BY: RJS

GRAEF, ANHALT, SCHLOEMER & ASSOCIATES, INC.
 CHICAGO, ILLINOIS

CONTRACT NO. 60C12

F.A. ROUTE NO.	SECTION	COUNTY	TOTAL SHEETS	SHEET NO.
334	*	LAKE	19	5
STA.		TO STA.		
FED. ROAD DIST. NO.		ILLINOIS FED. AID PROJECT		
* SY-1-T-1				





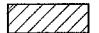
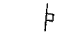






REVISIONS		ILLINOIS DEPARTMENT OF TRANSPORTATION FAP 334 (US 12 / RAND ROAD) AT ELA ROAD
NAME	DATE	
		ALIGNMENTS, TIES & BENCH MARKS

SCALE: 20' AND 50'
DATE: 3/24/08
DRAWN BY: WS
CHECKED BY: RJS



GRAEF, ANHALT, SCHLOEMER & ASSOCIATES, INC.
CHICAGO, ILLINOIS

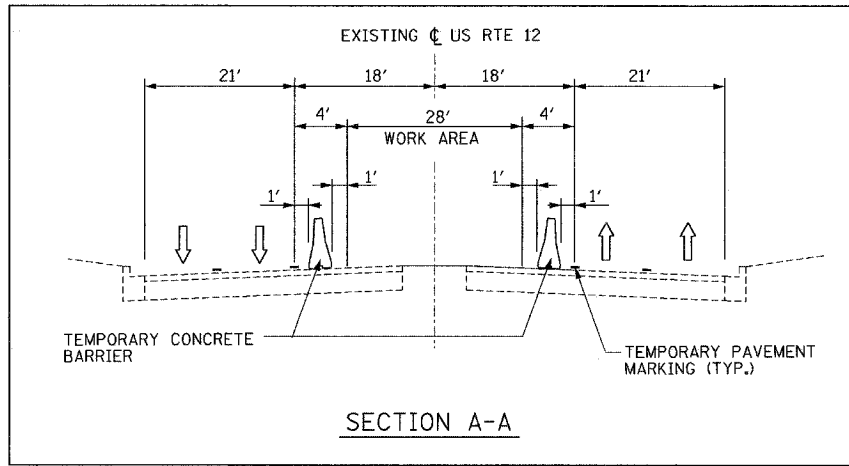
SYMBOLS

-  DIRECTION OF TRAFFIC
-  ARROW BOARD
-  WORK AREA
-  SIGN
-  DIRECTION INDICATOR BARRICADE WITH STEADY BURN MONODIRECTIONAL LIGHT
-  TYPE II BARRICADE, DRUM, OR VERTICAL BARRICADE
-  TYPE II BARRICADE, DRUM, OR VERTICAL BARRICADE WITH STEADY BURN MONODIRECTIONAL LIGHT
-  TEMPORARY CONCRETE BARRIER
-  IMPACT ATTENUATOR, TEMPORARY (NON-REDIRECTIVE)
-  STORM SEWER JACKED IN PLACE

REFER TO STANDARD 701422 FOR ADDITIONAL DETAILS

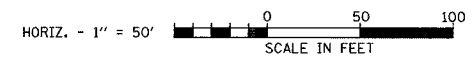
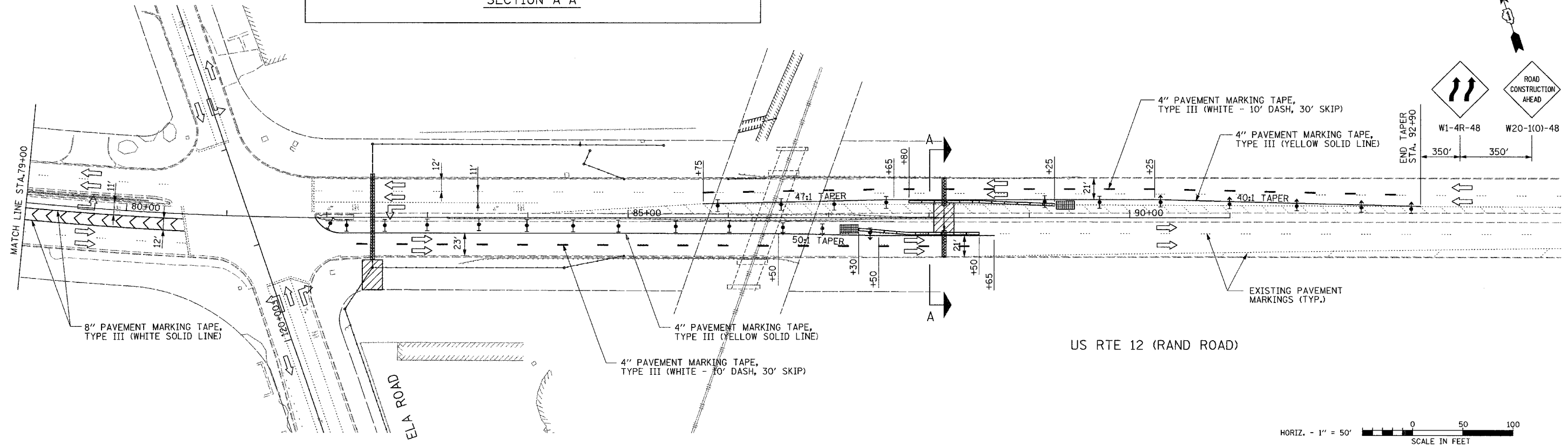
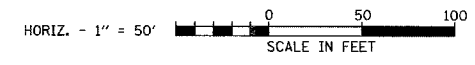


REFER TO STANDARD 701422 FOR ADVANCED SIGNING



STAGE I CONSTRUCTION

- IA. JACK IN PLACE STORM SEWER AT STA. 82+45 AND STA. 88+15. REFER TO STATE STANDARD 701101.
- IB. CONSTRUCT REMAINING STORM SEWER.



FILE NAME =	USER NAME = .USER.	DESIGNED - WS	REVISED -
\$FILEL*		DRAWN - WS	REVISED -
	PLOT SCALE = 50.0000' / IN.	CHECKED - RJS	REVISED -
	PLOT DATE = 3/26/2008	DATE - 3/24/08	REVISED -

**STATE OF ILLINOIS
DEPARTMENT OF TRANSPORTATION**

**SUGGESTED MAINTENANCE OF TRAFFIC
STAGE I**

SCALE: 50' SHEET NO. OF SHEETS STA. TO STA.

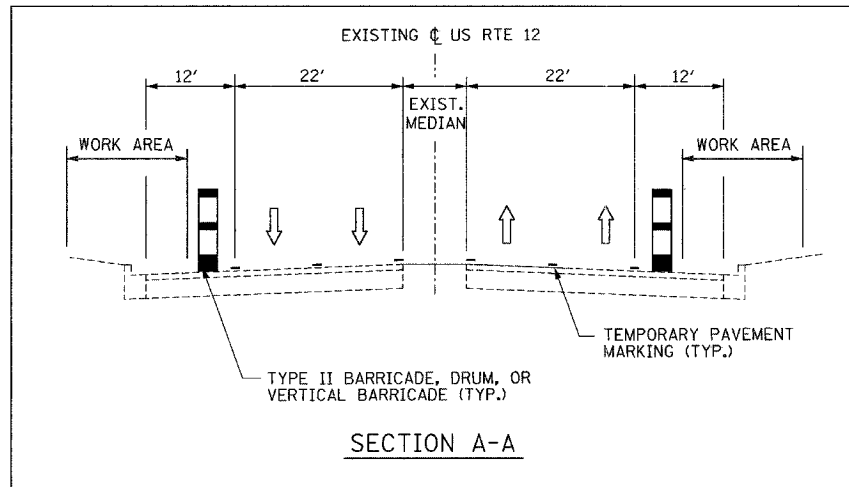
F.A. RTE.	SECTION	COUNTY	TOTAL SHEETS	SHEET NO.
334	SY-1-T-1	LAKE	19	6
CONTRACT NO. 60C12				
FED. ROAD DIST. NO. ILLINOIS FED. AID PROJECT				

REFER TO STANDARD 701422
FOR ADDITIONAL DETAILS



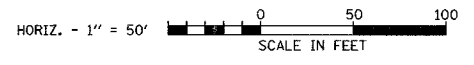
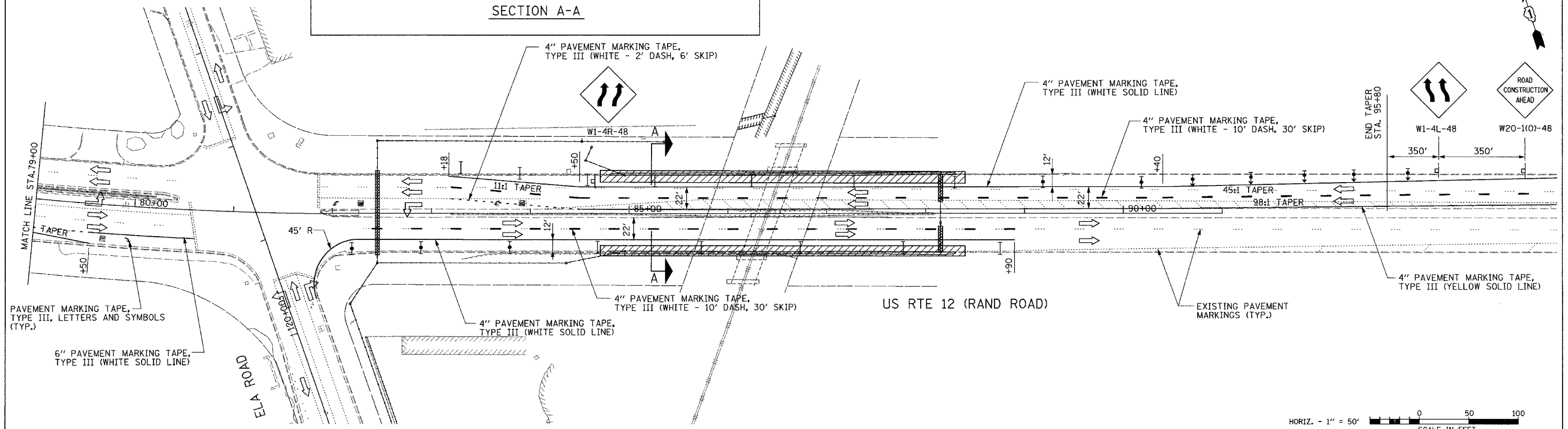
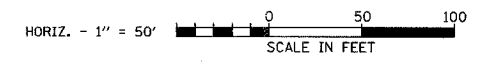
SYMBOLS

- DIRECTION OF TRAFFIC
- ARROW BOARD
- WORK AREA
- SIGN
- DIRECTION INDICATOR BARRICADE WITH STEADY BURN MONODIRECTIONAL LIGHT
- TYPE II BARRICADE, DRUM, OR VERTICAL BARRICADE
- TYPE II BARRICADE, DRUM, OR VERTICAL BARRICADE WITH STEADY BURN MONODIRECTIONAL LIGHT



STAGE II CONSTRUCTION

- I.A. CONSTRUCT COMBINATION CONCRETE CURB AND GUTTER STA. 84+81 AND STA. 88+30.
- I.B. CONSTRUCT REMAINING STORM SEWER.



FILE NAME = #FILEL#	USER NAME = _USER_	DESIGNED - WS	REVISED -
	PLOT SCALE = 50,0000' / IN.	DRAWN - WS	REVISED -
	PLOT DATE = 3/26/2008	CHECKED - RJS	REVISED -
		DATE - 3/24/08	REVISED -

**STATE OF ILLINOIS
DEPARTMENT OF TRANSPORTATION**

SUGGESTED MAINTENANCE OF TRAFFIC STAGE II			
SCALE: 50'	SHEET NO.	OF SHEETS	STA. TO STA.

F.A. RTE. 334	SECTION SY-1-T-1	COUNTY LAKE	TOTAL SHEETS 19	SHEET NO. 7
FED. ROAD DIST. NO. ILLINOIS FED. AID PROJECT			CONTRACT NO. 60C12	

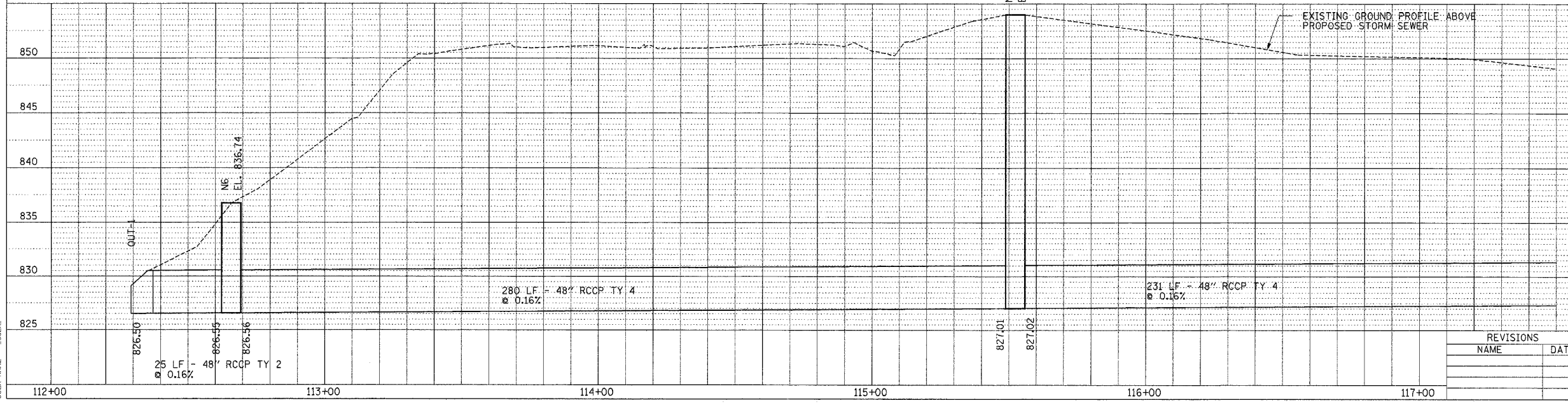
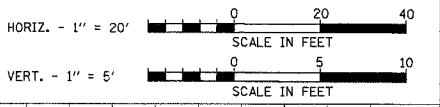
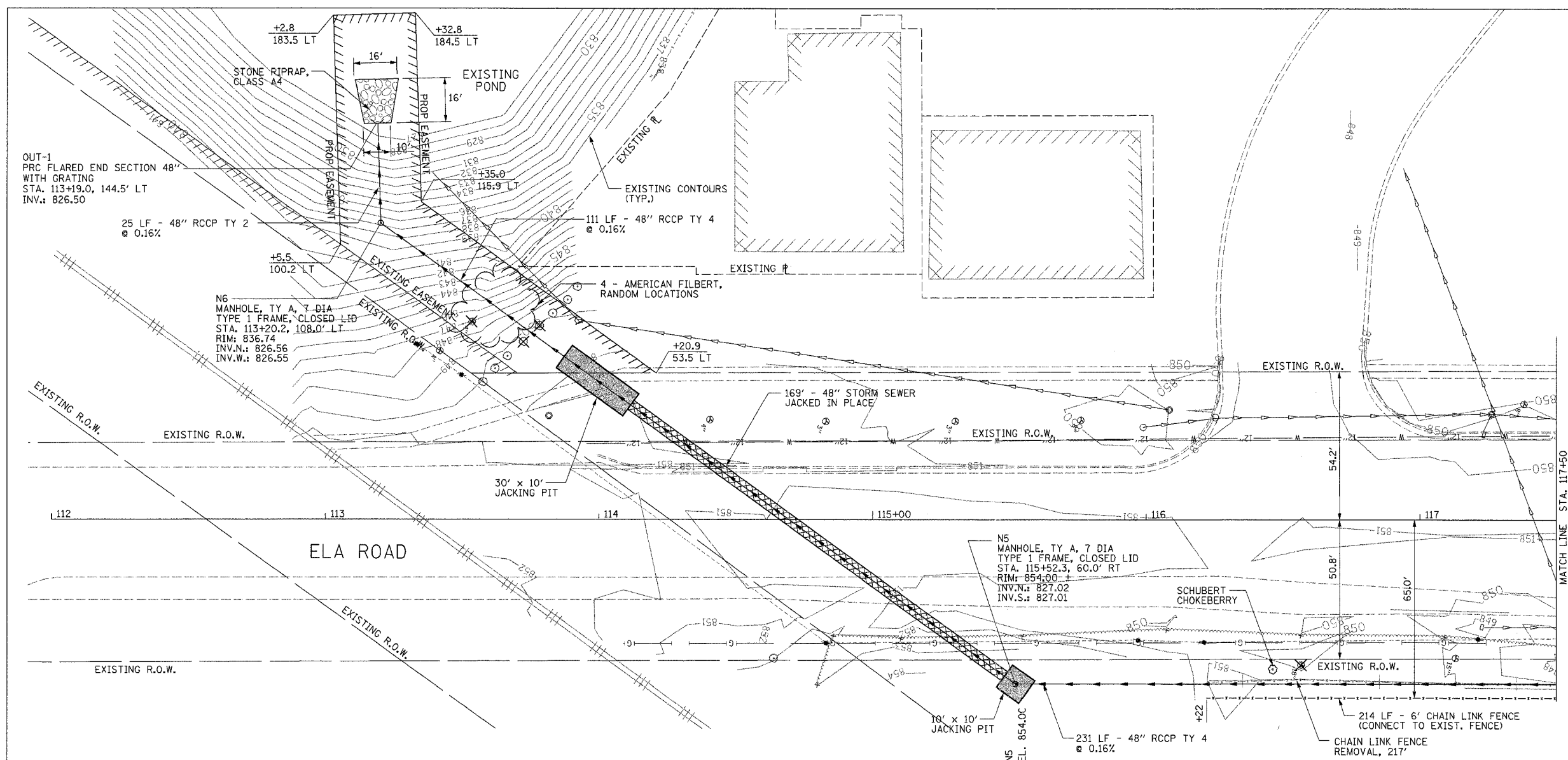
CONTRACT NO. 60C12				
F.A. RTE.	SECTION	COUNTY	TOTAL SHEETS	SHEET NO.
334	SY-1-T-1	LAKE	19	8
STA.		TO STA.		
FED. ROAD DIST. NO.		ILLINOIS FED. AID PROJECT		



LEGEND:
 X 18" TREE REMOVAL

PLAN	DATE	BY
REVISIONS		
NO.	DESCRIPTION	DATE
1	AS SHOWN	

PROFILE	DATE	BY
REVISIONS		
NO.	DESCRIPTION	DATE
1	AS SHOWN	



ILLINOIS DEPARTMENT OF TRANSPORTATION
 FAP 334 (US 12 / RAND ROAD)
 AT ELA ROAD
PLAN AND PROFILE

SCALE: HORIZ.: 1"=20'
 VERT.: 1"=5'

DATE 3/24/08

DRAWN BY WS
 CHECKED BY RJS

REVISIONS	
NAME	DATE

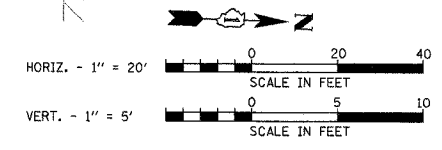
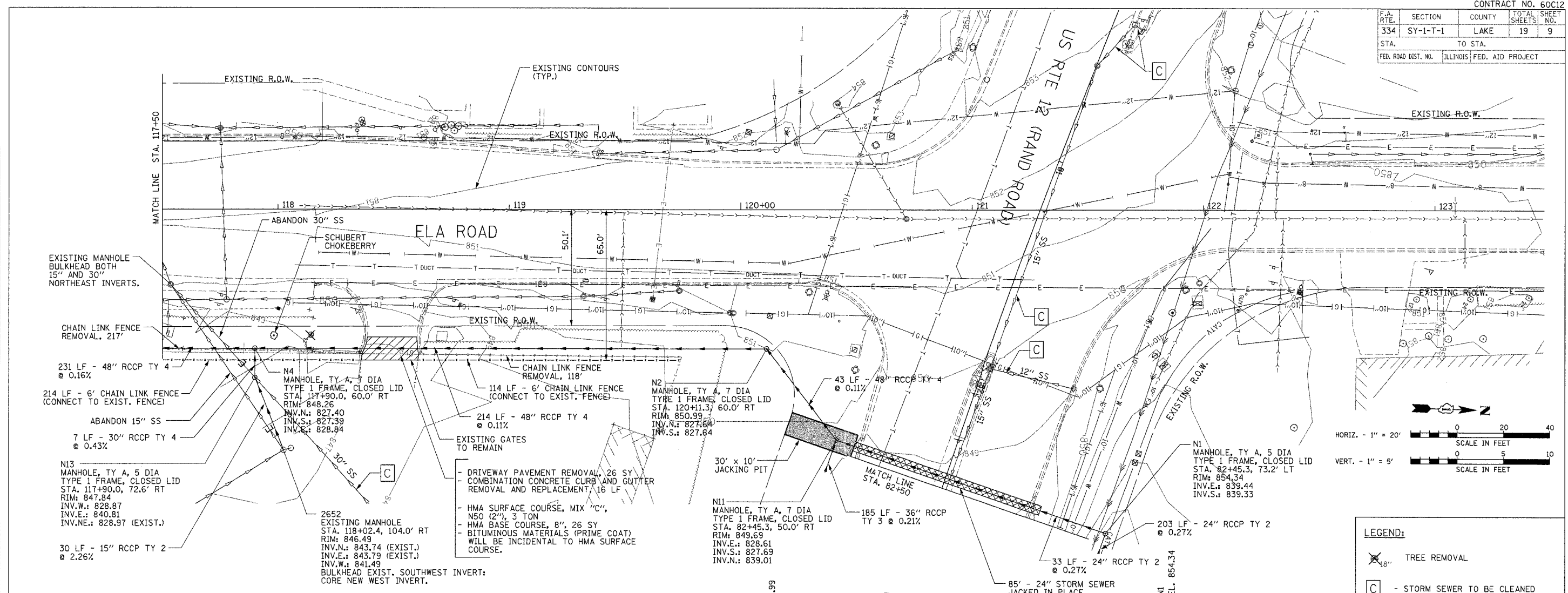
PLOT DATE = 3/25/2008
 FILE NAME = 811E18
 PLOT SCALE = 20.0000 / IN.
 USER NAME = USER

F.A. RTE.	SECTION	COUNTY	TOTAL SHEETS	SHEET NO.
334	SY-1-T-1	LAKE	19	9
STA. TO STA.		ILLINOIS FED. AID PROJECT		

PLAN
 SURVEYED BY: _____
 ADJUSTMENT CHECKED BY: _____
 DATE: _____

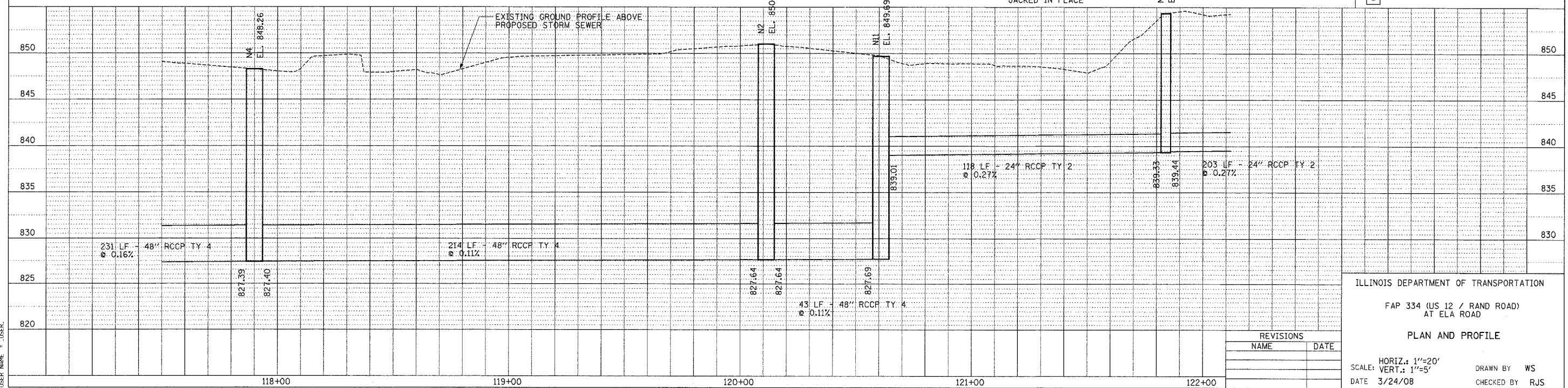
PROFILE
 SURVEYED BY: _____
 ADJUSTMENT CHECKED BY: _____
 DATE: _____

PLOT DATE = 3/25/2008
 PLOT SCALE = 24.0000 / IN.
 USER NAME = USER



LEGEND:

- TREE REMOVAL
- STORM SEWER TO BE CLEANED

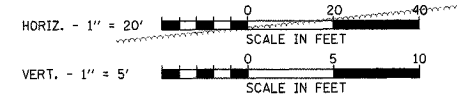
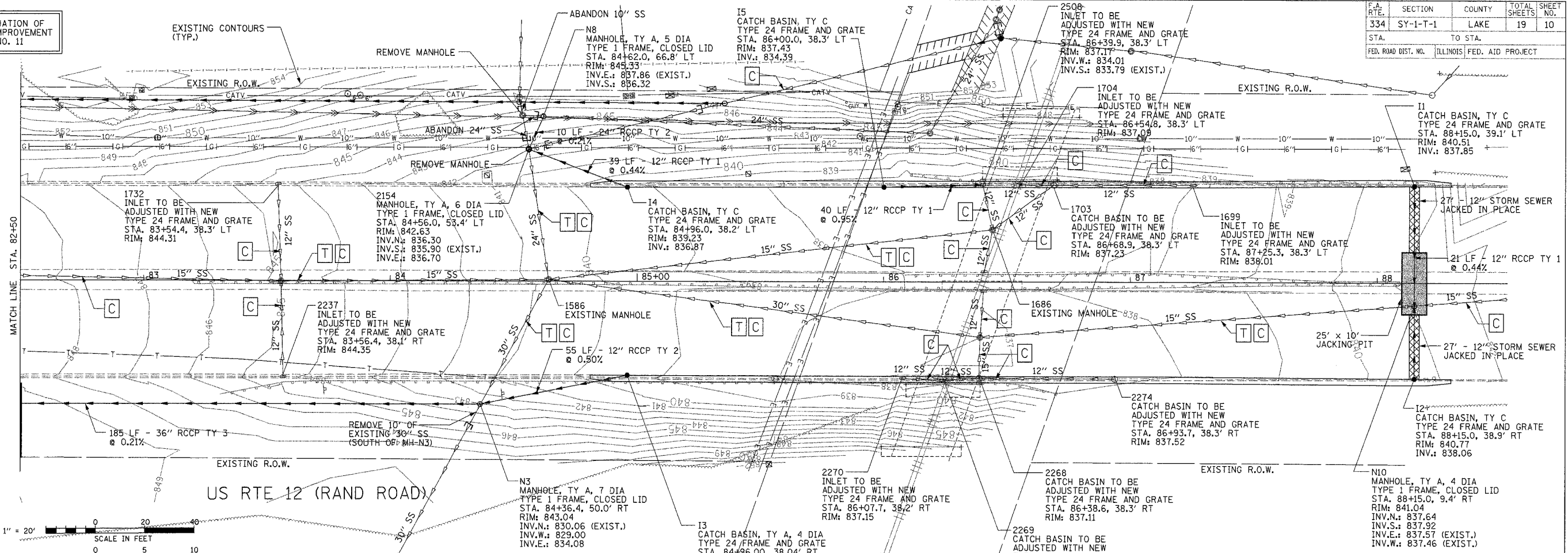


REVISIONS	
NAME	DATE

ILLINOIS DEPARTMENT OF TRANSPORTATION
 FAP 334 (US 12 / RAND ROAD)
 AT ELA ROAD
PLAN AND PROFILE
 SCALE: HORIZ.: 1"=20'
 VERT.: 1"=5'
 DATE 3/24/08
 DRAWN BY WS
 CHECKED BY RJS

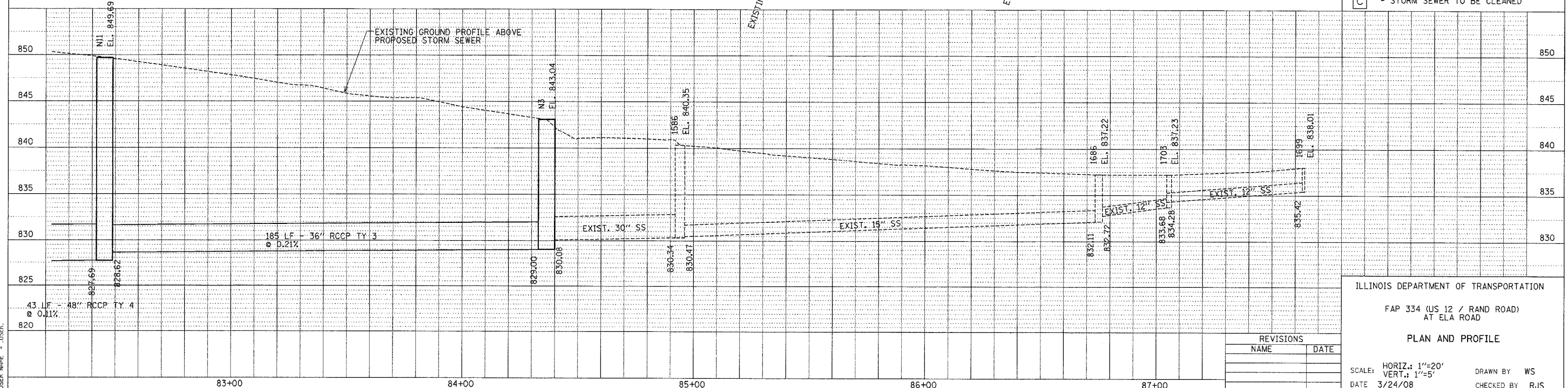
F.A. RTE.	SECTION	COUNTY	TOTAL SHEETS	SHEET NO.
334	SY-1-T-1	LAKE	19	10
STA.	TO STA.			
FED. ROAD DIST. NO.	ILLINOIS		FED. AID PROJECT	

FOR CONTINUATION OF PROPOSED IMPROVEMENT SEE SHEET NO. 11



LEGEND:

T	- STORM SEWER TO BE TELEVIEWED
C	- STORM SEWER TO BE CLEANED



ILLINOIS DEPARTMENT OF TRANSPORTATION

FAP 334 (US 12 / RAND ROAD) AT ELA ROAD

PLAN AND PROFILE

SCALE: HORIZ.: 1"=20'
 VERT.: 1"=5'

DATE 3/24/08

DRAWN BY WS
 CHECKED BY RJS

REVISIONS	
NAME	DATE

DATE: _____ BY: _____

PLAN: _____

DATE: _____ BY: _____

PROFILE: _____

DATE: _____ BY: _____

REVISIONS:

NO.	DESCRIPTION

DATE: 3/25/2008

TIME: 4:21:18 PM

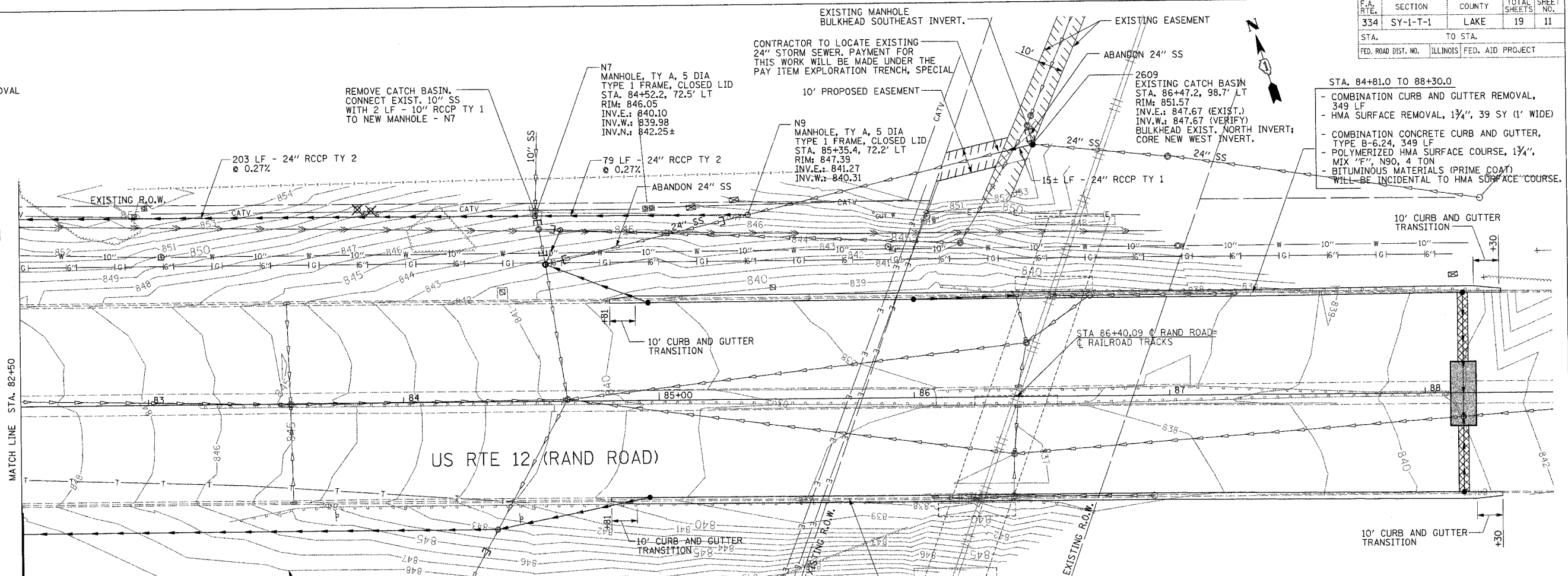
USER: RJS

F.A. RTE.	SECTION	COUNTY	TOTAL SHEETS	SHEET NO.
334	SY-1-T-1	LAKE	19	11
STA. TO STA.		TO STA.		
FED. ROAD DIST. NO.		ILLINOIS FED. AID PROJECT		

LEGEND:

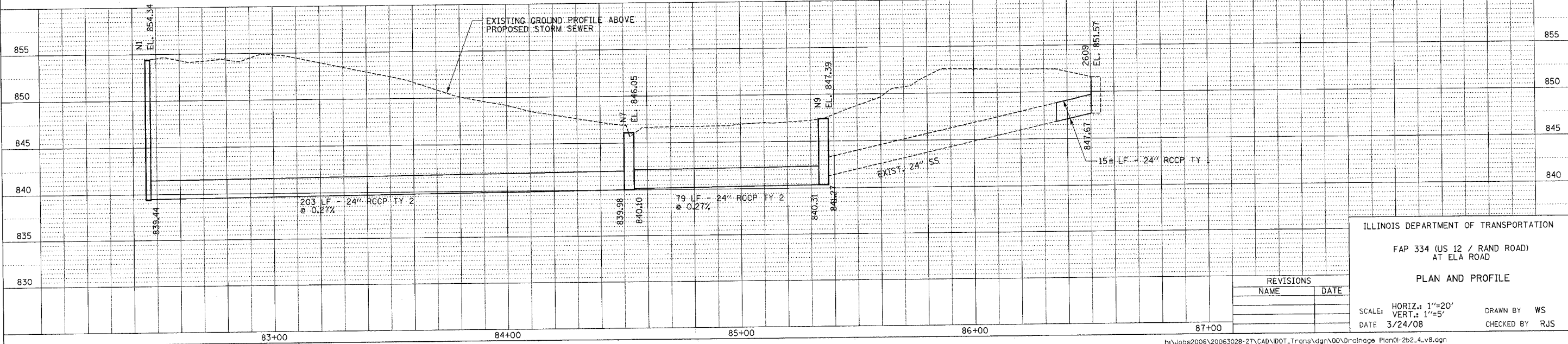
TREE REMOVAL

FOR CONTINUATION OF PROPOSED IMPROVEMENT SEE SHEET NO. 10



STA. 84+81.0 TO 88+30.0
 - COMBINATION CURB AND GUTTER REMOVAL, 349 LF
 - HMA SURFACE REMOVAL, 1 3/4", 39 SY (1' WIDE)
 - COMBINATION CONCRETE CURB AND GUTTER, TYPE B-6.24, 349 LF
 - POLYMERIZED HMA SURFACE COURSE, 1 3/4", MIX "F", N90, 4 TON
 - BITUMINOUS MATERIALS (PRIME COAT) WILL BE INCIDENTAL TO HMA SURFACE COURSE.

STA. 84+81.0 TO 88+30.0
 - COMBINATION CURB AND GUTTER REMOVAL, 349 LF
 - HMA SURFACE REMOVAL, 1 3/4", 39 SY (1' WIDE)
 - COMBINATION CONCRETE CURB AND GUTTER, TYPE B-6.24, 349 LF
 - POLYMERIZED HMA SURFACE COURSE, 1 3/4", MIX "F", N90, 4 TON
 - BITUMINOUS MATERIALS (PRIME COAT) WILL BE INCIDENTAL TO HMA SURFACE COURSE.



ILLINOIS DEPARTMENT OF TRANSPORTATION
 FAP 334 (US 12 / RAND ROAD) AT ELA ROAD
 PLAN AND PROFILE

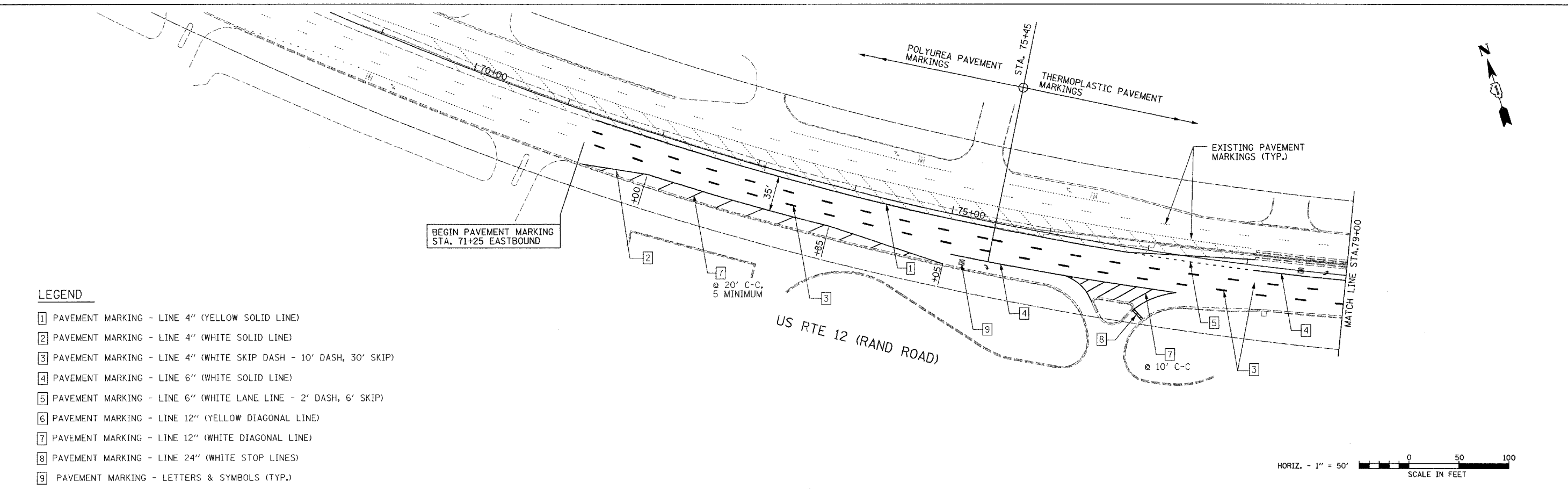
REVISIONS	
NAME	DATE

SCALE: HORIZ.: 1"=20'
 VERT.: 1"=5'
 DATE 3/24/08 DRAWN BY WS
 CHECKED BY RJS

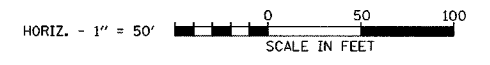
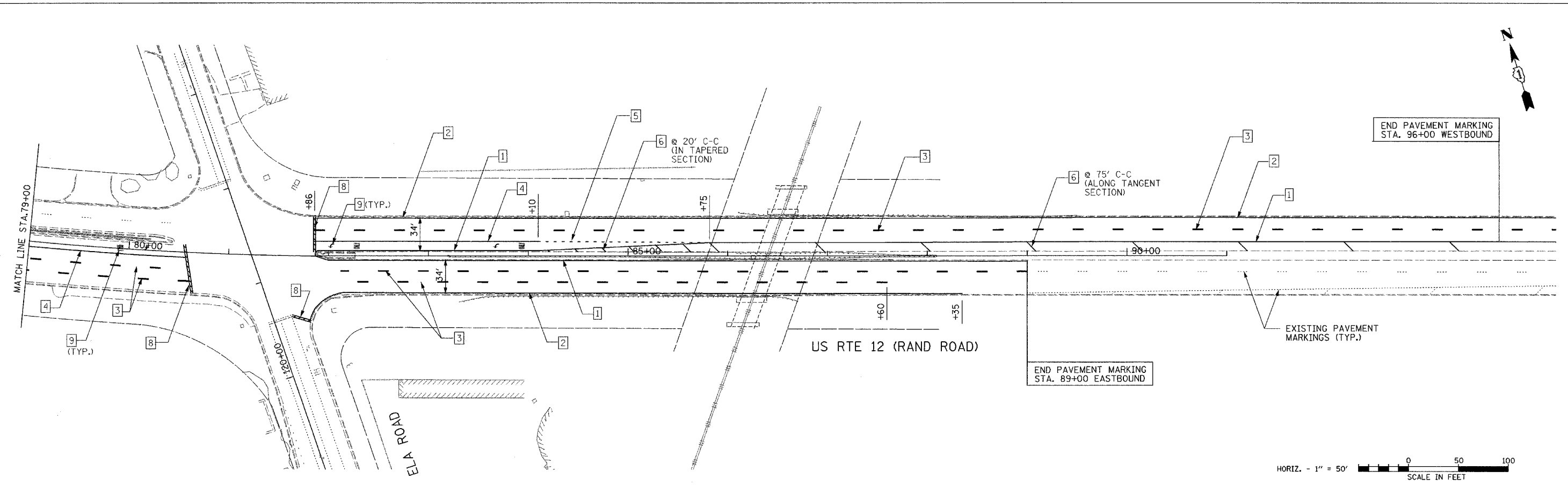
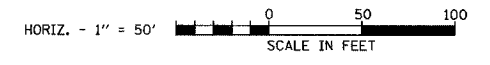
DATE	BY

DATE	BY

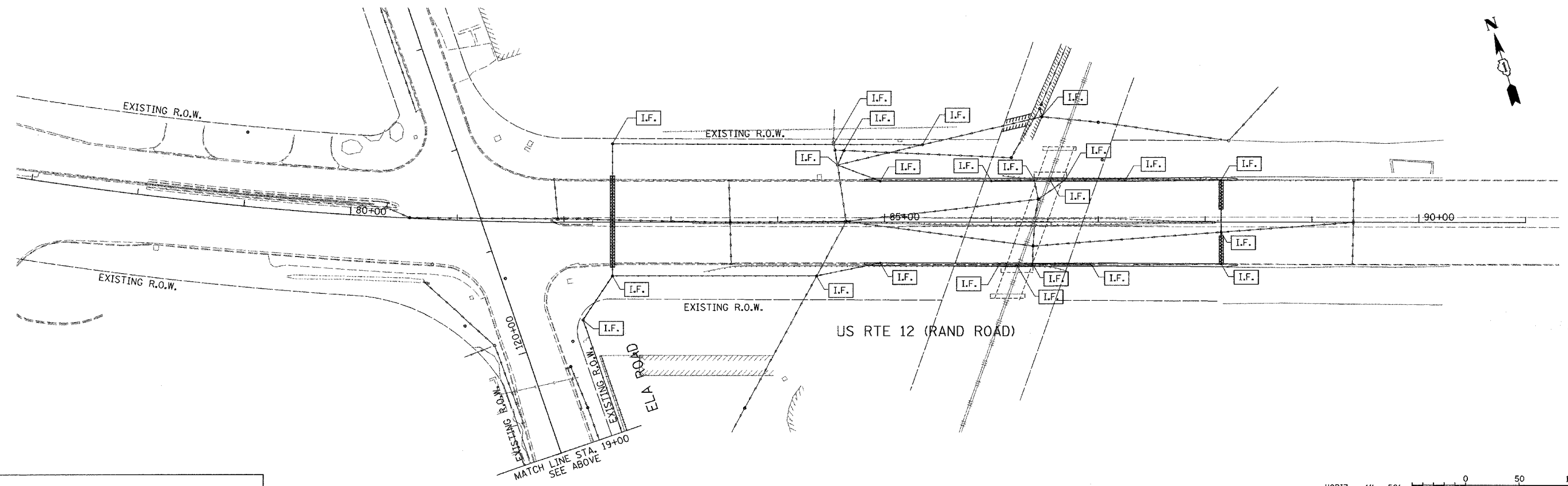
PLOT DATE = 3/25/2008
 FILE NAME = 8FILE18
 PLOT SCALE = 20.00000 / IN.
 USER NAME = USER



- LEGEND**
- 1 PAVEMENT MARKING - LINE 4" (YELLOW SOLID LINE)
 - 2 PAVEMENT MARKING - LINE 4" (WHITE SOLID LINE)
 - 3 PAVEMENT MARKING - LINE 4" (WHITE SKIP DASH - 10' DASH, 30' SKIP)
 - 4 PAVEMENT MARKING - LINE 6" (WHITE SOLID LINE)
 - 5 PAVEMENT MARKING - LINE 6" (WHITE LANE LINE - 2' DASH, 6' SKIP)
 - 6 PAVEMENT MARKING - LINE 12" (YELLOW DIAGONAL LINE)
 - 7 PAVEMENT MARKING - LINE 12" (WHITE DIAGONAL LINE)
 - 8 PAVEMENT MARKING - LINE 24" (WHITE STOP LINES)
 - 9 PAVEMENT MARKING - LETTERS & SYMBOLS (TYP.)



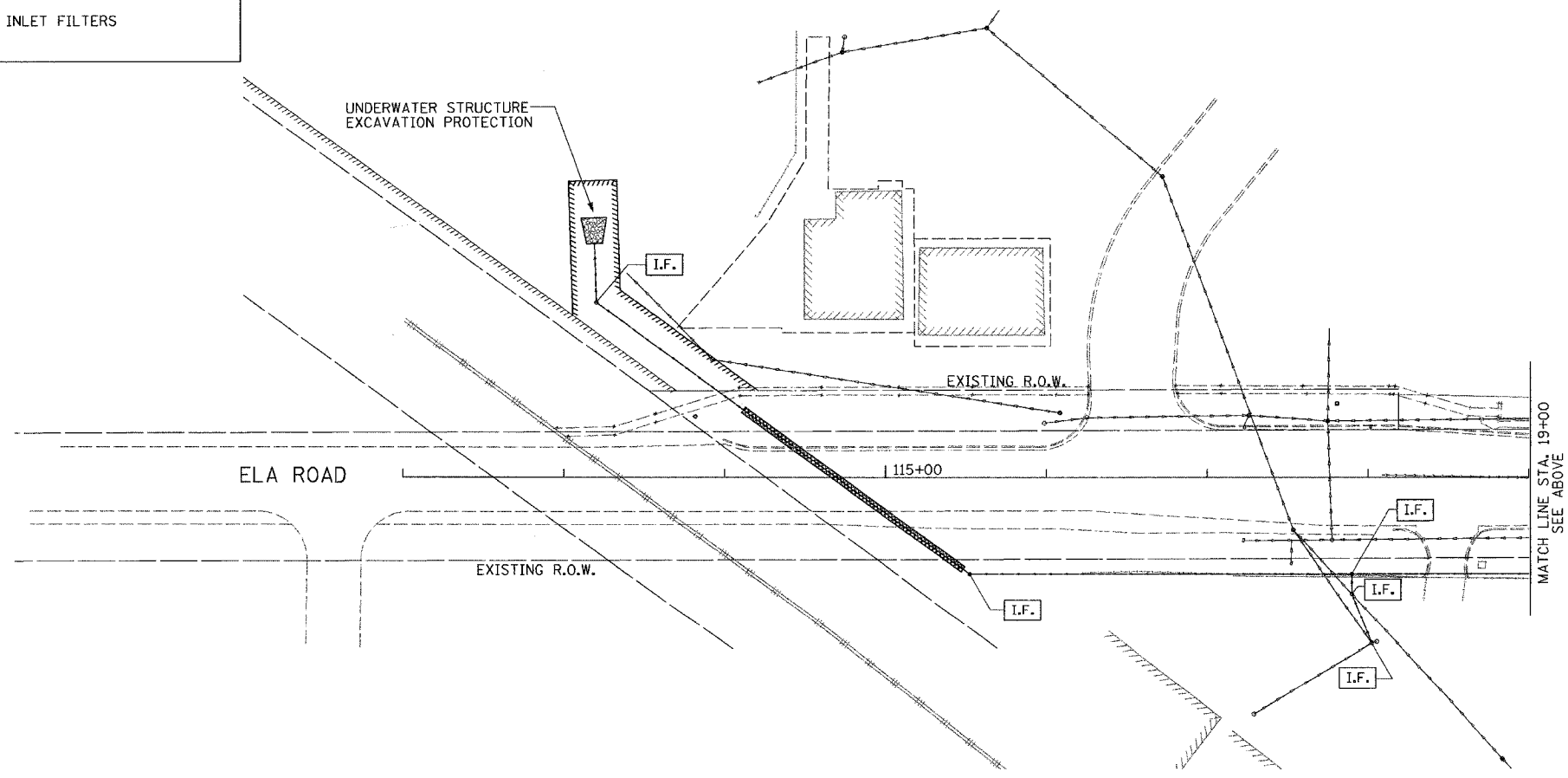
FILE NAME =	USER NAME = .USER.	DESIGNED - WS	REVISED -	STATE OF ILLINOIS DEPARTMENT OF TRANSPORTATION	PAVEMENT MARKING PLAN			F.A. RTE.	SECTION	COUNTY	TOTAL SHEETS	SHEET NO.
#FILE#		DRAWN - WS	REVISED -					334	SY-1-T-1	LAKE	19	12
	PLOT SCALE = 50.0000' / IN.	CHECKED - RJS	REVISED -					CONTRACT NO. 60C12				
	PLOT DATE = 3/26/2008	DATE - 3/24/08	REVISED -					ILLINOIS FED. AID PROJECT				
				SCALE: 50'	SHEET NO.	OF	SHEETS	STA.	TO STA.			



HORIZ. - 1" = 50' SCALE IN FEET

EROSION CONTROL LEGEND

I.F. INLET FILTERS



HORIZ. - 1" = 50' SCALE IN FEET

P:\Jobs\2006\20060308-27\CAD\DOT-Trans\dm\00\ER\erplan_v8.dgn
 5/25/2008 4:33:42 PM

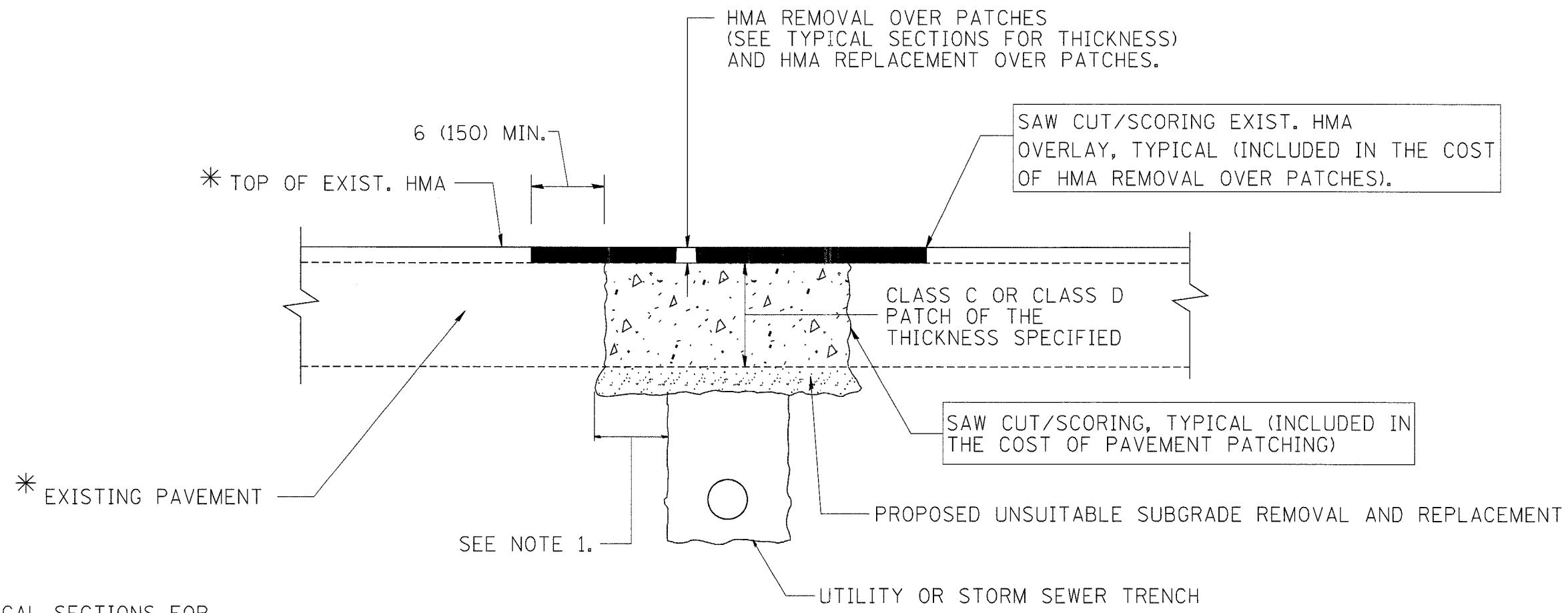
FILE NAME =	USER NAME = .USER.	DESIGNED - WS	REVISED -
#FILE#		DRAWN - WS	REVISED -
	PLOT SCALE = 50,0000' / IN.	CHECKED - RJS	REVISED -
	PLOT DATE = 3/25/2008	DATE - 3/24/08	REVISED -

**STATE OF ILLINOIS
DEPARTMENT OF TRANSPORTATION**

EROSION CONTROL PLAN

SCALE: 50' SHEET NO. OF SHEETS STA. TO STA.

F.A. RTE.	SECTION	COUNTY	TOTAL SHEETS	SHEET NO.
334	SY-1-T-1	LAKE	19	13
CONTRACT NO. 60C12				
FED. ROAD DIST. NO. [ILLINOIS] FED. AID PROJECT				



* SEE TYPICAL SECTIONS FOR THICKNESS AND MATERIALS

NOTES:

1. THE WIDTH OF THE FULL DEPTH PATCH OVER A TRENCH SHALL BE 12 (300) WIDER ON EACH SIDE OF THE TRENCH.
2. FOR METHOD OF MEASUREMENT AND BASIS OF PAYMENT, SEE RECURRING SPECIAL PROVISION "PATCHING WITH HOT-MIX ASPHALT OVERLAY REMOVAL".

SEQUENCE OF CONSTRUCTION

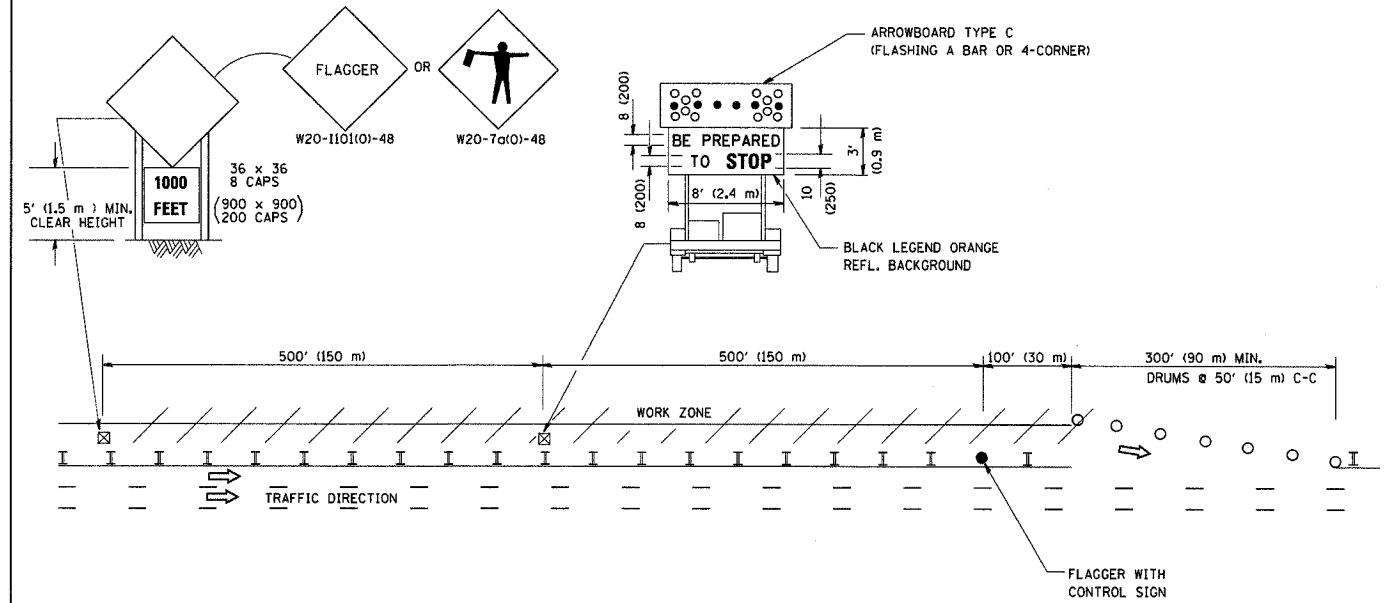
1. REMOVE THE EXISTING HMA MATERIAL OVER THE AREA TO BE PATCHED.
2. REMOVE AND REPLACE FULL DEPTH PATCHES
3. REPLACE HMA MATERIAL OVER THE AREA TO BE PATCHED.

ALL DIMENSIONS ARE IN INCHES (MILLIMETERS) UNLESS OTHERWISE SHOWN.

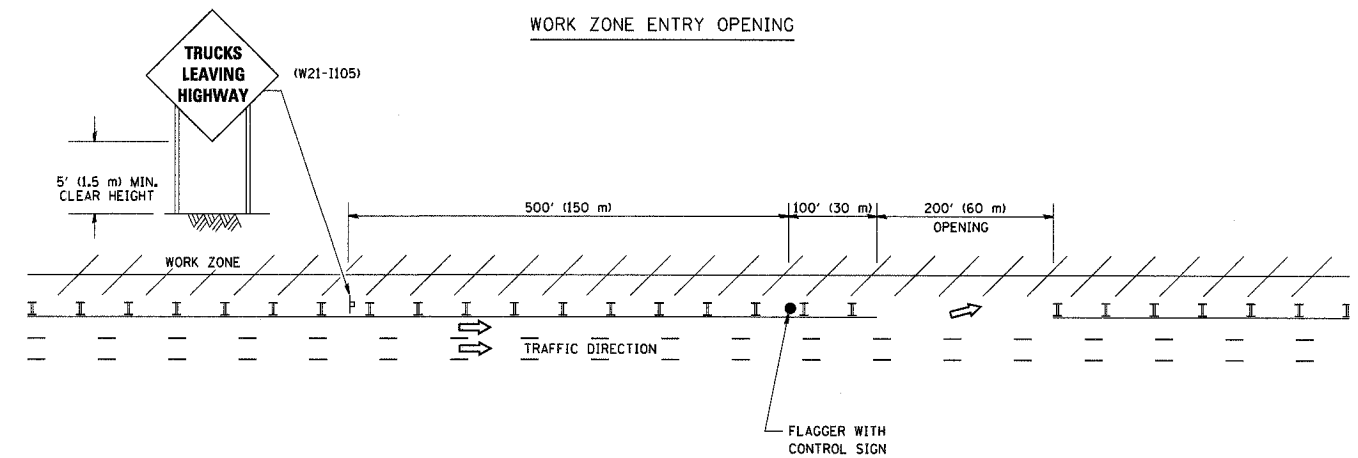
FILE NAME = W:\dststd\22x34\bd22.dgn	USER NAME = geglianobb	DESIGNED - R. SHAH	REVISED - A. ABBAS 01-20-98	STATE OF ILLINOIS DEPARTMENT OF TRANSPORTATION	PAVEMENT PATCHING FOR HMA SURFACED PAVEMENT		F.A. RTE.	SECTION	COUNTY	TOTAL SHEETS	SHEET NO.
	PLOT SCALE = 50.000' / IN.	CHECKED -	REVISED - R. BORO 01-01-07				BD400-04 (BD-22)		CONTRACT NO. 60C12		
	PLOT DATE = 1/4/2008	DATE - 10-25-94	REVISED - R. BORO 09-04-07				SCALE: NONE	SHEET NO. 1 OF 1 SHEETS	STA. TO STA.	FED. ROAD DIST. NO. 1 ILLINOIS FED. AID PROJECT	

SIGNING FOR FLAGGING OPERATIONS AT WORK ZONE OPENINGS

WORK ZONE EXIT OPENING



WORK ZONE ENTRY OPENING



NOTES:

1. The Arrowboard, the Flagger Ahead trailer mounted sign, and the Trucks Leaving Highway sign shall be removed or turned away from traffic and the exit and entry openings shall be closed when the flagging operation ceases.
2. Work Zone Exit Openings should be a minimum of one half mile apart.
3. Exiting the work zone at any place other than at a Work Zone Exit Opening will be prohibited.
4. All vehicles shall enter the work zone at entry openings, using their turn signals to warn motorists

ALL DIMENSIONS ARE IN INCHES (MILLIMETERS) UNLESS OTHERWISE SHOWN

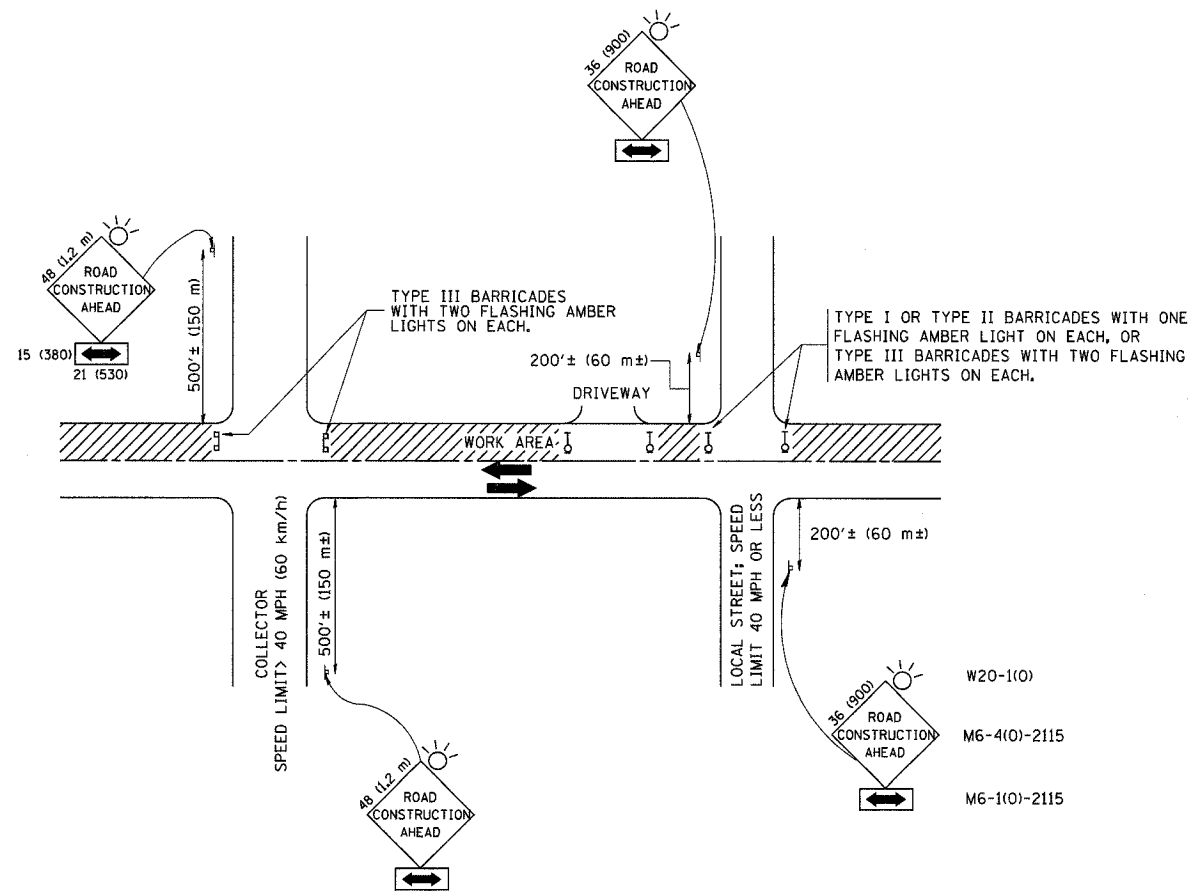
FILE NAME = M:\diststd\22x34\ts18.dgn	USER NAME = geglanoht	DESIGNED -	REVISED - D.W.S. 08-98
		DRAWN -	REVISED - J.A.F. 04-03
	PLOT SCALE = 50,000 1 / IN.	CHECKED -	REVISED - J.A.F. 02-06
	PLOT DATE = 1/4/2008	DATE -	REVISED - S.P.B. 01-07

STATE OF ILLINOIS
DEPARTMENT OF TRANSPORTATION

SIGNING FOR FLAGGING OPERATIONS
AT WORK ZONE OPENINGS

SCALE: NONE SHEET NO. 1 OF 1 SHEETS STA. TO STA.

F.A. RTE.	SECTION	COUNTY	TOTAL SHEETS	SHEET NO.
	TC-18		19	15
FED. ROAD DIST. NO. 1 ILLINOIS FED. AID PROJECT			CONTRACT NO. 60C12	



TRAFFIC CONTROL AND PROTECTION FOR SIDE ROADS, INTERSECTIONS, AND DRIVEWAYS

NOTES:

- A. FOR NO LANE RESTRICTION ON THE SIDE ROAD OR DRIVEWAYS
- SIDE ROAD WITH A SPEED LIMIT OF 40 MPH (60 km/h) OR LESS AS SHOWN ON THE DRAWING AND AS DIRECTED BY THE ENGINEER:
 - ONE ROAD CONSTRUCTION AHEAD SIGN 36 x 36 (900x900) WITH A FLASHER AND FLAG MOUNTED ON IT APPROXIMATELY 200' (60 m) IN ADVANCE OF THE MAIN ROUTE.
 - THE CLOSED PORTION OF THE MAIN ROUTE SHALL BE PROTECTED BY BLOCKING WITH TYPE I, TYPE II OR TYPE III BARRICADES, 1/3 OF THE CROSS SECTION OF THE CLOSED PORTION.
 - SIDE ROAD WITH A SPEED LIMIT GREATER THAN 40 MPH (60 km/h) AS SHOWN ON THE DRAWING AND AS DIRECTED BY THE ENGINEER:
 - ONE ROAD CONSTRUCTION AHEAD SIGN 48 x 48 (1.2 m x 1.2 m) WITH A FLASHER MOUNTED ON IT APPROXIMATELY 500' (150 m) IN ADVANCE OF THE MAIN ROUTE.
 - THE CLOSED PORTION OF THE MAIN ROUTE SHALL BE PROTECTED BY BLOCKING WITH TYPE III BARRICADES, 1/2 OF THE CROSS SECTION OF THE CLOSED PORTION.
3. WHEN THE SIDE ROAD LIES BETWEEN THE BEGINNING OF THE MAINLINE SIGNING AND THE WORK ZONE, A SINGLE HEADED ARROW (M6-1) SHALL BE USED IN LIEU OF THE DOUBLE HEADED ARROW (M6-4).
- B. FOR A LANE CLOSURE ON A SIDE ROAD OR DRIVEWAY:
- USE APPLICABLE PORTIONS OF THE TYPICAL APPLICATION OF TRAFFIC CONTROL DEVICES (STD. 701501, STD. 701606 OR THE APPROPRIATE STANDARD). THE SPACING OF SIGNS AND BARRICADES SHALL BE ADJUSTED FOR FIELD CONDITIONS AS DIRECTED BY THE ENGINEER. THE DIRECTIONAL ARROW SHALL BE COVERED OR REMOVED WHEN NO LONGER CONSISTENT WITH THE SIDE ROAD LANE CLOSURE.
- C. ADVANCE WARNING SIGNS ARE TO BE OMITTED ON DRIVEWAY UNLESS OTHERWISE NOTED.
- D. THE TRAFFIC CONTROL AND PROTECTION FOR SIDE ROADS, INTERSECTIONS, AND DRIVEWAYS SHALL BE INCIDENTAL TO THE COST OF SPECIFIED TRAFFIC CONTROL STANDARDS OR ITEMS.

All dimensions are in millimeters (inches) unless otherwise shown.

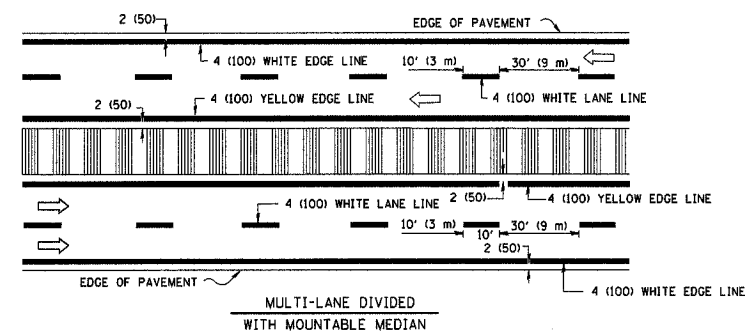
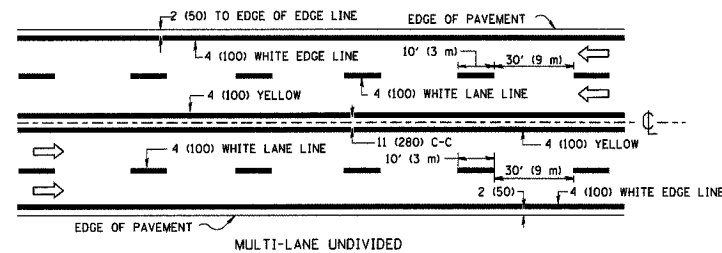
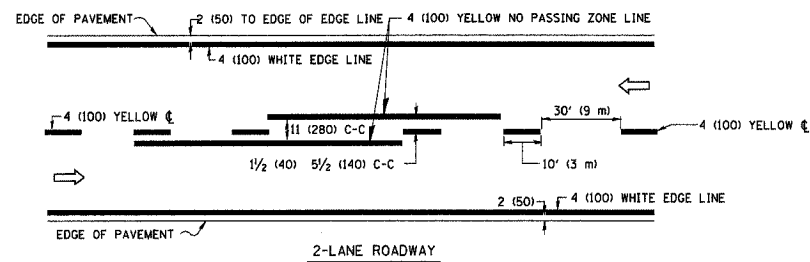
FILE NAME = W:\distatd\22x34\1010.dgn	USER NAME = gaglianobt	DESIGNED - LHA	REVISED - J. OBERLE 10-18-95
		DRAWN -	REVISED - A. HOUSEH 03-06-96
	PLOT SCALE = 56,000' / IN.	CHECKED -	REVISED - A. HOUSEH 10-15-96
	PLOT DATE = 1/4/2008	DATE - 06-89	REVISED - T. RAMMACHER 01-06-00

STATE OF ILLINOIS
DEPARTMENT OF TRANSPORTATION

TRAFFIC CONTROL AND PROTECTION FOR
SIDE ROADS, INTERSECTIONS, AND DRIVEWAYS

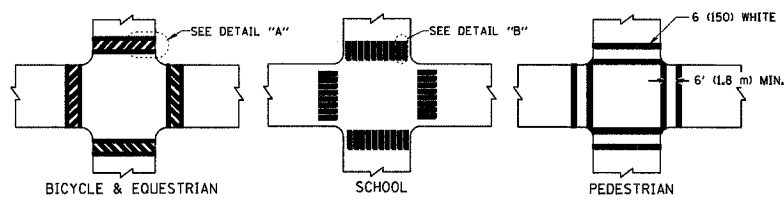
SCALE: NONE SHEET NO. 1 OF 1 SHEETS STA. TO STA.

F.A. RTE.	SECTION	COUNTY	TOTAL SHEETS	SHEET NO.
			19	16
TC-10		CONTRACT NO. 60C-12		
FED. ROAD DIST. NO. 1 ILLINOIS FED. AID PROJECT				

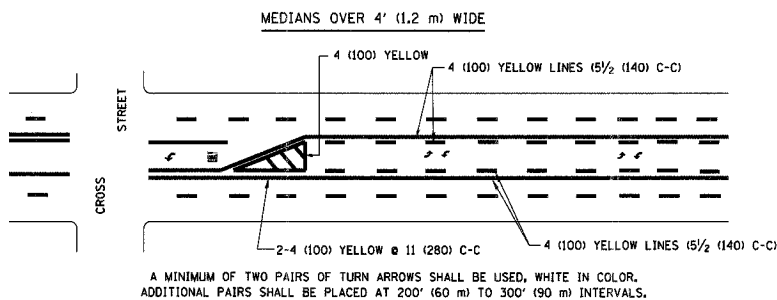
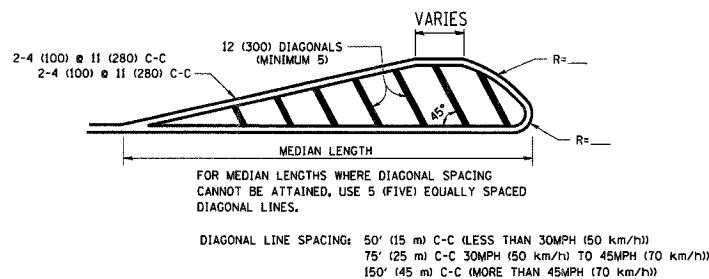
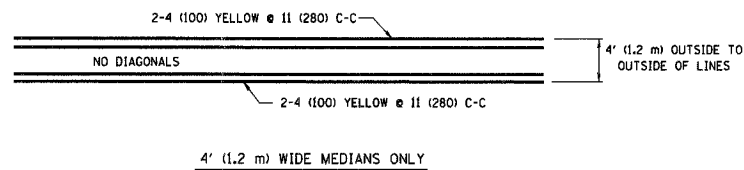


NOTE: MEDIANS WITH BARRIER CURB DO NOT REQUIRE AN EDGE LINE

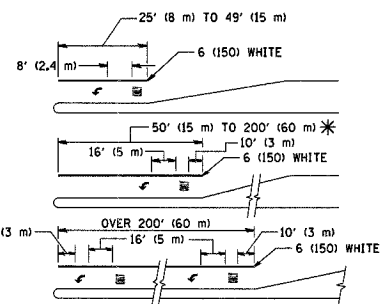
TYPICAL LANE AND EDGE LINE MARKING



TYPICAL CROSSWALK MARKING

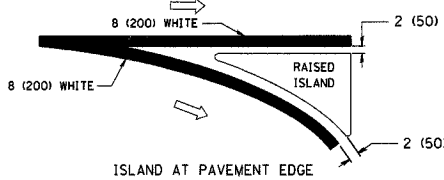
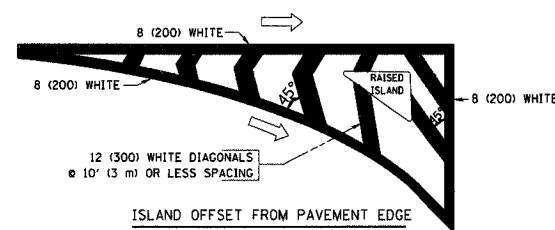


TYPICAL PAINTED MEDIAN MARKING



FULL SIZE LETTERS 8' (2.4 m) AND ARROWS SHALL BE USED.
 AREA = 15.6 SQ. FT. (1.5 m²) AREA = 20.8 SQ. FT. (1.9 m²)
 * TURN LANES IN EXCESS OF 400' (120 m) IN LENGTH MAY HAVE AN ADDITIONAL SET OF ARROW - "ONLY" INSTALLED MIDWAY BETWEEN THE OTHER TWO SETS OF ARROW - "ONLY".

TYPICAL TURN LANE MARKING



TYPICAL ISLAND MARKING

TYPE OF MARKING	WIDTH OF LINE	PATTERN	COLOR	SPACING / REMARKS
CENTERLINE ON 2 LANE PAVEMENT	4 (100)	SKIP-DASH	YELLOW	10' (3 m) LINE WITH 30' (9 m) SPACE
CENTERLINE ON MULTI-LANE UNDIVIDED PAVEMENT	2 @ 4 (100)	SOLID	YELLOW	11 (280) C-C
NO PASSING ZONE LINES FOR ONE DIRECTION FOR BOTH DIRECTIONS	4 (100) 2 @ 4 (100)	SOLID SOLID	YELLOW YELLOW	5/2 (140) C-C FROM SKIP-DASH CENTERLINE 11 (280) C-C OMIT SKIP-DASH CENTERLINE BETWEEN
LANE LINES	4 (100) 5 (125) ON FREEWAYS	SKIP-DASH SKIP-DASH	WHITE WHITE	10' (3 m) LINE WITH 30' (9 m) SPACE
DOTTED LINES (EXTENSIONS OF CENTER, LANE OR TURN LANE MARKINGS)	SAME AS LINE BEING EXTENDED	SKIP-DASH	SAME AS LINE BEING EXTENDED	2' (600) LINE WITH 6' (1.8 m) SPACE
EDGE LINES	4 (100)	SOLID	YELLOW-LEFT WHITE-RIGHT	OUTLINE MOUNTABLE MEDIANS IN YELLOW. EDGE LINES ARE NOT USED NEXT TO BARRIER CURB
TURN LANE MARKINGS	6 (150) LINE; FULL SIZE LETTERS & SYMBOLS (8' (2.4m))	SOLID	WHITE	SEE TYPICAL TURN LANE MARKING DETAIL
TWO WAY LEFT TURN MARKING	2 @ 4 (100) EACH DIRECTION 8' (2.4m) LEFT ARROW	SKIP-DASH AND SOLID IN PAIRS	YELLOW WHITE	10' (3 m) LINE WITH 30' (9 m) SPACE FOR SKIP-DASH; 5/2 (140) C-C BETWEEN SOLID LINE AND SKIP-DASH LINE SEE TYPICAL TWO-WAY LEFT TURN MARKING DETAIL
CROSSWALK LINES (PEDESTRIAN) A. DIAGONALS (BIKE & EQUESTRIAN) B. LONGITUDINAL BARS (SCHOOL)	2 @ 6 (150) 12 (300) @ 45° 12 (300) @ 90°	SOLID SOLID SOLID	WHITE WHITE WHITE	NOT LESS THAN 6' (1.8 m) APART 2' (600) APART 2' (600) APART SEE TYPICAL CROSSWALK MARKING DETAILS.
STOP LINES	24 (600)	SOLID	WHITE	PLACE 4' (1.2 m) IN ADVANCE OF AND PARALLEL TO CROSSWALK, IF PRESENT. OTHERWISE, PLACE AT DESIRED STOPPING POINT, PARALLEL TO CROSSROAD CENTERLINE, WHERE POSSIBLE
PAINTED MEDIANS	2 @ 4 (100) WITH 12 (300) DIAGONALS @ 45° NO DIAGONALS USED FOR 4' (1.2 m) WIDE MEDIANS	SOLID	YELLOW; TWO WAY TRAFFIC WHITE; ONE WAY TRAFFIC	11 (280) C-C FOR THE DOUBLE LINE SEE TYPICAL PAINTED MEDIAN MARKING.
GORE MARKING AND CHANNELIZING LINES	8 (200) WITH 12 (300) DIAGONALS @ 45°	SOLID	WHITE	DIAGONALS: 15' (4.5 m) C-C (LESS THAN 30MPH (50 km/h)) 20' (6 m) C-C (30MPH (50 km/h) TO 45MPH (70 km/h)) 30' (9 m) C-C (OVER 45MPH (70 km/h))
RAILROAD CROSSING	24 (600) TRANSVERSE LINES; "RR" IS 6' (1.8 m) LETTERS; 16 (400) LINE FOR "X"	SOLID	WHITE	SEE STATE STANDARD 780001 AREA OF: "R"=3.6 SQ. FT. (0.33 m ²) EACH "X"=54.0 SQ. FT. (5.0 m ²)
SHOULDER DIAGONALS	12 (300) @ 45°	SOLID	WHITE - RIGHT YELLOW - LEFT	50' (15 m) C-C (LESS THAN 30MPH (50 km/h)) 75' (25 m) C-C (30 MPH (50 km/h) TO 45MPH (70 km/h)) 150' (45 m) C-C (OVER 45MPH (70 km/h))

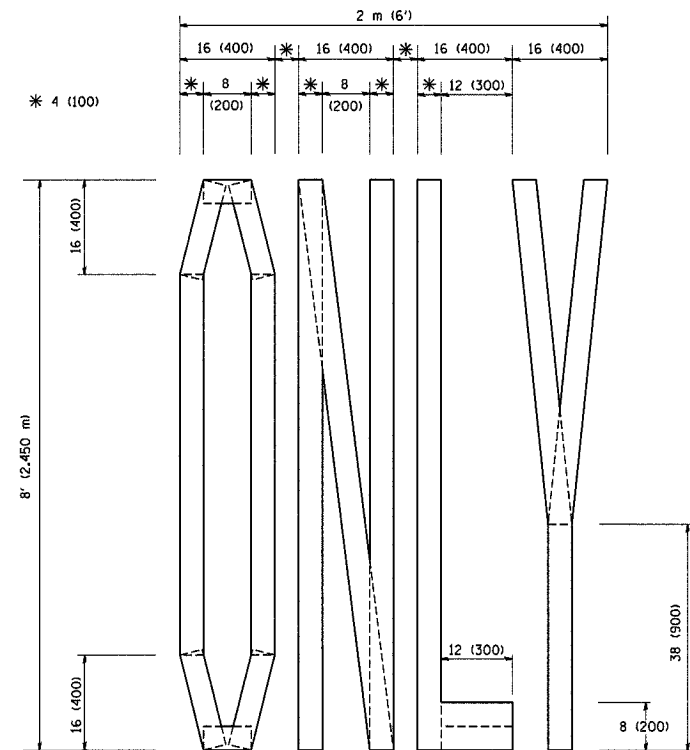
FOR FURTHER DETAILS ON PAVEMENT MARKING REFER TO STANDARD SPECIFICATIONS FOR ROAD AND BRIDGE CONSTRUCTION AND STATE STANDARD 780001.

All dimensions are in inches (millimeters) unless otherwise shown.

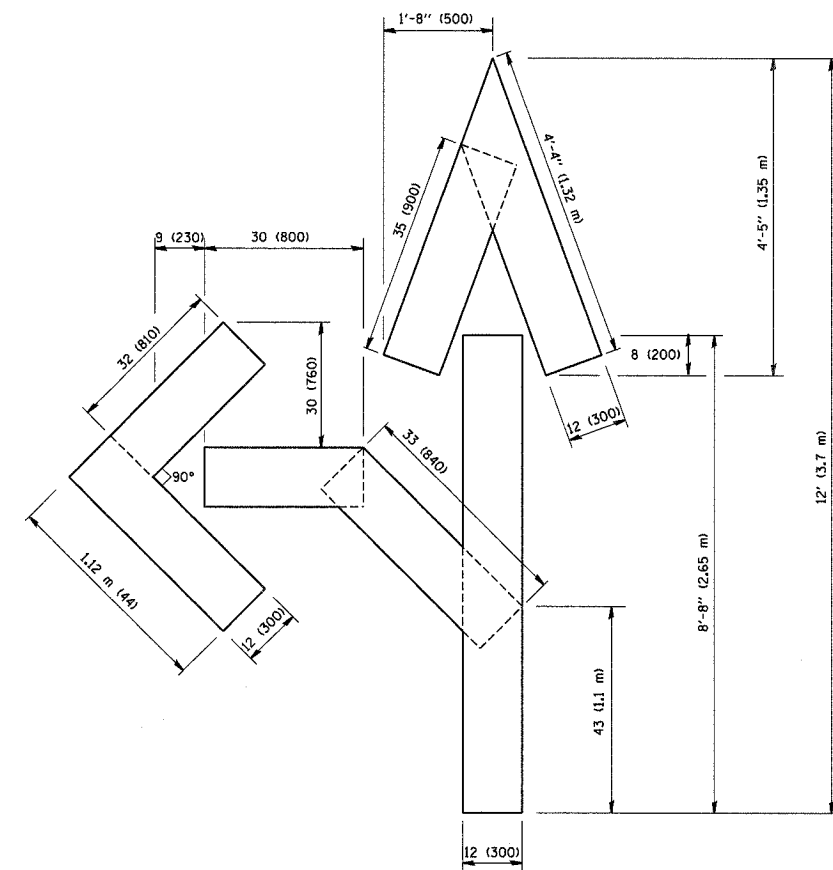
FILE NAME = W:\d\state\22x34\vol13.dgn	USER NAME = gaglionobt	DESIGNED - EVERS	REVISED - T. RAMMACHER 10-27-94
		DRAWN - A. HOUSEH 10-09-96	REVISED - A. HOUSEH 10-09-96
	PLOT SCALE = 50,000' / IN.	CHECKED - A. HOUSEH 10-17-96	REVISED - A. HOUSEH 10-17-96
	PLOT DATE = 1/4/2008	DATE - 03-19-90	REVISED - T. RAMMACHER 01-06-00

STATE OF ILLINOIS
DEPARTMENT OF TRANSPORTATION

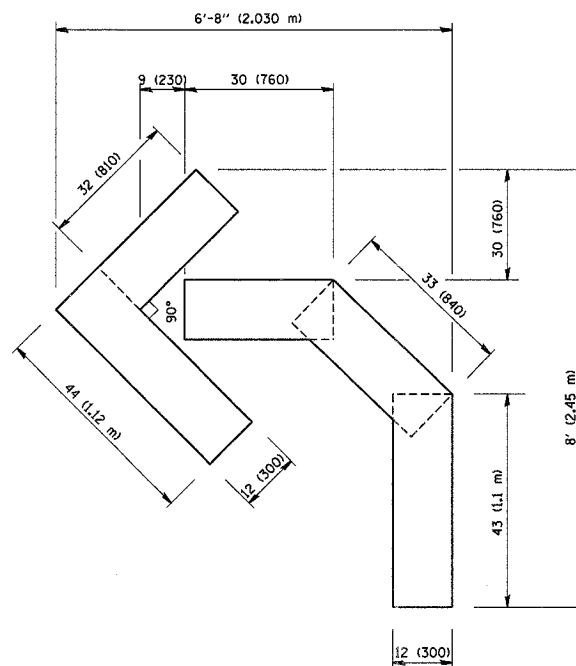
DISTRICT ONE		F.A. RTE.	SECTION	COUNTY	TOTAL SHEETS	SHEET NO.
TYPICAL PAVEMENT MARKINGS					19	17
SCALE: NONE		TC-13		CONTRACT NO. 60C12		
SHEET NO. 1 OF 1 SHEETS		STA. TO STA.		FED. ROAD DIST. NO. 1 (ILLINOIS) FED. AID PROJECT		



QUANTITY
 4 (100) LINE = 64.1 ft. (19.7 m)
 21.1 sq. ft. (1.97 sq. m)



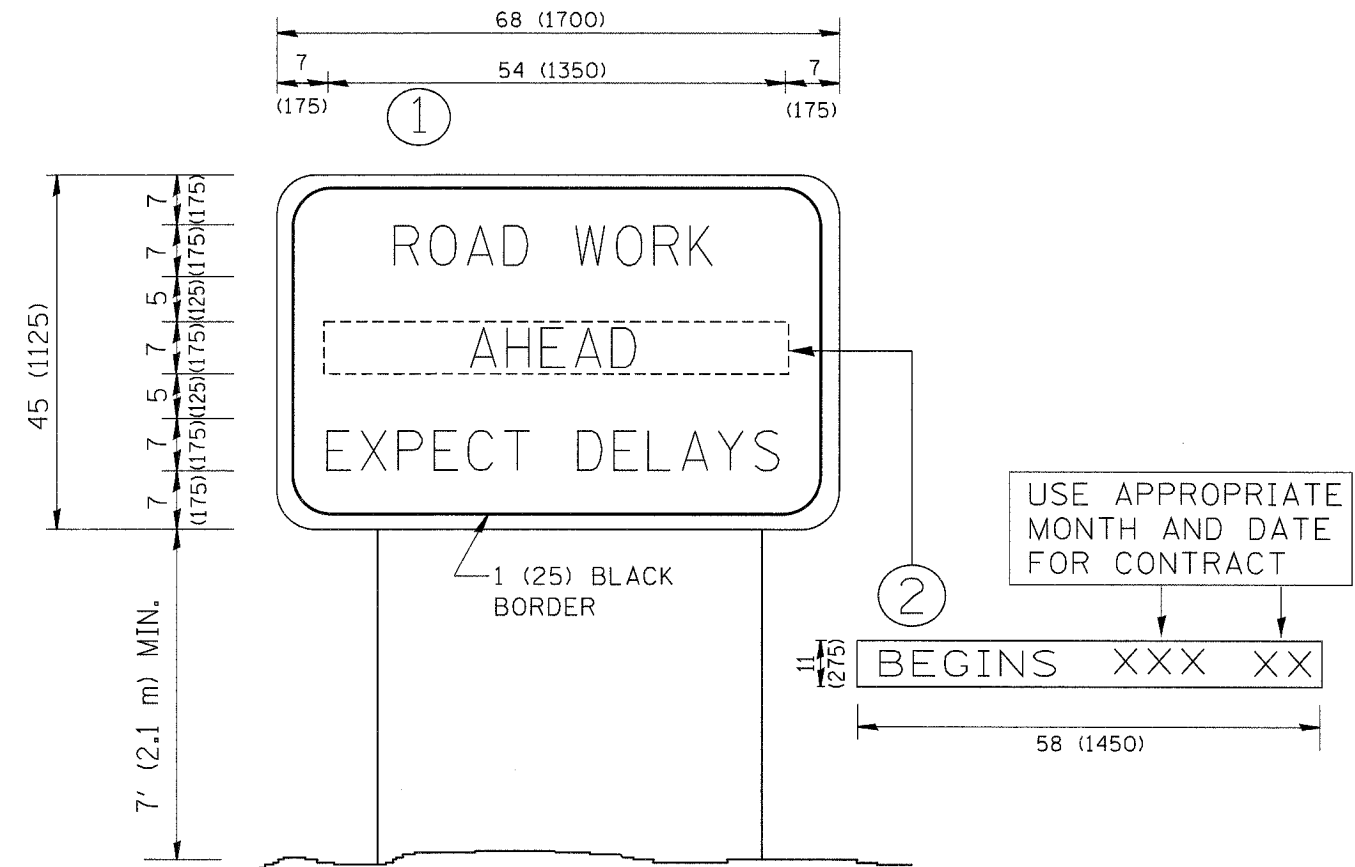
QUANTITY
 4 (100) LINE = 82.5 ft. (25.3 m)
 27.5 sq. ft. (2.53 sq. m)



QUANTITY
 4 (100) LINE = 45.5 ft. (13.9 m)
 15.2 sq. ft. (1.39 sq. m)

All dimensions are in inches (millimeters) unless otherwise shown.

FILE NAME = W:\dstata\22x34\to16.dgn	USER NAME = geglianobt	DESIGNED - DRAWN -	REVISOR - T. RAMMACHER 06-05-96 REVISOR - T. RAMMACHER 11-04-97	STATE OF ILLINOIS DEPARTMENT OF TRANSPORTATION	PAVEMENT MARKING LETTERS AND SYMBOLS FOR TRAFFIC STAGING			F.A. RTE.	SECTION	COUNTY	TOTAL SHEETS	SHEET NO.	
	PLOT SCALE = 5/8" = 1' IN.	CHECKED -	REVISOR - T. RAMMACHER 03-02-98		SCALE: NONE	SHEET NO. 1 OF 1 SHEETS	STA.	TO STA.	TC-16			19	18
	PLOT DATE = 1/4/2008	DATE = 09-18-94	REVISOR - E. GOMEZ 08-28-00						FED. ROAD DIST. NO. 1	ILLINOIS FED. AID PROJECT			60c12



NOTES:

1. USE BLACK LETTERING ON ORANGE BACKGROUND.
2. ERECT SIGNS IN ADVANCE OF THE LOCATION FOR THE "ROAD CONSTRUCTION AHEAD" SIGN AT LOCATIONS AS DIRECTED BY THE ENGINEER.
3. ERECT SIGN ① WITH INSTALLED PANEL ② ONE WEEK PRIOR TO THE START OF CONSTRUCTION.
4. REMOVE PANEL ② SOON AFTER THE START OF CONSTRUCTION.
5. SEE SPECIAL PROVISION FOR "TEMPORARY INFORMATION SIGNING" FOR ADDITIONAL INFORMATION.
6. ONE SIGN ASSEMBLY EQUALS 25.70 SQ. FT. (2.3 SQ. M.)
7. SHALL BE PAID FOR AS TEMPORARY INFORMATION SIGNING.

ALL DIMENSIONS ARE IN INCHES (MILLIMETERS) UNLESS OTHERWISE SHOWN.

FILE NAME = W:\distsd\22x34\to22.dgn	USER NAME = gaglianob	DESIGNED -	REVISED - R. MIRS 09-15-97
		DRAWN -	REVISED - R. MIRS 12-11-97
	PLOT SCALE = 50,000' / IN.	CHECKED -	REVISED - T. RAMMACHER 02-02-99
	PLOT DATE = 1/4/2008	DATE -	REVISED - C. JUCIUS 01-31-07

**STATE OF ILLINOIS
DEPARTMENT OF TRANSPORTATION**

ARTERIAL ROAD INFORMATION SIGN	
SCALE: NONE	SHEET NO. 1 OF 1 SHEETS
STA.	TO STA.

F.A. RTE.	SECTION	COUNTY	TOTAL SHEETS	SHEET NO.
			19	19
TC-22		CONTRACT NO. 60C12		
FED. ROAD DIST. NO. 1 (ILLINOIS) FED. AID PROJECT				