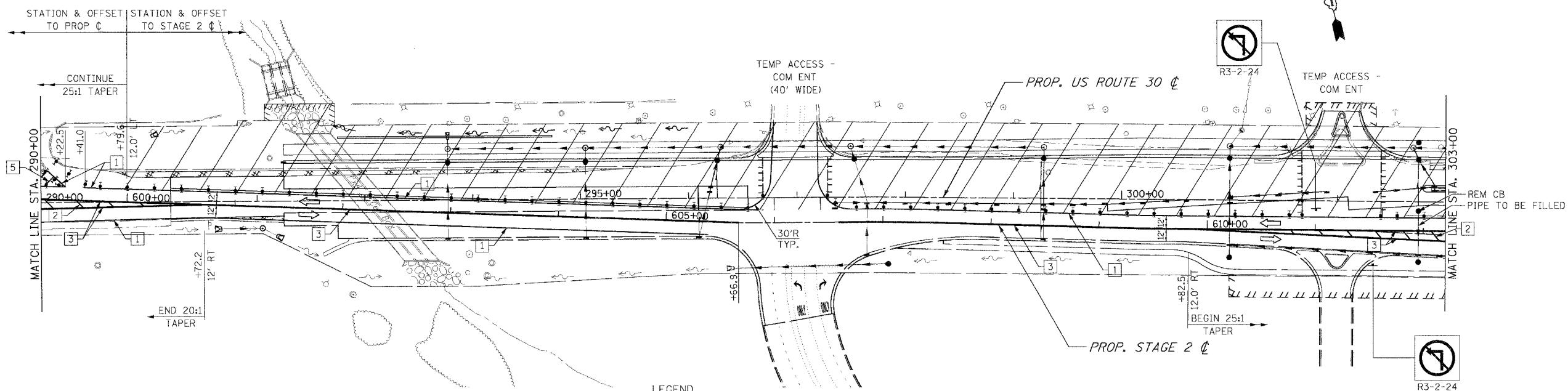
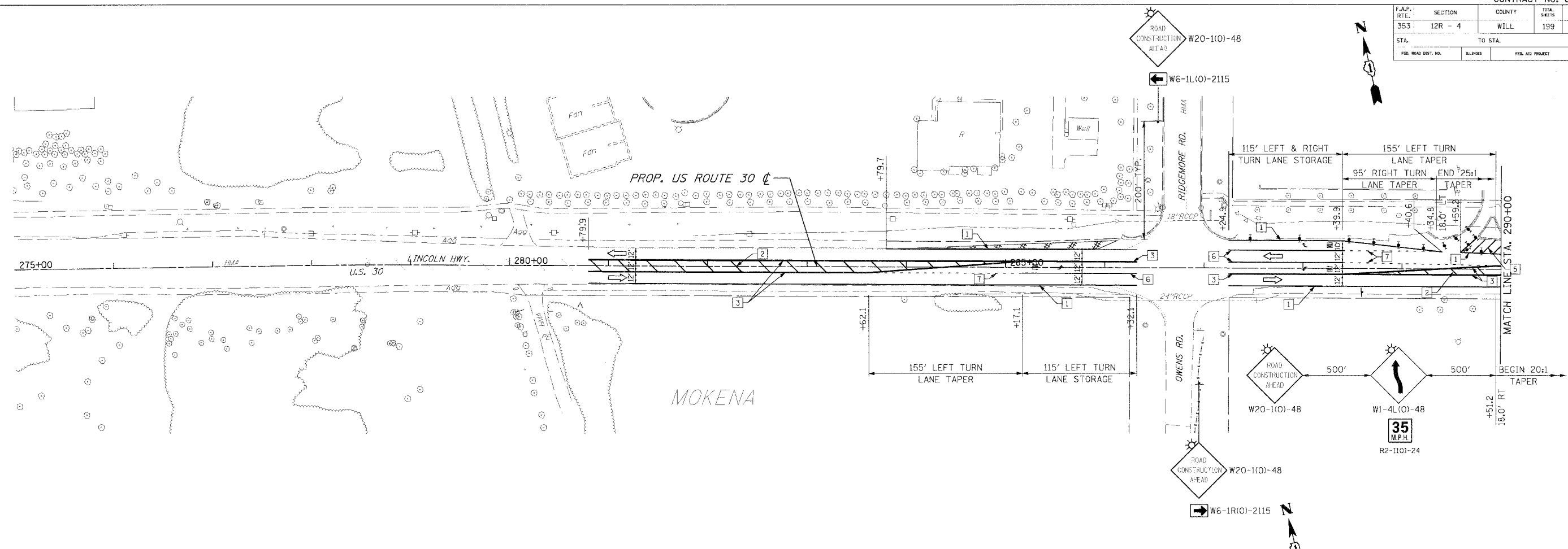


F.A.P. RTE.	SECTION	COUNTY	TOTAL SHEETS	SHEET NO.
353	12R - 4	WILL	199	48
STA.	TO STA.			
FED. ROAD DIST. NO.	LENGTH	FED. AID PROJECT		



PAVEMENT MARKING KEY

1	4" SOLID - WHITE
2	12" SOLID - YELLOW @ 20' C-C (5 MIN.)
3	4" SOLID - YELLOW @ 11" C-C
4	24" STOP BAR - WHITE
5	12" SOLID - WHITE
6	6" SOLID - WHITE
7	4" SOLID - WHITE (2' DASH - 6' SKIP)

LEGEND

[Symbol]	TEMPORARY PAVEMENT
[Symbol]	TEMPORARY PAVEMENT CONSTRUCTED IN PRE-STAGE1
[Symbol]	TEMPORARY PAVEMENT CONSTRUCTED IN STAGE1
[Symbol]	CONSTRUCTION ZONE
[Symbol]	TYPE II BARRICADE, DRUM OR VERTICAL BARRICADE WITH STEADY BURN MONODIRECTIONAL LIGHT
[Symbol]	50' C-C ON TANGENT
[Symbol]	25' C-C ON TAPER
[Symbol]	10' C-C ON CURVES

[Symbol]	DIRECTION OF TRAFFIC FLOW
[Symbol]	SIGN
[Symbol]	TYPE III BARRICADE WITH FLASHING LIGHTS
[Symbol]	TEMPORARY STRUCTURE NUMBER
[Symbol]	TEMPORARY PIPE NUMBER

REVISIONS

NAME	DATE

ILLINOIS DEPARTMENT OF TRANSPORTATION

MAINTENANCE OF TRAFFIC

STAGE 2

U.S. RTE. 30 (LINCOLN HIGHWAY)

STA. 275+00 TO STA. 303+00

SCALE : 1" = 50'

DATE : 03/21/2008

DRAWN BY : BAE

CHECKED BY : GB