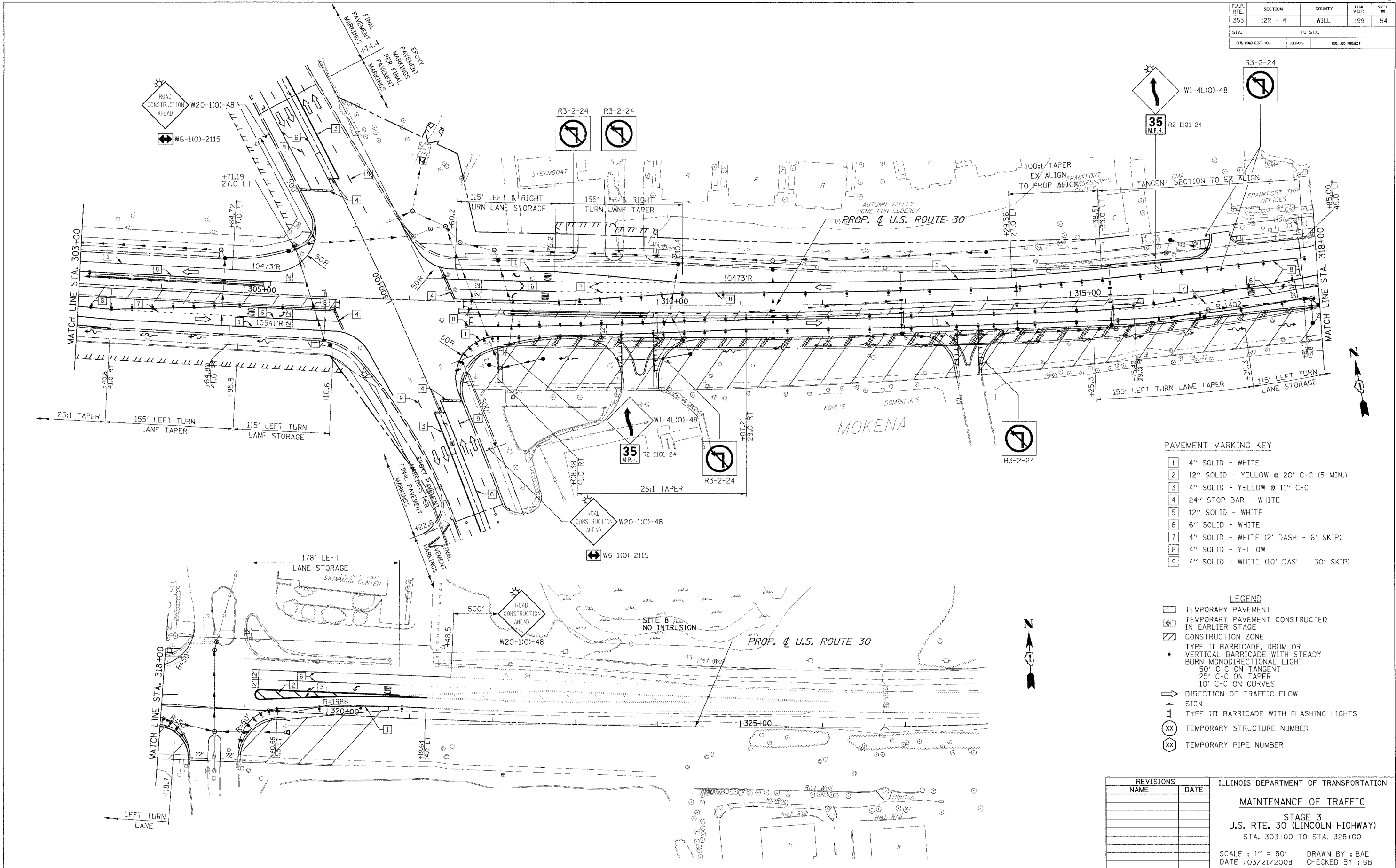


F.A.P. RITE:	SECTION	COUNTY	TOTAL SHEETS	SHEET NO.
353	12R - 4	WILL	199	54
STA. TO STA.		FED. ROAD DIST. NO.		
		FED. AID PROJECT		



- PAVEMENT MARKING KEY**
- 1 4" SOLID - WHITE
 - 2 12" SOLID - YELLOW @ 20' C-C (5 MIN.)
 - 3 4" SOLID - YELLOW @ 11" C-C
 - 4 24" STOP BAR - WHITE
 - 5 12" SOLID - WHITE
 - 6 6" SOLID - WHITE
 - 7 4" SOLID - WHITE (2' DASH - 6' SKIP)
 - 8 4" SOLID - YELLOW
 - 9 4" SOLID - WHITE (10' DASH - 30' SKIP)

- LEGEND**
- [] TEMPORARY PAVEMENT
 - [X] TEMPORARY PAVEMENT CONSTRUCTED IN EARLIER STAGE
 - [Z] CONSTRUCTION ZONE
 - [•] TYPE II BARRICADE, DRUM OR VERTICAL BARRICADE WITH STEADY BURN MONODIRECTIONAL LIGHT
 - 50' C-C ON TANGENT
 - 25' C-C ON TAPER
 - 10' C-C ON CURVES
 - [→] DIRECTION OF TRAFFIC FLOW
 - [+] SIGN
 - [I] TYPE III BARRICADE WITH FLASHING LIGHTS
 - (XX) TEMPORARY STRUCTURE NUMBER
 - (XX) TEMPORARY PIPE NUMBER

REVISIONS		ILLINOIS DEPARTMENT OF TRANSPORTATION
NAME	DATE	
		MAINTENANCE OF TRAFFIC STAGE 3 U.S. RTE. 30 (LINCOLN HIGHWAY) STA. 303+00 TO STA. 328+00 SCALE: 1" = 50' DRAWN BY: BAE DATE: 03/21/2008 CHECKED BY: GB