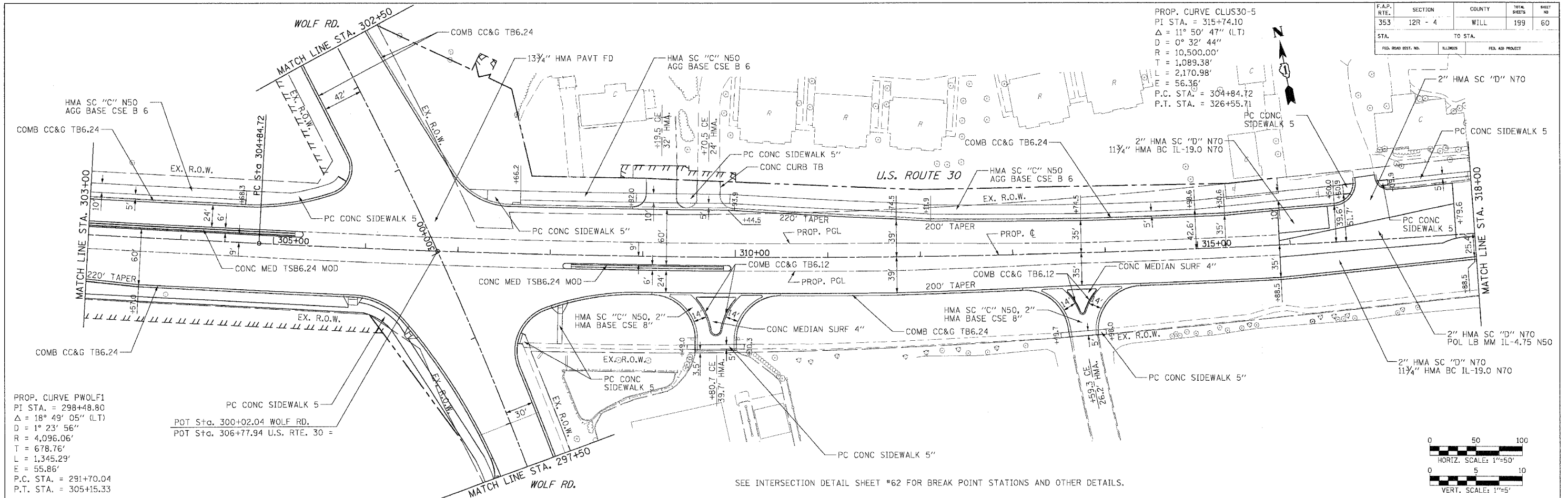


F.A.P. RTE.	SECTION	COUNTY	TOTAL SHEETS	SHEET NO
353	12R - 4	WILL	199	60
STA.	TO STA.			
FIG. ROAD DIST. NO.	KILLING	FED. AID PROJECT		

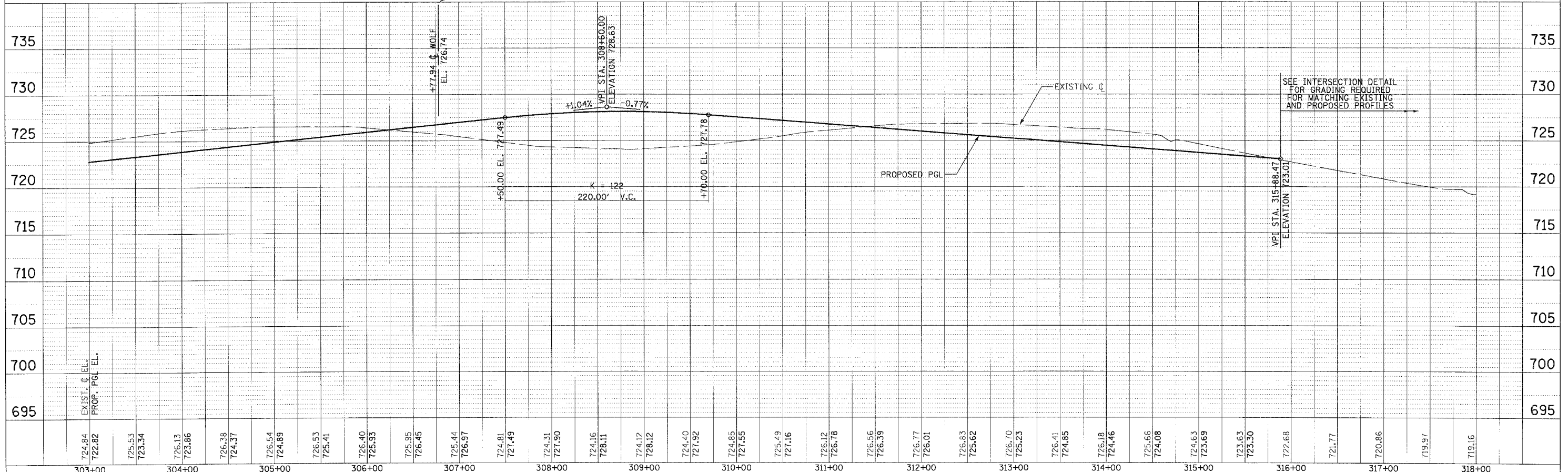
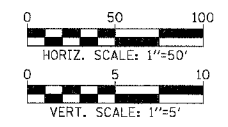
PROP. CURVE CLUS30-5
 PI STA. = 315+74.10
 $\Delta = 11^\circ 50' 47''$ (LT)
 $D = 0^\circ 32' 44''$
 $R = 10,500.00'$
 $T = 1,089.38'$
 $L = 2,170.98'$
 $E = 56.36'$
 P.C. STA. = 304+84.72
 P.T. STA. = 326+55.71



PROP. CURVE PWOLF1
 PI STA. = 298+48.80
 $\Delta = 18^\circ 49' 05''$ (LT)
 $D = 1^\circ 23' 56''$
 $R = 4,096.06'$
 $T = 678.76'$
 $L = 1,345.29'$
 $E = 55.86'$
 P.C. STA. = 291+70.04
 P.T. STA. = 305+15.33

POT Sta. 300+02.04 WOLF RD.
 POT Sta. 306+77.94 U.S. RTE. 30 =

SEE INTERSECTION DETAIL SHEET #62 FOR BREAK POINT STATIONS AND OTHER DETAILS.



SEE INTERSECTION DETAIL FOR GRADING REQUIRED FOR MATCHING EXISTING AND PROPOSED PROFILES

724.84	725.53	726.13	726.38	726.54	726.53	726.40	725.95	725.44	724.81	724.31	724.16	724.40	724.85	725.49	726.12	726.56	726.77	726.83	726.70	726.41	726.18	725.66	724.63	723.63	722.68	721.77	720.86	719.97	719.16
303+00	304+00	305+00	306+00	307+00	308+00	309+00	310+00	311+00	312+00	313+00	314+00	315+00	316+00	317+00	318+00														

