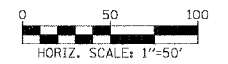
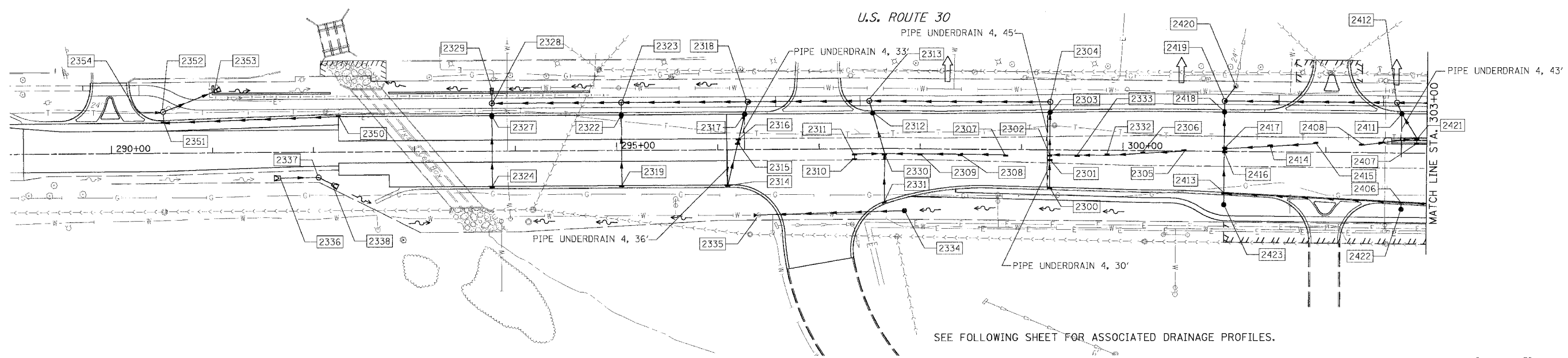


|                     |           |                  |              |           |
|---------------------|-----------|------------------|--------------|-----------|
| F.A.P. NO.          | SECTION   | COUNTY           | TOTAL SHEETS | SHEET NO. |
| 353                 | 12R - 4   | WILL             | 199          | 63        |
| STA.                | TO STA.   |                  |              |           |
| FED. ROAD DIST. NO. | ALIGNMENT | FED. AID PROJECT |              |           |



PIPE TABLE

| STRUCTURE |       | PIPE   |          |      |               | INVERT |        | TRENCH BACKFILL |
|-----------|-------|--------|----------|------|---------------|--------|--------|-----------------|
| U. S.     | D. S. | LENGTH | DIAMETER | TYPE | SLOPE (FT/FT) | U. S.  | D. S.  |                 |
| 2300      | 2301  | 26.2   | 12       | 2    | 0.0050        | 714.32 | 714.19 | 3.7             |
| 2301      | 2302  | 6.0    | 12       | 2    | 0.0050        | 714.19 | 714.16 | 1.0             |
| 2305      | 2306  | 53.2   | 12       | 2    | 0.0050        | 715.47 | 715.20 | 8.1             |
| 2306      | 2332  | 78.3   | 12       | 2    | 0.0050        | 715.20 | 714.81 | 11.1            |
| 2332      | 2333  | 30.0   | 12       | 1    | 0.0050        | 714.81 | 714.66 | 4.3             |
| 2333      | 2302  | 27.0   | 12       | 1    | 0.0050        | 714.66 | 714.53 | 3.5             |
| 2302      | 2303  | 42.2   | 12       | 2    | 0.0050        | 714.16 | 713.95 | 6.7             |
| 2303      | 2304  | 10.3   | 12       | 2    | 0.0050        | 713.95 | 713.90 | 3.1             |
| 2304      | 2313  | 178.0  | 12       | 2    | 0.0080        | 713.82 | 711.40 | 121.0           |
| 2307      | 2308  | 45.7   | 12       | 2    | 0.0050        | 713.40 | 713.17 | 7.9             |
| 2308      | 2309  | 40.8   | 12       | 2    | 0.0050        | 713.17 | 712.97 | 6.2             |
| 2309      | 2330  | 35.0   | 12       | 2    | 0.0050        | 712.97 | 712.79 | 4.6             |
| 2310      | 2311  | 6.0    | 12       | 2    | 0.0050        | 712.97 | 712.59 | 4.6             |
| 2311      | 2330  | 30.0   | 12       | 2    | 0.0100        | 712.59 | 712.25 | 4.6             |
| 2331      | 2330  | 47.6   | 12       | 2    | 0.0050        | 712.59 | 712.35 | 6.8             |
| 2330      | 2313  | 54.5   | 12       | 2    | 0.0050        | 712.25 | 711.98 | 9.4             |
| 2313      | 2318  | 120.0  | 12       | 2    | 0.0080        | 711.40 | 710.44 | 75.8            |
| 2314      | 2315  | 47.1   | 12       | 2    | 0.0050        | 711.00 | 710.76 | 7.7             |
| 2315      | 2316  | 27.8   | 12       | 2    | 0.0080        | 710.76 | 710.63 | 6.0             |
| 2316      | 2317  | 24.7   | 12       | 2    | 0.0050        | 710.63 | 710.50 | 5.1             |
| 2317      | 2318  | 12.9   | 12       | 2    | 0.0050        | 710.50 | 710.44 | 4.5             |
| 2318      | 2323  | 125.0  | 15       | 2    | 0.0080        | 710.19 | 709.19 | 50.0            |
| 2319      | 2323  | 82.5   | 12       | 2    | 0.0050        | 709.92 | 709.51 | 0.0             |
| 2323      | 2328  | 128.0  | 18       | 2    | 0.0080        | 708.94 | 707.91 | 51.8            |
| 2324      | 2328  | 82.5   | 12       | 2    | 0.0050        | 708.59 | 708.18 | 0.0             |
| 2328      | 2329  | 8.7    | 18       | 2    | 0.0080        | 707.70 | 707.63 | 3.6             |
| 2334      | 2335  | 143.4  | 24       | 2    | 0.0050        | 712.60 | 711.88 | 7.2             |
| 2336      | 2337  | 38.0   | 30 ERS   | 1    | 0.0050        | 707.19 | 707.00 | 0.0             |
| 2337      | 2338  | 14.7   | 30       | 1    | 0.0050        | 707.00 | 706.93 | 0.0             |
| 2350      | 2351  | 173.1  | 12       | 2    | 0.0050        | 707.46 | 706.59 | 51.9            |
| 2351      | 2352  | 10.8   | 12       | 2    | 0.0050        | 706.59 | 706.54 | 1.3             |
| 2352      | 2353  | 54.1   | 27       | 1    | 0.0012        | 706.54 | 706.47 | 8.0             |
| 2354      | 2352  | 26.1   | 24       | 1    | 0.0012        | 706.57 | 706.54 | 0.0             |
| 2404      | 2412  | 200.00 | 12       | 2    | 0.0104        | 718.43 | 716.35 | 142.4           |
| 2410      | 2407  | 40.00  | 12       | 2    | 0.0050        | 718.60 | 718.40 | 5.7             |
| 2407      | 2421  | 6.00   | 12       | 2    | 0.0104        | 718.40 | 718.33 | 0.8             |
| 2405      | 2406  | 65.10  | 12       | 2    | 0.0100        | 718.46 | 717.81 | 8.5             |
| 2406      | 2413  | 175.16 | 15       | 2    | 0.0040        | 716.58 | 715.88 | 35.0            |
| 2408      | 2421  | 55.38  | 12       | 2    | 0.0050        | 717.94 | 717.66 | 7.9             |
| 2421      | 2411  | 28.30  | 12       | 2    | 0.0050        | 717.66 | 717.52 | 5.2             |
| 2411      | 2412  | 12.08  | 12       | 2    | 0.0104        | 717.52 | 717.46 | 3.9             |
| 2412      | 2419  | 170.00 | 15       | 2    | 0.0104        | 716.10 | 714.33 | 59.8            |
| 2415      | 2414  | 45.10  | 12       | 2    | 0.0100        | 717.35 | 716.90 | 5.9             |
| 2414      | 2417  | 45.10  | 12       | 2    | 0.0100        | 716.90 | 716.45 | 5.9             |
| 2422      | 2406  | 8.0    | 12       | 1    | 0.0100        | 717.65 | 717.58 | 0.0             |
| 2423      | 2413  | 13.80  | 12       | 1    | 0.0040        | 714.95 | 714.30 | 0.0             |
| 2413      | 2419  | 89.00  | 18       | 2    | 0.0030        | 714.30 | 714.63 | 0.0             |
| 2419      | 2420  | 18.24  | 24       | 2    | 0.0072        | 714.33 | 714.20 | 4.7             |

- ① STORM SEWERS JACKED IN PLACE OF THE DIAMETER SPECIFIED
- ② STORM SEWER (WATER MAIN REQUIREMENTS) OF THE DIAMETER SPECIFIED
- \*\* SEE DETAIL 'DETAIL OF STORM SEWER CONNECTION TO EXISTING SEWER'

STRUCTURE TABLE

| STR. # | STATION   | OFFSET | TYPE     | FRAME | RIM ELEVATION | INVERT ELEVATION |        |        |        |
|--------|-----------|--------|----------|-------|---------------|------------------|--------|--------|--------|
|        |           |        |          |       |               | NORTH            | EAST   | SOUTH  | WEST   |
| 2300   | 299+28.00 | 37.2   | CB C     | 24    | 718.48        | 714.32           |        |        |        |
| 2301   | 299+28.00 | 11.0   | IN B     | 24    | 718.90        | 714.19           |        |        |        |
| 2302   | 299+28.00 | 5.0    | IN B     | 24    | 718.69        | 714.16           |        |        |        |
| 2303   | 299+28.00 | -37.2  | CB A4    | 24    | 718.48        | 713.95           |        |        |        |
| 2304   | 299+28.00 | -47.5  | MH A4    | 1-CL  | 718.82        |                  |        |        |        |
| 2305   | 300+60.00 | -1.6   | CB C     | 24    | 720.10        |                  |        |        |        |
| 2306   | 300+20.00 | 1.0    | IN B     | 24    | 719.65        |                  | 715.20 |        |        |
| 2307   | 298+85.00 | 5.0    | CB C     | 24    | 718.25        |                  |        |        |        |
| 2308   | 298+40.00 | 5.0    | IN B     | 24    | 717.80        |                  | 713.17 |        |        |
| 2309   | 298+00.00 | 5.0    | IN B     | 24    | 717.39        |                  | 712.97 |        |        |
| 2310   | 297+35.00 | 11.0   | CB C     | 24    | 716.95        | 712.58           |        |        |        |
| 2311   | 297+35.00 | 5.0    | IN B     | 24    | 716.71        |                  |        |        |        |
| 2312   | 297+84.00 | -35.0  | CB A4    | 24    | 716.67        | 712.04           |        |        |        |
| 2313   | 297+50.00 | -47.4  | MH A4    | 1-CL  | 716.93        |                  |        |        |        |
| 2314   | 296+10.00 | 35.0   | CB C     | 24    | 715.18        | 711.00           |        |        |        |
| 2315   | 296+20.00 | -5.0   | IN B     | 24    | 715.88        | 710.76           |        |        |        |
| 2316   | 296+21.00 | -11.0  | IN B     | 24    | 715.77        | 710.63           |        |        |        |
| 2317   | 296+27.00 | -35.0  | CB A4    | 24    | 715.35        | 710.50           |        |        |        |
| 2318   | 296+30.00 | -47.5  | MH A4    | 1-CL  | 715.68        |                  | 710.44 |        | 710.19 |
| 2319   | 295+05.00 | 35.0   | CB C     | 24    | 714.09        | 709.92           |        |        |        |
| 2322   | 295+05.00 | -35.0  | CB A4    | 24    | 714.09        | 709.57           |        |        |        |
| 2323   | 295+05.00 | -47.5  | MH A4    | 1-CL  | 714.39        |                  | 709.19 |        | 708.94 |
| 2324   | 293+77.00 | 35.0   | CB C     | 24    | 712.76        | 708.59           |        |        |        |
| 2327   | 293+77.00 | -35.0  | CB A4    | 24    | 712.76        | 708.24           |        |        |        |
| 2328   | 293+77.00 | -47.5  | MH A4    | 1-CL  | 713.06        | 707.70           |        |        |        |
| 2329   | 293+77.00 | -56.3  | FES 18   |       | -             |                  |        |        |        |
| 2330   | 297+65.00 | 5.0    | IN B     | 24    | 717.03        | 712.25           | 712.79 | 712.35 |        |
| 2331   | 297+64.00 | 52.6   | CB C     | 24    | 716.75        | 712.59           |        |        |        |
| 2332   | 299+85.00 | 3.4    | IN B     | 24    | 719.26        |                  | 714.81 |        | 714.81 |
| 2333   | 299+55.00 | 5.0    | IN B     | 24    | 718.96        |                  | 714.66 |        | 714.66 |
| 2334   | 297+82.39 | 61.8   | CB A5    | 8     | 716.10        |                  |        |        | 712.60 |
| 2335   | 296+39.00 | 65.2   | FES 24   |       | -             |                  | 711.88 |        |        |
| 2336   | 291+67.00 | 25.4   | FES30ERS |       | -             |                  | 707.19 |        |        |
| 2337   | 292+05.00 | 25.1   | MH A5    | 1-CL  | 710.30        |                  | 707.00 |        | 707.00 |
| 2338   | 292+18.00 | 32.0   | FES 30   |       | -             |                  |        |        | 706.93 |
| 2350   | 292+25.00 | -35.0  | CB C     | 24    | 711.82        |                  | 707.46 |        | 707.46 |
| 2351   | 290+52.00 | -30.1  | IN B     | 24    | 711.22        | 706.59           |        |        |        |
| 2352   | 290+52.00 | -40.9  | MH A5    | 1-CL  | 711.30        |                  | 706.54 |        | 706.54 |
| 2353   | 291+02.30 | -60.8  | FES27    |       | -             |                  |        |        | 706.47 |
| 2354   | 290+26.60 | -41.0  | **       |       | -             |                  | 706.57 |        |        |
| 2406   | 302+75.00 | 48.5   | IN B     | 24    | 721.84        |                  | 717.81 | 717.58 | 717.58 |
| 2407   | 302+90.00 | -9.0   | IN B     | 11V   | 722.71        | 718.40           | 718.40 |        |        |
| 2408   | 302+35.00 | -7.4   | CB C     | 24    | 722.05        |                  | 717.94 |        |        |
| 2411   | 302+75.00 | -39.0  | CB A4    | 24    | 722.08        | 717.52           |        |        | 717.52 |
| 2412   | 302+70.00 | -50.0  | MH A4    | 1-CL  | 722.36        |                  | 716.35 | 717.46 | 716.10 |
| 2413   | 301+00.00 | 40.9   | CB A5    | 24    | 720.21        | 714.90           | 715.88 | 714.90 |        |
| 2414   | 301+45.00 | -7.4   | IN B     | 24    | 721.07        |                  | 716.90 |        | 716.90 |
| 2415   | 301+90.00 | -10.5  | CB C     | 24    | 721.58        |                  |        |        | 717.35 |
| 2416   | 301+00.00 | 1.7    | CB A5    | 24    | 720.57        | 714.53           |        | 714.53 |        |
| 2417   | 301+00.00 | -4.4   | CB A5    | 24    | 720.55        | 714.51           | 716.45 |        | 714.51 |
| 2418   | 301+00.00 | -39.0  | CB A5    | 24    | 720.26        | 714.40           |        |        | 714.40 |

STRUCTURE TABLE (CONT.)

| STR. # | STATION   | OFFSET | TYPE  | FRAME | RIM ELEVATION | INVERT ELEVATION |        |        |        |
|--------|-----------|--------|-------|-------|---------------|------------------|--------|--------|--------|
|        |           |        |       |       |               | NORTH            | EAST   | SOUTH  | WEST   |
| 2419   | 301+00.00 | -50.0  | MH A5 | 1 CL  | 720.64        | 714.33           | 714.33 | 714.63 |        |
| 2420   | 301+10.77 | -64.7  | EX MH | -     | 720.37        | 713.96           |        | 714.20 |        |
| 2421   | 302+90.00 | -15.0  | IN B  | 24    | 722.71        | 717.66           |        |        | 717.66 |
| 2422   | 302+75.00 | 56.0   | CB C  | 8     | 721.39        | 717.65           |        |        |        |
| 2423   | 301+00.00 | 52.8   | CB C  | 8     | 718.61        | 714.95           |        |        |        |

- NOTES:
1. STRUCTURES TO BE CONSTRUCTED ON JACKED STORM SEWER. REMOVAL OF ANY STORM SEWER OR INSTALLATION OF ANY NEW STORM SEWER ASSOCIATED WITH THE CONSTRUCTION OF THE STRUCTURE ONTO THE JACKED PIPE SHALL BE INCLUDED IN THE COST OF THE DRAINAGE STRUCTURE BEING CONSTRUCTED
  2. PIPE UNDERDRAINS ARE TO BE INSTALLED A MINIMUM OF 30" BELOW TOP OF PAVEMENT, AND A MINIMUM SLOPE OF 0.50%.
  3. OFFSETS TO STRUCTURES ARE GIVEN AS FOLLOWS:
    - LOCATED IN CURB LINE - OFFSET TO EDGE OF PAVEMENT
    - LOCATED IN GRASS - OFFSET TO CENTER OF STRUCTURE
    - LOCATED IN PAVEMENT - OFFSET TO FUTURE EDGE OF PAVEMENT (SEE INTERSECTION DETAIL SHEETS)
    - FES - OFFSET TO END OF STORM SEWER

| REVISIONS |      | ILLINOIS DEPARTMENT OF TRANSPORTATION   |
|-----------|------|---|
| NAME      | DATE |   |
|           |      | DRAINAGE AND UTILITIES<br>U.S. RTE. 30 (LINCOLN HIGHWAY)<br>STA. 289+00 TO STA. 303+00<br>SCALE : 1" = 50'<br>DATE : 03/21/2008 |
|           |      |   |
|           |      |   |
|           |      |   |
|           |      |   |

DRAWN BY : BAE  
CHECKED BY : GB