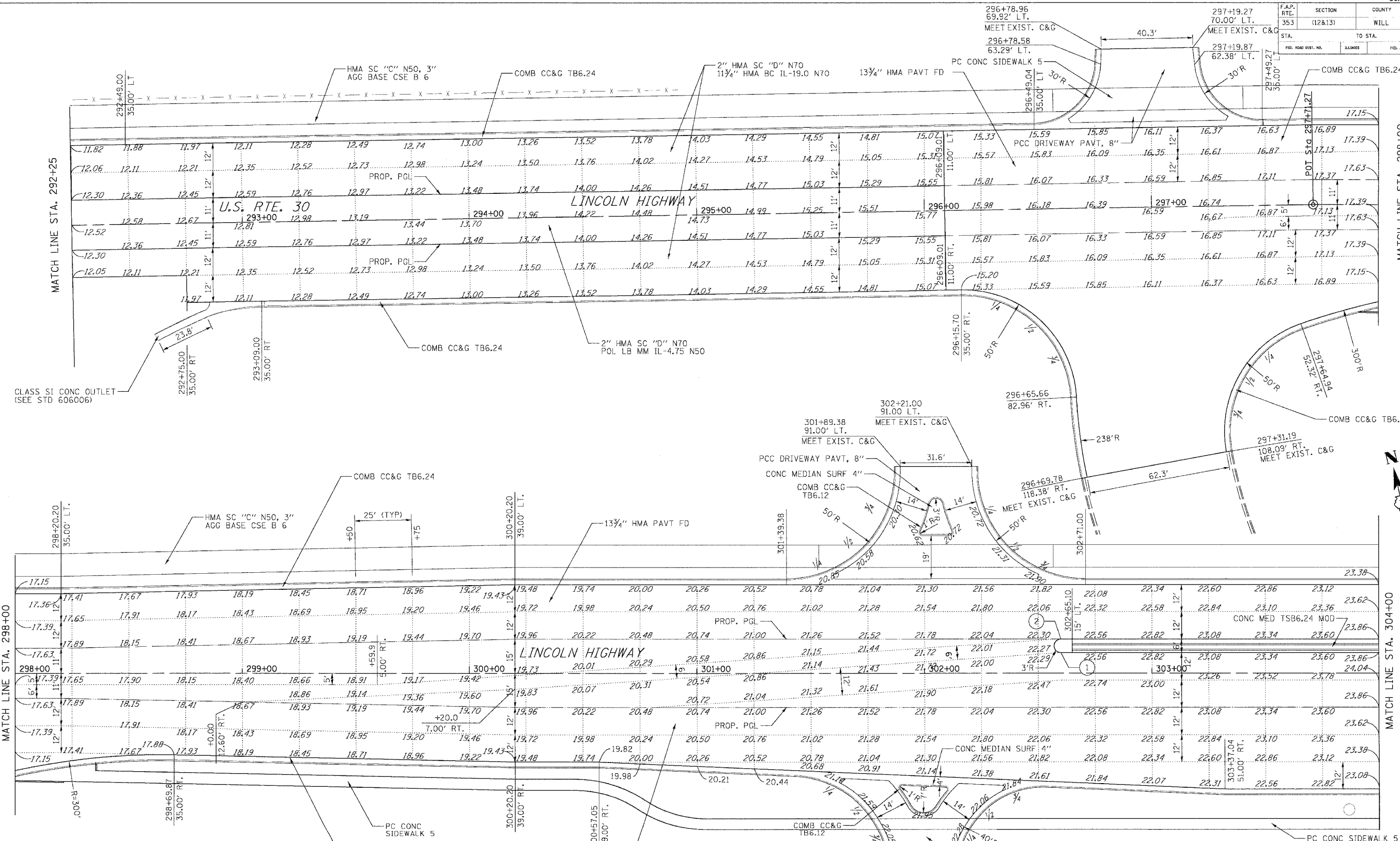


F.A.P. RATE	SECTION	COUNTY	TOTAL SHEETS	SHEET NO.
353	(12&13)	WILL	199	70
STA.	TO STA.		FED. AID PROJECT	
FED. ROAD DIST. NO.	ILLINOIS			



POINT	STATION	OFFSET	ELEVATION
1	302+60.00	9.00' LT	722.39
2	302+60.00	15.00' LT	722.39

NOTE: ADD 700.00 FT. TO ELEVATIONS SHOWN.

REVISIONS	
NAME	DATE

ILLINOIS DEPARTMENT OF TRANSPORTATION
INTERSECTION DETAILS
 U.S. RTE. 30 (LINCOLN HIGHWAY)
 & WOLF ROAD

SCALE: 1" = 20'
 DATE: 03/21/2008
 DRAWN BY: BEC
 CHECKED BY: G.B.