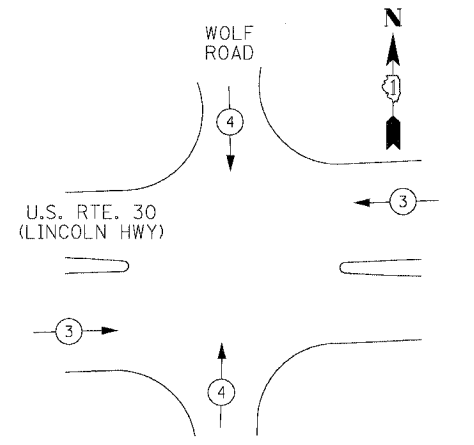


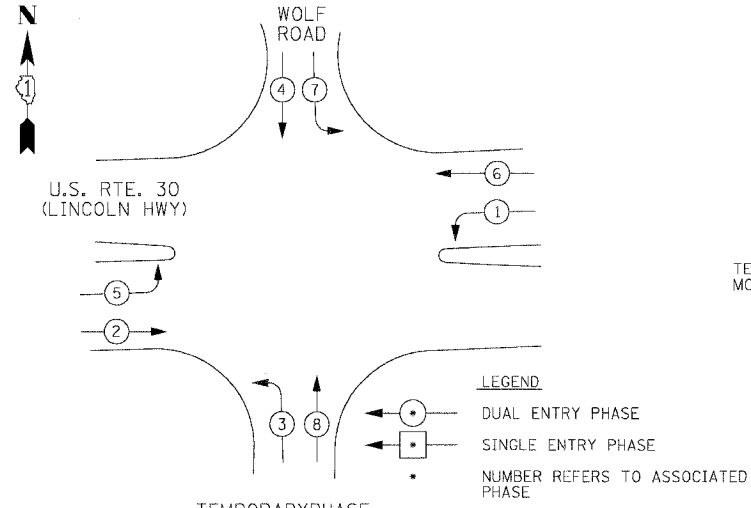
F.A.P. RTE.	SECTION	COUNTY	TOTAL SHEETS	SHEET NO.
353	12R - 4	WILL	199	97
STA.	TO STA.			
FED. ROAD DIST. NO.	ILLINOIS	FED. AID PROJECT		

TEMPORARY EMERGENCY VEHICLE PREEMPTION SEQUENCE

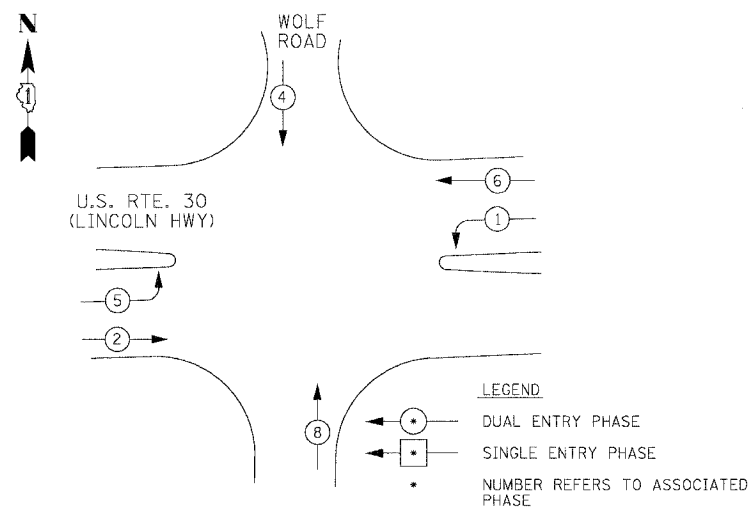


EMERGENCY VEHICLE PREEMPTORS	3	4
MOVEMENT	→	↑

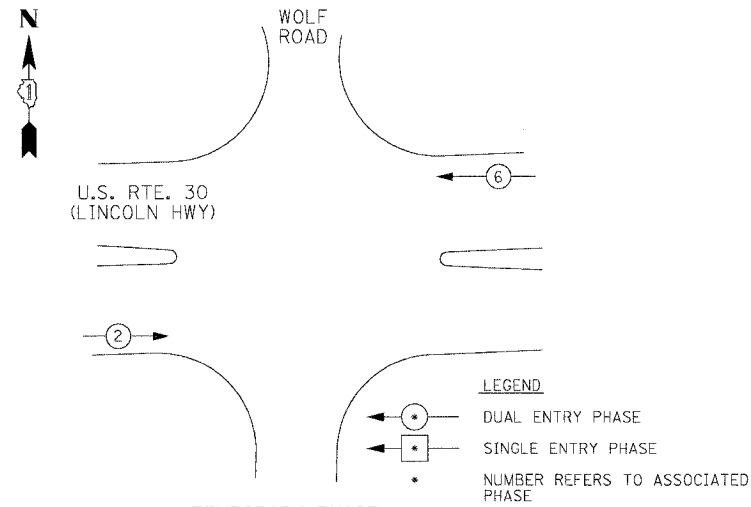
TEMPORARY CONTROLLER SEQUENCE



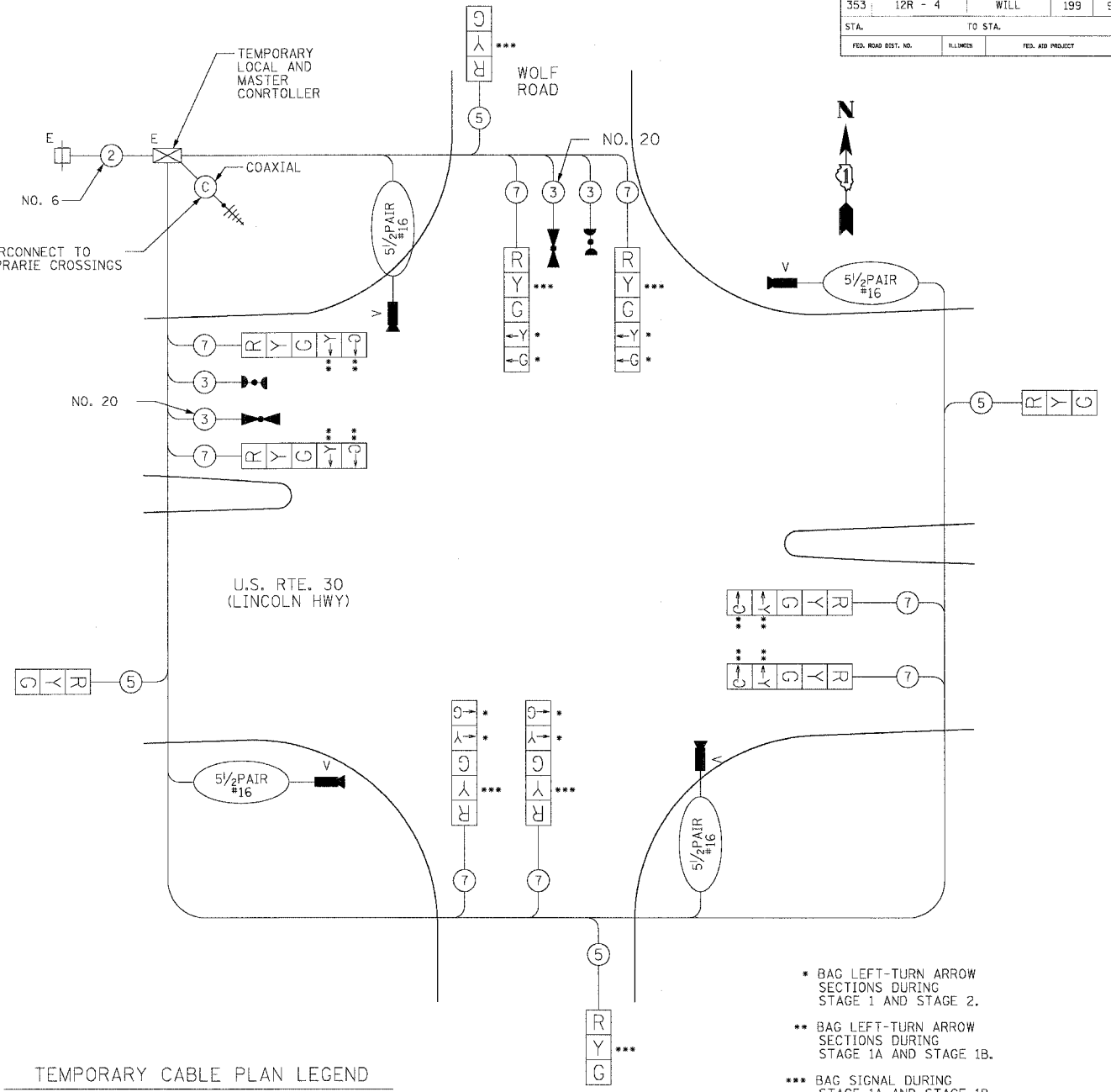
TEMPORARY PHASE DESIGNATION DIAGRAM EXISTING AND STAGE 3



TEMPORARY PHASE DESIGNATION DIAGRAM STAGE 1 AND STAGE 2



TEMPORARY PHASE DESIGNATION DIAGRAM STAGE 1A AND STAGE 1B



TEMPORARY CABLE PLAN LEGEND

- TEMPORARY TRAFFIC SIGNAL SECTION OR PEDESTRIAN SIGNAL SECTION 12" (300 mm)
- TEMPORARY CONTROLLER CABINET
- TEMPORARY SERVICE INSTALLATION
- INDICATES NUMBER OF CONDUCTORS IN CABLE. ALL CONDUCTORS TO BE NUMBER 14 AWG WIRE UNLESS OTHERWISE NOTED.
- EMERGENCY VEHICLE LIGHT DETECTOR
- CONFIRMATION BEACON
- VEHICLE DETECTOR, INDUCTION LOOP
- PEDESTRIAN PUSHBUTTON DETECTOR
- 12" (300mm) PEDESTRIAN SIGNAL SECTION
- VIDEO DETECTION
- RADIO INTERCONNECT ANTENNA

EXISTING TEMPORARY CABLE PLAN ALL CONSTRUCTION STAGES

- * BAG LEFT-TURN ARROW SECTIONS DURING STAGE 1 AND STAGE 2.
- ** BAG LEFT-TURN ARROW SECTIONS DURING STAGE 1A AND STAGE 1B.
- *** BAG SIGNAL DURING STAGE 1A AND STAGE 1B.

THE TRAFFIC CONTROL EQUIPMENT FOR THIS PROJECT SHALL BE "EAGLE".

TYPE	NO. LAMPS	WATTAGE INCAND.	WATTAGE LED	%OPERATION	TOTAL WATTAGE
SIGNAL (RED)	12	-	17	0.50	102
(YELLOW)	12	-	25	0.25	75
(GREEN)	12	-	15	0.25	45
ARROW	16	-	12	0.10	19.2
PED. SIGNAL	-	-	25	1.00	-
CONTROLLER	1	-	100	1.00	100.00
FLASHER	-	-	-	0.50	0
ENERGY COSTS TO:				TOTAL =	341.2

VILLAGE OF MOKENA
11004 CARPENTER STREET
MOKENA, ILLINOIS 60448
ENERGY SUPPLY CONTACT: CDC REPRESENTATIVE
PHONE: (815) 727-5656
COMPANY: COMED

NAME	DATE

ILLINOIS DEPARTMENT OF TRANSPORTATION
TEMPORARY CABLE PLAN, TEMPORARY PHASE DESIGNATION DIAGRAM, TEMPORARY EMERGENCY VEHICLE PREEMPTION
US RTE. 30 AT WOLF ROAD
SCALE : 1" = NTS
DATE : 03/21/2008
DRAWN BY : ZH
DESIGNED BY : BAE
CHECKED BY : GB