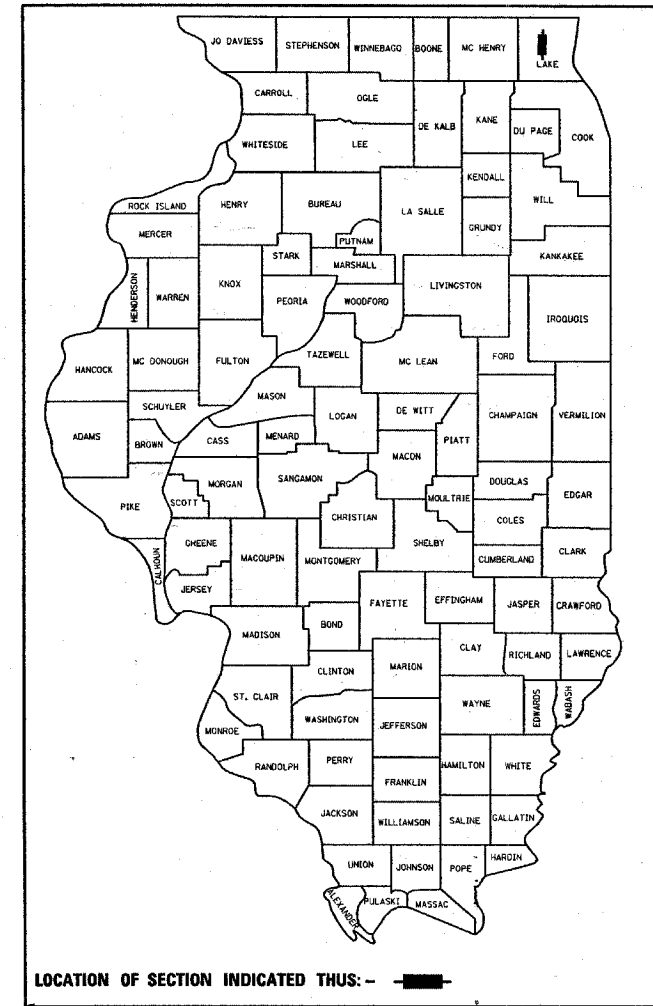


STATE OF ILLINOIS  
DEPARTMENT OF TRANSPORTATION  
DIVISION OF HIGHWAYS

F.A.P. RTE.	SECTION	COUNTY	TOTAL SHEETS	SHEET NO.
342	G-RS-4	LAKE	24	1
FED. ROAD DIST. NO.		ILLINOIS	CONTRACT NO. 60C32	

D-91-201-07



LOCATION OF SECTION INDICATED THUS: — ■ —

# PROPOSED HIGHWAY PLANS

F.A.P. ROUTE 342: ILL 120 (E BELVIDERE RD)  
W. OF US 45 TO ATKINSON RD. (E. OF ILL 83)  
SECTION G-RS-4  
RESURFACING (MAINTENANCE)  
LAKE COUNTY  
C-91-201-07

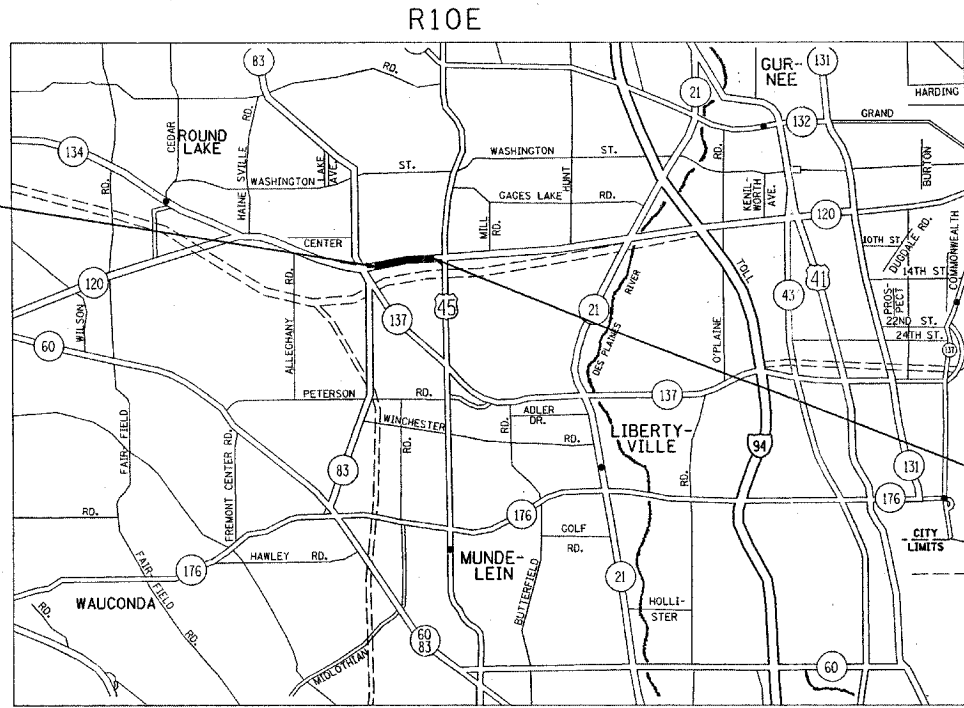
FOR INDEX OF SHEETS, SEE SHEET NO. 2

IMPROVEMENT LOCATED  
IN THE VILLAGE OF GRAYSLAKE

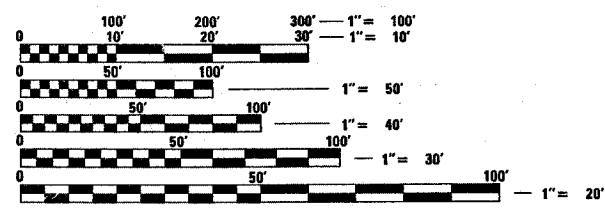


TRAFFIC DATA  
2005 ADT = 19,800  
POSTED SPEED = 35 MPH

IMPROVEMENT BEGINS:  
STATION 33+95



IMPROVEMENT ENDS:  
STATION 84+47



FULL SIZE PLANS HAVE BEEN PREPARED USING STANDARD ENGINEERING SCALES. REDUCED SIZED PLANS WILL NOT CONFORM TO STANDARD SCALES. IN MAKING MEASUREMENTS ON REDUCED PLANS, THE ABOVE SCALES MAY BE USED.

J.U.L.I.E.  
JOINT UTILITY LOCATION INFORMATION FOR EXCAVATION  
1-800-892-0123  
OR 811

LAKE VILLA AND AVON TOWNSHIPS

GROSS & NET LENGTH OF IMPROVEMENT = 5052 FEET (0.95 MILE)

PROJECT ENGINEER - FRITZ GUILLAUME  
PROJECT MANAGER - KEN ENG (847) 705-4247

CONTRACT NO. 60C32

STATE OF ILLINOIS  
DEPARTMENT OF TRANSPORTATION  
DIVISION OF HIGHWAYS

SUBMITTED April 3, 20 08

Dean M. O'Keefe DEPUTY DIRECTOR OF HIGHWAYS, REGION ENGINEER

May 9, 20 08  
Eric E. Harn ENGINEER OF DESIGN AND ENVIRONMENT

May 9, 20 08  
Christine M. Reed DIRECTOR OF HIGHWAYS, CHIEF ENGINEER

PRINTED BY THE AUTHORITY  
OF THE STATE OF ILLINOIS