

SUMMARY OF QUANTITIES			UABAN		
CODE NO	ITEM	UNIT	100% STATE TOTAL QUANTITIES	CONSTRUCTION TYPE CODE	
				IL. RTE. 58 BRIDGE SFTY-2A	IL. RTE. 72 BRIDGE SFTY-2A
40600200	BITUMINOUS MATERIALS (PRIME COAT)	TON	0.4	0.1	0.3
40603340	HOT-MIX ASPHALT SURFACE COURSE, MIX "D", N70	TON	74	27	47
44000100	PAVEMENT REMOVAL	SQ YD	2,365	1,048	1,317
44000155	HOT-MIX ASPHALT SURFACE REMOVAL, 1 1/2"	SQ YD	873	321	552
44001700	COMBINATION CONCRETE CURB AND GUTTER REMOVAL AND REPLACEMENT	FOOT	2,946	1,446	1,500
44002020	CONCRETE MEDIAN SURFACE REMOVAL	SQ FT	18,706	9,254	9,452
50101700	REMOVAL OF EXISTING SUPERSTRUCTURES NO. 1	EACH	1	1	
50101800	REMOVAL OF EXISTING SUPERSTRUCTURES NO. 2	EACH	1		1
50300100	FLOOR DRAINS	EACH	22	18	4
50300255	CONCRETE SUPERSTRUCTURES	CU YD	90.8	56.6	34.2
50300260	BRIDGE DECK GROOVING	SQ YD	724	466	258
50300300	PROTECTIVE COAT	SQ YD	1,152	766	386
50400205	PRECAST PRESTRESSED CONCRETE DECK BEAMS (11" DEPTH)	SQ FT	3,236		3,236
50400605	PRECAST PRESTRESSED CONCRETE DECK BEAMS (33" DEPTH)	SQ FT	6,300	6,300	
50500405	FURNISHING AND ERECTING STRUCTURAL STEEL	POUND	3,500	1,500	2,000
50800205	REINFORCEMENT BARS, EPOXY COATED	POUND	24,480	17,540	6,940
50800515	BAR SPLICERS	EACH	115	71	44
51500100	NAME PLATES	EACH	2	1	1
50901720	BICYCLE RAILING	FOOT	70	70	
50901750	PARAPET RAILING	FOOT	70	70	
60255500	MANHOLES TO BE ADJUSTED	EACH	4	3	1
60618300	CONCRETE MEDIAN SURFACE, 4 INCH	SQ FT	18,706	9,254	9,452
* 63000000	STEEL PLATE BEAM GUARD RAIL, TYPE A	FOOT	37.5	37.5	
* 63100085	TRAFFIC BARRIER TERMINAL, TYPE 6	EACH	3	1	2
* 63100105	TRAFFIC BARRIER TERMINAL, TYPE 10	EACH	1	1	
* 63100167	TRAFFIC BARRIER TERMINAL, TYPE 1 (SPECIAL) TANGENT	EACH	1		1
63200310	GUARDRAIL REMOVAL	FOOT	180	78	102
63300575	REMOVE AND RE-ERECT RAIL ELEMENT OF EXISTING GUARD RAIL	FOOT	58	58	

SUMMARY OF QUANTITIES			UABAN 100% STATE		
CODE NO	ITEM	UNIT	TOTAL QUANTITIES	CONSTRUCTION TYPE CODE	
				IL. RTE. 58 BRIDGE SFTY-2A	IL. RTE. 72 BRIDGE SFTY-2A
67000400	ENGINEER'S FIELD OFFICE, TYPE A	CAL MO	6	3	3
67100100	MOBILIZATION	L SUM	1	0.5	0.5
70101800	TRAFFIC CONTROL AND PROTECTION, (SPECIAL)	L SUM	1	0.5	0.5
70103815	TRAFFIC CONTROL SURVEILLANCE	CAL DA	60	30	30
70301000	WORK ZONE PAVEMENT MARKING REMOVAL	SQ FT	4,395	2,054	2,341
70400100	TEMPORARY CONCRETE BARRIER	FOOT	2,387.5	1,275	1,112.5
70400200	RELOCATE TEMPORARY CONCRETE BARRIER	FOOT	2,387.5	1,275	1,112.5
* 78000200	THERMOPLASTIC PAVEMENT MARKING - LINE 4"	FOOT	3,675	1,263	2,412
* 78008210	POLYUREA PAVEMENT MARKING TYPE I - LINE 4"	FOOT	1,083	907	176
* 78100105	RAISED REFLECTIVE PAVEMENT MARKER (BRIDGE)	EACH	8	4	4
* 78100300	REPLACEMENT REFLECTOR	EACH	100	50	50
78300100	PAVEMENT MARKING REMOVAL	SQ FT	1,800	790	1,010
X0321743	SILICONE JOINT SEALER, 1"	FOOT	102	102	
X0322467	TEMPORARY INFORMATION SIGNING FOR LANE CLOSURE	SQ FT	120.8	69.4	51.4
X0323076	SILICONE JOINT SEALER, 1 3/4"	FOOT	176	102	74
X0325303	STRUCTURAL REPAIR OF CONCRETE (DEPTH GREATER THAN 5 INCHES)	SQ FT	14	5	9
X0325305	STRUCTURAL REPAIR OF CONCRETE (DEPTH EQUAL TO OR LESS THAN 5 INCHES)	SQ FT	164	25	139
X0325775	WET REFLECTIVE TEMPORARY TAPE, TYPE III, 4 INCH	FOOT	13,186	6,162	7,024
X0712400	TEMPORARY PAVEMENT	SQ YD	2,365	1,048	1,317
X5030304	CONCRETE WEARING SURFACE, 4"	SQ YD	572	572	
X5030305	CONCRETE WEARING SURFACE, 5"	SQ YD	292		292
Z0001900	ASBESTOS BEARING PAD REMOVAL	EACH	46	46	
Z0013798	CONSTRUCTION LAYOUT	L SUM	1	0.5	0.5
Z0030240	IMPACT ATTENUATORS, TEMPORARY (NON-REDIRECTIVE), TEST LEVEL 2	EACH	4	2	2
Z0030340	IMPACT ATTENUATORS RELOCATE (NON-REDIRECTIVE), TEST LEVEL 2	EACH	4	2	2
Z0073700	TEMPORARY WALL BRACING SYSTEM	L SUM	1		1

* SPECIALTY ITEM

FILE NAME = 60055 summary.dgn
PLOT DATE = 6/25/2008



DESIGNED - S.J.P.
DRAWN - A.C.S.
CHECKED - E.J.M.
DATE - APRIL 21, 2008

REVISED -
REVISED -
REVISED -
REVISED -


STATE OF ILLINOIS
DEPARTMENT OF TRANSPORTATION

Rev. 7-15-08
SUMMARY OF QUANTITIES
IL. RTE. 58 & IL. RTE. 72

SCALE: NONE SHEET NO. 1 OF 1 SHEETS STA. TO STA.

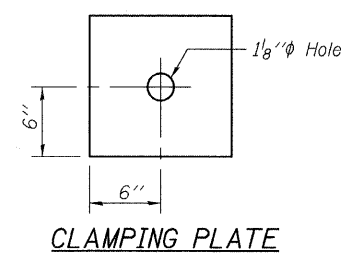
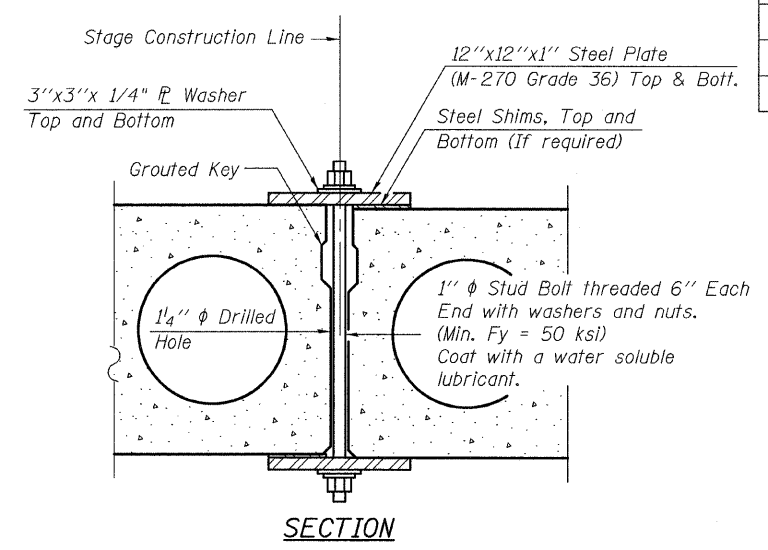
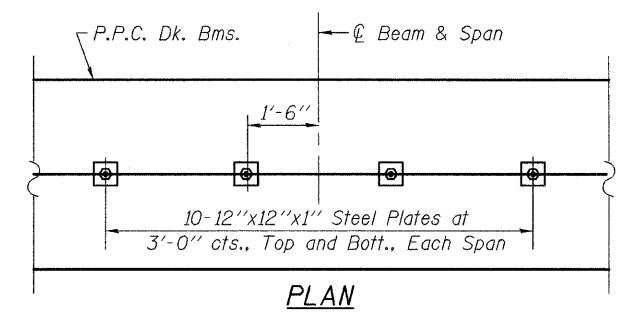
F.A.P. RTE. 58/72 SECTION 2008-007 B COUNTY COOK TOTAL SHEETS 39 SHEET NO. 3 CONTRACT NO. 60D55
FED. ROAD DIST. NO. 1 ILLINOIS FED. AID PROJECT

TOTAL BILL OF MATERIAL

DESCRIPTION	UNIT	SUPER.	SUB.	TOTAL
Removal of Existing Superstructures <i>No. 1</i> 	Each	1	-	1
Floor Drains	Each	18	-	18
Concrete Superstructure	Cu. Yd.	56.6	-	56.6
Bridge Deck Grooving	Sq. Yd.	466	-	466
Protective Coat	Sq. Yd.	766	-	766
Concrete Wearing Surface, 4"	Sq. Yd.	572	-	572
Precast Prestressed Concrete Deck Beams (33" Depth)	Sq. Ft.	6,300	-	6,300
Furnishing & Erecting Structural Steel	Pound	1,500	-	1,500
Reinforcement Bars, Epoxy Coated	Pound	17,540	-	17,540
Bar Splicers	Each	71	-	71
Bicycle Railing	Foot	70	-	70
Parapet Railing	Foot	70	-	70
Silicone Joint Sealer, 1 In.	Foot	102	-	102
Silicone Joint Sealer, 1 3/4 In.	Foot	102	-	102
Structural Repair of Concrete (Depth Greater than 5 In.)	Sq. Ft.	-	5	5
Structural Repair of Concrete (Depth Equal to or Less than 5 In.)	Sq. Ft.	-	25	25
Asbestos Bearing Pad Removal	Each	46	-	46
Name Plates	Each	1	-	1

GENERAL NOTES:

- Plan dimensions and details relative to existing plans are subject to routine variations. The Contractor shall field verify existing dimensions and details affecting new construction and make necessary approved adjustments prior to construction or ordering of materials. Such variations shall not be cause for additional compensation for a change in the scope of work, however, the Contractor will be paid for the quantity actually furnished based upon the unit price bid for the work.
- The Reinforced Concrete Overlay, as specified on the plan details, shall be paid for at the Contract Unit Price Bid per Square Yard for Concrete Wearing Surface and pounds for Reinforcement Bars, Epoxy Coated.
- Reinforcement Bars shall conform to the requirements of ASTM A 706, Grade 60 (IL, Modified). See Special Provisions.
- Reinforcement Bars designated (E) shall be Epoxy Coated.
- The minimum thickness of the Concrete Overlay shall be 4 inches and varies as required to adjust for the new Profile Grade and Beam Camber.
- The Contractor is advised that the existing PPC Deck Beams are in a deteriorated condition with reduced load carrying capacity. It is the Contractor's responsibility to account for the condition of the Beams when developing Construction Procedures for Removal and Replacement of the Superstructure.
- If the Contractor's procedures for existing Beam Removal or placement of new Beams involves placement of heavy equipment on the new Deck Beams, a detailed procedure shall be submitted to the Engineer for approval. The procedure shall include calculations, sealed by an Illinois Licensed Structural Engineer, verifying the structural adequacy of the Beams for the proposed loads.
- Any damage done to the Bridge during Beam removal shall be repaired by the Contractor. Cost to be included with Removal of Existing Superstructures.
- All Structural Steel shall be Shop Painted with the Inorganic Zinc Rich Primer per AASHTO M300, Type 1. Cost Included with Furnishing and Erecting Structural Steel.
- No in-stream work will be allowed on this Project.
- Slipforming of the Parapets is not allowed.
- Repair of the abutments shall be completed prior to placement of the new deck beams.



*
Based on the Field Notes from I.D.O.T. Maintenance Engineers, dated September, 2007


NOTES:
As an alternate to Drilled Holes, the Contractor may request the Fabricator to cast 2" Dia. Semi-Circular Recesses in the side of each Beam adjacent to the Stage Construction Line. These Recesses must align to form a hole at the correct location for the Clamping Device Bolts. If the Contractor elects to use this Alternate, a Detail of the 2" Dia. Semi-Circular Recesses must be shown on the Shop Drawings.

SHEAR KEY CLAMPING DETAILS AT STAGE CONST. JT.

Cost included with Precast Prestressed Concrete Deck Beams. See Stage Construction Details for traffic lanes.

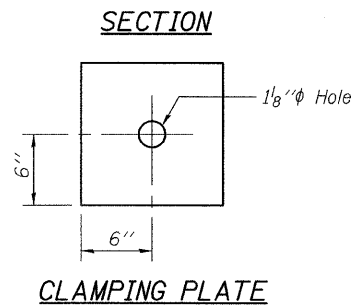
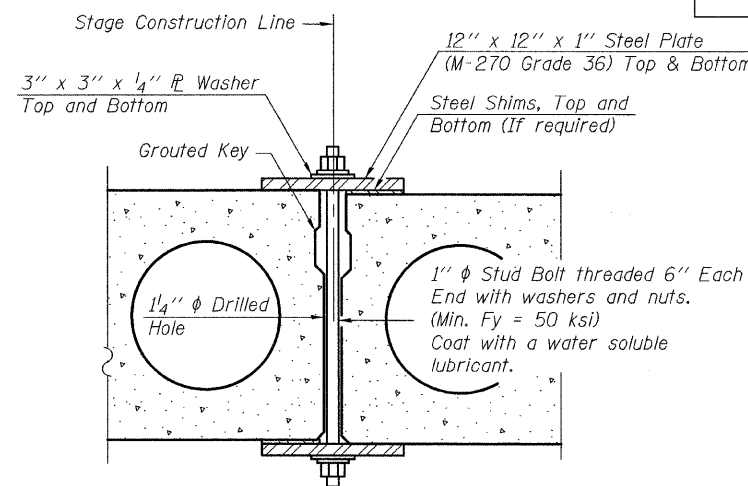
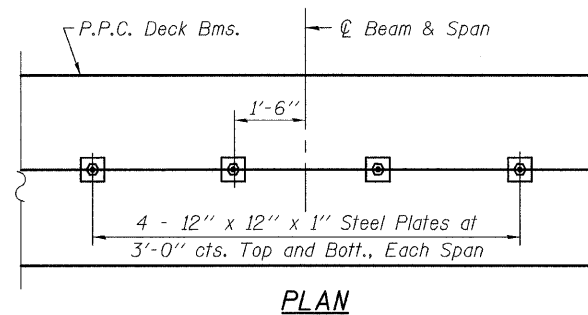
FILE NAME = gen_notes.sht	USER NAME = IDOT	DESIGNED - B.N.S.	REVISED -	STATE OF ILLINOIS DEPARTMENT OF TRANSPORTATION	GENERAL NOTES & TOTAL BILL OF MATERIAL GOLF ROAD (IL. RTE. 58) OVER SALT CREEK S.N. 016-0349	F.A.P. RTE. 559/341	SECTION 2008-007 B	COUNTY COOK	TOTAL SHEETS 39	SHEET NO. 13	
	PLOT SCALE = 1/8" = 1'-0"	CHECKED - B.N.S. / J.C.N.	REVISED -			SCALE: NONE	SHEET NO. S2 OF S12 SHEETS	STA. TO STA.	FED. ROAD DIST. NO.	ILLINOIS FED. AID PROJECT	CONTRACT NO. 60D55
	PLOT DATE = 6/30/2008	DATE - JUNE 30, 2008	REVISED -								

CR & A
CHRISTIAN-ROGE & ASSOCIATES, INC.
ENGINEERS / PLANNERS / SURVEYORS
211 W. WACKER DRIVE CHICAGO, IL. 60606
PHONE: (312)372-2023 FAX: (312)372-5274

 Rev. 7-15-08

TOTAL BILL OF MATERIAL

DESCRIPTION	UNIT	SUPER.	SUB.	TOTAL
Removal of Existing Superstructures No. 2	Each	1	-	1
Floor Drains	Each	4	-	4
Concrete Superstructure	Cu. Yd.	34.2	-	34.2
Bridge Deck Grooving	Sq. Yd.	258	-	258
Protective Coat	Sq. Yd.	386	-	386
Concrete Wearing Surface, 5"	Sq. Yd.	292	-	292
Precast Prestressed Concrete Deck Beams (11" Depth)	Sq. Ft.	3,236	-	3,236
Furnishing & Erecting Structural Steel	Pound	2,000	-	2,000
Reinforcement Bars, Epoxy Coated	Pound	6,940	-	6,940
Bar Splicers	Each	44	-	44
Silicone Joint Sealer, 1 $\frac{3}{4}$ "	Foot	74	-	74
Structural Repair of Concrete (Depth Greater Than 5 In.)	Sq. Ft.	-	9	9
Structural Repair of Concrete (Depth Equal to or Less Than 5 In.)	Sq. Ft.	-	139	139
Name Plates	Each	1	-	1
Temporary Wall Bracing System	Lump Sum	1	-	1



* Based on the Field Notes From I.D.O.T. Maintenance Engineers, dated September, 2007

NOTES:
 As an alternate to Drilled Holes, the Contractor may request the Fabricator to cast 2" Dia. Semi-Circular Recesses in the side of each Beam adjacent to the Stage Construction Line.
 These Recesses must align to form a hole at the correct location for the Clamping Device Bolts.
 If the Contractor elects to use this Alternate, a Detail of the 2" Dia. Semi-Circular Recesses must be shown on the Shop Drawings.

SHEAR KEY CLAMPING DETAILS AT STAGE CONST. JT.
 Cost included with Precast Prestressed Concrete Deck Beams.
 See Stage Construction Details for traffic lanes.

GENERAL NOTES:

- Plan dimensions and details relative to existing plans are subject to routine variations. The Contractor shall field verify existing dimensions and details affecting new construction and make necessary approved adjustments prior to construction or ordering of materials. Such variations shall not be cause for additional compensation for a change in the scope of work, however, the Contractor will be paid for the quantity actually furnished based upon the unit price bid for the work.
- The Reinforced Concrete Overlay, as specified on the plan details, shall be paid for at the Contract Unit Price Bid per Square Yard for "Concrete Wearing Surface" and pounds for "Reinforcement Bars, Epoxy Coated".
- Reinforcement Bars shall conform to the requirements of ASTM A 706, Grade 60 (IL. Modified). See Special Provisions.
- Reinforcement Bars designated (E) shall be Epoxy Coated.
- The minimum thickness of the Concrete Overlay shall be 5 inches and varies as required to adjust for the new Profile Grade and Beam Camber.
- The Contractor is advised that the existing PPC Deck Beams are in a deteriorated condition with reduced load carrying capacity. It is the Contractor's responsibility to account for the condition of the Beams when developing Construction Procedures for Removal and Replacement of the Superstructure.
- If the Contractor's procedure for existing Beam Removal or Placement of new Beams involves placement of heavy equipment on the new Deck Beams, a detailed procedure shall be submitted to the Engineer for approval. The procedure shall include calculations, sealed by an Illinois Licensed Structural Engineer, verifying the Structural adequacy of the Beams for the Proposed Load.
- Any damage done to the Bridge during Beam removal shall be repaired by the Contractor. Cost is to be included with "Removal of Existing Superstructures".
- Temporary Concrete Barrier shall only be anchored into the Concrete Overlay and not into the Precast Prestressed Concrete Deck Beams.
- All Structural Steel shall be Shop Painted with the Inorganic Zinc Rich Primer per AASHTO M300, Type 1. Cost included with "Furnishing and Erecting Structural Steel".
- No in-stream work will be allowed on this Project.
- Slipforming of the Parapets is not allowed.
- Repair of the abutments and piers shall be completed prior to placement of the new deck beams.

Rev. 7-15-08

FILE NAME = gen_notes.sht	USER NAME = IDDT	DESIGNED - B.N.S.	REVISED -	STATE OF ILLINOIS DEPARTMENT OF TRANSPORTATION	GENERAL NOTES & TOTAL BILL OF MATERIAL HIGGINS ROAD (IL. RTE. 72) OVER SALT CREEK S.N. 016-0504	F.A.P. RTE. 559/341	SECTION 2008-007 B	COUNTY COOK	TOTAL SHEETS 39	SHEET NO. 25	
PLOT SCALE = 1/8" = 1'-0"	CHECKED - B.N.S. / J.C.N.	REVISIED -	SCALE: NONE			SHEET NO. S2 OF S12 SHEETS	STA. TO STA.	FED. ROAD DIST. NO.	ILLINOIS	FED. AID PROJECT	CONTRACT NO. 60D55
PLOT DATE = 4/30/2008	DATE - APRIL 21, 2008	REVISIED -									