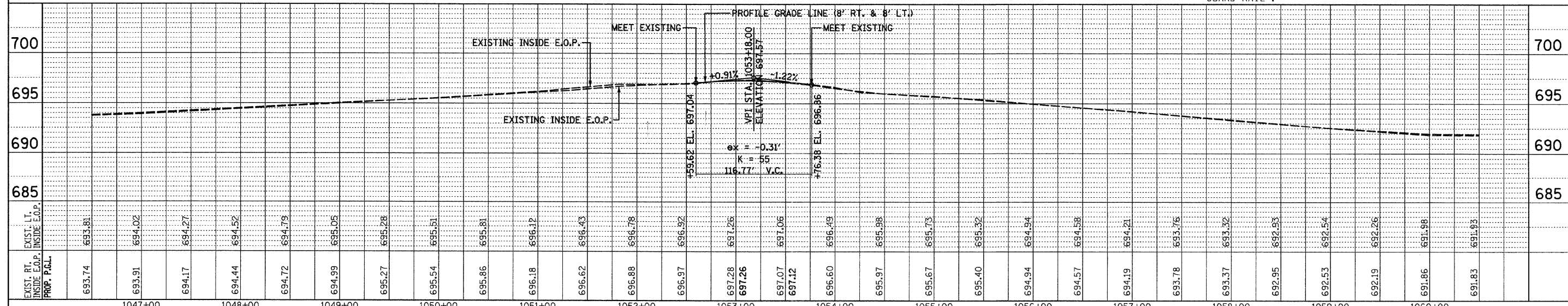


TBM "W" 696.726
BOX CUT ON TOP OF CURB
STA. 1052+63.99, 41.3' LT.

TBM "E" 696.70
BOX CUT ON CONC. BIKE PATH
STA. 1053+44.39, 44.93' RT.

- NOTES:**
- EXISTING MEDIAN STORM SEWER MANHOLES SHALL HAVE STEEL PLATES OVER THEM WHEN THE TEMPORARY PAVEMENT IS PLACED.
 - THE REMOVAL OF THE EXISTING CURB AND GUTTER AND INSTALLATION OF THE PROPOSED CURB AND GUTTER WILL BE PAID FOR AS "COMBINATION CURB AND GUTTER REMOVAL AND REPLACEMENT".
 - THE RE-ATTACHMENT OF THE EXISTING END SHOES TO THE PROPOSED PARAPET WALL SHALL BE INCLUDED IN THE COST OF "REMOVE AND RE-ERECT RAIL ELEMENTS OF EXISTING GUARD RAIL".



FILE NAME = 60055 pp 58.dgn PLOT DATE = 4/30/2008		DESIGNED - S.J.P.	REVISED -	STATE OF ILLINOIS DEPARTMENT OF TRANSPORTATION	EXISTING CONDITIONS AND PROPOSED PLAN AND PROFILE IL. RTE. 58	F.A.P. RTE. 559341	SECTION 2008-007 B	COUNTY COOK	TOTAL SHEETS 39	SHEET NO. 7	
		DRAWN - A.C.S.	REVISED -			SCALE: 1" = 50'			SHEET NO. 1 OF 2 SHEETS		
	CHECKED - E.J.M.	REVISED -	FED. ROAD DIST. NO. 1 ILLINOIS FED. AID PROJECT			CONTRACT NO. 60D55					
	DATE - APRIL 21, 2008	REVISED -									