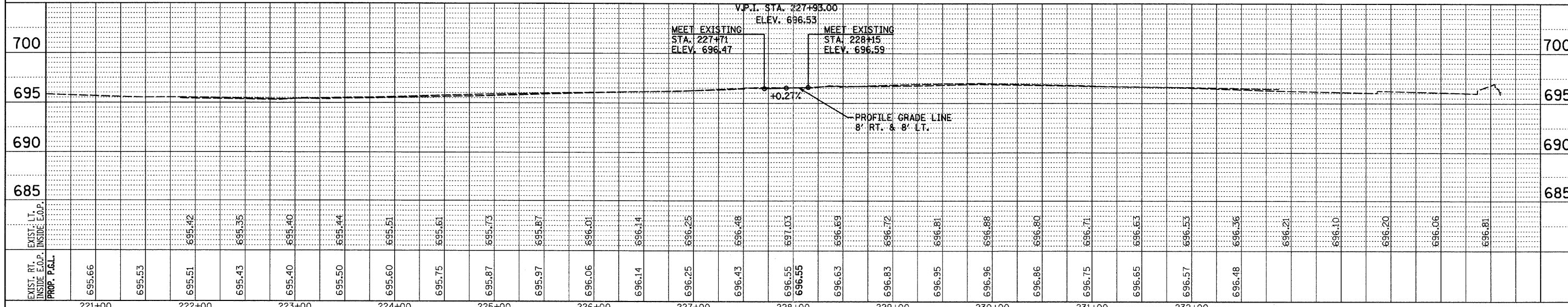


TBM "W" 694.16
 BOX CUT 2' ± E. OF THE W. EDGE OF THE W. APPROACH SLAB OF A BICYCLE BRIDGE THAT RUNS NORTH OF AND PARALLEL TO THE HIGGINS RD. BRIDGE OVER SALT CREEK STA. 226+79.65, 94.81' LT.

TBM "E" 694.266
 BOX CUT 2' ± W. OF THE E. EDGE OF THE E. APPROACH SLAB OF A BICYCLE BRIDGE THAT RUNS NORTH OF AND PARALLEL TO THE HIGGINS RD. BRIDGE OVER SALT CREEK STA. 228+95.40, 95.86' LT.

- NOTES:**
- EXISTING MEDIAN STORM SEWER MANHOLE SHALL HAVE STEEL PLATE OVER IT WHEN THE TEMPORARY PAVEMENT IS PLACED.
 - THE REMOVAL OF THE EXISTING CURB AND GUTTER AND INSTALLATION OF THE PROPOSED CURB AND GUTTER WILL BE PAID FOR AS "COMBINATION CURB AND GUTTER, REMOVAL AND REPLACEMENT".



FILE NAME = 60055 pp 72.dgn		DESIGNED - S.J.P.	REVISED -	STATE OF ILLINOIS DEPARTMENT OF TRANSPORTATION	EXISTING CONDITIONS AND PROPOSED PLAN AND PROFILE IL. RTE. 72	F.A.P. RTE. 559341	SECTION 2008-007 B	COUNTY COOK	TOTAL SHEETS 39	SHEET NO. 8		
PLOT DATE = 4/30/2008		DRAWN - A.C.S.	REVISED -			SCALE: 1" = 50'	SHEET NO. 2 OF 2 SHEETS	STA. 221+00 TO STA. 235+00	CONTRACT NO. 60D55			
		CHECKED - E.J.M.	REVISED -			FED. ROAD DIST. NO. 1 ILLINOIS FED. AID PROJECT						
		DATE - APRIL 21, 2008	REVISED -									