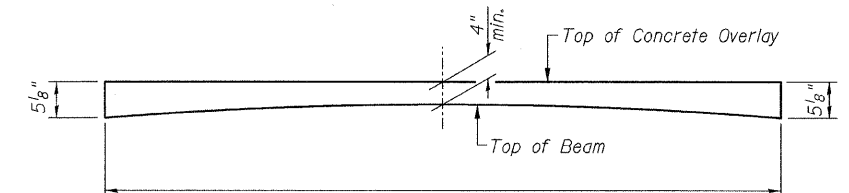
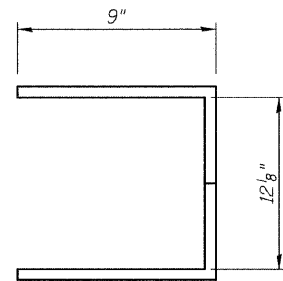


INSIDE ELEVATION OF NORTH PARAPET
(Looking North)

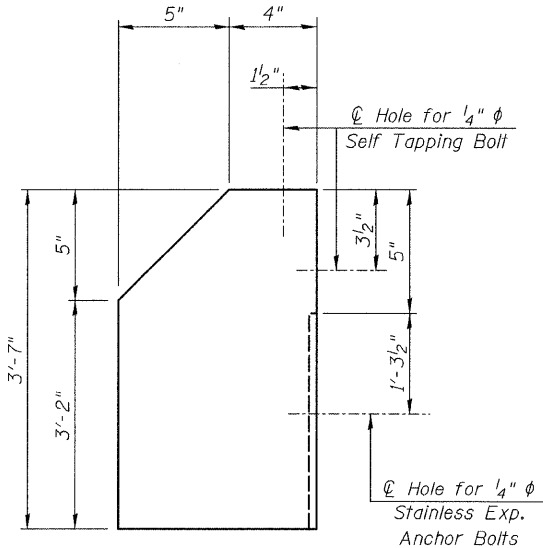
NOTE:
See Sheet S5 for Bill Of Material

MIN. LAP
(Parapet)
#4 bar = 1'-8"
#8 bar = 4'-6"

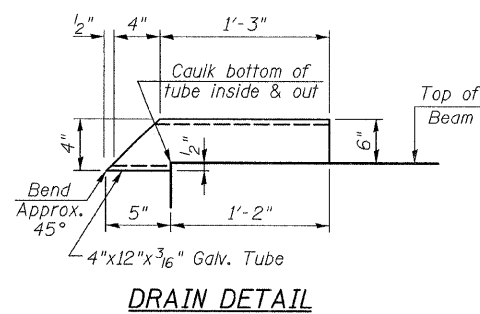
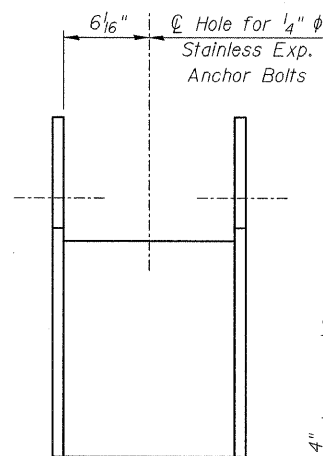
LEGEND:
I.F. = Inside Face
O.F. = Outside Face
E.F. = Each Face



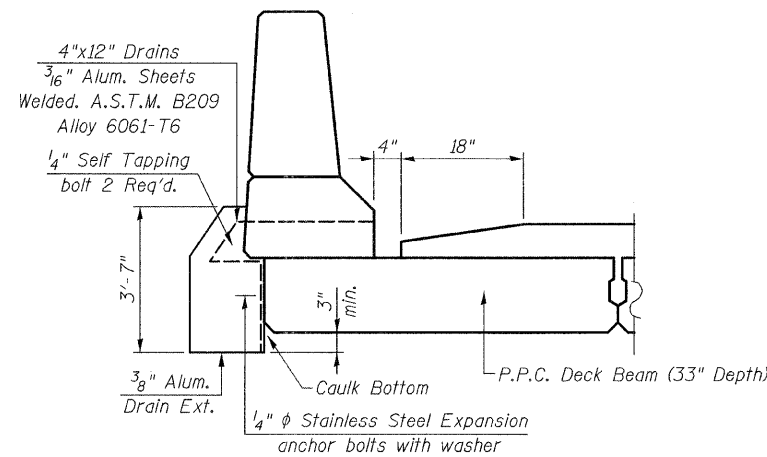
REINFORCED CONCRETE WEARING SURFACE PROFILE
(Proposed)



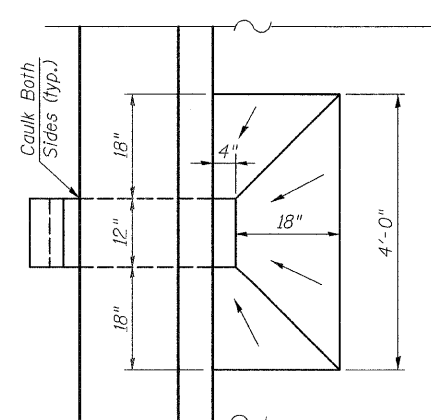
FLOOR DRAIN EXTENSION DETAILS
Cost of Floor Drains and Floor Drain
Extensions are included in the cost
of Floor Drains.



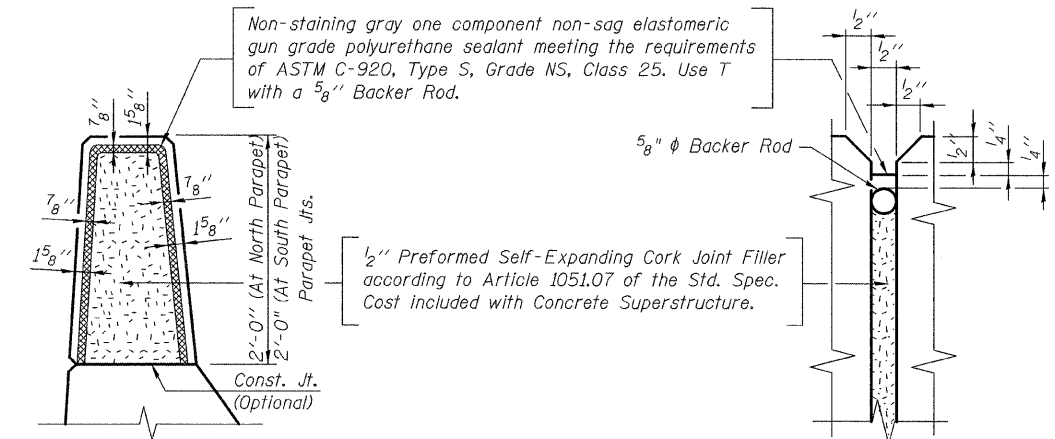
DRAIN DETAIL



**SECTION THRU NORTH PARAPET
SHOWING DRAIN**



**PLAN AT FLOOR DRAINS
AT NORTH PARAPET**



PARAPET JOINT DETAILS

FILE NAME = parapet.north.sht	USER NAME = IDDT	DESIGNED - B.N.S.	REVISED -	STATE OF ILLINOIS DEPARTMENT OF TRANSPORTATION	NORTH PARAPET DETAILS GOLF ROAD (IL. RTE. 58) OVER SALT CREEK S.N. 016-0349			F.A.P. R.T.E. 559/341	SECTION 2008-007 B	COUNTY COOK	TOTAL SHEETS 39	SHEET NO. 17
PLOT SCALE = 1/8" = 1'-0"	CHECKED - B.N.S. / J.C.N.	DATE - JUNE 30, 2008	REVISED -		SCALE: NONE	SHEET NO. S6 OF S12 SHEETS	STA.	TO STA.	FED. ROAD DIST. NO.	ILLINOIS FED. AID PROJECT	CONTRACT NO. 60D55	
PLOT DATE = 6/30/2008												

CR & A
CHRISTIAN-ROGE & ASSOCIATES, INC.
ENGINEERS / PLANNERS / SURVEYORS
211 W. WACKER DRIVE CHICAGO, IL. 60606
PHONE: (312)372-2023 FAX: (312)372-5274