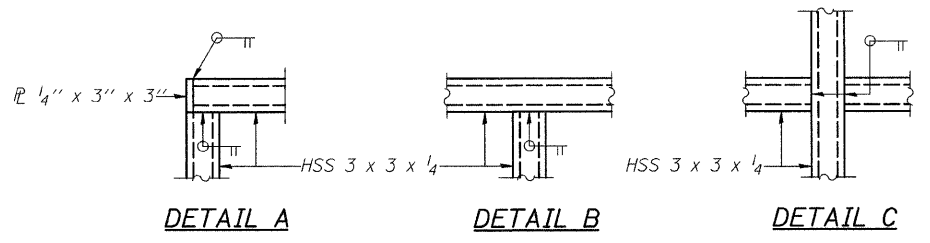


**BICYCLE RAILING**

**BICYCLE RAILING**

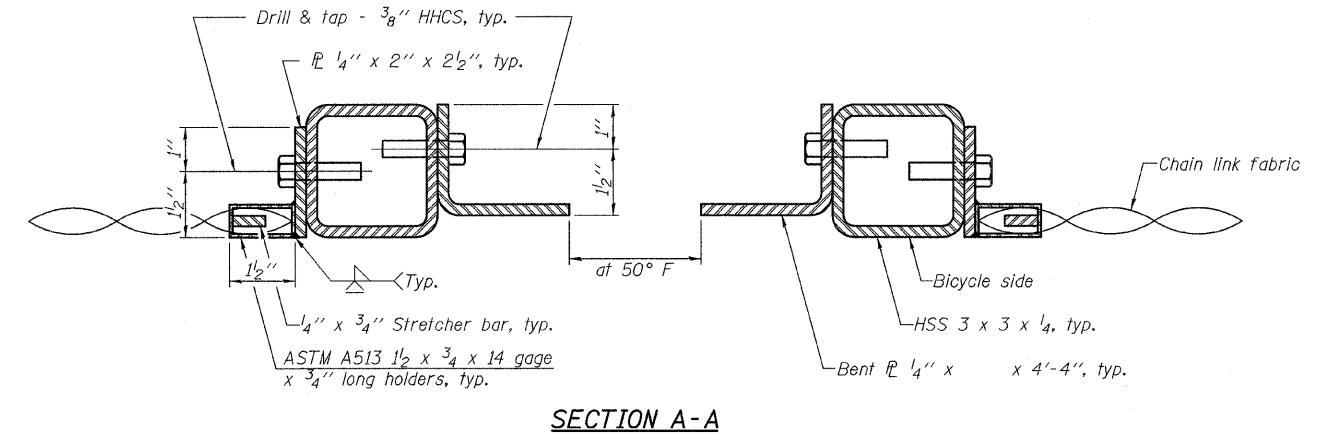


**DETAIL A**

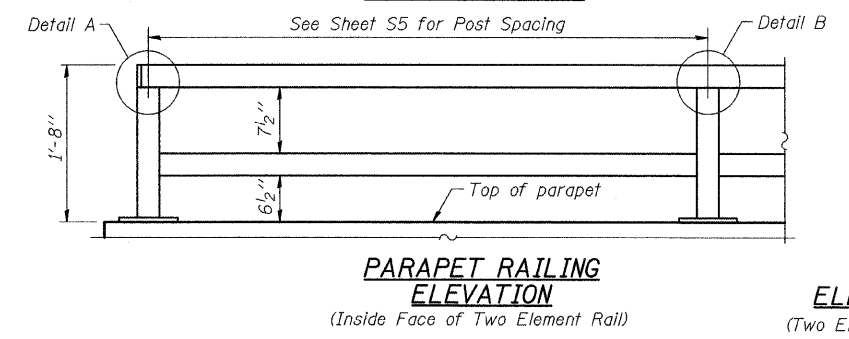
**DETAIL B**

**DETAIL C**

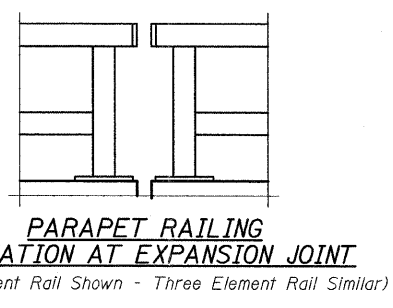
**NOTE:**  
All steel rail elements shall be galvanized according to Article 509.05 of the Standard Specifications.



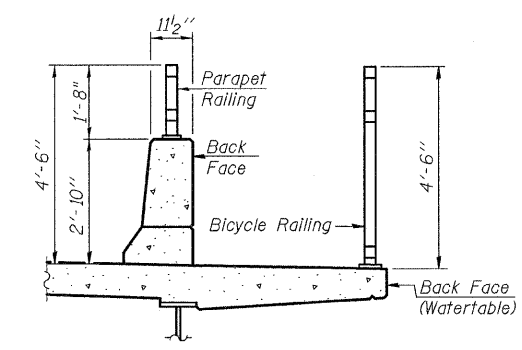
**SECTION A-A**



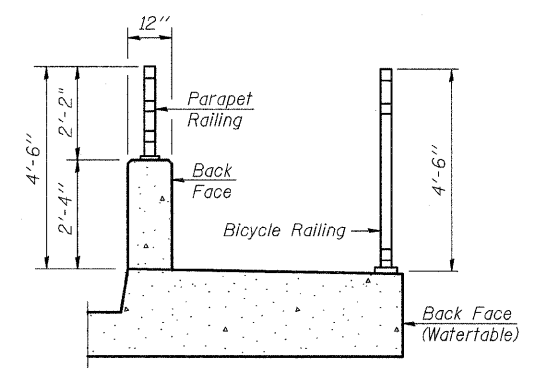
**PARAPET RAILING ELEVATION**  
(Inside Face of Two Element Rail)



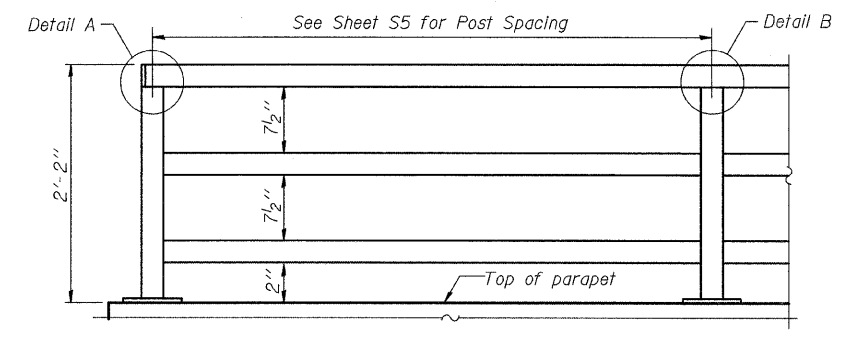
**PARAPET RAILING ELEVATION AT EXPANSION JOINT**  
(Two Element Rail Shown - Three Element Rail Similar)



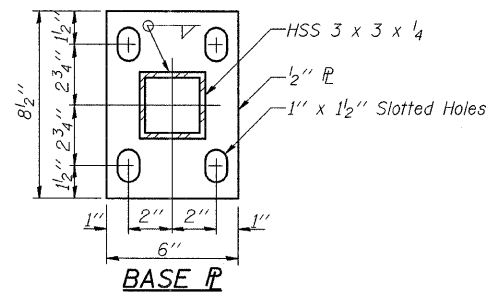
**SECTION THRU DECK**



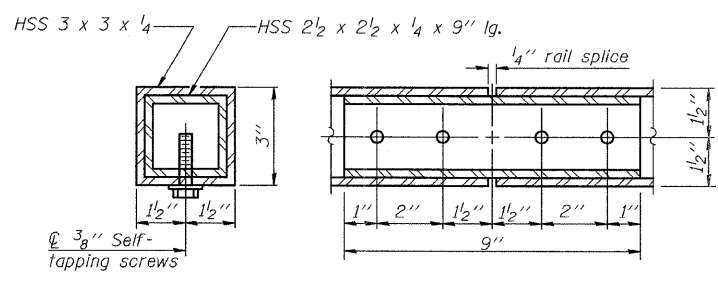
**SECTION THRU SIDEWALK**



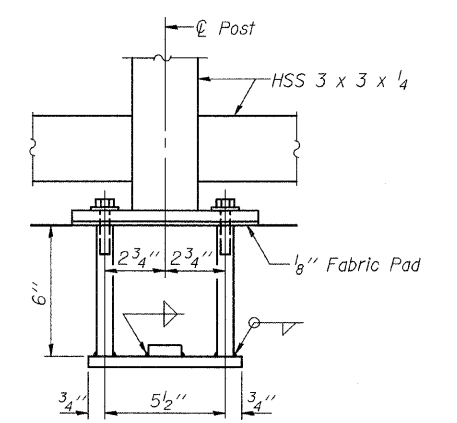
**PARAPET RAILING ELEVATION**  
(Inside Face of Three Element Rail)



**BASE PL**

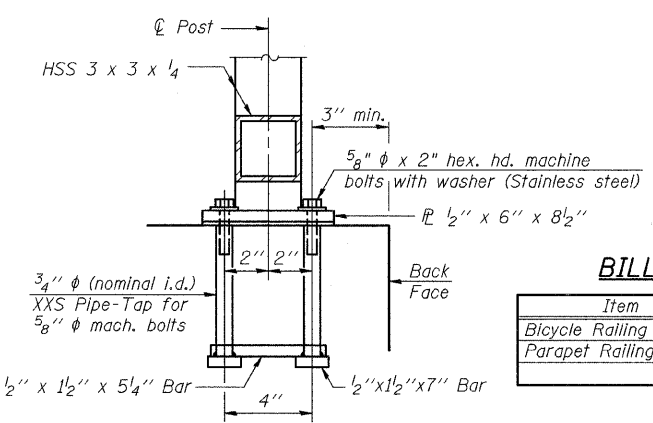


**RAIL SPLICE**



**ANCHOR BOLT DETAILS**

In lieu of the cast-in-place anchor device shown, the Contractor has the option of drilling and setting 5/8"  $\phi$  anchor rods according to Article 509.06 of the Standard Specifications. Embedment shall be according to the manufacturer's specifications.



**BILL OF MATERIAL**

Item	Unit	Quantity
Bicycle Railing	Foot	70
Parapet Railing	Foot	70

R-29 9-3-07 (10'-0" Maximum Post Spacing)

**CHRISTIAN-ROGE & ASSOCIATES, INC.**  
ENGINEERS / PLANNERS / SURVEYORS  
211 W. WACKER DRIVE CHICAGO, IL. 60606  
PHONE: (312)372-2023 FAX: (312)372-5274