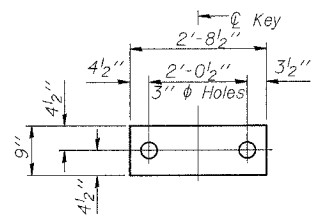


STATE OF ILLINOIS  
DEPARTMENT OF TRANSPORTATION

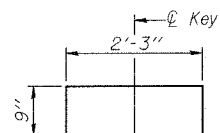
ROUTE NO.	SECTION	COUNTY	FEET	SHEET NO.	SHEET NO. 7
FAP 631	(11N-1 B)	WILL	32	22	14 SHEETS
FED. ROAD DIST. NO. 7	ILLINOIS	FED. AID PROJECT			

Contract # 60D85



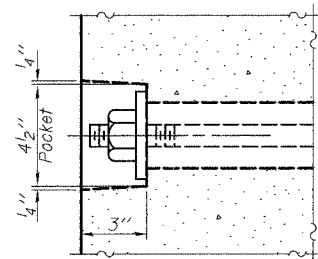
**FABRIC BEARING PAD**  
(Interior)  
(4-required)

**FIXED**

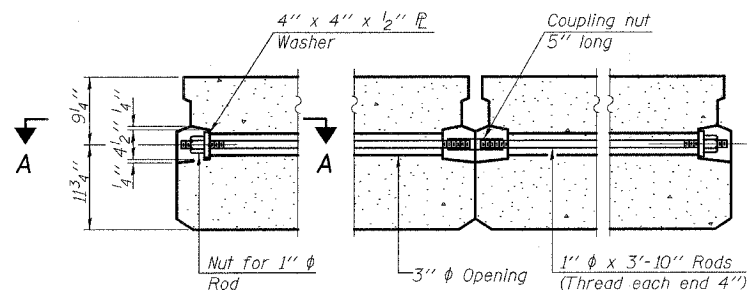


**FABRIC BEARING PAD**  
(Interior)  
(4-required)

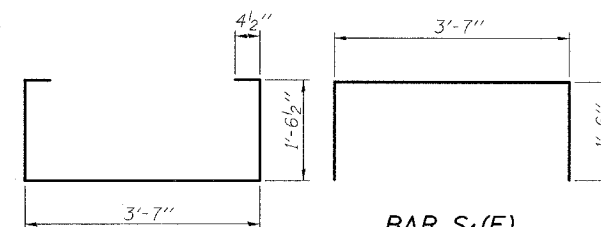
**EXPANSION**



**SECTION A-A**

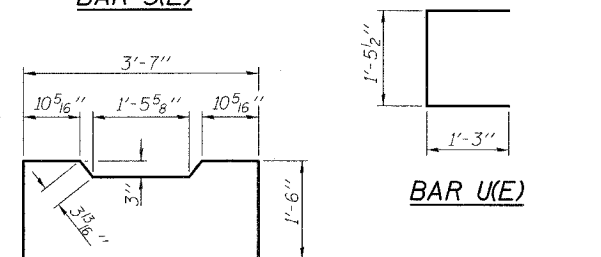


**TYPICAL TRANSVERSE TIE ASSEMBLY**

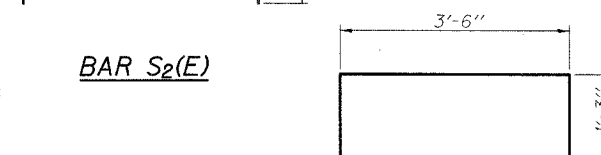


**BAR S<sub>1</sub>(E)**

**BAR S(E)**

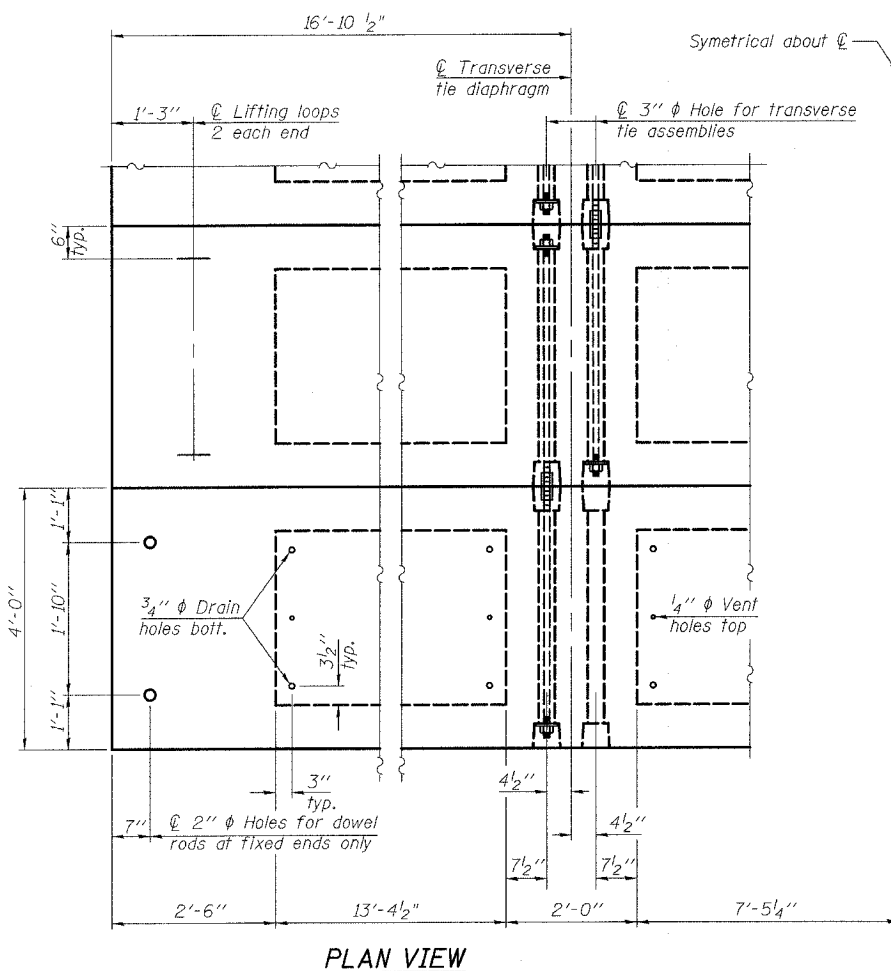


**BAR U(E)**



**BAR S<sub>2</sub>(E)**

**BAR U<sub>1</sub>(E)**



**PLAN VIEW**

Note: Connect beams in pairs with the transverse tie configuration shown.

DESIGNED	B. Sauter
CHECKED	E. Mroczek
DRAWN	R. Danley
CHECKED	B. Sauter



**Ciorba Group, Inc.**  
CONSULTING ENGINEERS  
5507 North Cumberland Avenue, Suite 402 Chicago, Illinois 60656  
Tel. 773.775.4009 Fax 773.775.4014 Email chicago@ciorba.com

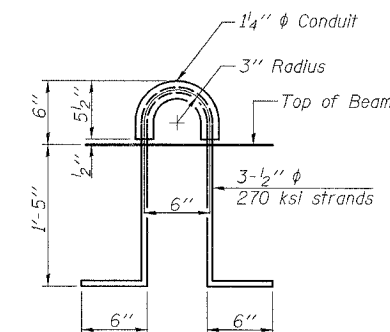
PD-2148-0D

8-29-07

**NOTES**

- Prestressing steel shall be uncoated high strength, low relaxation 7-wire strand, Grade 270. The nominal diameter shall be 1/2" and the nominal cross-sectional area shall be 0.153 sq. in. The 1" diameter rods in the transverse tie assembly shall be tightened to a snug fit and the threads set. Pockets on exterior faces of bridge shall be filled with grout after transverse tie assembly is in place.
- Reinforcement bars shall conform to ASTM A 706 (IL MOD), Grade 60. (See Special Provisions)
- Two 1/8" fabric adjusting shims of the dimensions of the exterior bearing pad shall be provided for each bearing pad location.
- Minimum 2 1/2" diameter lifting pin shall be used to engage the lifting loops during handling.
- Corrosion Inhibitor, per Article 1020.05(b)(12) and 1021.06 of the Standard Specifications, shall be used in the concrete for precast prestressed concrete deck beams.
- Compressive strength of prestressed concrete, f'c, shall be 6000 psi.
- Compressive strength of prestressed concrete at release, f'ci, shall be 5000 psi.

**LIFTING LOOP DETAIL**



**BILL OF MATERIAL**

Precast Prestressed Conc. Deck Bms. (21" depth)	Sq. Ft.	405
---	---------	-----

**21" X 48" PPC DECK BEAM  
DETAILS NO. 2  
FAP 631 (ILL. RTE. 102)  
OVER FORKED CREEK OVERFLOW  
SECTION III N-1 B  
WILL COUNTY  
STA. 821+12.20  
S.N. 099-0169**