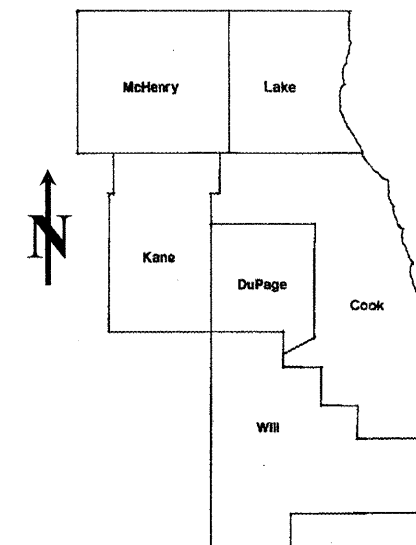


ROUTE	SECTION	COUNTY	TOTAL SHEETS	SHEET NUMBER
VARIOUS	2008-048 PP	COOK & WILL	13	1

STATE OF ILLINOIS
DEPARTMENT OF TRANSPORTATION
DIVISION OF HIGHWAYS
DISTRICT ONE
PROPOSED HIGHWAY PLANS

CONTRACT NO. 60E97

D-91-554-08



LOCATION OF IMPROVEMENT INDICATED THUS:

FOR INDEX OF SHEETS SEE SHEET 2

VARIOUS ROUTES
 SECTION: 2008-048 PP
 VARIOUS INTERSTATE RAMPS
 PAVEMENT PATCHING
 COOK & WILL COUNTIES
 C-91-554-08

CONTRACT NO. 60E97

STATE OF ILLINOIS
DEPARTMENT OF TRANSPORTATION
DIVISION OF HIGHWAYS

SUBMITTED: June 20, 2008

Diana M. O'Keefe

DEPUTY DIRECTOR OF HIGHWAYS, REGION ENGINEER

June 27, 2008

Eric E. Harny

INTERIM ENGINEER OF DESIGN AND ENVIRONMENT

June 27, 2008

Christine M. Reed

DIRECTOR, DIVISION OF HIGHWAYS

PRINTED BY THE AUTHORITY
OF THE STATE OF ILLINOIS

J.U.L.I.E.: JOINT UTILITY LOCATION
INFORMATION FOR EXCAVATION
(312) 744-7000

DISTRICT ONE - DESIGN - PLAN PREPARATION ENGINEER:
 KEN ENG / (847) 705-4247

GENERAL NOTES

BEFORE STARTING ANY EXCAVATION, THE CONTRACTOR SHALL CALL "JULIE" AT (800) 892-0123 OR 811 FOR FIELD LOCATIONS OF BURIED ELECTRIC, TELEPHONE AND GAS FACILITIES. (48 HOUR NOTIFICATION REQUIRED)

BEFORE STARTING ANY EXCAVATION, THE CONTRACTOR SHALL CALL "C.U.A.N." (CHICAGO UTILITY ALERT NETWORK) AT (312) 744-7000 FOR FIELD LOCATIONS OF BURIED ELECTRIC, TELEPHONE AND GAS UTILITIES (48 HOUR NOTIFICATION IS REQUIRED).

THE CONTRACTOR WILL NOT BE ALLOWED TO SET UP A YARD OR FIELD OFFICE ON STATE (OR TOLLWAY) PROPERTY WITHOUT WRITTEN PERMISSION FROM THE DEPARTMENT (OR ISTHA)

WHEN ARTIFICIAL LIGHTING IS UTILIZED IN NIGHT OPERATIONS, THE CONTRACTOR SHALL EXERCISE THE UTMOST PRECAUTIONS IN PREVENTING ADVERSE VISABILITY TO THE MOTORING PUBLIC AND ADJOINING RESIDENTIAL AREAS.

ANY PAVEMENT MARKINGS AND RAISED REFLECTIVE PAVEMENT MARKERS OBLITERATED BY MILLING AND RESURFACING OPERATIONS ON SIDE STREETS AND ENTRANCES SHALL BE REPLACED AND PAID FOR IN KIND.

BEFORE BEGINNING ANY WORK, THE CONTRACTOR SHALL RETAIN AND RECORD FOR FUTURE REFERENCE, ALL EXISTING PAVEMENT MARKING LINES (AND RAISED REFLECTIVE PAVEMENT MARKERS) IN ORDER THAT THESE LOCATIONS CAN BE RE-ESTABLISHED FOR STRIPING. EXACT LOCATIONS OF ALL PAVEMENT MARKINGS SHALL BE AS DIRECTED BY THE ENGINEER.

ALL PAVEMENT PATCHING LOCATIONS WILL BE DETERMINED IN THE FIELD BY THE ENGINEER.

THE CONTRACTOR SHALL CONTACT THE DISTRICT ONE TRAFFIC CONTROL SUPERVISOR AT (847) 705-4470 A MINIMUM OF 72 HOURS IN ADVANCE OF BEGINNING WORK.

THE ENGINEER SHALL CONTACT MS. PATRICE HARRIS, AREA TRAFFIC FIELD ENGINEER AT (708) 597-9800 MINIMUM OF TWO (2) WEEKS PRIOR TO PLACEMENT OF PERMANENT PAVEMENT MARKINGS.

THE EXISTING ROADWAY TYPICAL SECTION IS ASSUMED TO HAVE A 3 INCH HOT-MIX ASPHALT OVERLAY ON TOP OF A TEN INCH CONCRETE BASE.

INDEX OF SHEETS

<u>SHEET NO.</u>	<u>DESCRIPTION</u>
1	TITLE SHEET
2	INDEX OF SHEETS, STATE STANDARDS AND GENERAL NOTES
3	SUMMARY OF QUANTITIES
4	GENERAL LOCATION MAP
5-6	PATCHING SCHEDULE
7	BUTT JOINT AND HMA TAPER DETAILS
8	ENTRANCE RAMP CLOSURE DETAILS
9	FREEWAY SINGLE & MULTI-LANE WEAVE
10-11	MULTI-LANE FREEWAY PAVEMENT MARKING DETAILS
12	FREEWAY SHOULDER CLOSURES AND PARTIAL RAMP CLOSURES
13	SIGNING FOR FLAGGING OPERATIONS AT WORK ZONE OPERATIONS

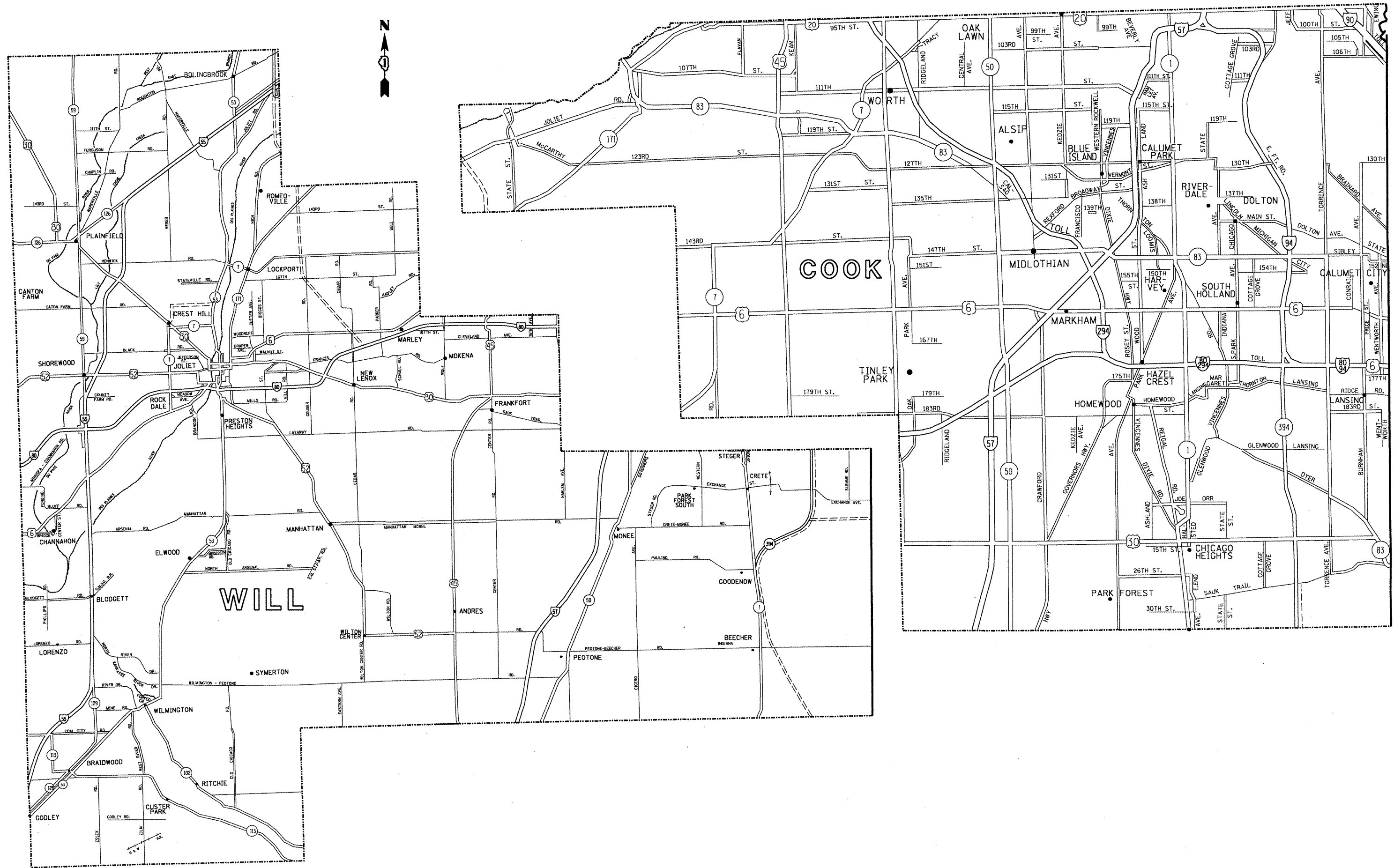
STATE STANDARDS

<u>STANDARD NO.</u>	<u>DESCRIPTION</u>
000001-05	TYPICAL SYMBOLS, ABBREVIATIONS AND PATTERNS
442201-03	CLASS C AND D PATCHES
701400-02	APPROACH TO LANE CLOSURE, FREEWAY/EXPRESSWAY
701401-04	LANE CLOSURE, FREEWAY/EXPRESSWAY
701901	TRAFFIC CONTROL DEVICES

HOT-MIX ASPHALT MIXTURE REQUIREMENTS

	MIXTURE TYPE	AC TYPE	AIR VOIDS (%)
ROADWAY	HOT-MIX ASPHALT SURFACE COURSE, MIX "D", N90 (IL 9.5 MM), 2"	PG 64-22	4% @ 90 GYR
PATCHES	CLASS D PATCHES, (HMA BINDER IL-25.0 MM)	PG 64-22	4% @ 105 GYR
	NOTE: TOP 2 INCHES OF PATCHES SHALL BE SAME AS SURFACE COURSE:		
	HOT-MIX ASPHALT SURFACE COURSE, MIX "D", N90 (IL 9.5 MM), 2"	PG 64-22	4% @ 90 GYR

THE UNIT WEIGHT USED TO CALCULATE ALL HOT-MIX ASPHALT SURFACE MIXTURE QUANTITIES IS 112 LBS/SY/IN.



**STATE OF ILLINOIS
DEPARTMENT OF TRANSPORTATION**

GENERAL LOCATION MAP - COOK & WILL COUNTIES

FILE NAME =
c:\projects\td136508\design_aa.dgn

USER NAME = wilgreendp
PLOT SCALE = 100.0000' / IN.
PLOT DATE = 6/25/2008

DESIGNED -	REVISED -
DRAWN -	REVISED -
CHECKED -	REVISED -
DATE -	REVISED -

SCALE: SHEET NO. OF SHEETS STA. TO STA.

F.A. RTE.	SECTION	COUNTY	TOTAL SHEETS	SHEET NO.
VAR.	2008-048 PP	COOK & WILL	13	4
CONTRACT NO. 60E97				
FED. ROAD DIST. NO. (ILLINOIS) FED. AID PROJECT				

LOCATIONS FOR INTERSTATE 94 (BISHOP FORD EXPY)	REPAIR LENGTH (FT)	REPAIR WIDTH (FT)	REPAIR AREA (SF)	REPAIR AREA (SY)	SURFACE TYPE	REPAIR WORK
103RD ST RAMP FROM EB I-94 @ OLIVE HARVEY COLLEGE	6	12	72	8	HMA	HMA SURF REM & RESURF
	4	12	48	5	PCC	CLASS D PATCH
	4	12	48	5	PCC	CLASS D PATCH
	10	12	120	13	PCC	CLASS D PATCH
NB I-94 RAMP TO 103RD STREET	73	15	1095	122	PCC	CLASS D PATCH
	10	15	150	17	PCC	CLASS D PATCH
SPLIT RAMP 103RD STREET TO EAST	4	12	48	5	PCC	CLASS D PATCH
	12	9	108	12	PCC	CLASS D PATCH
WEST 103RD STREET TO NB FEEDER	16	12	192	21	PCC	CLASS D PATCH
SB FEEDER TO NB I-94	20	5	100	11	PCC	CLASS D PATCH
	4	12	48	5	PCC	CLASS D PATCH
SB FEEDER TO 103RD STREET	6	12	72	8	PCC	CLASS D PATCH
	20	12	240	27	PCC	CLASS D PATCH
	4	12	48	5	PCC	CLASS D PATCH
	4	12	48	5	PCC	CLASS D PATCH
	4	12	48	5	PCC	CLASS D PATCH
	4	12	48	5	PCC	CLASS D PATCH
EB 103RD STREET TO SB FEEDER	5	12	60	7	PCC	CLASS D PATCH
	4	12	48	5	PCC	CLASS D PATCH
	12	30	360	40	PCC	CLASS D PATCH
NB 130TH STREET TO WEST 130TH STREET	4	12	48	5	PCC	CLASS D PATCH
SB EXIT TO BEAUBIEN WOODS	10	12	120	13	PCC	CLASS D PATCH
	4	12	48	5	PCC	CLASS D PATCH
BEAUBIEN WOODS NB ENTRANCE TO I-94	4	12	48	5	PCC	CLASS D PATCH
	4	12	48	5	PCC	CLASS D PATCH
	4	12	48	5	PCC	CLASS D PATCH
	4	12	48	5	PCC	CLASS D PATCH
	4	12	48	5	PCC	CLASS D PATCH
	4	12	48	5	PCC	CLASS D PATCH
	4	12	48	5	PCC	CLASS D PATCH
	4	12	48	5	PCC	CLASS D PATCH
	7	12	84	9	PCC	CLASS D PATCH
WB 103RD ST TO SB I-94	10	12	120	13	PCC	CLASS D PATCH
SB I-94 TO DOLTON EAST	4	12	48	5	PCC	CLASS D PATCH
EAST DOLTON TO NB I-94	5	12	60	7	PCC	CLASS D PATCH
MICHIGAN CITY ROAD TO SB I-94	5	12	60	7	PCC	CLASS D PATCH

LOCATIONS FOR INTERSTATE 57 AND INTERSTATE 80	REPAIR LENGTH (FT)	REPAIR WIDTH (FT)	REPAIR AREA (SF)	REPAIR AREA (SY)	SURFACE TYPE	REPAIR WORK
WB I-80 KEDZIE AVENUE RAMP	4	12	48	5	PCC	CLASS D PATCH
	4	12	48	5	HMA	HMA SURF REM & RESURF
I-57 NB RAMP TO EB I-80	4	12	48	5	HMA	HMA SURF REM & RESURF
WB I-80 RAMP TO SB I-57	4	12	48	5	HMA	HMA SURF REM & RESURF
WB I-80 RAMP TO NB I-57	4	12	48	5	HMA	HMA SURF REM & RESURF
NB I-57 TO WB I-80	4	12	48	5	HMA	HMA SURF REM & RESURF
SB I-57 RAMP TO WB I-80	4	12	48	5	HMA	HMA SURF REM & RESURF
SB HARLEM AVE RAMP TO EB I-80	4	12	48	5	HMA	HMA SURF REM & RESURF
	4	12	48	5	HMA	HMA SURF REM & RESURF
HALSTED STREET SB RAMP TO I-57	12	20	240	27	HMA	HMA SURF REM & RESURF

LOCATIONS FOR INTERSTATE 55 (WILL COUNTY)	REPAIR LENGTH (FT)	REPAIR WIDTH (FT)	REPAIR AREA (SF)	REPAIR AREA (SY)	SURFACE TYPE	REPAIR WORK
SB I-55 TO ARSENAL RD CLOVERLEAF	12	16	192	21	HMA	HMA SURF REM & RESURF
	8	16	128	14	HMA	HMA SURF REM & RESURF
	75	16	1200	133	HMA	HMA SURF REM & RESURF
	6	16	96	11	HMA	HMA SURF REM & RESURF
ARSENAL RD TO NB I-55 CLOVERLEAF	4	16	64	7	HMA	HMA SURF REM & RESURF
	4	16	64	7	HMA	HMA SURF REM & RESURF
	4	16	64	7	HMA	HMA SURF REM & RESURF
	4	16	64	7	HMA	HMA SURF REM & RESURF
	4	16	64	7	HMA	HMA SURF REM & RESURF
	22	16	352	39	HMA	HMA SURF REM & RESURF
	726	16	11616	1291	HMA	HMA SURF REM & RESURF
NB I-55 TO ARSENAL RD LONGARM RAMP	9	16	144	16	HMA	HMA SURF REM & RESURF
SB I-55 RAMP TO IL 129	7	16	112	12	HMA	HMA SURF REM & RESURF
	7	13	91	10	HMA	HMA SURF REM & RESURF
NB WEBER RD RAMP TO NB I-55	64	12	768	85	HMA	HMA SURF REM & RESURF
	21	12	252	28	HMA	HMA SURF REM & RESURF
NB IL 53 RAMP TO NB I-55	16	12	192	21	HMA	HMA SURF REM & RESURF
SB IL 53 RAMP TO SB I-55	12	12	144	16	HMA	HMA SURF REM & RESURF
NB LEMONT RD RAMP TO NB I-55	6	16	96	11	HMA	HMA SURF REM & RESURF
NB IL 83 RAMP TO NB I-55	6	16	96	11	HMA	HMA SURF REM & RESURF
NB I-55 RAMP TO SB COUNTY LINE RD	6	16	96	11	HMA	HMA SURF REM & RESURF
NB COUNTY LINE RD RAMP TO NB I-55	6	16	96	11	HMA	HMA SURF REM & RESURF

FILE NAME = c:\projects\dl36508\design_aa.dgn
 USER NAME = wilgreendp
 PLOT SCALE = 100.0000' / IN.
 PLOT DATE = 6/25/2008

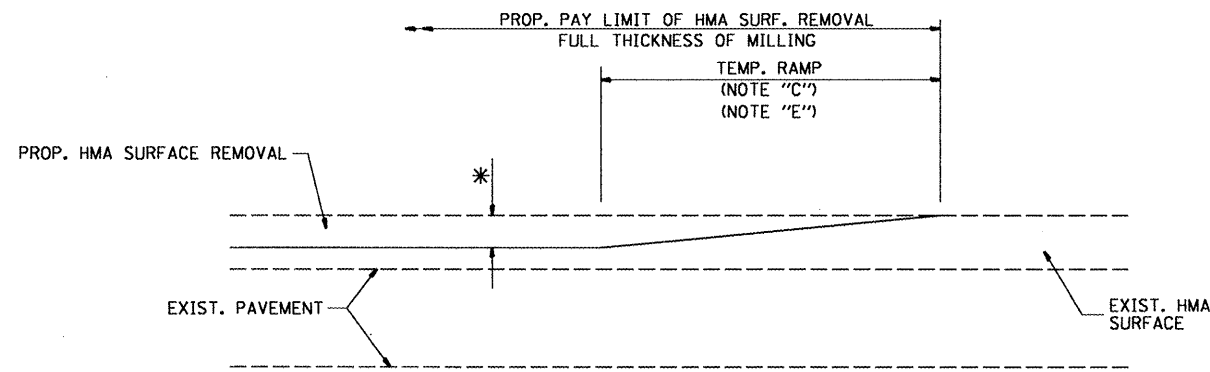
DESIGNED -
 DRAWN -
 CHECKED -
 DATE -
 REVISED -
 REVISED -
 REVISED -
 REVISED -

**STATE OF ILLINOIS
 DEPARTMENT OF TRANSPORTATION**

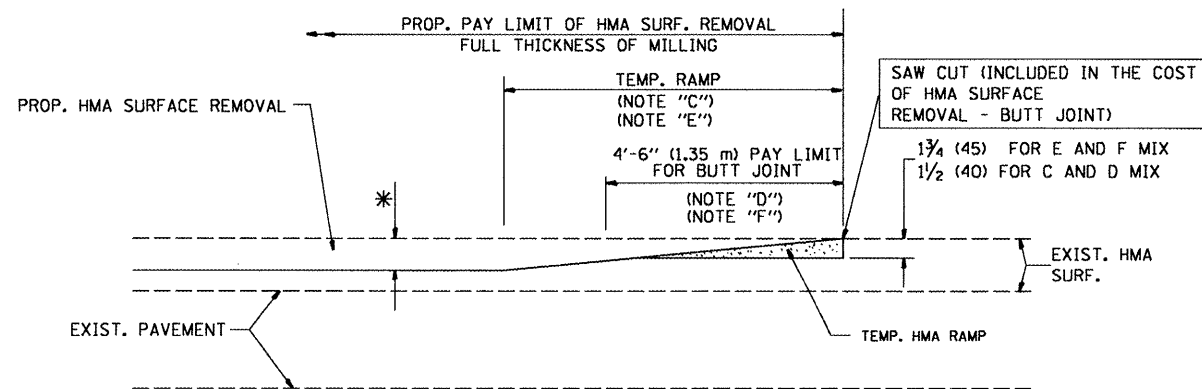
PATCHING SCHEDULE

SCALE: SHEET NO. OF SHEETS STA. TO STA.

F.A. RTE.	SECTION	COUNTY	TOTAL SHEETS	SHEET NO.
VAR.	2008-048 PP	COOK & WILL	13	6
FED. ROAD DIST. NO. ILLINOIS FED. AID PROJECT			CONTRACT NO. 60E97	

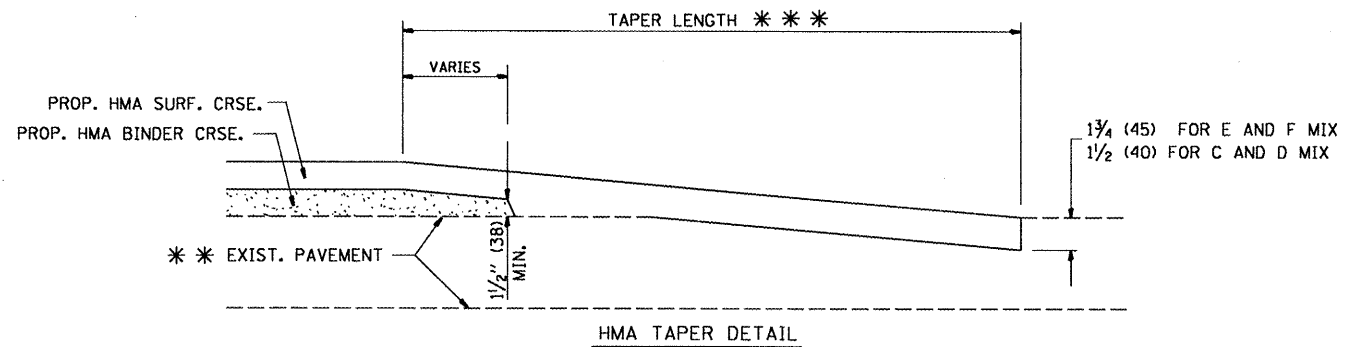
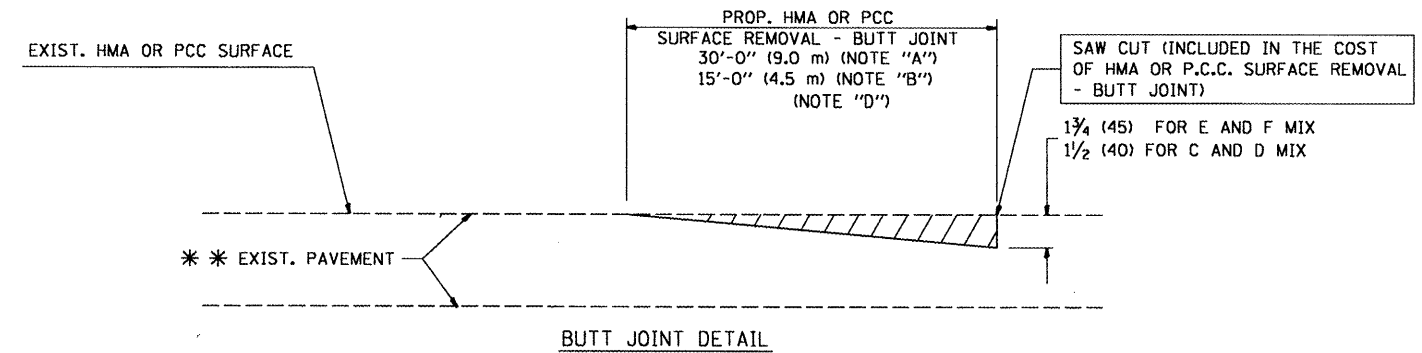


OPTION 1



OPTION 2

TYPICAL TEMPORARY RAMP



TYPICAL BUTT JOINT AND HMA TAPER FOR RESURFACING ONLY

*** PC CONCRETE, HMA OR HMA RESURFACED PAVEMENT.

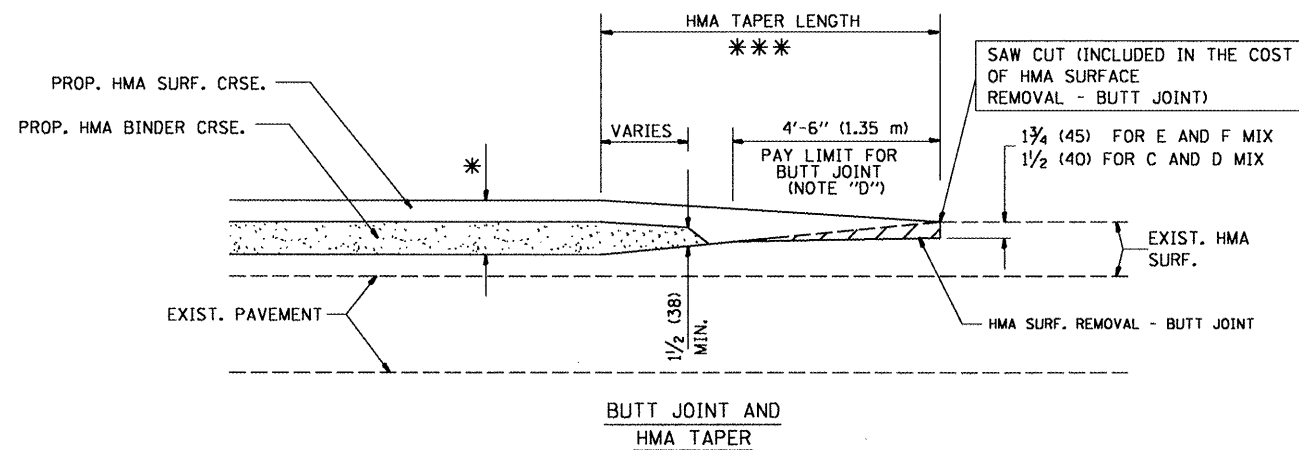
NOTES

- A: MAINLINE ROADWAYS AND MAJOR SIDE ROADS.
 - B: MINOR SIDE ROADS.
 - C: THE TEMP. RAMP SHALL BE CONSTRUCTED IMMEDIATELY UPON REMOVAL OF THE EXISTING HMA SURFACE.
 - D: THE BUTT JOINT SHALL BE CONSTRUCTED IMMEDIATELY PRIOR TO PLACING THE PROPOSED HMA COURSES.
 - E: TAPER THE TEMP. RAMP AT A RATE OF 3'-0" (900 mm) PER 1 INCH (25 mm) OF MILLING THICKNESS.
 - F: INSTALLATION AND REMOVAL OF THE 4'-6" (1.35 m) TEMP. RAMP IS INCLUDED IN COST OF HMA SURFACE REMOVAL - BUTT JOINT
 - G: SEE ARTICLE 406.08 AND 406.14 OF THE STANDARD SPECIFICATIONS FOR "HMA AND/OR PCC SURFACE REMOVAL, BUTT JOINT".
- * SEE TYPICAL SECTIONS FOR MILLING THICKNESS.
- *** 20'-0" (6.1 m) PER 1 (25) RESURFACING (NOTE "A")
 10'-0" (3.0 m) PER 1 (25) RESURFACING (NOTE "B")

BASIS OF PAYMENT:

THE BUTT JOINT WILL BE PAID FOR AT THE CONTRACT UNIT PRICE PER SQUARE YARD (SQUARE METER) FOR "HOT-MIX ASPHALT SURFACE REMOVAL - BUTT JOINT" OR FOR "PORTLAND CEMENT CONCRETE SURFACE REMOVAL - BUTT JOINT".

ALL DIMENSIONS ARE IN INCHES (MILLIMETERS) UNLESS OTHERWISE SHOWN.



TYPICAL BUTT JOINT AND HMA TAPER FOR MILLING AND RESURFACING

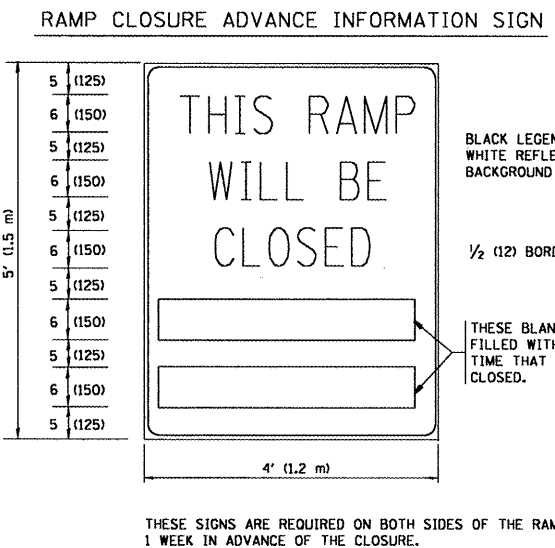
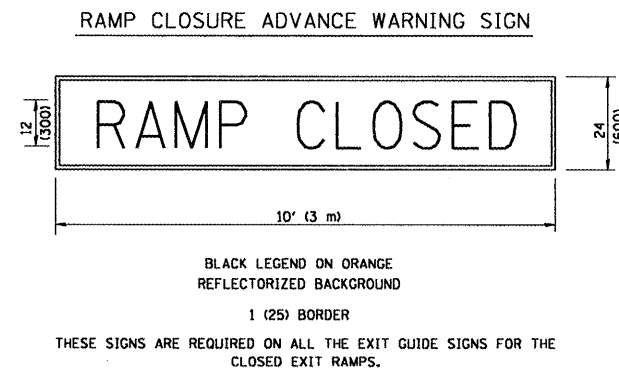
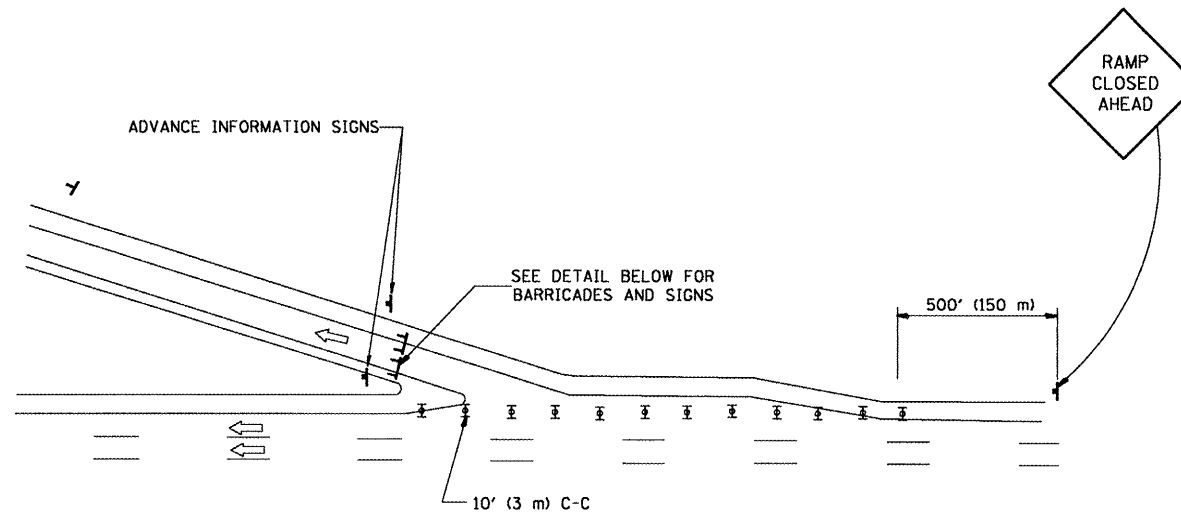
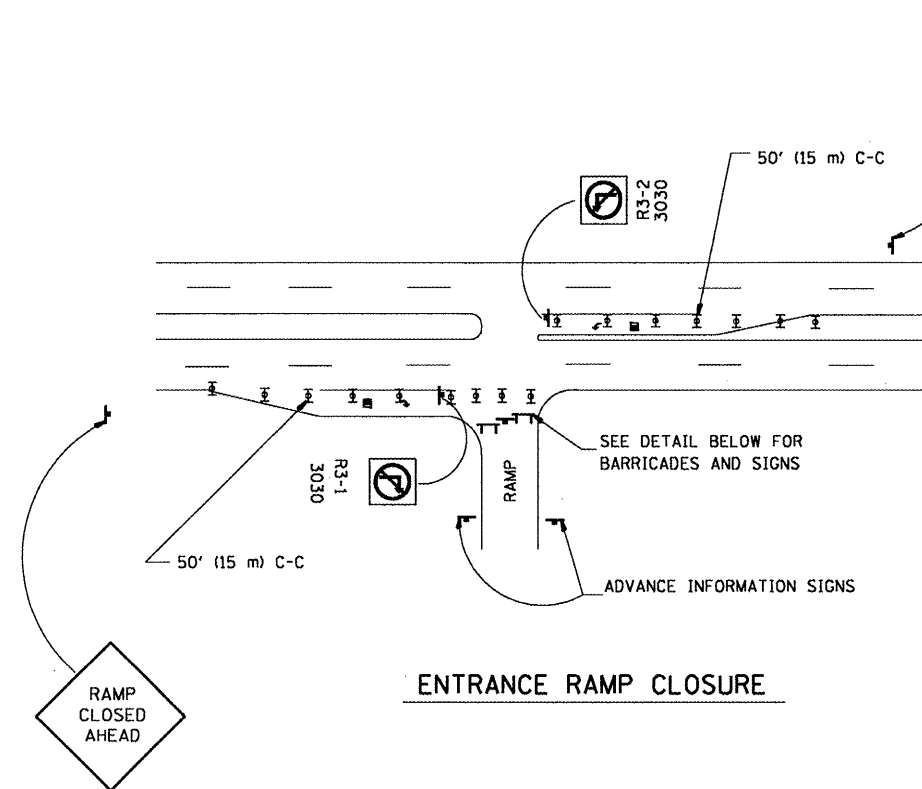
**STATE OF ILLINOIS
DEPARTMENT OF TRANSPORTATION**

**BUTT JOINT AND
HMA TAPER DETAILS**

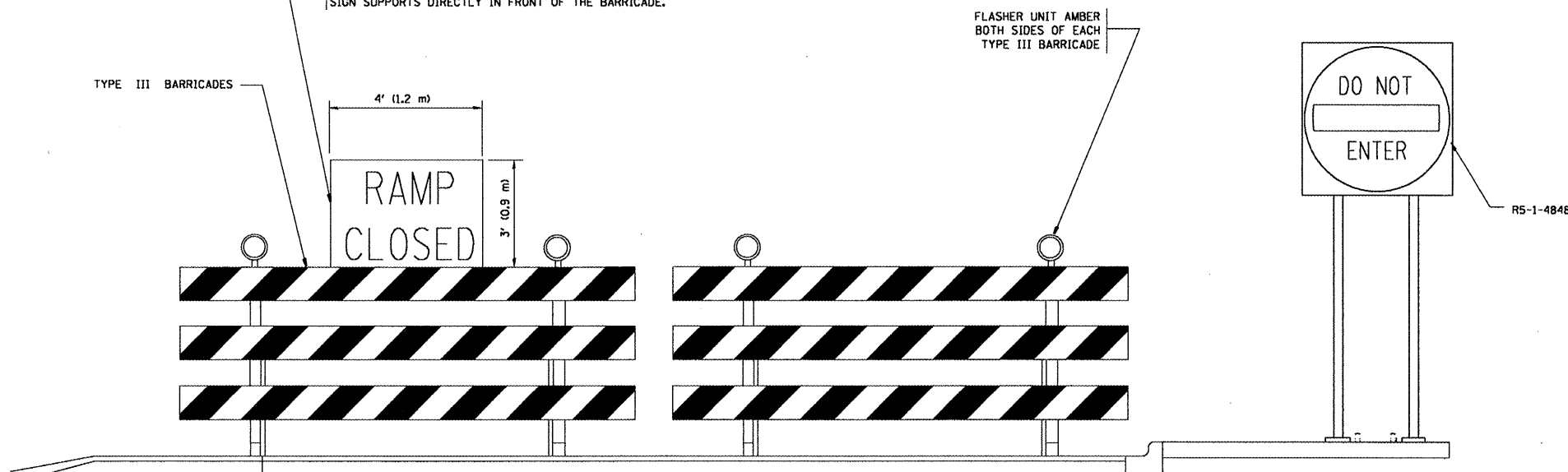
FILE NAME =	USER NAME = smithkl	DESIGNED - M. DE YONG	REVISED - R. SHAH 10-25-94
DETAILS\bd32.dgn		DRAWN -	REVISED - A. ABBAS 03-21-97
PLOT SCALE = 99.9998' / IN.		CHECKED -	REVISED - M. GOMEZ 04-06-01
PLOT DATE = 6/24/2008		DATE - 06-13-90	REVISED - R. BORO 01-01-07

SCALE: NONE	SHEET NO. 1 OF 1 SHEETS	STA.	TO STA.
-------------	-------------------------	------	---------

F.A. RTE.	SECTION	COUNTY	TOTAL SHEETS	SHEET NO.
VAR.	2008-048 PP	COOK & WILL	13	7
BD400-05 BD32		CONTRACT NO. 60E97		
FED. ROAD DIST. NO. 1 ILLINOIS FED. AID PROJECT				



THE "RAMP CLOSED" SIGN SHALL BE B/W WITH 8 (200) CAPS. IF A TYPE III BARRICADE WITH AN ATTACHED SIGN PANEL WHICH MEETS NCHRP 350 IS NOT AVAILABLE, THE SIGNS MAY BE MOUNTED ON NCHRP 350 TEMPORARY SIGN SUPPORTS DIRECTLY IN FRONT OF THE BARRICADE.



SYMBOLS

- ▬ TYPE II BARRICADE, DRUM OR VERTICAL BARRICADE WITH STEADY BURN MONO-DIRECTIONAL LIGHT
- ▬ TYPE III BARRICADE WITH FLASHING LIGHT

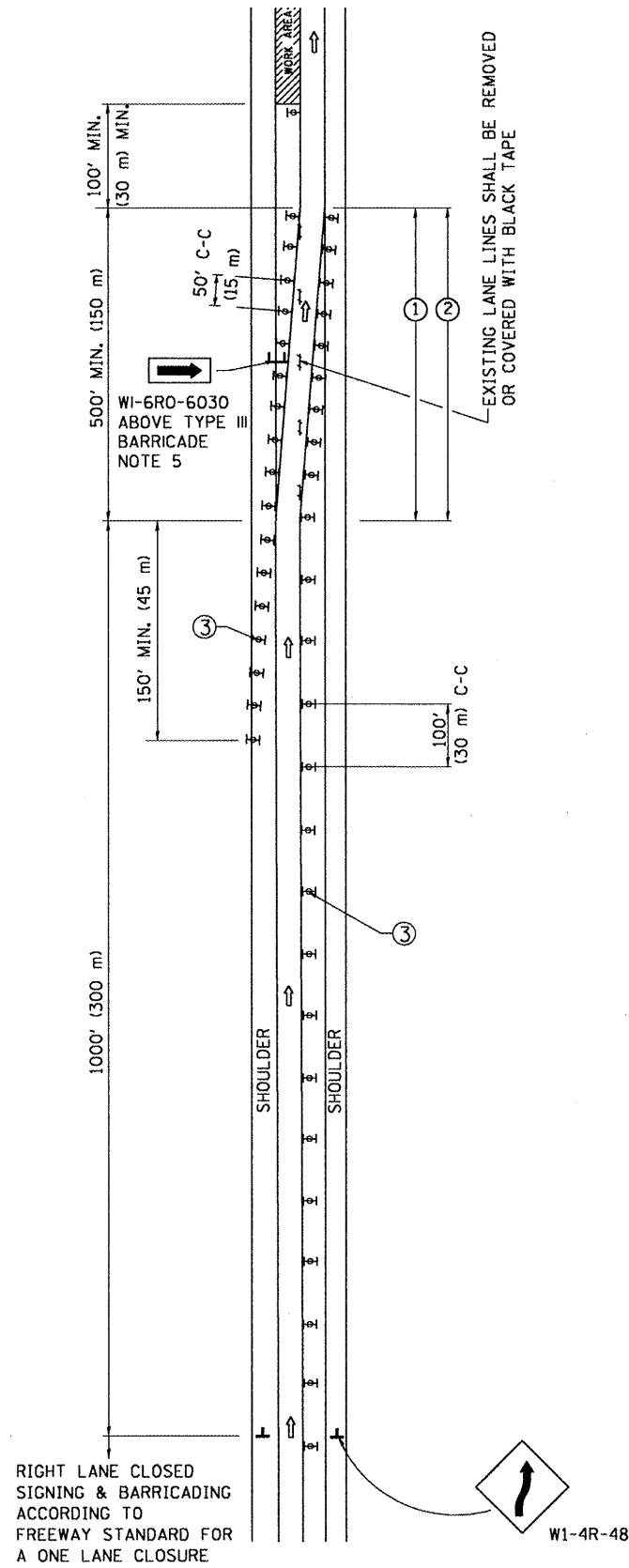
GENERAL NOTES:

1. CONES MAY BE SUBSTITUTED FOR DRUMS OR TYPE II BARRICADES DURING DAY OPERATIONS. CONES SHALL BE A MINIMUM OF 28 (700) HIGH.
2. STEADY BURN LIGHTS WILL NOT BE REQUIRED FOR DAY OPERATIONS.
3. A FLAGGER SHALL BE POSITIONED AT EACH CLOSED RAMP THAT IS OPEN TO CONSTRUCTION VEHICLES.
4. ALL ROUTE MARKERS AND TRAILBLAZER ASSEMBLIES WHICH DIRECT MOTORISTS TO A CLOSED ENTRANCE RAMP SHALL BE COVERED.
5. THE SIGNING AND BARRICADING WHICH IS REQUIRED BY THIS DETAIL SHALL BE INCLUDED IN THE COST OF TRAFFIC CONTROL AND PROTECTION (EXPRESSWAYS).
6. AUTHORIZATION FROM THE DISTRICT'S BUREAU OF TRAFFIC IS REQUIRED FOR ALL RAMP CLOSURES.
7. THE RAMP CLOSURE ADVANCE INFORMATION SIGNS SHALL BE ERECTED IF THE CLOSURE TIME EXCEEDS TWENTY-FOUR (24) HOURS. ADDITIONAL ADVANCE WARNING SIGNS ON EXIT GUIDE SIGNING WILL BE REQUIRED FOR EXIT RAMP CLOSURES THAT EXCEED TWENTY FOUR (24) HOURS IN LENGTH.

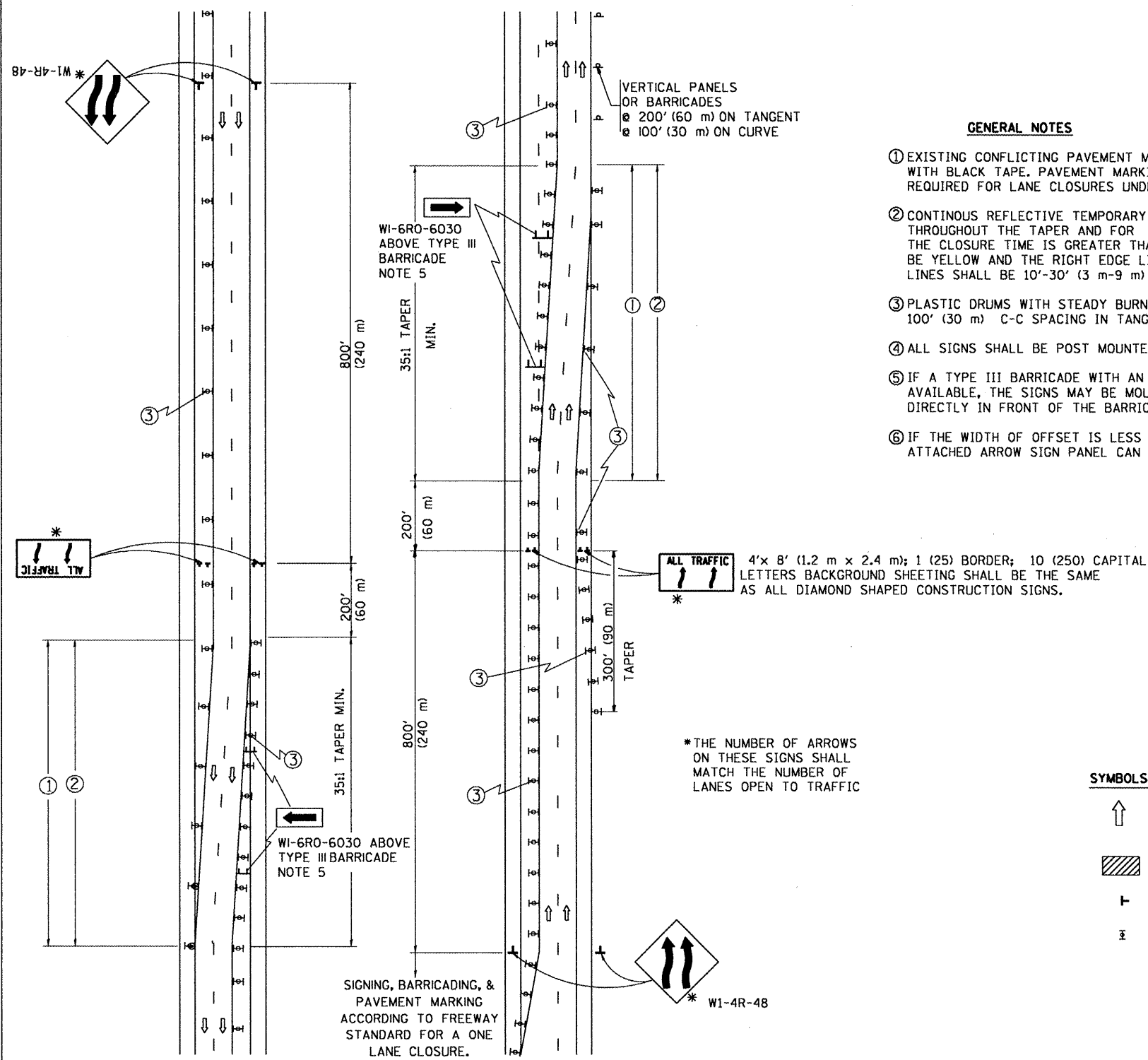
ALL DIMENSIONS ARE IN INCHES (MILLIMETERS) UNLESS OTHERWISE SHOWN.

FILE NAME = \\dist\inf2\users\amthk1\Desk top\CADD	USER NAME = smthk1	DESIGNED - DWS	REVISED - DWS 12-94	STATE OF ILLINOIS DEPARTMENT OF TRANSPORTATION	FREEWAY ENTRANCE AND EXIST RAMP CLOSURE DETAILS			F.A. RTE.	SECTION	COUNTY	TOTAL SHEETS	SHEET NO.
DETAILS\td08.dgn		DRAWN -	REVISED - DWS/JAF 12-02		SCALE: NONE	SHEET NO. 1 OF 1 SHEETS	STA.	TO STA.	VAR.	2008-048 PP	COOK & WILL	13 8
PLOT SCALE = 100.000' / IN.		CHECKED -	REVISED - JAF 02-06					TC-08		CONTRACT NO. 60E97		
PLOT DATE = 6/24/2008		DATE - 02-83	REVISED - SPB 01-07					FED. ROAD DIST. NO. 1 ILLINOIS FED. AID PROJECT				

SINGLE LANE WEAVE



MULTI-LANE WEAVE



GENERAL NOTES

- EXISTING CONFLICTING PAVEMENT MARKING LINES SHALL BE REMOVED OR COVERED WITH BLACK TAPE. PAVEMENT MARKING REMOVAL OR BLACK TAPE SHALL NOT BE REQUIRED FOR LANE CLOSURES UNDER 24 HOURS IN DURATION.
- CONTINUOUS REFLECTIVE TEMPORARY PAVEMENT MARKING TAPE SHALL BE PLACED THROUGHOUT THE TAPER AND FOR 300' (90 m) ALONG SIDE THE WORK AREA WHERE THE CLOSURE TIME IS GREATER THAN FOURTEEN DAYS. THE LEFT EDGE LINE SHALL BE YELLOW AND THE RIGHT EDGE LINE SHALL BE WHITE. FOR MULTI-LANE WEAVE LANE LINES SHALL BE 10'-30' (3 m-9 m) SKIP DASH, WHITE.
- PLASTIC DRUMS WITH STEADY BURN LIGHTS AT 50' (15 m) C-C SPACING IN TAPERS AND 100' (30 m) C-C SPACING IN TANGENTS.
- ALL SIGNS SHALL BE POST MOUNTED IF THE CLOSURE TIME EXCEEDS FOUR DAYS.
- IF A TYPE III BARRICADE WITH AN ATTACHED SIGN PANEL WHICH MEETS NCHRP 350 IS NOT AVAILABLE, THE SIGNS MAY BE MOUNTED ON NCHRP 350 TEMPORARY SIGN SUPPORTS DIRECTLY IN FRONT OF THE BARRICADE.
- IF THE WIDTH OF OFFSET IS LESS THAN 6' THEN THE TYPE III BARRICADE WITH ATTACHED ARROW SIGN PANEL CAN BE ELIMINATED IN THE TAPER AREAS.

SYMBOLS

- ↑ DIRECTION OF TRAFFIC
- ▨ WORK AREA
- ┌ SIGN ON PORTABLE OR PERMANENT SUPPORT
- ⊞ TYPE II BARRICADE, DRUM OR VERTICAL BARRICADE WITH MONO-DIRECTIONAL STEADY BURNING LIGHT

ALL DIMENSIONS ARE IN INCHES (MILLIMETERS) UNLESS OTHERWISE SHOWN

STATE OF ILLINOIS
DEPARTMENT OF TRANSPORTATION

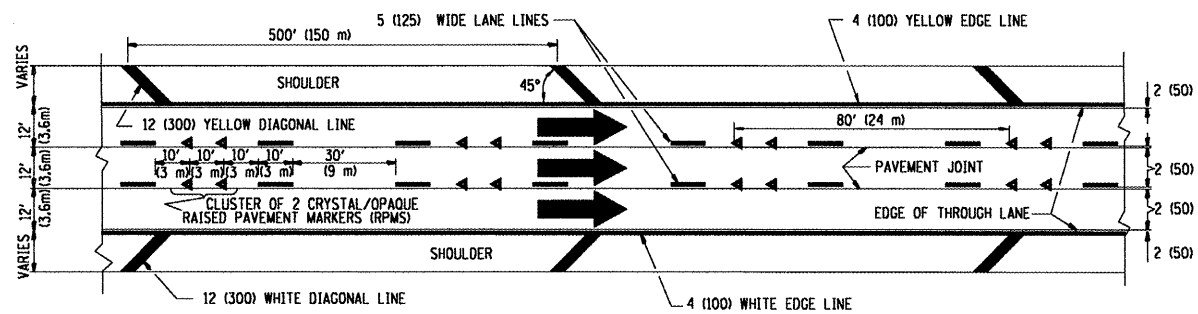
TRAFFIC CONTROL DETAILS FOR
FREEWAY SINGLE & MULTI-LANE WEAVE

F.A. RTE.	SECTION	COUNTY	TOTAL SHEETS	SHEET NO.
VAR.	2008-048 PP	COOK & WILL	13	9
TC-09			CONTRACT NO. 60E97	
FED. ROAD DIST. NO. 1 ILLINOIS FED. AID PROJECT				

FILE NAME =	USER NAME = am1thk1	DESIGNED - DWS	REVISED - DWS 11-96
DETAILS\to09.dgn	DRAWN -	REVISED - JAF 01-03	
PLOT SCALE = 1/8" = 1'-0"	CHECKED -	REVISED - JAF 02-06	
PLOT DATE = 6/24/2008	DATE - 02-07	REVISED - SPB 01-07	

SCALE: NONE SHEET NO. 1 OF 1 SHEETS STA. TO STA.

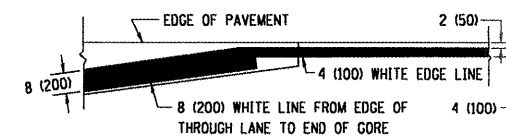
THE DIAGONAL LINES SHALL BE SPACED AT 40' (12 m) C-C ACROSS ALL STRUCTURES WHICH ARE 500' (150 m) OR LESS IN LENGTH
 THE DIAGONAL LINES ARE NOT REQUIRED ON SHOULDERS WHICH ARE 6' (1.8 m) OR LESS IN WIDTH



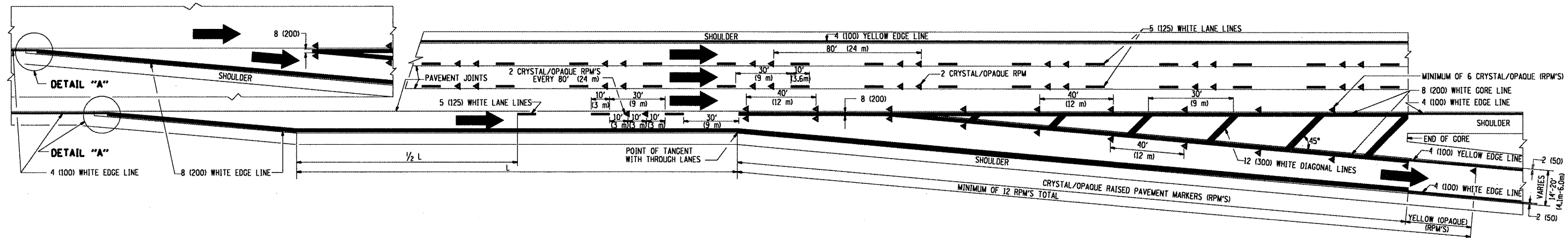
TYPICAL EDGE LINES & LANE LINES

NOTES:

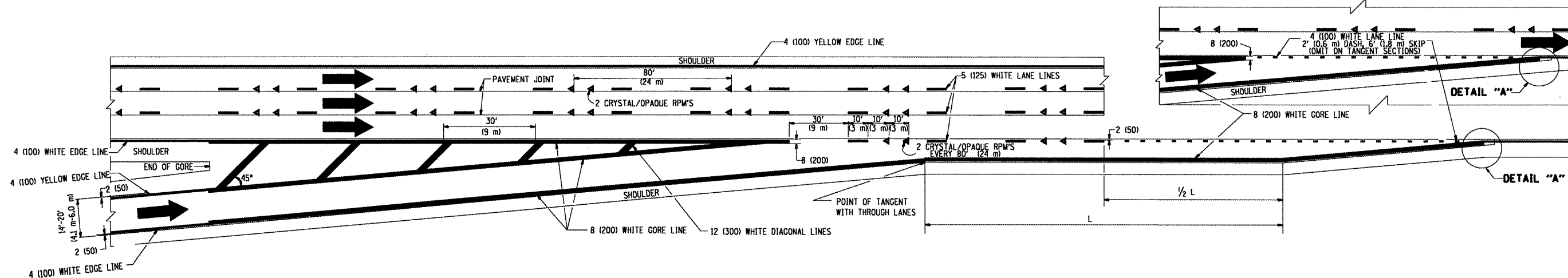
1. THERMO PLASTIC PAVEMENT MARKING LINE SHALL BE USED FOR THE EDGE LINES, GORE LINES, AND DIAGONAL LINES ON BITUMINOUS PAVEMENT ONLY.
2. PREFORMED PLASTIC TYPE B PAVEMENT MARKING LINE SHALL BE USED FOR ALL LANE LINES ON BITUMINOUS PAVEMENT
3. POLYUREA PAVEMENT MARKING SHALL BE USED FOR ALL MARKINGS ON PCC



DETAIL "A"

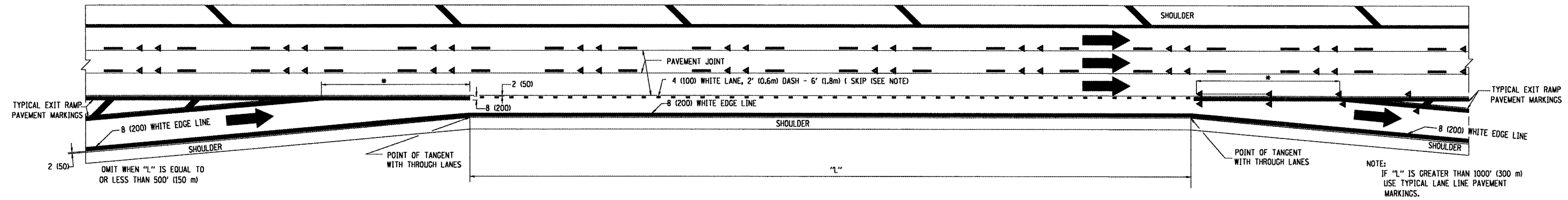


TYPICAL EXIT RAMP PAVEMENT MARKINGS

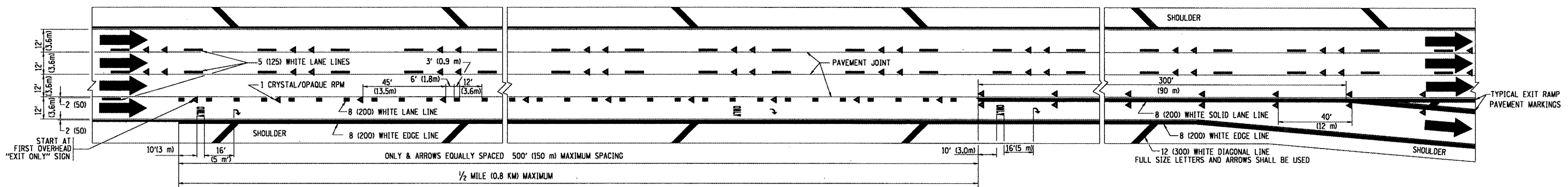


TYPICAL ENTRANCE RAMP PAVEMENT MARKINGS

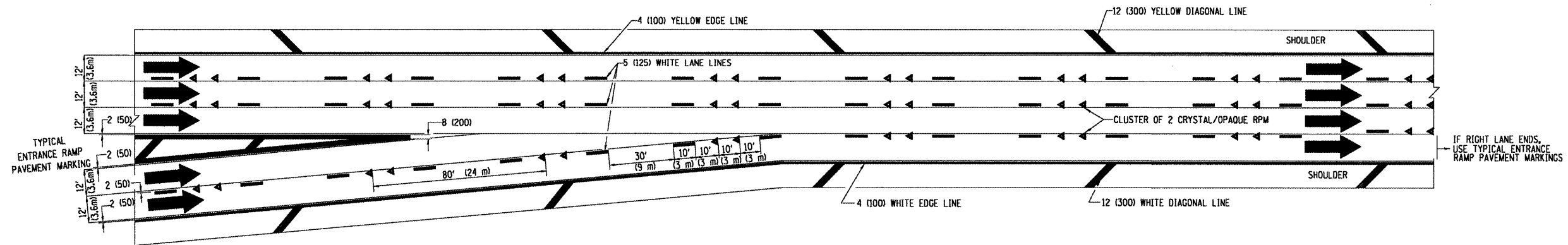
FILE NAME =	USER NAME = am1thk1	DESIGNED - D.W.S.	REVISED - A.H. 03-96	STATE OF ILLINOIS DEPARTMENT OF TRANSPORTATION	MULTI-LANE FREEWAY PAVEMENT MARKING DETAILS			F.A. .	SECTION	COUNTY	TOTAL SHEET NO.	
\\dist1\ntfa2\user\am1thk1\Desktop\CADD	DETAILS\12.dgn	DRAWN -	REVISED - D.W.S. 07-96		SCALE: NONE	SHEET NO. 1 OF 2 SHEETS	STA.	TO STA.	VAR.	2008-048 PP	COOK & WILL	13 10
PLOT SCALE = 100.000' / IN.	CHECKED -	REVISED - J.A.F. 02-06						TC-12		CONTRACT NO. 60E97		
PLOT DATE = 6/24/2008	DATE - 01-90	REVISED - S.P.B. 01-07						FED. ROAD DIST. NO. 1 [ILLINOIS] FED. AID PROJECT				



TYPICAL ENTRANCE/EXIT RAMP COMBINATION PAVEMENT MARKINGS



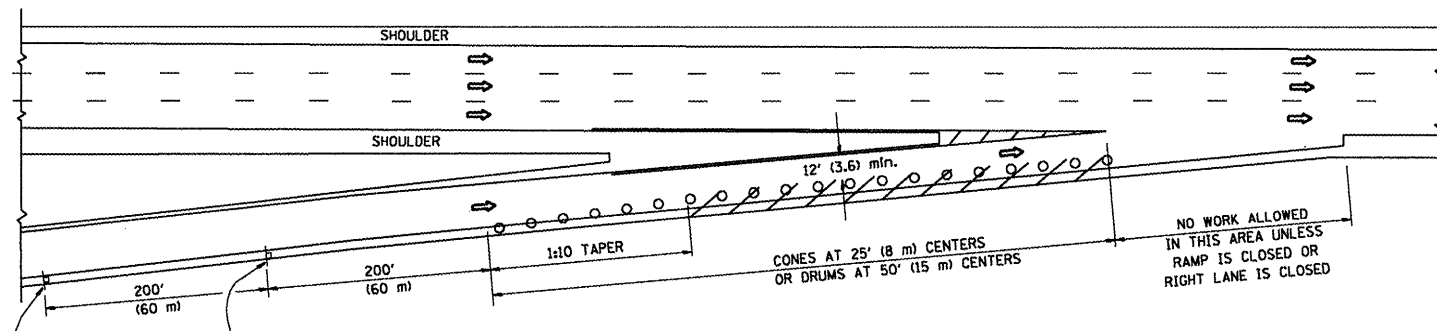
TYPICAL EXIT ONLY LANE PAVEMENT MARKINGS



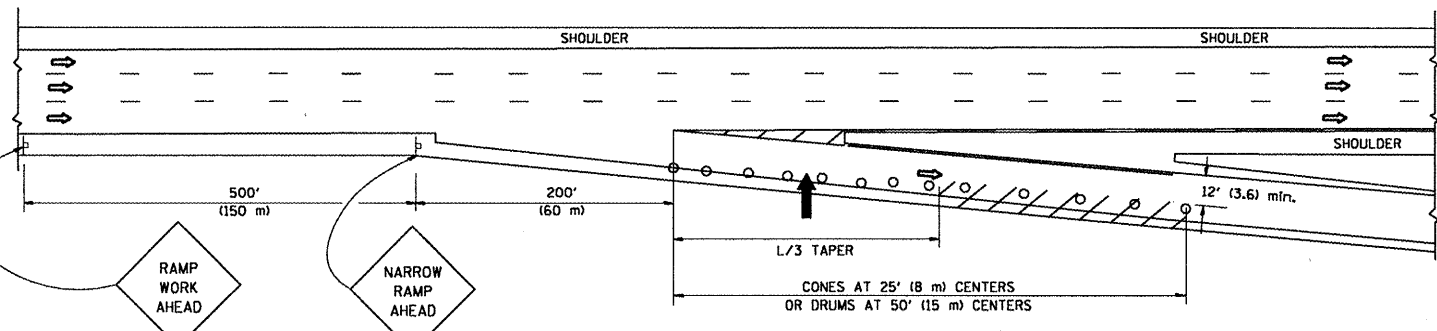
TYPICAL TWO LANE ENTRANCE RAMP PAVEMENT MARKINGS

FILE NAME =	USER NAME = smthk1	DESIGNED - D.W.S.	REVISED - A.H. 03-96	STATE OF ILLINOIS DEPARTMENT OF TRANSPORTATION	MULTI-LANE FREEWAY PAVEMENT MARKING DETAILS		F.A. RTE.	SECTION	COUNTY	TOTAL SHEETS	SHEET NO.	
DETAILS\c12.dgn	DRAWN -	REVISED - D.W.S. 07-96	REVISED - J.A.F. 02-06		SCALE: NONE	SHEET NO. 1 OF 2 SHEETS	STA.	TO STA.	2008-048 PP	COOK & WILL	13	11
PLOT SCALE = 1/8" = 1'-0"	CHECKED -	REVISED - J.A.F. 02-06	REVISED - S.P.B. 01-07						TC-12		CONTRACT NO. 60E97	
PLOT DATE = 6/24/2008	DATE - 01-90								FED. ROAD DIST. NO. 1 ILLINOIS FED. AID PROJECT			

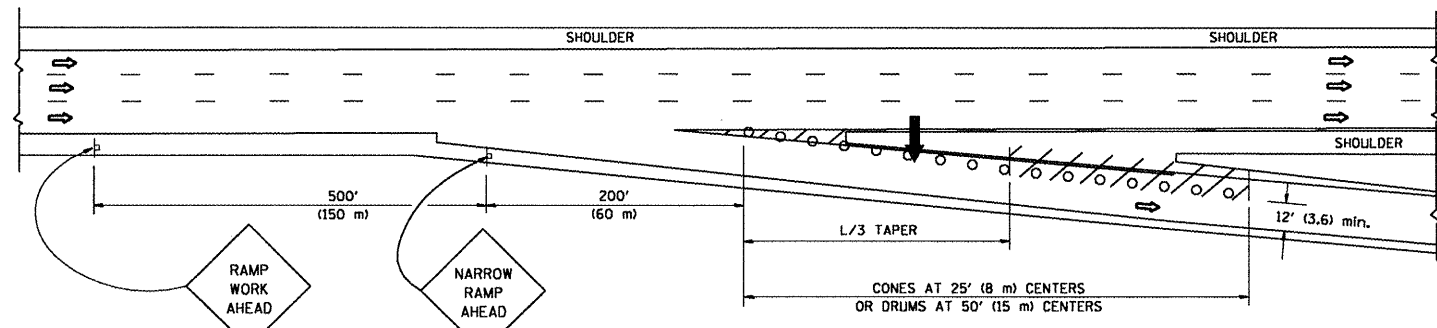
PARTIAL RAMP CLOSURE DETAILS



TYPICAL ENTRANCE RAMP



TYPICAL EXIT RAMP



TYPICAL EXIT RAMP

SYMBOLS

- ➔ ARROWBOARD
- ▨ WORK AREA
- ⊥ SIGN ON PORTABLE OR PERMANENT SUPPORT
- FLAGGER WITH CONTROL SIGN
- ⊠ TYPE II BARRICADE, DRUM OR VERTICAL BARRICADE WITH STEADY BURN MONO-DIRECTIONAL LIGHT
- CONE, DRUM OR BARRICADE

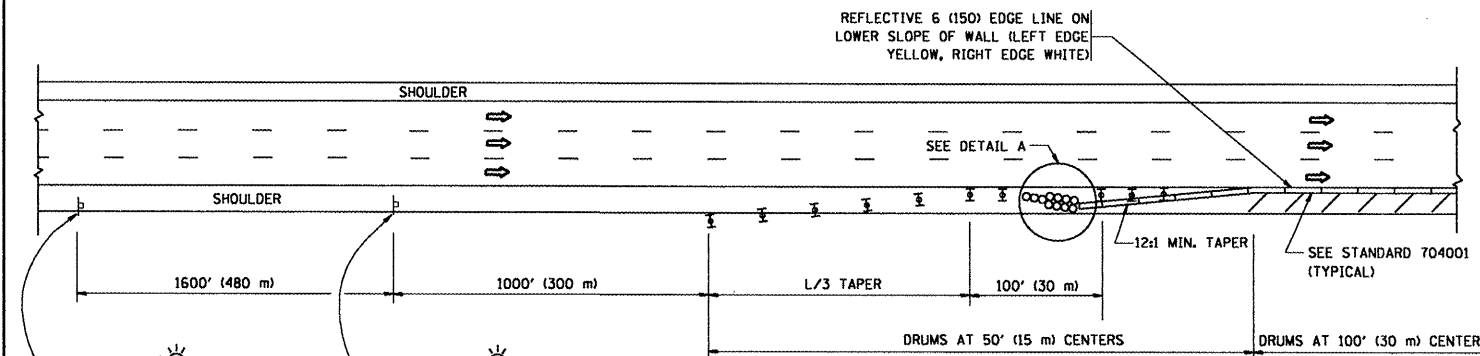
GENERAL NOTES

1. THE "L" DISTANCE EQUALS:

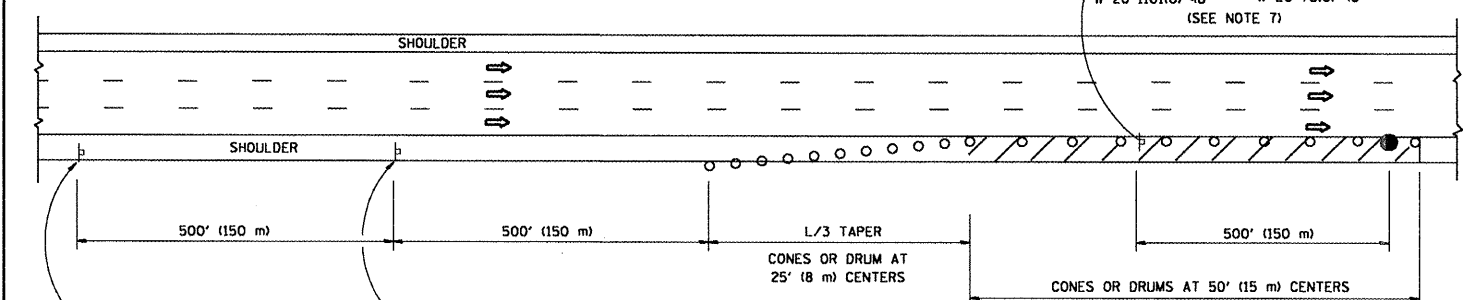
SPEED LIMIT	FORMULAS
45 mph (80 km/h) OR GREATER	METRIC: $L=0.65(W)(S)$ ENGLISH: $L=(W)(S)$

W = WIDTH OF OFFSET IN FEET (METERS)
S = NORMAL POSTED SPEED MPH (KM/H)
2. PLASTIC DRUMS WITH HIGH PERFORMANCE REFLECTIVE SHEETING AND STEADY BURNING LIGHTS ARE REQUIRED FOR ALL NIGHTTIME CLOSURES.
3. ALL SIGNS SHALL BE POST MOUNTED IF THE CLOSURE TIME EXCEEDS FOUR DAYS.
4. FLASHING LIGHTS SHALL BE USED DURING THE HOURS OF DARKNESS AND SHALL BE INSTALLED ABOVE THE FIRST TWO SETS OF SIGNS.

SHOULDER CLOSURE DETAILS

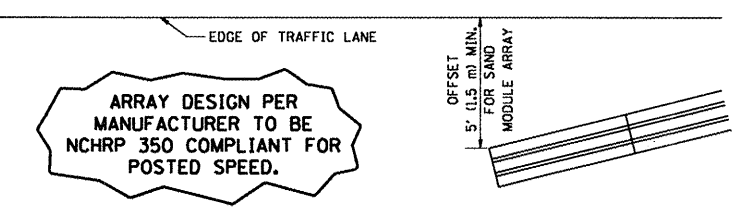


PERMANENT SHOULDER CLOSURE



DAYTIME SHOULDER CLOSURE

THIS DETAIL IS USED WHERE:
 1. VEHICLES, EQUIPMENT, WORKERS OR THEIR ACTIVITIES ENCRoACH IN AN AREA CLOSER THAN 15' (4.5 m) TO THE EDGE OF PAVEMENT FOR A PERIOD IN EXCESS OF 15 MINUTES.



ARRAY DESIGN PER MANUFACTURER TO BE NCHRP 350 COMPLIANT FOR POSTED SPEED.

DETAIL "A" IMPACT ATTENUATOR, TEMPORARY (SEE NOTE 5)

ALL DIMENSIONS ARE IN INCHES (MILLIMETERS) UNLESS OTHERWISE SHOWN.

FILE NAME = \\dist\inf2\users\smthk1\Desktop\CADD	USER NAME = smthk1	DESIGNED -	REVISED - J.A.F. 12-02
DETAILS\tcl17.dgn	DETAILS\tcl17.dgn	DRAWN - D.W.S.	REVISED - 04-03
PLOT SCALE = 100.0000' / IN.		CHECKED -	REVISED - J.A.F. 12-06
PLOT DATE = 6/24/2008		DATE - 11-96	REVISED - S.P.B. 01-07

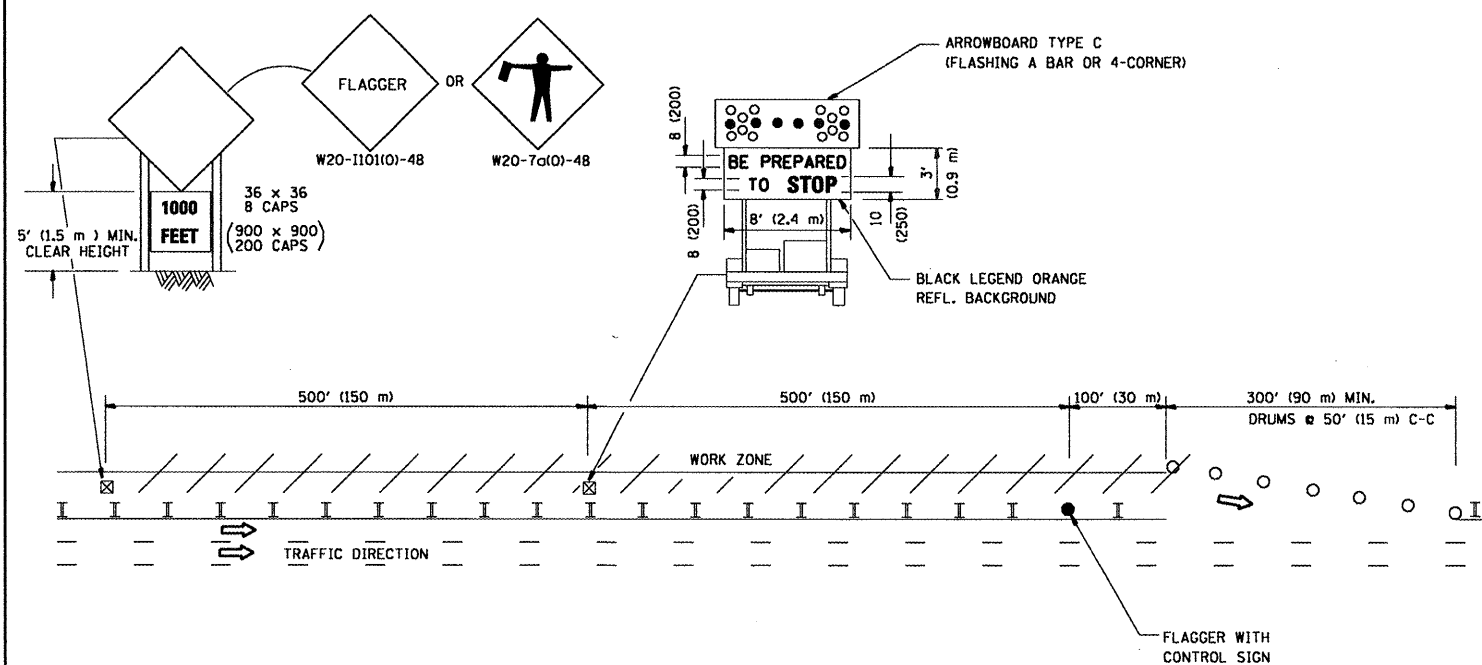
STATE OF ILLINOIS DEPARTMENT OF TRANSPORTATION

TRAFFIC CONTROL DETAILS FOR FREEWAY SHOULDER CLOSURES AND PARTIAL RAMP CLOSURES			
SCALE: NONE	SHEET NO. 1 OF 1 SHEETS	STA. TO STA.	

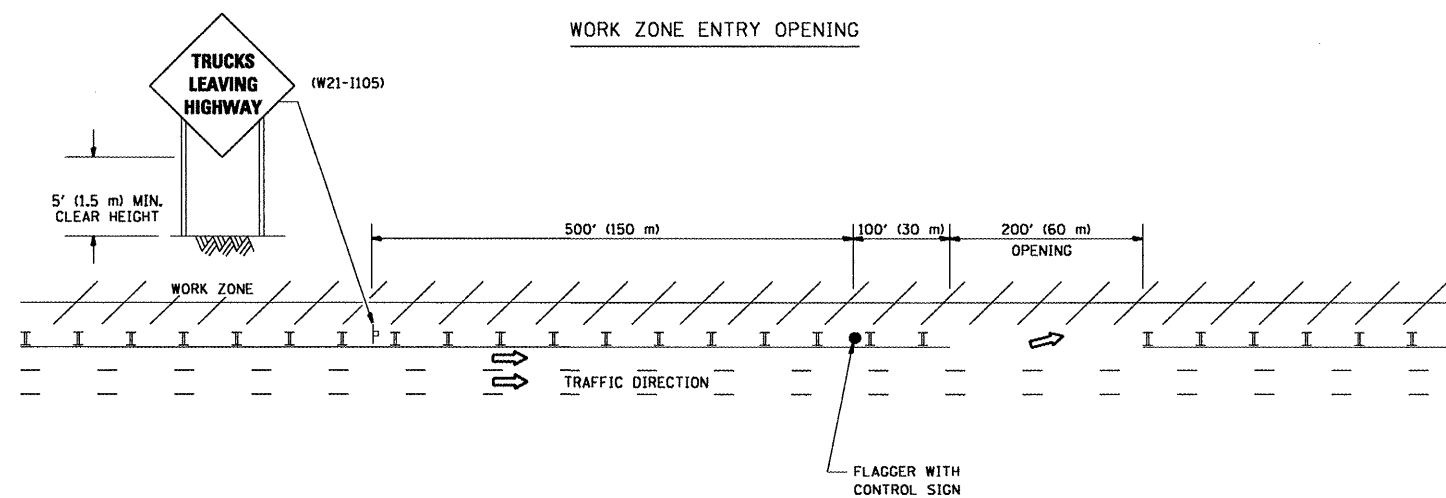
F.A. RTE.	SECTION	COUNTY	TOTAL SHEETS	SHEET NO.
VAR.	2008-048 PP	COOK & WILL	13	12
TC-17		CONTRACT NO. 60E97		
FED. ROAD DIST. NO. 1 ILLINOIS FED. AID PROJECT				

SIGNING FOR FLAGGING OPERATIONS AT WORK ZONE OPENINGS

WORK ZONE EXIT OPENING



WORK ZONE ENTRY OPENING



NOTES:

1. The Arrowboard, the Flagger Ahead trailer mounted sign, and the Trucks Leaving Highway sign shall be removed or turned away from traffic and the exit and entry openings shall be closed when the flagging operation ceases.
2. Work Zone Exit Openings should be a minimum of one half mile apart.
3. Exiting the work zone at any place other than at a Work Zone Exit Opening will be prohibited.
4. All vehicles shall enter the work zone at entry openings, using their turn signals to warn motorists.

ALL DIMENSIONS ARE IN INCHES (MILLIMETERS)
UNLESS OTHERWISE SHOWN

FILE NAME =	USER NAME = smithk1	DESIGNED -	REVISED - D.W.S. 08-98
\\dist\ntfs2\users\smithk1\Desktop\CADD	DETAILS\tcl18.dgn	DRAWN -	REVISED - J.A.F. 04-03
	PLOT SCALE = 100.000' / IN.	CHECKED -	REVISED - J.A.F. 02-06
	PLOT DATE = 6/24/2008	DATE -	REVISED - S.P.B. 01-07

STATE OF ILLINOIS
DEPARTMENT OF TRANSPORTATION

SIGNING FOR FLAGGING OPERATIONS
AT WORK ZONE OPENINGS

SCALE: NONE SHEET NO. 1 OF 1 SHEETS STA. TO STA.

F.A. RTE.	SECTION	COUNTY	TOTAL SHEETS	SHEET NO.
VAR.	2008-04B PP	COOK & WILL	13	13
TC-18		CONTRACT NO. 60E97		
FED. ROAD DIST. NO. 1 ILLINOIS FED. AID PROJECT				