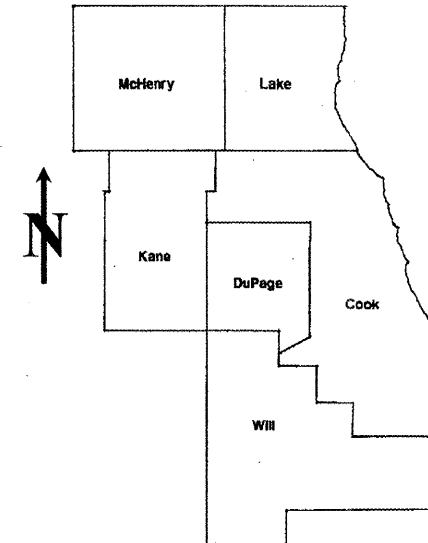


ROUTE	SECTION	COUNTY	TOTAL SHEETS	SHEET NUMBER
VARIOUS	2008-049 PP	COOK & DUPAGE	13	1

STATE OF ILLINOIS
DEPARTMENT OF TRANSPORTATION
DIVISION OF HIGHWAYS
DISTRICT ONE
PROPOSED HIGHWAY PLANS

CONTRACT NO. 60E98

D-91-555-08



LOCATION OF IMPROVEMENT INDICATED THUS:

FOR INDEX OF SHEETS SEE SHEET 2

VARIOUS ROUTES
 SECTION: 2008-049 PP
 VARIOUS INTERSTATE RAMPS
 PAVEMENT PATCHING
 COOK & DUPAGE COUNTIES
 C-91-555-08

DISTRICT ONE - DESIGN - PLAN PREPARATION ENGINEER:
 KEN ENG / (847) 705-4247

STATE OF ILLINOIS DEPARTMENT OF TRANSPORTATION DIVISION OF HIGHWAYS	
SUBMITTED:	<u>JUNE 20, 2008</u>
	<u>Diane M. O'Keefe</u> DEPUTY DIRECTOR OF HIGHWAYS, REGION ENGINEER
	<u>June 27, 2008</u> <u>Eric E. Horn</u> ENGINEER OF DESIGN AND ENVIRONMENT
	<u>June 27, 2008</u> <u>Christine M. Reed</u> DIRECTOR, DIVISION OF HIGHWAYS

PRINTED BY THE AUTHORITY
OF THE STATE OF ILLINOIS

J.U.L.I.E.: JOINT UTILITY LOCATION
INFORMATION FOR EXCAVATION
(312) 744-7000

CONTRACT NO. 60E98

INDEX OF SHEETS

<u>SHEET NO.</u>	<u>DESCRIPTION</u>
1	TITLE SHEET
2	INDEX OF SHEETS, STATE STANDARDS AND GENERAL NOTES
3	SUMMARY OF QUANTITIES
4	GENERAL LOCATION MAP
5-6	PATCHING SCHEDULE
7	BUTT JOINT AND HMA TAPER DETAILS
8	ENTRANCE RAMP CLOSURE DETAILS
9	FREEWAY SINGLE & MULTI-LANE WEAVE
10-11	MULTI-LANE FREEWAY PAVEMENT MARKING DETAILS
12	FREEWAY SHOULDER CLOSURES AND PARTIAL RAMP CLOSURES
13	SIGNING FOR FLAGGING OPERATIONS AT WORK ZONE OPERATIONS

STATE STANDARDS

<u>STANDARD NO.</u>	<u>DESCRIPTION</u>
000001-05	TYPICAL SYMBOLS, ABBREVIATIONS AND PATTERNS
442201-03	CLASS C AND D PATCHES
701400-02	APPROACH TO LANE CLOSURE, FREEWAY/EXPRESSWAY
701401-04	LANE CLOSURE, FREEWAY/EXPRESSWAY
701901	TRAFFIC CONTROL DEVICES

GENERAL NOTES

BEFORE STARTING ANY EXCAVATION, THE CONTRACTOR SHALL CALL "JULIE" AT (800) 892-0123 OR 811 FOR FIELD LOCATIONS OF BURIED ELECTRIC, TELEPHONE AND GAS FACILITIES. (48 HOUR NOTIFICATION REQUIRED)

BEFORE STARTING ANY EXCAVATION, THE CONTRACTOR SHALL CALL "C.U.A.N." (CHICAGO UTILITY ALERT NETWORK) AT (312) 744-7000 FOR FIELD LOCATIONS OF BURIED ELECTRIC, TELEPHONE AND GAS UTILITIES (48 HOUR NOTIFICATION IS REQUIRED).

THE CONTRACTOR WILL NOT BE ALLOWED TO SET UP A YARD OR FIELD OFFICE ON STATE (OR TOLLWAY) PROPERTY WITHOUT WRITTEN PERMISSION FROM THE DEPARTMENT (OR ISTHA)

WHEN ARTIFICIAL LIGHTING IS UTILIZED IN NIGHT OPERATIONS, THE CONTRACTOR SHALL EXERCISE THE UTMOST PRECAUTIONS IN PREVENTING ADVERSE VISABILITY TO THE MOTORING PUBLIC AND ADJOINING RESIDENTIAL AREAS.

ANY PAVEMENT MARKINGS AND RAISED REFLECTIVE PAVEMENT MARKERS OBLITERATED BY MILLING AND RESURFACING OPERATIONS ON SIDE STREETS AND ENTRANCES SHALL BE REPLACED AND PAID FOR IN KIND.

BEFORE BEGINNING ANY WORK, THE CONTRACTOR SHALL RETAIN AND RECORD FOR FUTURE REFERENCE, ALL EXISTING PAVEMENT MARKING LINES (AND RAISED REFLECTIVE PAVEMENT MARKERS) IN ORDER THAT THESE LOCATIONS CAN BE RE-ESTABLISHED FOR STRIPING. EXACT LOCATIONS OF ALL PAVEMENT MARKINGS SHALL BE AS DIRECTED BY THE ENGINEER.

ALL PAVEMENT PATCHING LOCATIONS WILL BE DETERMINED IN THE FIELD BY THE ENGINEER.

THE CONTRACTOR SHALL CONTACT THE DISTRICT ONE TRAFFIC CONTROL SUPERVISOR AT (847) 705-4470 A MINIMUM OF 72 HOURS IN ADVANCE OF BEGINNING WORK.

THE ENGINEER SHALL CONTACT MR. WALLY CZARNY, AREA TRAFFIC FIELD ENGINEER AT (773) 685-4342 MINIMUM OF TWO (2) WEEKS PRIOR TO PLACEMENT OF PERMANENT PAVEMENT MARKINGS.

THE EXISTING ROADWAY TYPICAL SECTION IS ASSUMED TO HAVE A 3 INCH HOT-MIX ASPHALT OVERLAY ON TOP OF A TEN INCH CONCRETE BASE.

HOT-MIX ASPHALT MIXTURE REQUIREMENTS

	<u>MIXTURE TYPE</u>	<u>AC TYPE</u>	<u>AIR VOIDS (%)</u>
ROADWAY	HOT-MIX ASPHALT SURFACE COURSE, MIX "D", N90 (IL 9.5 MM), 2"	PG 64-22	4% @ 90 GYR
PATCHES	CLASS D PATCHES, (HMA BINDER IL-25.0 MM)	PG 64-22	4% @ 105 GYR
	NOTE: TOP 2 INCHES OF PATCHES SHALL BE SAME AS SURFACE COURSE:		
	HOT-MIX ASPHALT SURFACE COURSE, MIX "D", N90 (IL 9.5 MM), 2"	PG 64-22	4% @ 90 GYR

THE UNIT WEIGHT USED TO CALCULATE ALL HOT-MIX ASPHALT SURFACE MIXTURE QUANTITIES IS 112 LBS/SY/IN.

FILE NAME =	USER NAME = wilgreendp	DESIGNED -	REVISED -	STATE OF ILLINOIS DEPARTMENT OF TRANSPORTATION	INDEX OF SHEETS, STATE STANDARDS AND GENERAL NOTES	F.A. RTE.	SECTION	COUNTY	TOTAL SHEETS	SHEET NO.	
et\proj\jota\dl36508\design_aa.dgn		DRAWN -	REVISED -			VAR.	2008-049 PP	COOK & DUPAGE	13	2	
PLOT SCALE = 100.0000' / IN.		CHECKED -	REVISED -			CONTRACT NO. 60E98					
PLOT DATE = 6/25/2008		DATE -	REVISED -			FED. ROAD DIST. NO. 1 [ILLINOIS] FED. AID PROJECT					
					SCALE:	SHEET NO.	OF	SHEETS	STA.	TO STA.	

SUMMARY OF QUANTITIES			URBAN 100% STATE	CONSTRUCTION TYPE CODE			
CODE NO	ITEM	UNIT		TOTAL QUANTITIES	COOK COUNTY 1000-2A	DUPAGE COUNTY 1000-2A	
40600200	BITUMINOUS MATERIALS (PRIME COAT)	TON	1	0.5	0.5		
40600300	AGGREGATE (PRIME COAT)	TON	4	2	2		
40600400	MIXTURE FOR CRACKS, JOINTS, AND FLANGEWAYS	TON	5	2	3		
40600895	CONSTRUCTING TEST STRIP	EACH	1	0.5	0.5		
40600982	HOT-MIX ASPHALT SURFACE REMOVAL - BUTT JOINT	SO YD	236	115	121		
40603345	HOT-MIX ASPHALT SURFACE COURSE, MIX "D", N90	TON	176	86	90		
44000157	HOT-MIX ASPHALT SURFACE REMOVAL, 2"	SO YD	1566	766	800		
44201765	CLASS D PATCHES, TYPE II, 10 INCH	SO YD	10	0	10		
44201769	CLASS D PATCHES, TYPE III, 10 INCH	SO YD	16	0	16		
44201771	CLASS D PATCHES, TYPE IV, 10 INCH	SO YD	93	93	0		
67000400	ENGINEER'S FIELD OFFICE, TYPE A	CAL MO	3	1	2		
67100100	MOBILIZATION	L SUM	1	0.5	0.5		
*78000200	THERMOPLASTIC PAVEMENT MARKING - LINE 4"	FOOT	2512	1288	1224		
X7011015	TRAFFIC CONTROL AND PROTECTION (EXPRESSWAYS)	L SUM	1	0.5	0.5		

SUMMARY OF QUANTITIES			TOTAL QUANTITIES	CONSTRUCTION TYPE CODE			
CODE NO	ITEM	UNIT					

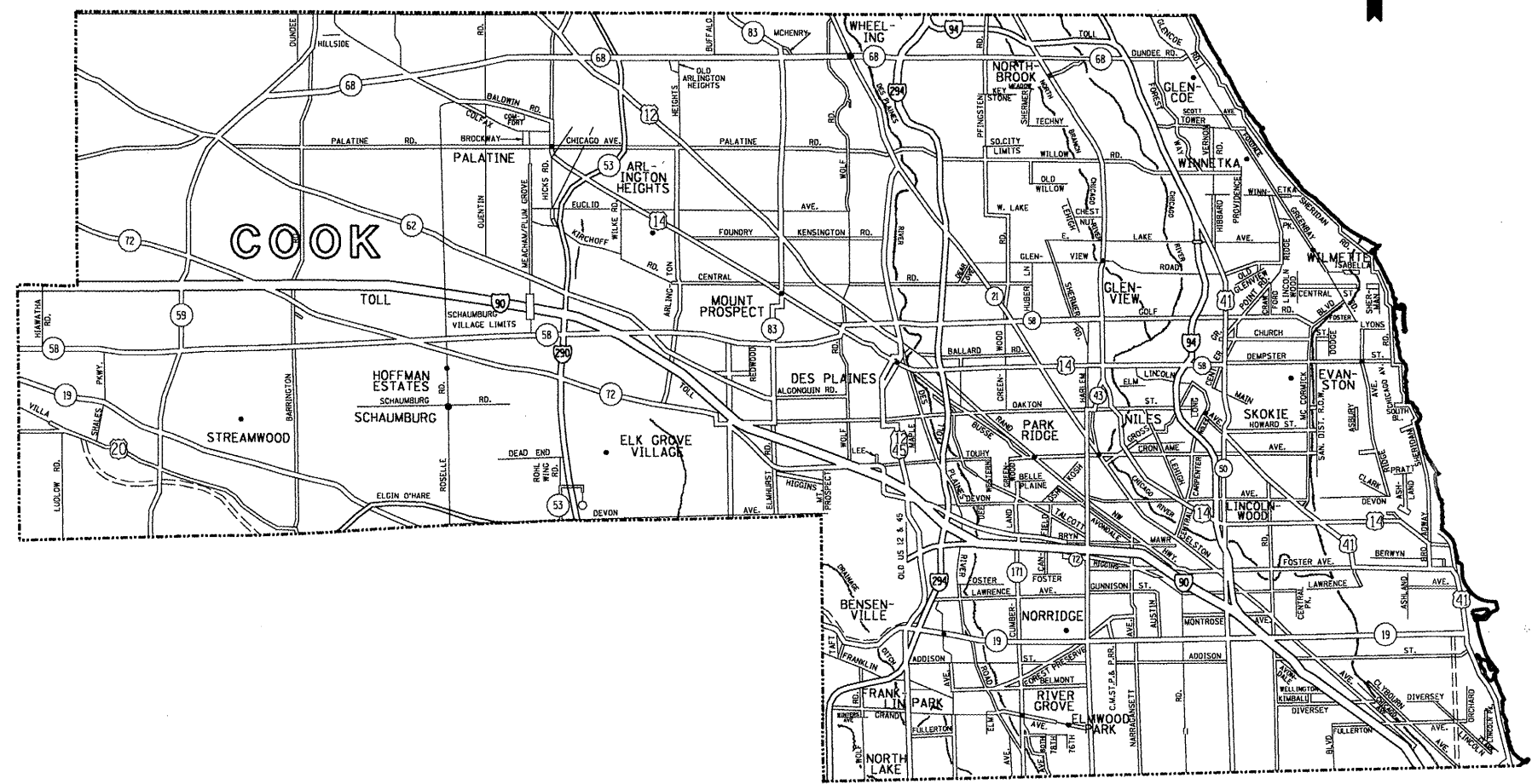
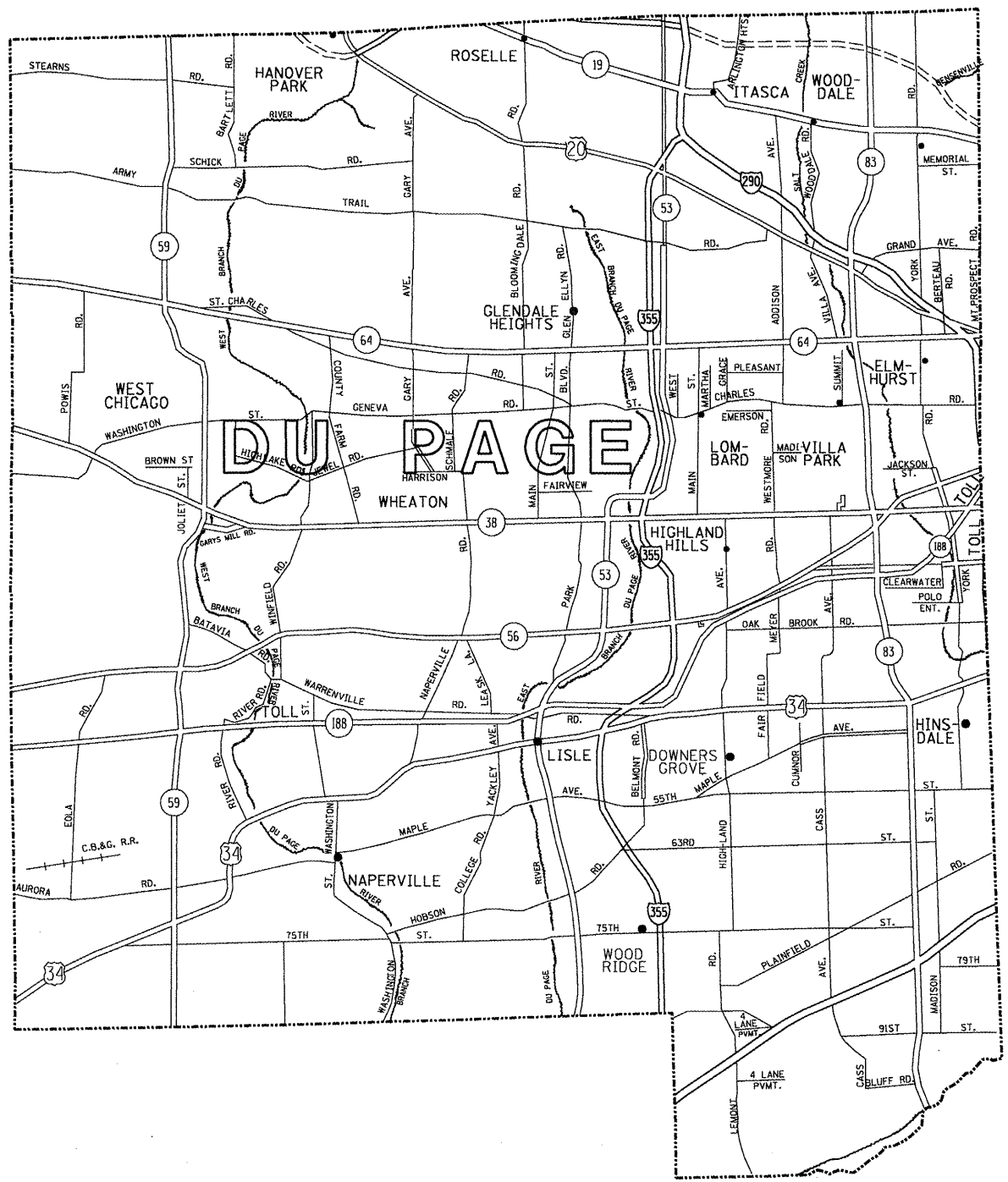
* SPECIALTY ITEMS

REVISIONS	
NAME	DATE

ILLINOIS DEPARTMENT OF TRANSPORTATION
SUMMARY OF QUANTITIES

PLOT DATE: 6/27/2008

6/27/2008 2:27:14 PM User: wjgreendp



**STATE OF ILLINOIS
DEPARTMENT OF TRANSPORTATION**

GENERAL LOCATION MAP - COOK & DUPAGE COUNTIES

FILE NAME = c:\projects\136508\design_aa.dgn	USER NAME = wilgreendp	DESIGNED -	REVISED -
		DRAWN -	REVISED -
		CHECKED -	REVISED -
		DATE -	REVISED -

SCALE:	SHEET NO. OF SHEETS STA. TO STA.
--------	----------------------------------

F.A. RTE.	SECTION	COUNTY	TOTAL SHEETS	SHEET NO.
VAR.	2008-049 PP	COOK & DUPAGE	13	4
CONTRACT NO. 60E98				
FED. ROAD DIST. NO. ILLINOIS FED. AID PROJECT				

LOCATIONS FOR INTERSTATE 290	REPAIR LENGTH (FT)	REPAIR WIDTH (FT)	REPAIR AREA (SF)	REPAIR AREA (SY)	SURFACE TYPE	REPAIR WORK
WB IL 64 (NORTH AVE) ENTRANCE RAMP TO EB I-290	4	12	48	5	HMA	HMA SURF REM & RESURF
	4	12	48	5	HMA	HMA SURF REM & RESURF
	4	12	48	5	HMA	HMA SURF REM & RESURF
	12	12	144	16	PCC	CLASS D PATCH
WB I-290 EXIT RAMP TO LAKE STREET	4	12	48	5	PCC	CLASS D PATCH
	4	12	48	5	PCC	CLASS D PATCH
WB YORK ROAD ENTRANCE RAMP TO WB I-290	15	20	300	33	HMA	HMA SURF REM & RESURF
WB 25TH AVE ENTRANCE RAMP TO WB I-290	4	12	48	5	HMA	HMA SURF REM & RESURF

LOCATIONS FOR INTERSTATE 290 / INTERSTATE 355 / IL 53	REPAIR LENGTH (FT)	REPAIR WIDTH (FT)	REPAIR AREA (SF)	REPAIR AREA (SY)	SURFACE TYPE	REPAIR WORK
THORNDALE AVE ENTRANCE RAMP TO EB I-290	300	12	3600	400	HMA	HMA SURF REM & RESURF
LAKE STREET ENTRANCE RAMP TO NB I-355	100	12	1200	133	HMA	HMA SURF REM & RESURF
SB I-355 TO WB LAKE STREET EXIT RAMP	120	12	1440	160	HMA	HMA SURF REM & RESURF
NB IL 53 TO NORTHWEST HWY EXIT RAMP	6	12	72	8	HMA	HMA SURF REM & RESURF
	6	12	72	8	HMA	HMA SURF REM & RESURF
NORTHWEST HWY ENTRANCE RAMP TO SB IL 53	5	12	60	7	HMA	HMA SURF REM & RESURF
	5	12	60	7	HMA	HMA SURF REM & RESURF
RAND ROAD ENTRANCE RAMP TO SB IL 53	6	12	72	8	HMA	HMA SURF REM & RESURF
	6	12	72	8	HMA	HMA SURF REM & RESURF
	6	12	72	8	HMA	HMA SURF REM & RESURF

FILE NAME =
 es\projects\136508\design_aa.dgn

USER NAME = wilgreendp	DESIGNED -	REVISED -
PLOT SCALE = 100.0000' / IN.	DRAWN -	REVISED -
PLOT DATE = 6/25/2008	CHECKED -	REVISED -
	DATE -	REVISED -

**STATE OF ILLINOIS
 DEPARTMENT OF TRANSPORTATION**

PATCHING SCHEDULE

SCALE: SHEET NO. OF SHEETS STA. TO STA.

F.A. RTE.	SECTION	COUNTY	TOTAL SHEETS	SHEET NO.
VAR.	2008-049 PP	COOK & DUPAGE	13	5
FED. ROAD DIST. NO.			ILLINOIS FED. AID PROJECT	
			CONTRACT NO. 60E98	

LOCATIONS FOR INTERSTATE 90 (KENNEDY EXPY)	REPAIR LENGTH (FT)	REPAIR WIDTH (FT)	REPAIR AREA (SF)	REPAIR AREA (SY)	SURFACE TYPE	REPAIR WORK
WB FOSTER AVENUE ENTRANCE RAMP TO I-90	100	12	1200	133	HMA	HMA SURF REM & RESURF
SB CUMBERLAND AVER AMP TO WB I-90	250	12	3000	333	HMA	HMA SURF REM & RESURF
EB I-90 RAMP TO AUSTIN AVENUE	70	12	840	93	PCC	CLASS D PATCH

LOCATIONS FOR INTERSTATE 190	REPAIR LENGTH (FT)	REPAIR WIDTH (FT)	REPAIR AREA (SF)	REPAIR AREA (SY)	SURFACE TYPE	REPAIR WORK
WB I-190 EXIT RAMP TO RIVER ROAD	125	12	1500	167	HMA	HMA SURF REM & RESURF
RIVER ROAD ENTRANCE RAMP TO WB I-190	100	12	1200	133	HMA	HMA SURF REM & RESURF

FILE NAME =
 c:\projects\136508\design_aa.dgn

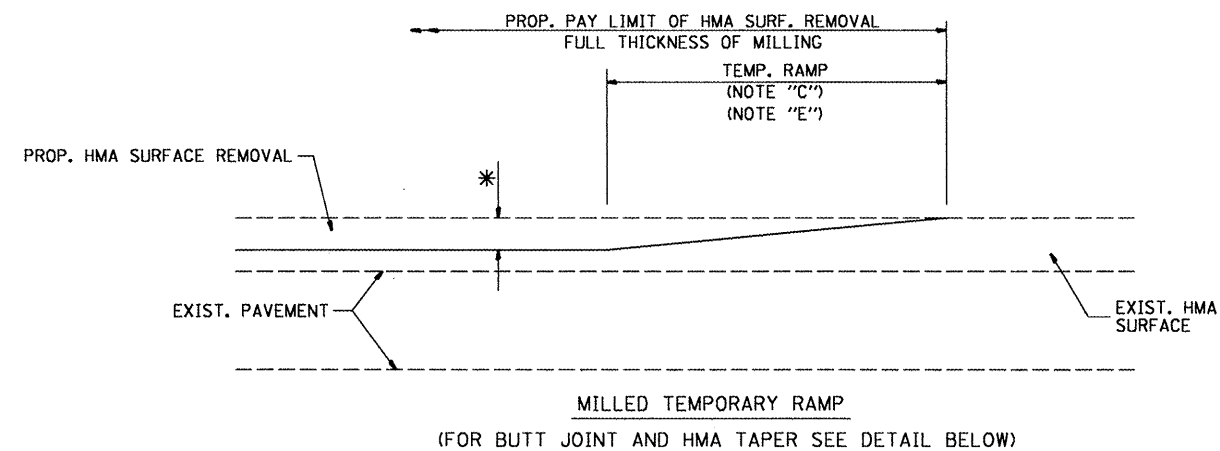
USER NAME = wilgreendp	DESIGNED -	REVISED -
PLOT SCALE = 100.0000' / IN.	DRAWN -	REVISED -
PLOT DATE = 6/25/2008	CHECKED -	REVISED -
	DATE -	REVISED -

**STATE OF ILLINOIS
 DEPARTMENT OF TRANSPORTATION**

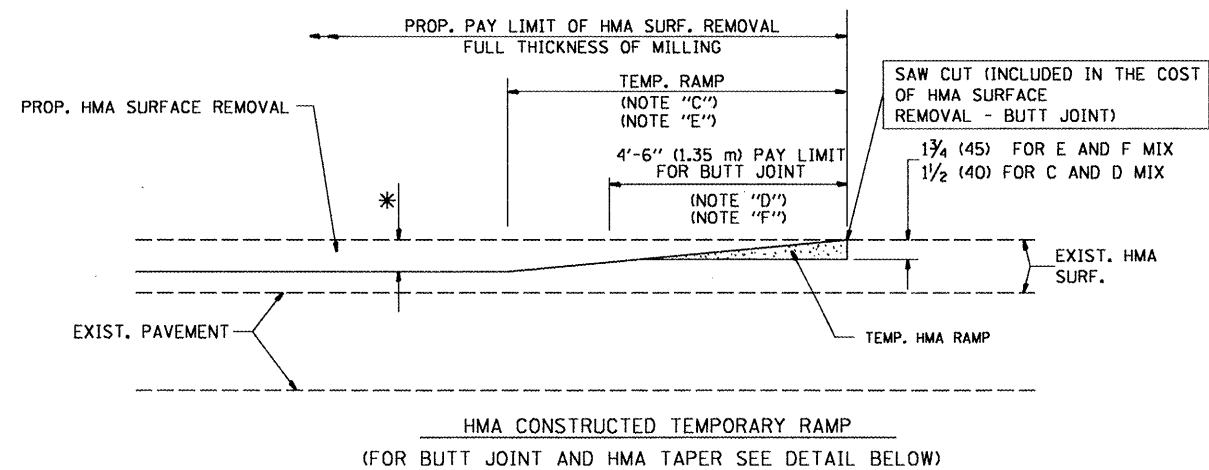
PATCHING SCHEDULE

SCALE: SHEET NO. OF SHEETS STA. TO STA.

F.A. RTE.	SECTION	COUNTY	TOTAL SHEETS	SHEET NO.
VAR.	2008-049 PP	COOK & DUPAGE	13	6
FED. ROAD DIST. NO.			ILLINOIS FED. AID PROJECT	
			CONTRACT NO. 60E98	

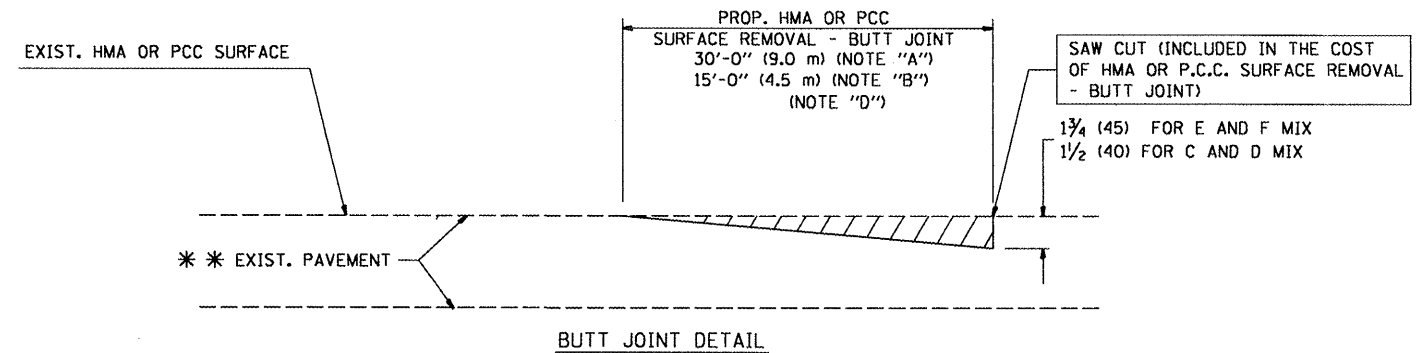


OPTION 1

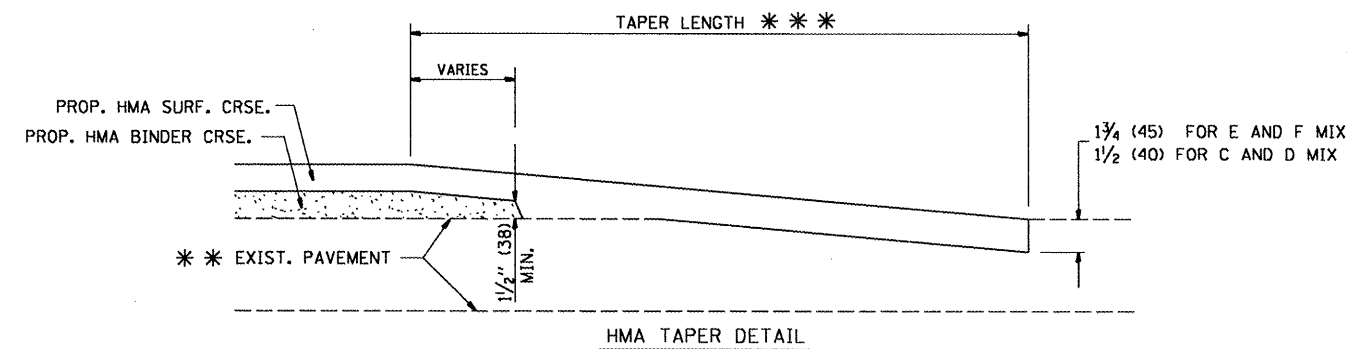


OPTION 2

TYPICAL TEMPORARY RAMP



BUTT JOINT DETAIL



HMA TAPER DETAIL

TYPICAL BUTT JOINT AND HMA TAPER FOR RESURFACING ONLY

*** PC CONCRETE, HMA OR HMA RESURFACED PAVEMENT.

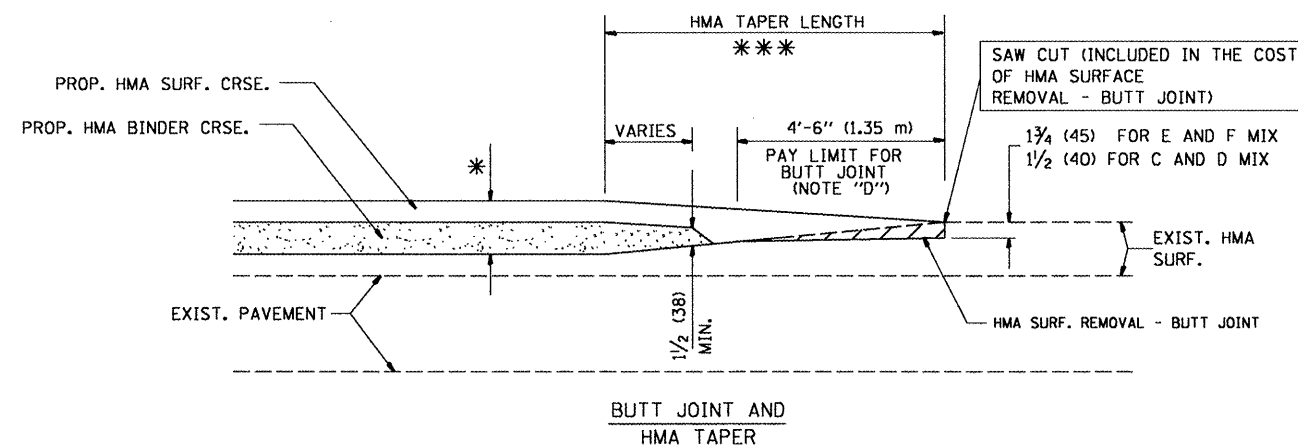
NOTES

- A: MAINLINE ROADWAYS AND MAJOR SIDE ROADS.
 - B: MINOR SIDE ROADS.
 - C: THE TEMP. RAMP SHALL BE CONSTRUCTED IMMEDIATELY UPON REMOVAL OF THE EXISTING HMA SURFACE.
 - D: THE BUTT JOINT SHALL BE CONSTRUCTED IMMEDIATELY PRIOR TO PLACING THE PROPOSED HMA COURSES.
 - E: TAPER THE TEMP. RAMP AT A RATE OF 3'-0" (900 mm) PER 1 INCH (25 mm) OF MILLING THICKNESS.
 - F: INSTALLATION AND REMOVAL OF THE 4'-6" (1.35 m) TEMP. RAMP IS INCLUDED IN COST OF HMA SURFACE REMOVAL - BUTT JOINT
 - G: SEE ARTICLE 406.08 AND 406.14 OF THE STANDARD SPECIFICATIONS FOR "HMA AND/OR PCC SURFACE REMOVAL, BUTT JOINT".
- * SEE TYPICAL SECTIONS FOR MILLING THICKNESS.
- *** 20'-0" (6.1 m) PER 1 (25) RESURFACING (NOTE "A")
 10'-0" (3.0 m) PER 1 (25) RESURFACING (NOTE "B")

BASIS OF PAYMENT:

THE BUTT JOINT WILL BE PAID FOR AT THE CONTRACT UNIT PRICE PER SQUARE YARD (SQUARE METER) FOR "HOT-MIX ASPHALT SURFACE REMOVAL - BUTT JOINT" OR FOR "PORTLAND CEMENT CONCRETE SURFACE REMOVAL - BUTT JOINT".

ALL DIMENSIONS ARE IN INCHES (MILLIMETERS) UNLESS OTHERWISE SHOWN.



BUTT JOINT AND HMA TAPER

TYPICAL BUTT JOINT AND HMA TAPER FOR MILLING AND RESURFACING

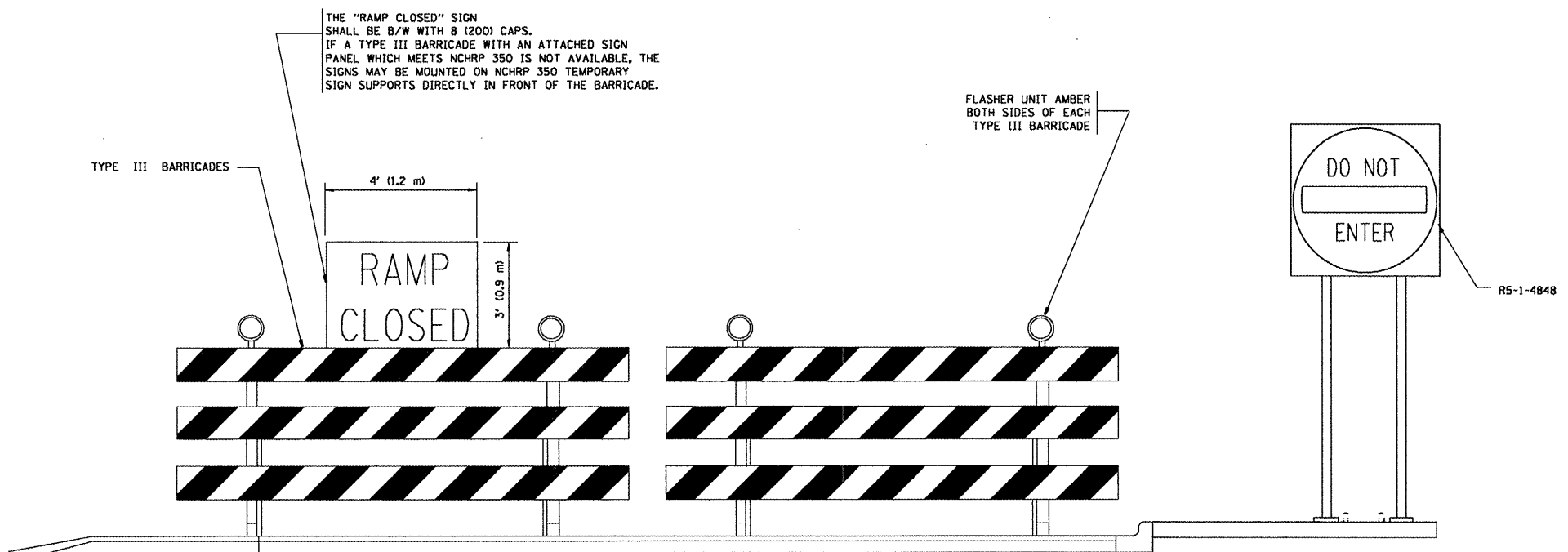
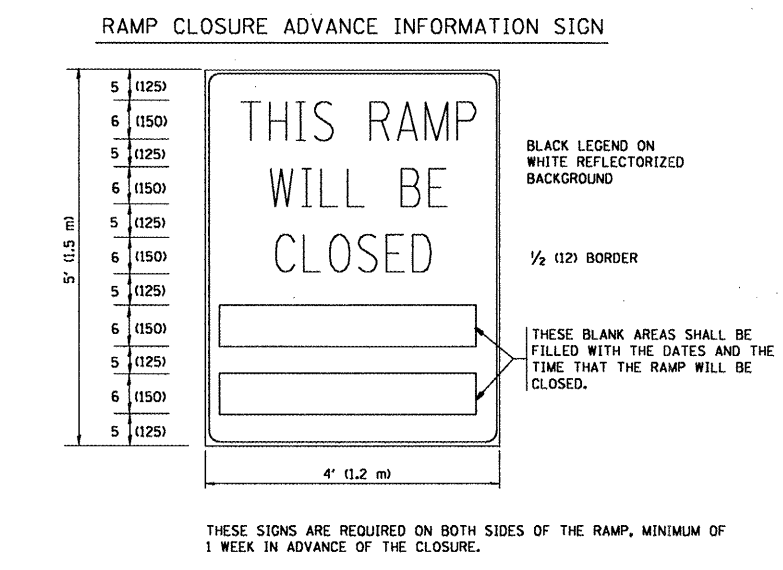
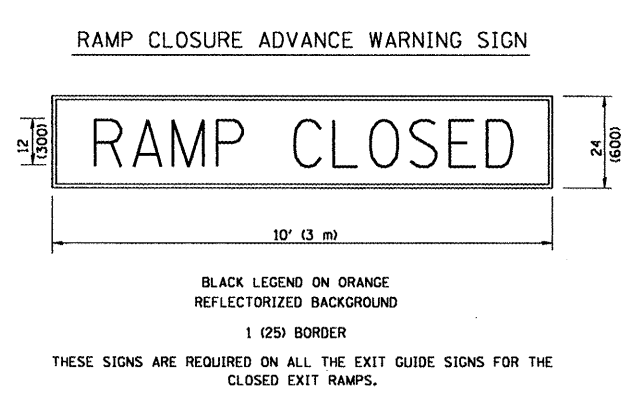
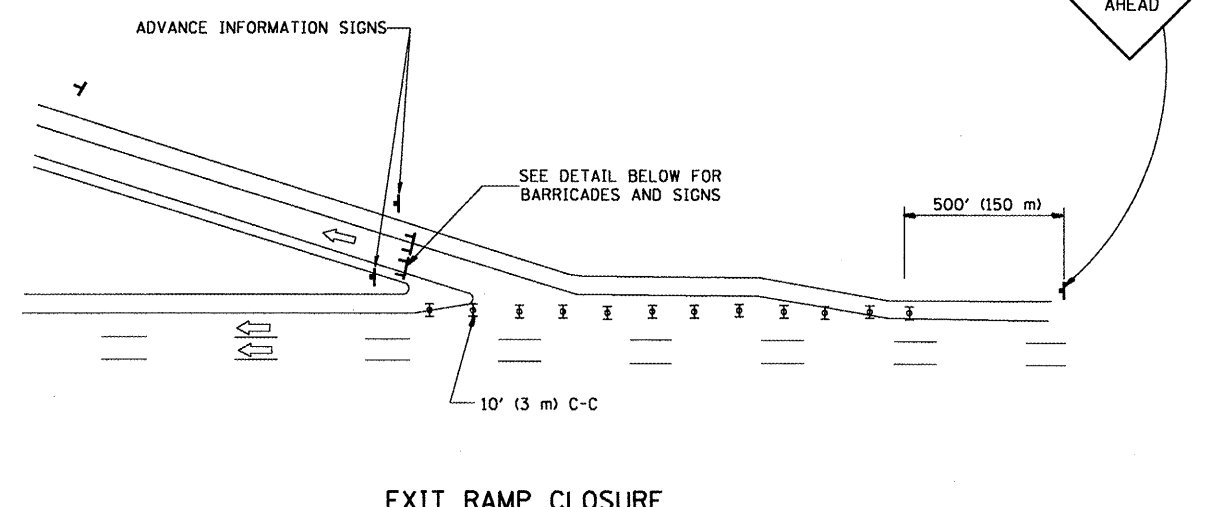
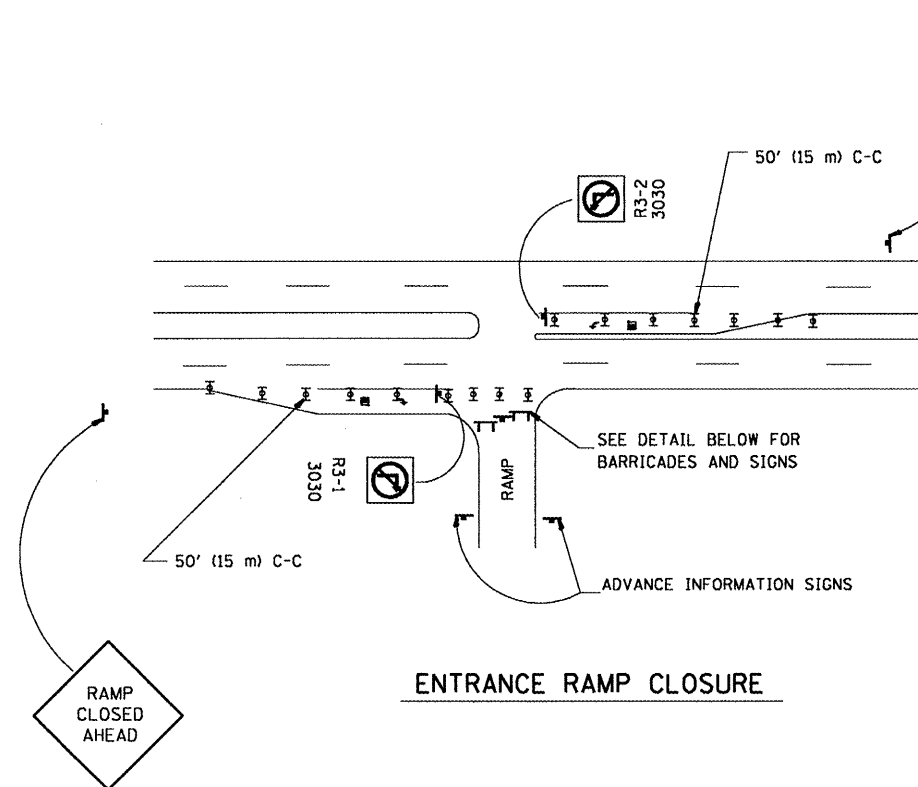
**STATE OF ILLINOIS
DEPARTMENT OF TRANSPORTATION**

**BUTT JOINT AND
HMA TAPER DETAILS**

SCALE: NONE SHEET NO. 1 OF 1 SHEETS STA. TO STA.

F.A. RTE.	SECTION	COUNTY	TOTAL SHEETS	SHEET NO.
VAR.	2008-049 PP	COOK & DUP.	13	7
BD400-05 BD32		CONTRACT NO. 60E98		
FED. ROAD DIST. NO. 1 (ILLINOIS) FED. AID PROJECT				

FILE NAME =	USER NAME = am1thk1	DESIGNED - M. DE YONG	REVISED - R. SHAH 10-25-94
DETAILS\bd32.dgn		DRAWN -	REVISED - A. ABBAS 03-21-97
PLOT SCALE = 99.9998 / IN.		CHECKED -	REVISED - M. GOMEZ 04-06-01
PLOT DATE = 6/24/2008		DATE - 06-13-90	REVISED - R. BORO 01-01-07



THE "RAMP CLOSED" SIGN SHALL BE B/W WITH 8 (200) CAPS. IF A TYPE III BARRICADE WITH AN ATTACHED SIGN PANEL WHICH MEETS NCHRP 350 IS NOT AVAILABLE, THE SIGNS MAY BE MOUNTED ON NCHRP 350 TEMPORARY SIGN SUPPORTS DIRECTLY IN FRONT OF THE BARRICADE.

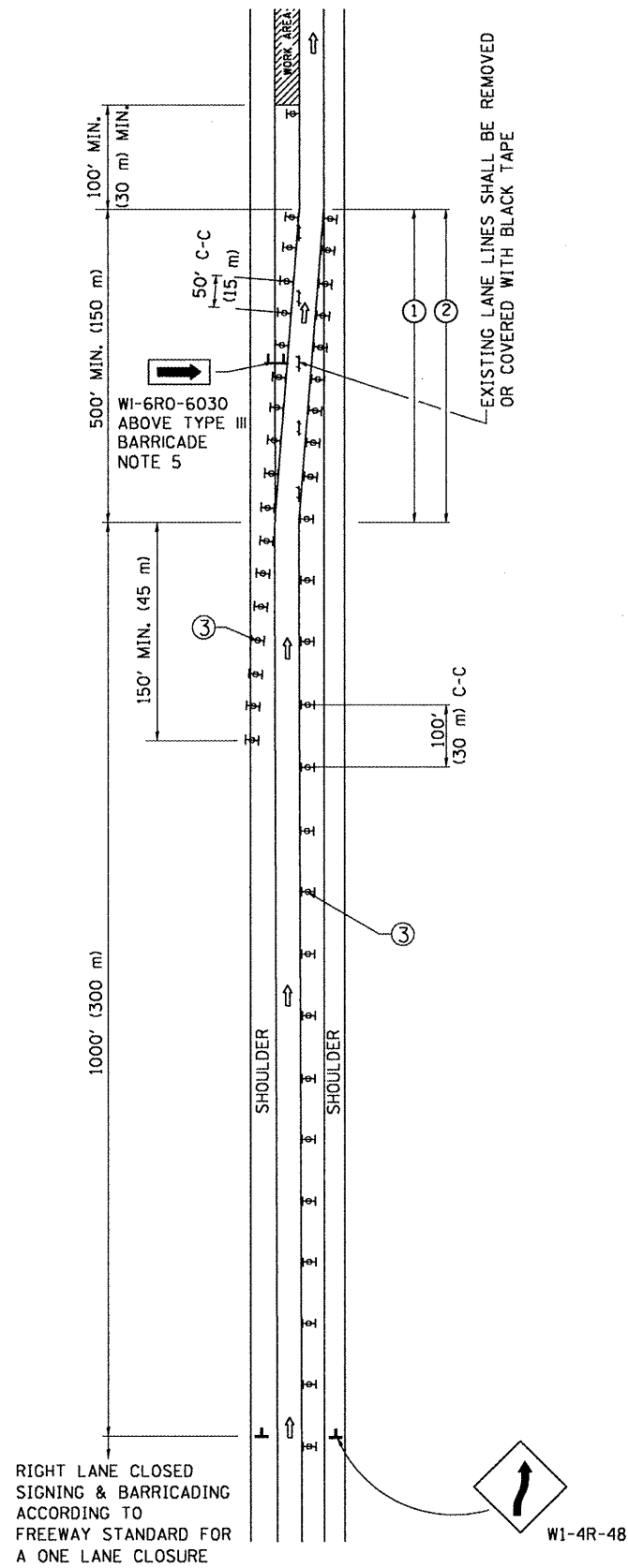
- SYMBOLS**
- ☒ TYPE II BARRICADE, DRUM OR VERTICAL BARRICADE WITH STEADY BURN MONO-DIRECTIONAL LIGHT
 - ☒ TYPE III BARRICADE WITH FLASHING LIGHT

- GENERAL NOTES:**
1. CONES MAY BE SUBSTITUTED FOR DRUMS OR TYPE II BARRICADES DURING DAY OPERATIONS. CONES SHALL BE A MINIMUM OF 28 (700) HIGH.
 2. STEADY BURN LIGHTS WILL NOT BE REQUIRED FOR DAY OPERATIONS.
 3. A FLAGGER SHALL BE POSITIONED AT EACH CLOSED RAMP THAT IS OPEN TO CONSTRUCTION VEHICLES.
 4. ALL ROUTE MARKERS AND TRAILBLAZER ASSEMBLIES WHICH DIRECT MOTORISTS TO A CLOSED ENTRANCE RAMP SHALL BE COVERED.
 5. THE SIGNING AND BARRICADING WHICH IS REQUIRED BY THIS DETAIL SHALL BE INCLUDED IN THE COST OF TRAFFIC CONTROL AND PROTECTION (EXPRESSWAYS).
 6. AUTHORIZATION FROM THE DISTRICT'S BUREAU OF TRAFFIC IS REQUIRED FOR ALL RAMP CLOSURES.
 7. THE RAMP CLOSURE ADVANCE INFORMATION SIGNS SHALL BE ERECTED IF THE CLOSURE TIME EXCEEDS TWENTY-FOUR (24) HOURS. ADDITIONAL ADVANCE WARNING SIGNS ON EXIT GUIDE SIGNING WILL BE REQUIRED FOR EXIT RAMP CLOSURES THAT EXCEED TWENTY-FOUR (24) HOURS IN LENGTH.

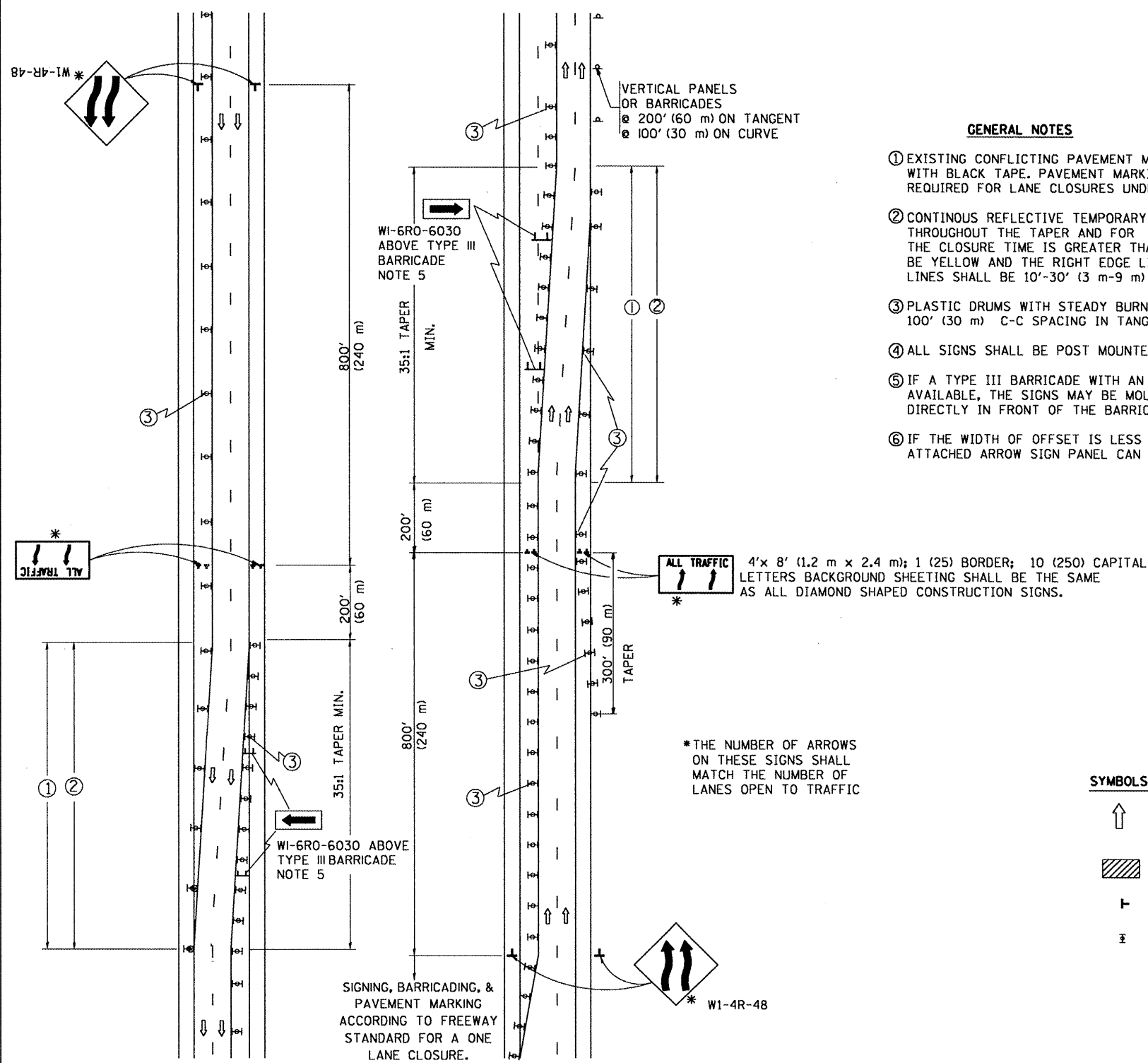
ALL DIMENSIONS ARE IN INCHES (MILLIMETERS) UNLESS OTHERWISE SHOWN.

FILE NAME =	USER NAME = smthkl	DESIGNED - DWS	REVISED - DWS 12-94	STATE OF ILLINOIS DEPARTMENT OF TRANSPORTATION	FREWAY ENTRANCE AND EXIST RAMP CLOSURE DETAILS		F.A. RTE.	SECTION	COUNTY	TOTAL SHEETS	SHEET NO.
DETAILS\tc08.dgn	DRAWN -	REVISED - DWS/JAF 12-02	REVISED - JAF 02-06		VAR.	2008-049 PP	COOK & DUP.	13	8		
PLOT SCALE = 100.000' / IN.	CHECKED -	REVISED - JAF 02-06	REVISED - SPB 01-07		TC-08		CONTRACT NO. 60E98				
PLOT DATE = 6/24/2008	DATE - 02-83	REVISED - SPB 01-07	SCALE: NONE		SHEET NO. 1 OF 1 SHEETS	STA.	TO STA.	FED. ROAD DIST. NO. 1 ILLINOIS FED. AID PROJECT			

SINGLE LANE WEAVE



MULTI-LANE WEAVE



GENERAL NOTES

- EXISTING CONFLICTING PAVEMENT MARKING LINES SHALL BE REMOVED OR COVERED WITH BLACK TAPE. PAVEMENT MARKING REMOVAL OR BLACK TAPE SHALL NOT BE REQUIRED FOR LANE CLOSURES UNDER 24 HOURS IN DURATION.
- CONTINUOUS REFLECTIVE TEMPORARY PAVEMENT MARKING TAPE SHALL BE PLACED THROUGHOUT THE TAPER AND FOR 300' (90 m) ALONG SIDE THE WORK AREA WHERE THE CLOSURE TIME IS GREATER THAN FOURTEEN DAYS. THE LEFT EDGE LINE SHALL BE YELLOW AND THE RIGHT EDGE LINE SHALL BE WHITE. FOR MULTI-LANE WEAVE LANE LINES SHALL BE 10'-30' (3 m-9 m) SKIP DASH, WHITE.
- PLASTIC DRUMS WITH STEADY BURN LIGHTS AT 50' (15 m) C-C SPACING IN TAPERS AND 100' (30 m) C-C SPACING IN TANGENTS.
- ALL SIGNS SHALL BE POST MOUNTED IF THE CLOSURE TIME EXCEEDS FOUR DAYS.
- IF A TYPE III BARRICADE WITH AN ATTACHED SIGN PANEL WHICH MEETS NCHRP 350 IS NOT AVAILABLE, THE SIGNS MAY BE MOUNTED ON NCHRP 350 TEMPORARY SIGN SUPPORTS DIRECTLY IN FRONT OF THE BARRICADE.
- IF THE WIDTH OF OFFSET IS LESS THAN 6' THEN THE TYPE III BARRICADE WITH ATTACHED ARROW SIGN PANEL CAN BE ELIMINATED IN THE TAPER AREAS.

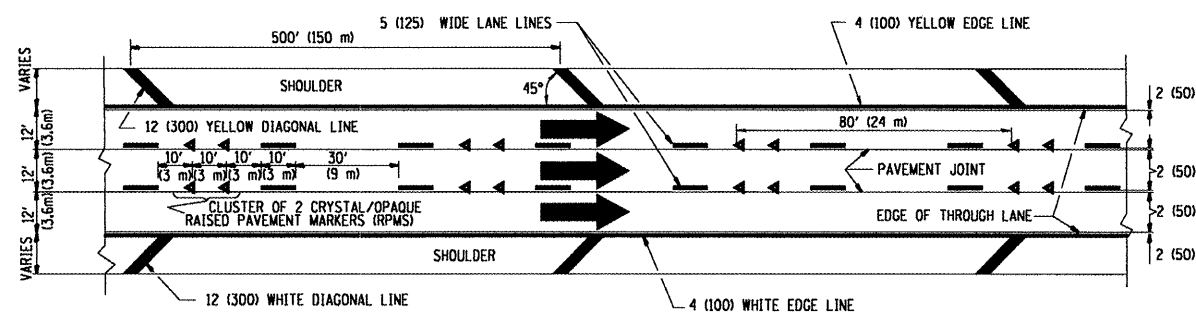
SYMBOLS

- DIRECTION OF TRAFFIC
- WORK AREA
- SIGN ON PORTABLE OR PERMANENT SUPPORT
- TYPE II BARRICADE, DRUM OR VERTICAL BARRICADE WITH MONO-DIRECTIONAL STEADY BURNING LIGHT

ALL DIMENSIONS ARE IN INCHES (MILLIMETERS) UNLESS OTHERWISE SHOWN

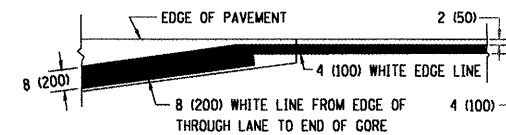
FILE NAME =	USER NAME = smthkl	DESIGNED - DWS	REVISED - DWS 11-96	STATE OF ILLINOIS DEPARTMENT OF TRANSPORTATION	TRAFFIC CONTROL DETAILS FOR FREEWAY SINGLE & MULTI-LANE WEAVE			F.A. RTE. *	SECTION	COUNTY	TOTAL SHEETS	SHEET NO.	
\\dist\ntfa2\users\smthkl\Desktop\CADD	DETAILS\to03.dgn	DRAWN -	REVISED - JAF 01-03		SCALE: NONE	SHEET NO. 1 OF 1 SHEETS	STA.	TO STA.	VAR.	2008-049 PP	COOK & DUP.	13	9
PLOT SCALE = 1/8" = 1'-0"		CHECKED -	REVISED - JAF 02-06					TC-09		CONTRACT NO. 60E98			
PLOT DATE = 6/24/2008		DATE - 02-07	REVISED - SPB 01-07					FED. ROAD DIST. NO. 1 ILLINOIS FED. AID PROJECT					

THE DIAGONAL LINES SHALL BE SPACED AT 40' (12 m) C-C ACROSS ALL STRUCTURES WHICH ARE 500' (150 m) OR LESS IN LENGTH
THE DIAGONAL LINES ARE NOT REQUIRED ON SHOULDERS WHICH ARE 6' (1.8 m) OR LESS IN WIDTH

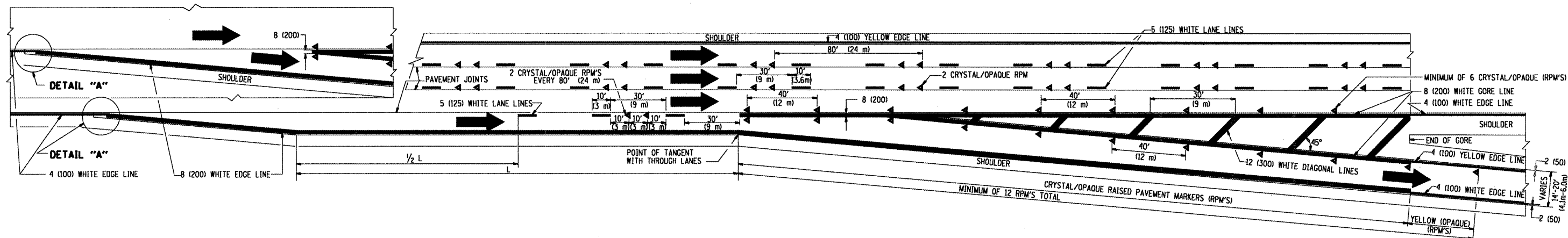


NOTES:

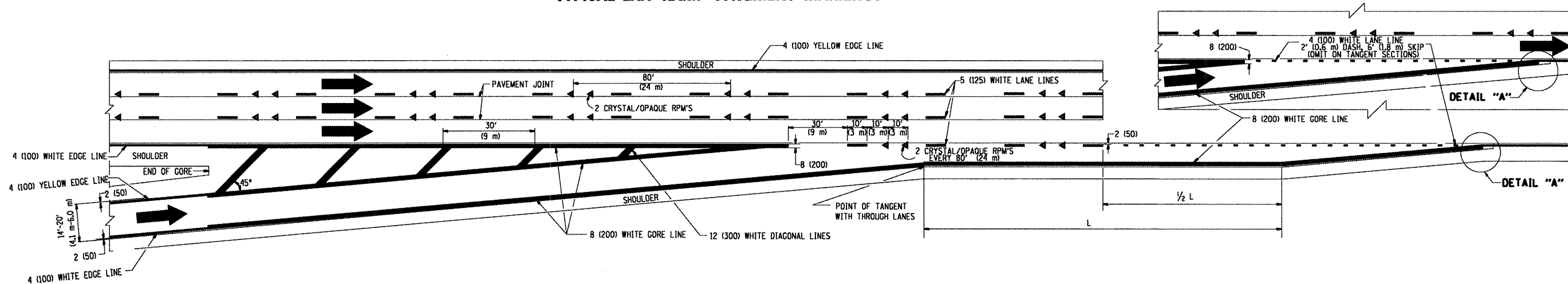
1. THERMO PLASTIC PAVEMENT MARKING LINE SHALL BE USED FOR THE EDGE LINES, GORE LINES, AND DIAGONAL LINES ON BITUMINOUS PAVEMENT ONLY.
2. PREFORMED PLASTIC TYPE B PAVEMENT MARKING LINE SHALL BE USED FOR ALL LANE LINES ON BITUMINOUS PAVEMENT
3. POLYUREA PAVEMENT MARKING SHALL BE USED FOR ALL MARKINGS ON PCC



TYPICAL EDGE LINES & LANE LINES

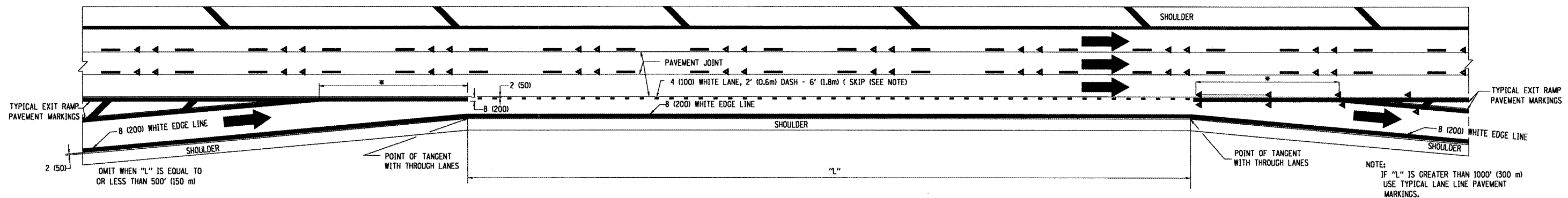


TYPICAL EXIT RAMP PAVEMENT MARKINGS

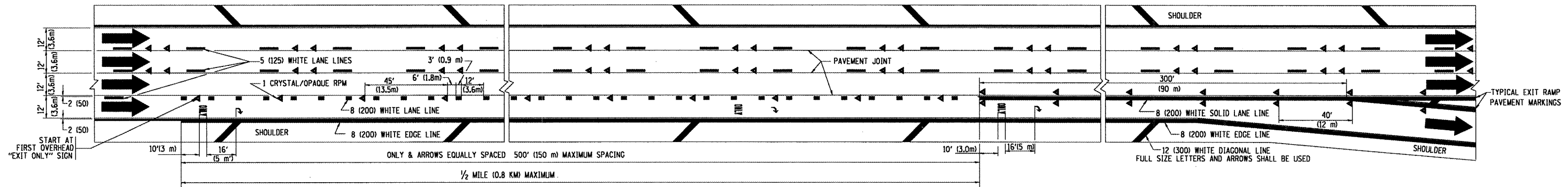


TYPICAL ENTRANCE RAMP PAVEMENT MARKINGS

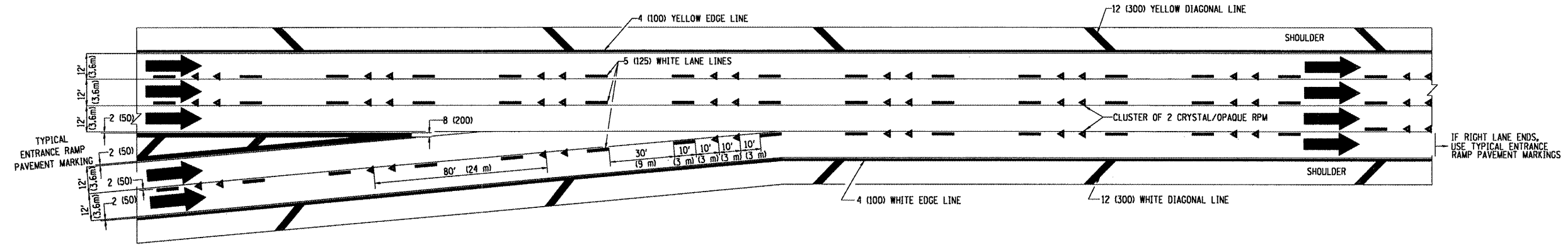
FILE NAME =	USER NAME = amsthl	DESIGNED - D.W.S.	REVISED - A.H. 03-96	STATE OF ILLINOIS DEPARTMENT OF TRANSPORTATION	MULTI-LANE FREEWAY PAVEMENT MARKING DETAILS			F.A. RTE.	SECTION	COUNTY	TOTAL SHEETS	SHEET NO.	
\\dist\ntf\2\users\amsthl\Desk top\CADD	DETAILS\tcl2.dgn	DRAWN -	REVISED - D.W.S. 07-96		SCALE: NONE	SHEET NO. 1 OF 2 SHEETS	STA.	TO STA.	VAR.	2008-049 PP	COOK & DUP.	13	10
PLOT SCALE = 100,000' / IN.	PLOT DATE = 6/24/2008	CHECKED -	REVISED - J.A.F. 02-06					TC-12		CONTRACT NO. 60E98			
		DATE - 01-90	REVISED - S.P.B. 01-07		FED. ROAD DIST. NO. 1 ILLINOIS FED. AID PROJECT								



TYPICAL ENTRANCE/EXIT RAMP COMBINATION PAVEMENT MARKINGS



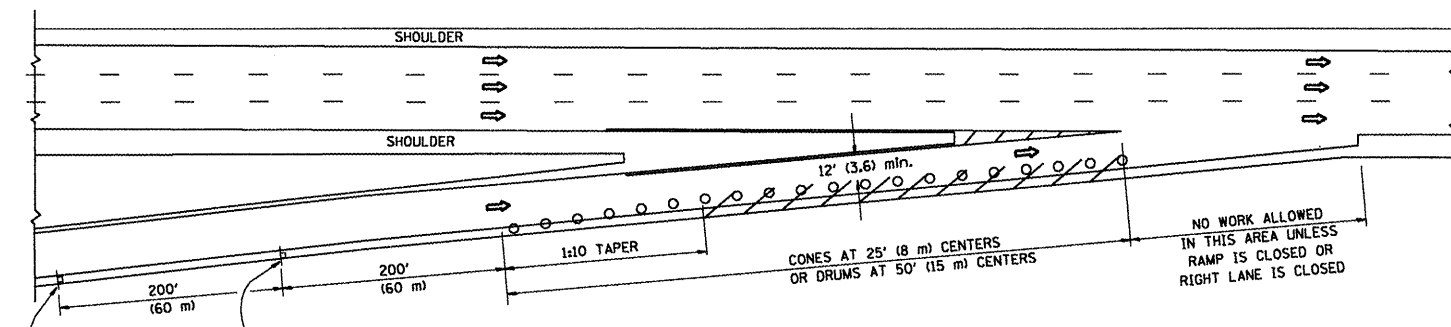
TYPICAL EXIT ONLY LANE PAVEMENT MARKINGS



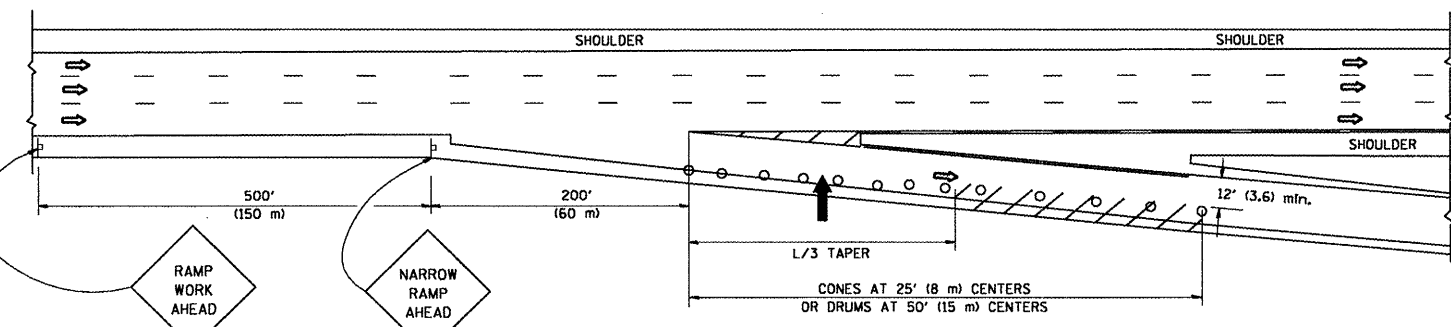
TYPICAL TWO LANE ENTRANCE RAMP PAVEMENT MARKINGS

FILE NAME =	USER NAME = smthkl	DESIGNED - D.W.S.	REVISED - A.H. 03-96	STATE OF ILLINOIS DEPARTMENT OF TRANSPORTATION	MULTI-LANE FREEWAY PAVEMENT MARKING DETAILS			F.A. RTE.	SECTION	COUNTY	TOTAL SHEETS	SHEET NO.	
DETAILS\1\2\dgn	DETAILS\1\2\dgn	DRAWN -	REVISED - D.W.S. 07-96		SCALE: NONE	SHEET NO. 1 OF 2 SHEETS	STA.	TO STA.	VAR.	2008-049 PP	COOK & DUP.	13	11
PLOT SCALE = 100.000 / IN.	PLOT DATE = 6/24/2008	CHECKED -	REVISED - J.A.F. 02-06					TC-12		CONTRACT NO. 60E98			
		DATE - 01-90	REVISED - S.P.B. 01-07		FED. ROAD DIST. NO. 1 ILLINOIS FED. AID PROJECT								

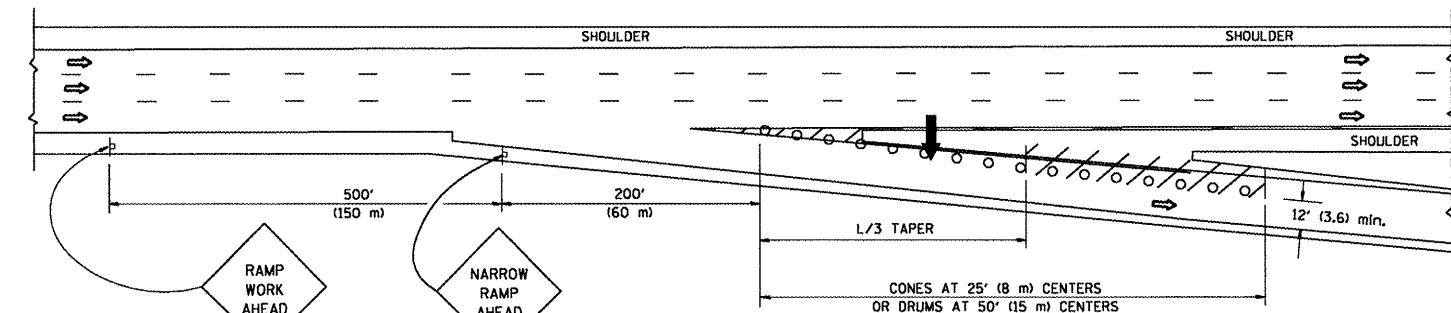
PARTIAL RAMP CLOSURE DETAILS



TYPICAL ENTRANCE RAMP



TYPICAL EXIT RAMP



TYPICAL EXIT RAMP

SYMBOLS

- ARROWBOARD
- WORK AREA
- SIGN ON PORTABLE OR PERMANENT SUPPORT
- FLAGGER WITH CONTROL SIGN
- TYPE II BARRICADE, DRUM OR VERTICAL BARRICADE WITH STEADY BURN MONO-DIRECTIONAL LIGHT
- CONE, DRUM OR BARRICADE

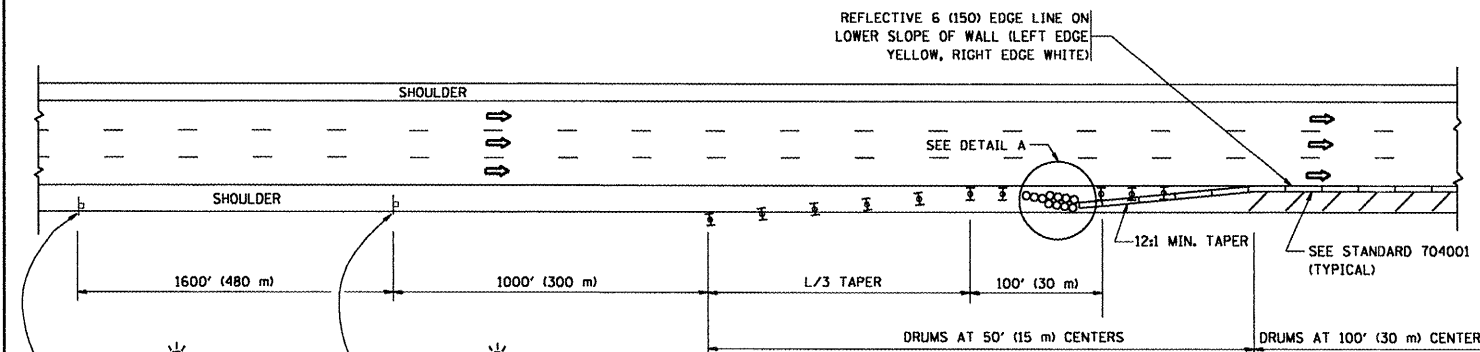
GENERAL NOTES

1. THE "L" DISTANCE EQUALS:

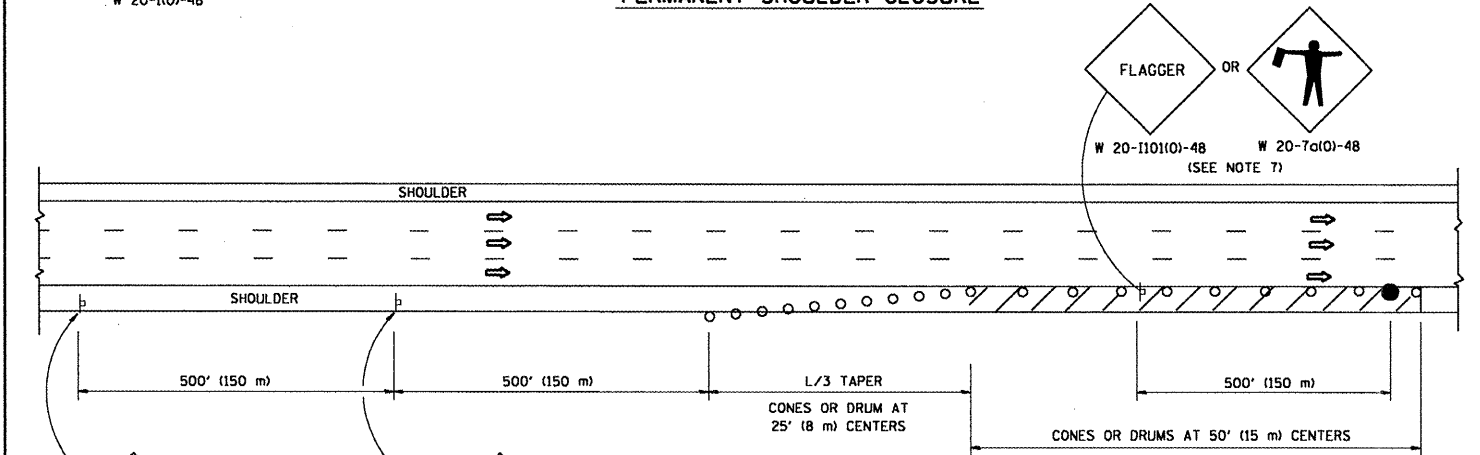
SPEED LIMIT	FORMULAS
45 mph (80 km/h) OR GREATER:	METRIC: $L = 0.65(W)(S)$ ENGLISH: $L = (W)(S)$

W = WIDTH OF OFFSET IN FEET (METERS)
S = NORMAL POSTED SPEED MPH (KM/H)
2. PLASTIC DRUMS WITH HIGH PERFORMANCE REFLECTIVE SHEETING AND STEADY BURNING LIGHTS ARE REQUIRED FOR ALL NIGHTTIME CLOSURES.
3. ALL SIGNS SHALL BE POST MOUNTED IF THE CLOSURE TIME EXCEEDS FOUR DAYS.
4. FLASHING LIGHTS SHALL BE USED DURING THE HOURS OF DARKNESS AND SHALL BE INSTALLED ABOVE THE FIRST TWO SETS OF SIGNS.

SHOULDER CLOSURE DETAILS

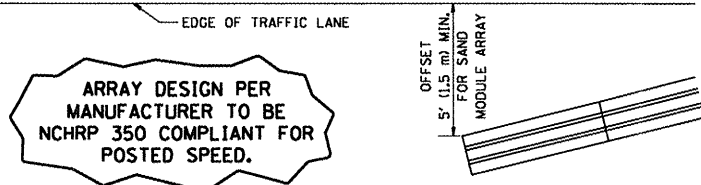


PERMANENT SHOULDER CLOSURE



DAYTIME SHOULDER CLOSURE

THIS DETAIL IS USED WHERE:
1. VEHICLES, EQUIPMENT, WORKERS OR THEIR ACTIVITIES ENCR OACH IN AN AREA CLOSER THAN 15' (4.5 m) TO THE EDGE OF PAVEMENT FOR A PERIOD IN EXCESS OF 15 MINUTES.



ARRAY DESIGN PER MANUFACTURER TO BE NCHRP 350 COMPLIANT FOR POSTED SPEED.

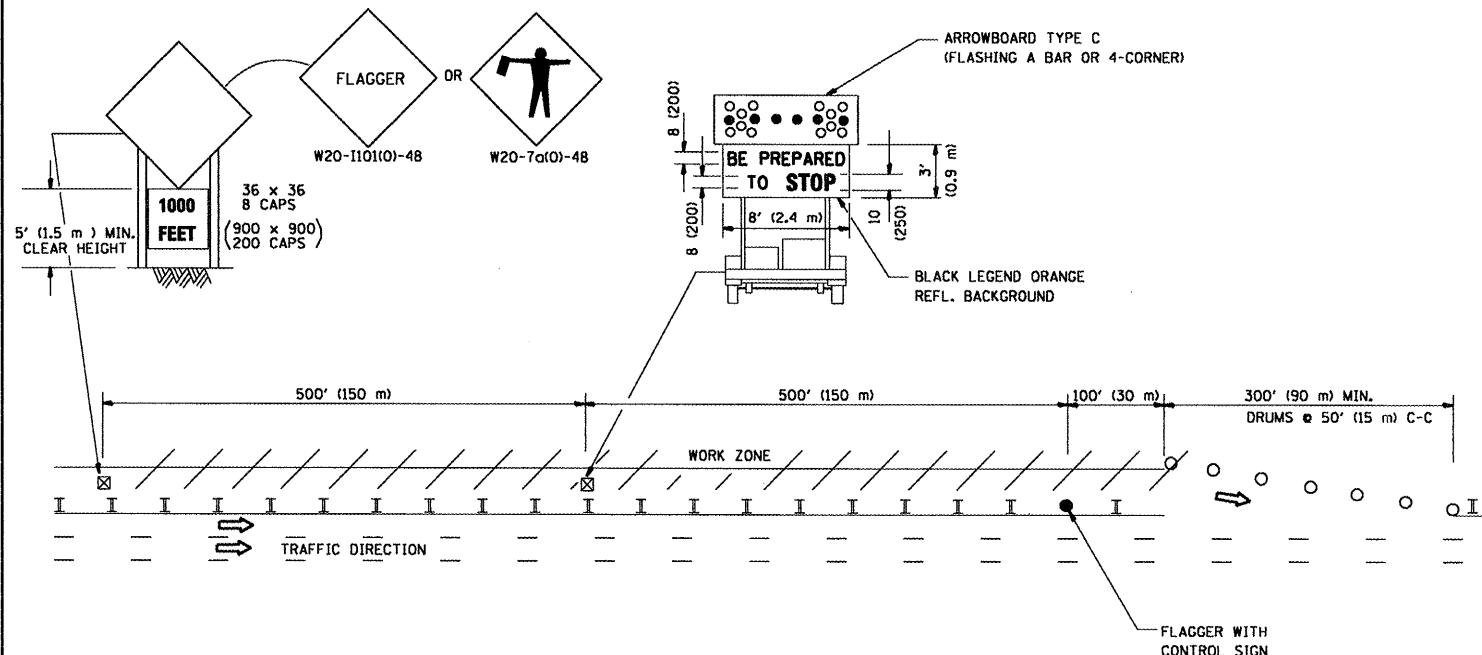
DETAIL "A"
IMPACT ATTENUATOR, TEMPORARY
(SEE NOTE 5)

ALL DIMENSIONS ARE IN INCHES (MILLIMETERS) UNLESS OTHERWISE SHOWN.

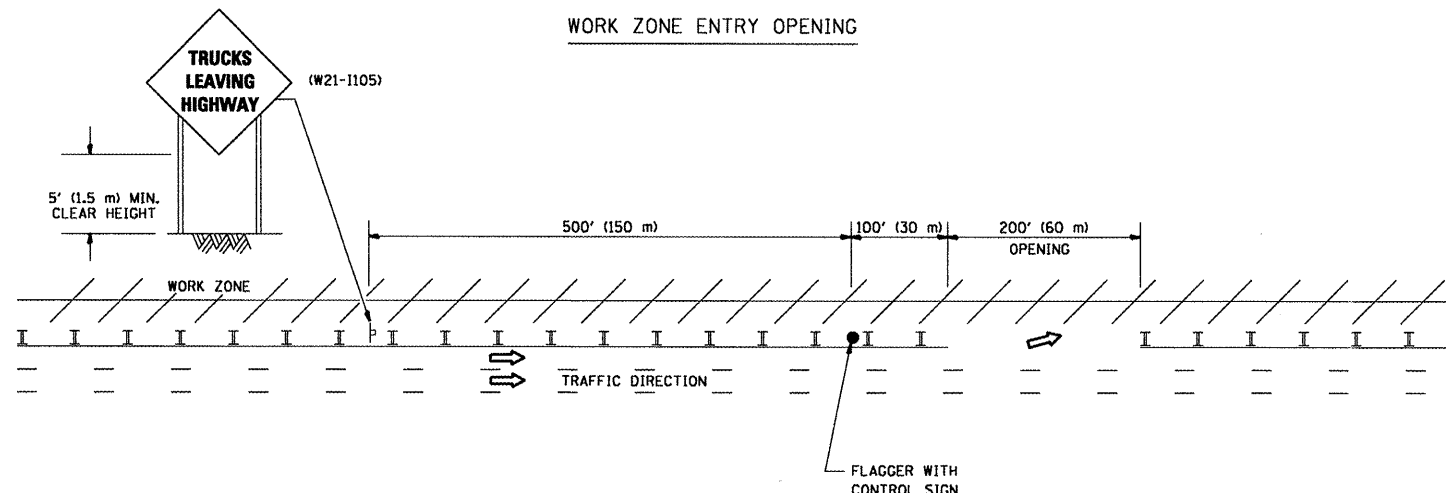
FILE NAME =	USER NAME = am1thk1	DESIGNED -	REVISED - J.A.F. 12-02	STATE OF ILLINOIS DEPARTMENT OF TRANSPORTATION	TRAFFIC CONTROL DETAILS FOR FREEWAY SHOULDER CLOSURES AND PARTIAL RAMP CLOSURES	F.A. RTE.:	SECTION	COUNTY	TOTAL SHEETS	SHEET NO.	
\\d1st1nf2\users\am1thk1\Desktop\CADD	DETAILS\17.dgn	DRAWN - D.W.S.	REVISED - 04-03		SCALE: NONE	SHEET NO. 1 OF 1 SHEETS	VAR.	2008-049 PP	COOK & DUP.	13	12
	PLOT SCALE = 1/8" = 1'-0"	CHECKED -	REVISED - J.A.F. 12-06		STA.	TO STA.	TC-17		CONTRACT NO. 60E98		
	PLOT DATE = 6/24/2008	DATE - 11-96	REVISED - S.P.B. 01-07				FED. ROAD DIST. NO. 1 ILLINOIS FED. AID PROJECT				

SIGNING FOR FLAGGING OPERATIONS AT WORK ZONE OPENINGS

WORK ZONE EXIT OPENING



WORK ZONE ENTRY OPENING



NOTES:

1. The Arrowboard, the Flagger Ahead trailer mounted sign, and the Trucks Leaving Highway sign shall be removed or turned away from traffic and the exit and entry openings shall be closed when the flagging operation ceases.
2. Work Zone Exit Openings should be a minimum of one half mile apart.
3. Exiting the work zone at any place other than at a Work Zone Exit Opening will be prohibited.
4. All vehicles shall enter the work zone at entry openings, using their turn signals to warn motorists

ALL DIMENSIONS ARE IN INCHES (MILLIMETERS) UNLESS OTHERWISE SHOWN

FILE NAME =	USER NAME = amsthk1	DESIGNED -	REVISED - D.W.S. 08-98	STATE OF ILLINOIS DEPARTMENT OF TRANSPORTATION	SIGNING FOR FLAGGING OPERATIONS AT WORK ZONE OPENINGS			F.A. -	SECTION	COUNTY	TOTAL SHEETS	SHEET NO.	
DETAILS\ctc18.dgn	DETAILS\ctc18.dgn	DRAWN -	REVISED - J.A.F. 04-03		SCALE: NONE	SHEET NO. 1 OF 1 SHEETS	STA.	VAR.	2008-049 PP	COOK & DUP.	13	13	
PLOT SCALE = 100.000' / IN.		CHECKED -	REVISED - J.A.F. 02-06						TC-18	CONTRACT NO. 60E98			
PLOT DATE = 6/24/2008		DATE -	REVISED - S.P.B. 01-07						FED. ROAD DIST. NO. 1	ILLINOIS	FED. AID PROJECT		