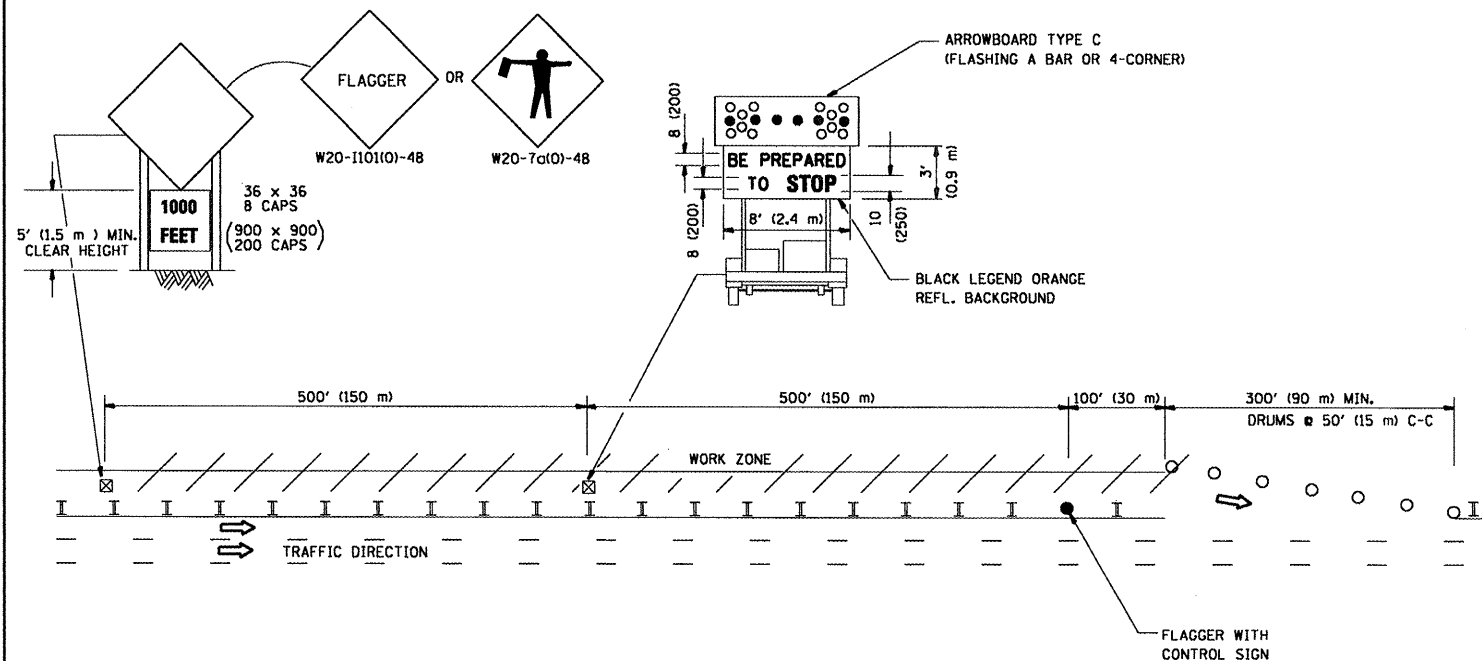
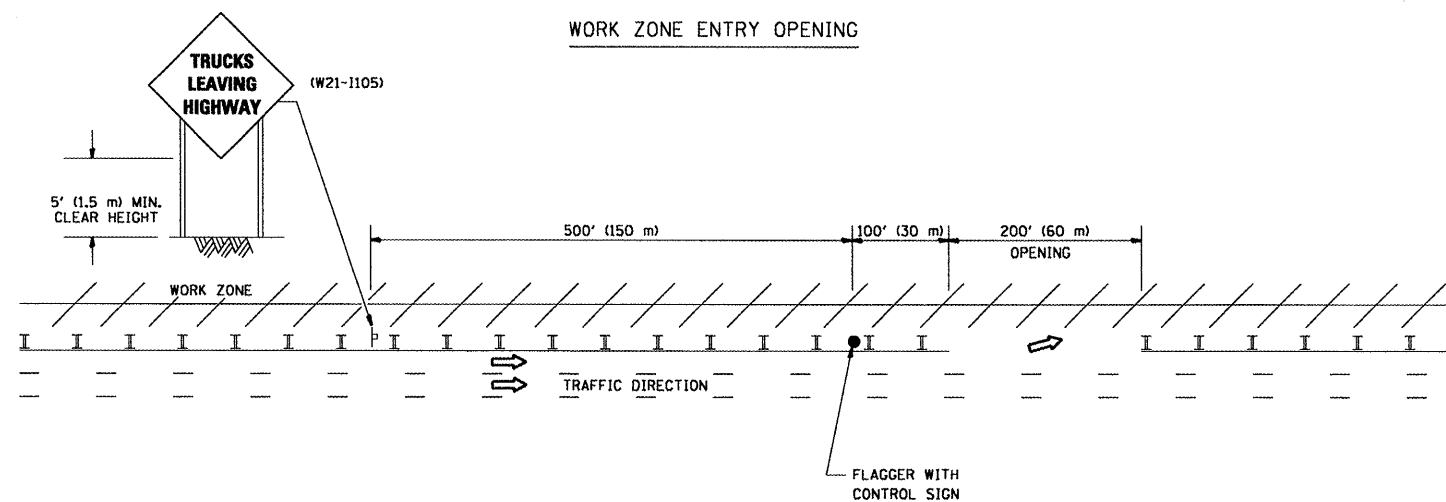


SIGNING FOR FLAGGING OPERATIONS AT WORK ZONE OPENINGS

WORK ZONE EXIT OPENING



WORK ZONE ENTRY OPENING



NOTES:

1. The Arrowboard, the Flagger Ahead trailer mounted sign, and the Trucks Leaving Highway sign shall be removed or turned away from traffic and the exit and entry openings shall be closed when the flagging operation ceases.
2. Work Zone Exit Openings should be a minimum of one half mile apart.
3. Exiting the work zone at any place other than at a Work Zone Exit Opening will be prohibited.
4. All vehicles shall enter the work zone at entry openings, using their turn signals to warn motorists

ALL DIMENSIONS ARE IN INCHES (MILLIMETERS)
UNLESS OTHERWISE SHOWN

| | | | | | | | | | | |
|-----------------------------|--------------------|------------|------------------------|---|--|--------------|-------------------------|---------------------------|--------------|---|
| FILE NAME = | USER NAME = smthk1 | DESIGNED - | REVISED - D.W.S. 08-98 | STATE OF ILLINOIS DEPARTMENT OF TRANSPORTATION | SIGNING FOR FLAGGING OPERATIONS AT WORK ZONE OPENINGS | F.A. RTE. | SECTION | COUNTY | TOTAL SHEETS | SHEET NO. |
| DETAILS\to18.dgn | DETAILS\to18.dgn | DRAWN - | REVISED - J.A.F. 04-03 | | | VAR. | 2008-050 PP | COOK | 18 | 18 |
| PLOT SCALE = 100.000' / IN. | | CHECKED - | REVISED - J.A.F. 02-06 | | | TC-18 | | CONTRACT NO. 60E99 | | |
| PLOT DATE = 6/24/2008 | | DATE - | REVISED - S.P.B. 01-07 | | | SCALE: NONE | SHEET NO. 1 OF 1 SHEETS | STA. | TO STA. | FED. ROAD DIST. NO. 1 ILLINOIS FED. AID PROJECT |