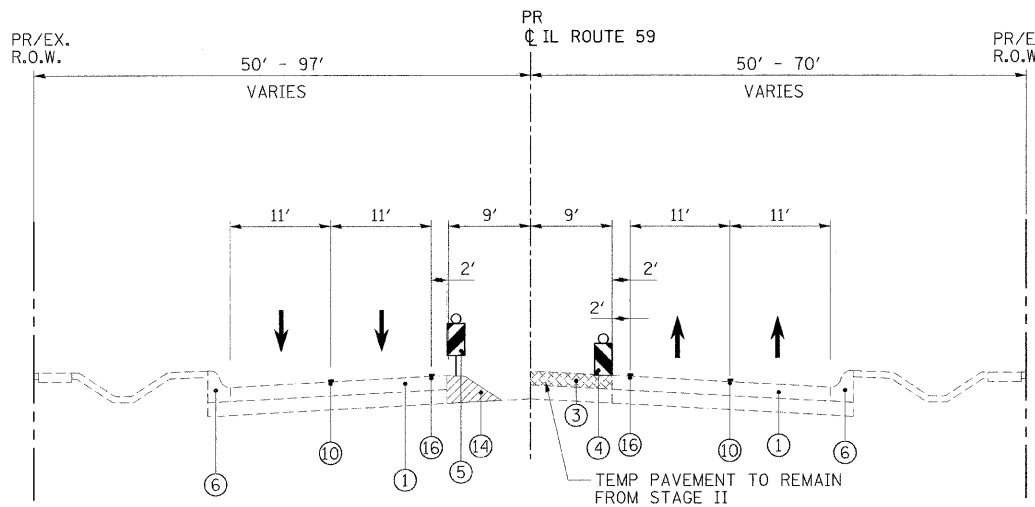
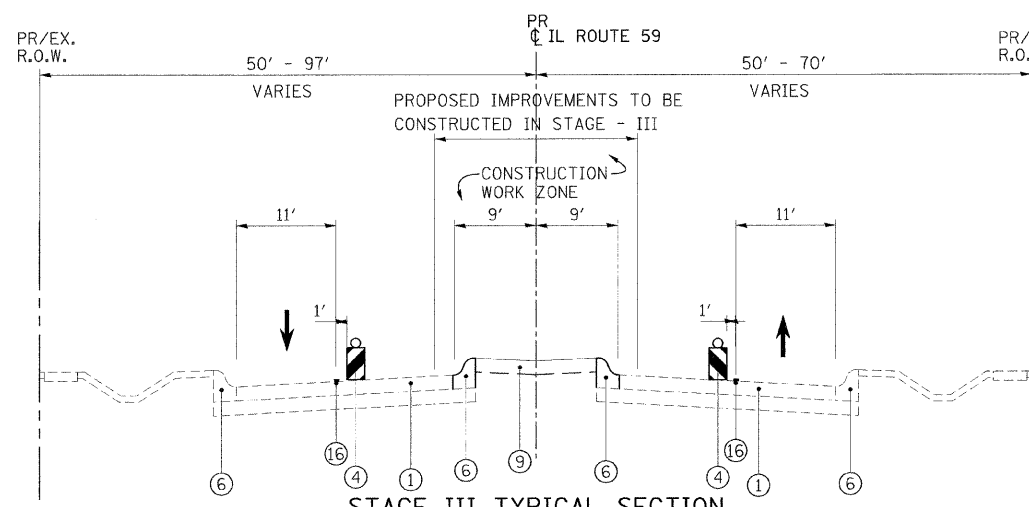


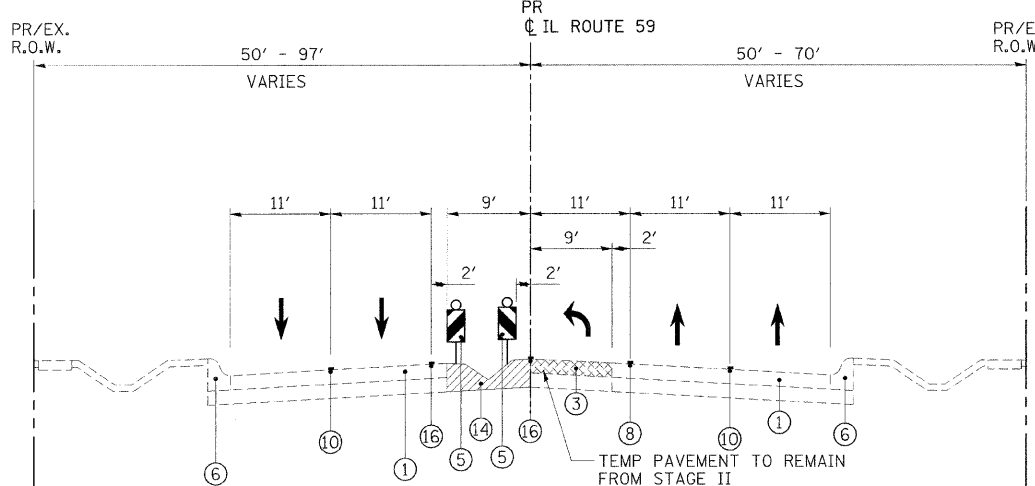
RTE	SECTION	COUNTY	TOTAL SHEETS	SHEET NO.
338	114R-1	WILL	355	80A
STA.		TO STA.		
FED. ROAD DIST. NO. 7		ILLINOIS		FED. AID PROJECT



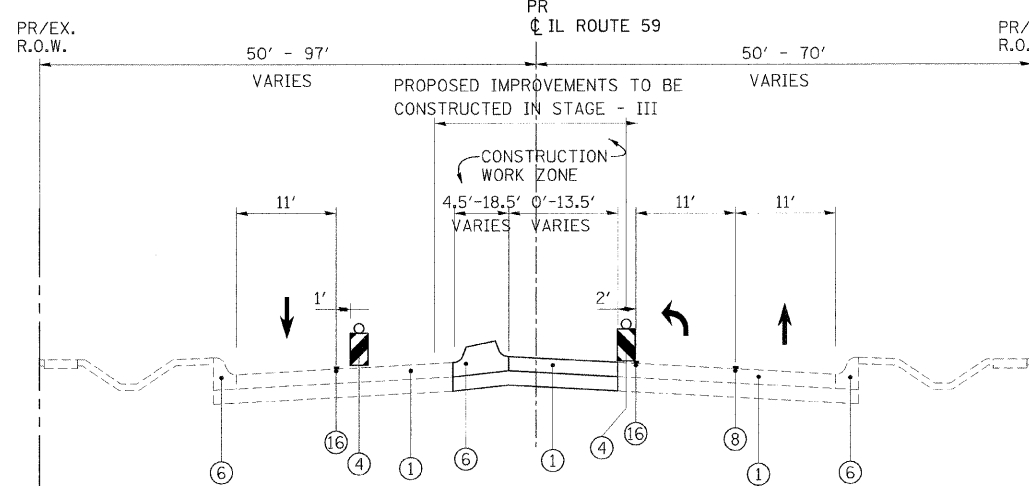
WINTER SHUTDOWN TYPICAL SECTION
 N.T.S.
 STA. 3067+50.00 TO STA. 3193+25.00
 (EXCEPT AT NB AND SB LEFT TURN LOCATIONS)



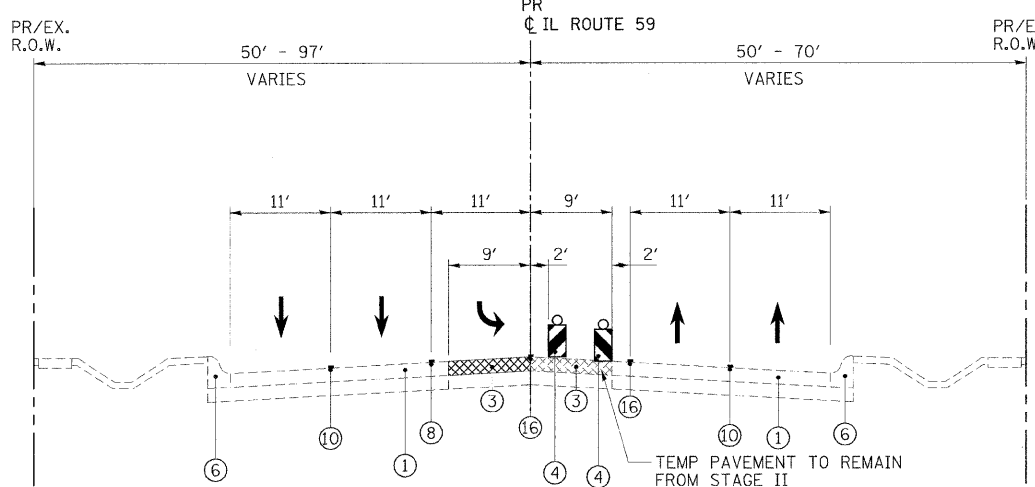
STAGE III TYPICAL SECTION
 N.T.S.
 STA. 3067+50.00 TO STA. 3193+25.00
 (EXCEPT AT NB AND SB LEFT TURN LOCATIONS)



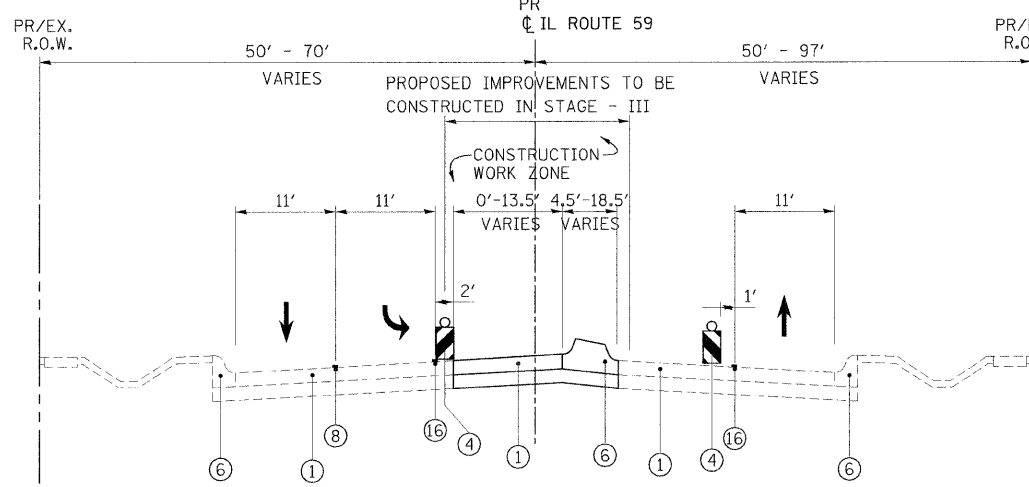
WINTER SHUTDOWN NB LEFT TURN LANE
 N.T.S.
 STA. 3071+15 TO STA. 3073+50
 STA. 3077+80 TO STA. 3081+45
 STA. 3085+31 TO STA. 3088+61
 STA. 3096+32 TO STA. 3098+67
 STA. 3118+50 TO STA. 3120+85
 STA. 3130+21 TO STA. 3134+61
 STA. 3143+79 TO STA. 3146+14
 STA. 3168+70 TO STA. 3171+70
 STA. 3182+98 TO STA. 3187+38



STAGE III NB LEFT TURN LANE
 N.T.S.
 SEE SHEET 13 FOR STATION RANGES



WINTER SHUTDOWN SB LEFT TURN LANE
 N.T.S.
 STA. 3074+90 TO STA. 3077+25
 STA. 3082+70 TO STA. 3087+35
 STA. 3089+72 TO STA. 3092+32
 STA. 3135+58 TO STA. 3139+98
 STA. 3173+00 TO STA. 3176+00
 STA. 3188+95 TO STA. 3193+25



STAGE III SB LEFT TURN LANE
 N.T.S.
 SEE SHEET 13 FOR STATION RANGES

WINTER SHUTDOWN

- TWO-WAY TRAFFIC FLOW (2 11' LANES NB & 2 11' LANES SB) IS MAINTAINED ON NEWLY CONSTRUCTED PAVEMENT.
- UTILIZE TEMPORARY PAVEMENT CONSTRUCTED IN STAGE 2 FOR NB LEFT TURN LANES. CONSTRUCT TEMPORARY PAVEMENT IN LOCATIONS SHOWN ON PLANS FOR SB LEFT TURN LANES.
- PLACE TEMPORARY PAVEMENT MARKINGS.
- NO PERMANENT LANE CLOSURES WILL BE ALLOWED DURING THIS STAGE.

STAGE III

- USE STANDARD 701602 TO MAINTAIN TWO-WAY TRAFFIC FLOW ALONG IL ROUTE 59 ON NEWLY CONSTRUCTED OUTSIDE TRAFFIC LANES. UTILIZE PERMANENT PAVEMENT MARKING WHENEVER POSSIBLE.
- REMOVE TEMPORARY PAVEMENT AND PAVEMENT MARKINGS.
- CONSTRUCT REMAINING PAVEMENT, COMBINATION CONCRETE CURB AND GUTTER, AND MEDIANS AS SHOWN ON THE PLANS.
- PLACE PERMANENT PAVEMENT MARKINGS AND RAISED REFLECTIVE PAVEMENT MARKINGS.
- INSTALL PERMANENT TRAFFIC SIGNALS.
- COMPLETE LANDSCAPING.
- OPEN ROADWAY TO TWO-WAY, FOUR-LANE TRAFFIC FLOW.

DETAILED WINTER SHUTDOWN AND STAGE III CONSTRUCTION TRAFFIC CONTROL AND PROTECTION PLANS WILL BE PROVIDED TO SUCCESSFUL BIDDER.
 QUANTITIES HAVE BEEN PROVIDED TO PERFORM THIS WORK

LEGEND

- ① PROPOSED PAVEMENT
- ② EXISTING PAVEMENT
- ③ TEMPORARY PAVEMENT (SEE PLANS)
- ④ TYPE II BARRICADE/DRUMS (SEE PLANS FOR LOCATION & SPACING)
- ⑤ VERTICAL PANELS WITH STEADY BURN MONO-DIRECTIONAL LIGHTS ADJACENT TO TEMPORARY PAVEMENT @ 50' C-C
- ⑥ PROPOSED CURB & CUTTER
- ⑦ PAVEMENT MARKING TAPE, TYPE III, 4" DOUBLE YELLOW AT 11" C-C WITH TEMPORARY RAISED REFLECTIVE PAVEMENT MARKER @ 40' C-C
- ⑧ PAVEMENT MARKING TAPE TYPE III, 6" SOLID WHITE
- ⑨ LANDSCAPED MEDIAN, AND/OR CONCRETE MEDIAN
- ⑩ PERMANENT PAVEMENT MARKING OR PAVEMENT MARKING TAPE, TYPE III, 4" WHITE SKIP DASH
- ⑪ TEMPORARY PAVEMENT MARKING 4" EDGE LINE
- ⑫ TEMPORARY PAVEMENT MARKING 6" LINE
- ⑬ TEMPORARY PAVEMENT MARKING 4" DOUBLE YELLOW AT 11" C-C WITH TEMPORARY RAISED REFLECTIVE PAVEMENT MARKER @ 40' C-C
- ⑭ AGGREGATE SHOULDER, TYPE B
- ⑮ PAVEMENT MARKING TAPE TYPE III, 4" SOLID LINE
- ⑯ PAVEMENT MARKING TAPE, TYPE III, 4" SOLID YELLOW

REVISIONS		
NAME	DATE	
REVISED MOT	5/23/08	

ILLINOIS DEPARTMENT OF TRANSPORTATION
**CONSTRUCTION PROCEDURES
 AND MAINTENANCE OF TRAFFIC
 TYPICAL SECTIONS AND NOTES**
 ILLINOIS ROUTE 59

DATE: 3/18/08
 DRAWN BY: NM, RM
 CHECKED BY: AS



DATE: _____
 BY: _____
 CHECKED: _____
 DATE: _____
 BY: _____
 CHECKED: _____
 DATE: _____
 BY: _____
 CHECKED: _____

DATE: _____
 BY: _____
 CHECKED: _____
 DATE: _____
 BY: _____
 CHECKED: _____
 DATE: _____
 BY: _____
 CHECKED: _____