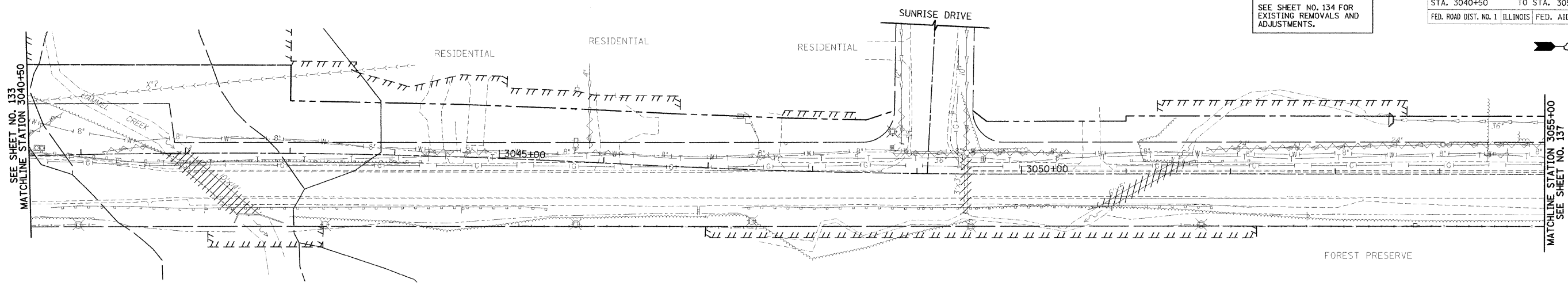


F.A.P. RTE.	SECTION	COUNTY	TOTAL SHEETS	SHEET NO.
338	114R-1	WILL	355	135
STA. 3040+50		TO STA. 3055+00		
FED. ROAD DIST. NO. 1		ILLINOIS FED. AID PROJECT		

SEE SHEET NO. 134 FOR EXISTING REMOVALS AND ADJUSTMENTS.

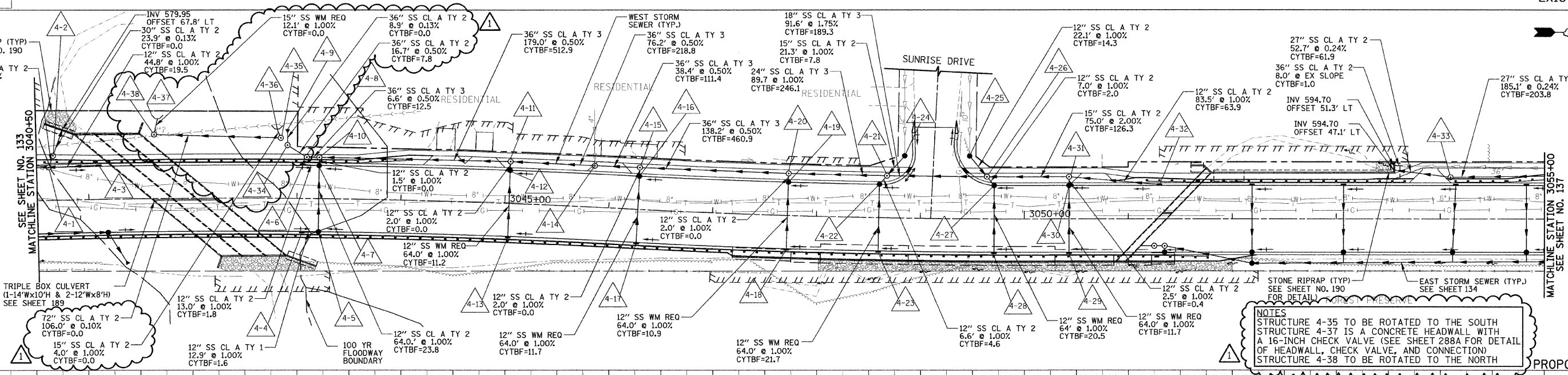


FOR DRAINAGE LEGEND SEE SHEET NO. 132

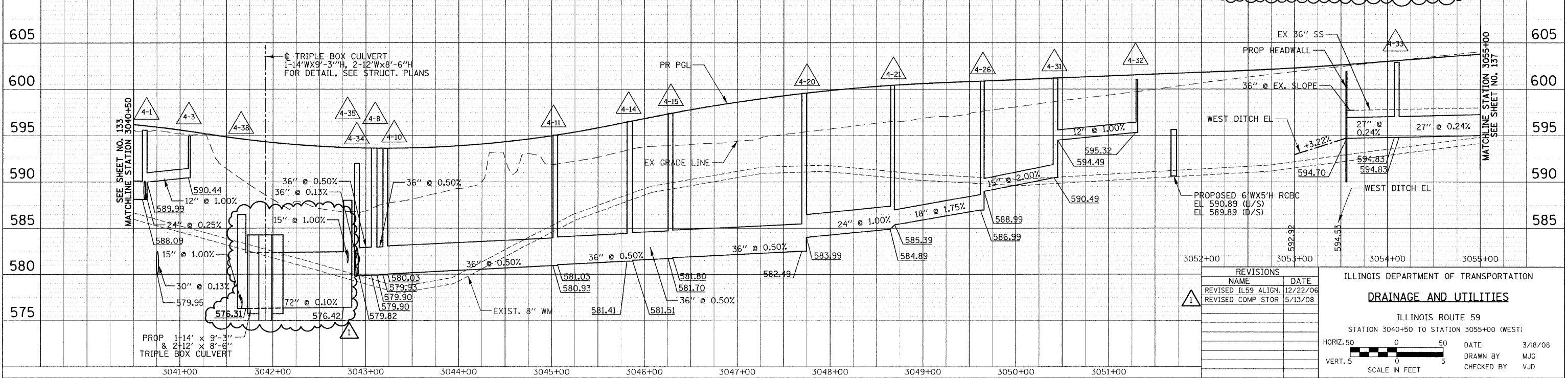
EXISTING VIEW

DATE	BY	DATE

DATE	BY	DATE



NOTES  
 STRUCTURE 4-35 TO BE ROTATED TO THE SOUTH  
 STRUCTURE 4-37 IS A CONCRETE HEADWALL WITH A 16-INCH CHECK VALVE (SEE SHEET 288A FOR DETAIL OF HEADWALL, CHECK VALVE, AND CONNECTION)  
 STRUCTURE 4-38 TO BE ROTATED TO THE NORTH



REVISIONS	
NAME	DATE
REVISED IL59 ALIGN.	12/22/06
REVISED COMP STOR	5/13/08

ILLINOIS DEPARTMENT OF TRANSPORTATION  
**DRAINAGE AND UTILITIES**  
 ILLINOIS ROUTE 59  
 STATION 3040+50 TO STATION 3055+00 (WEST)

HORIZ. 50  
 VERT. 5  
 SCALE IN FEET

DATE 3/18/08  
 DRAWN BY MJG  
 CHECKED BY VJD