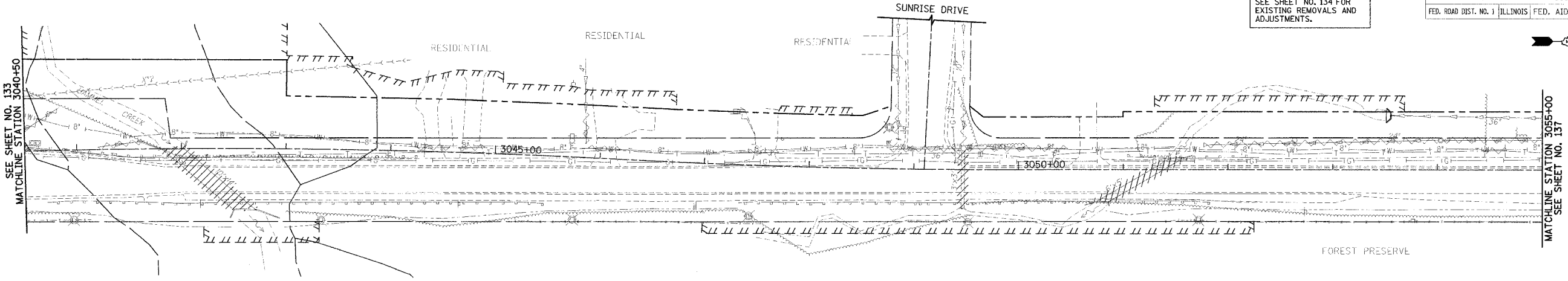


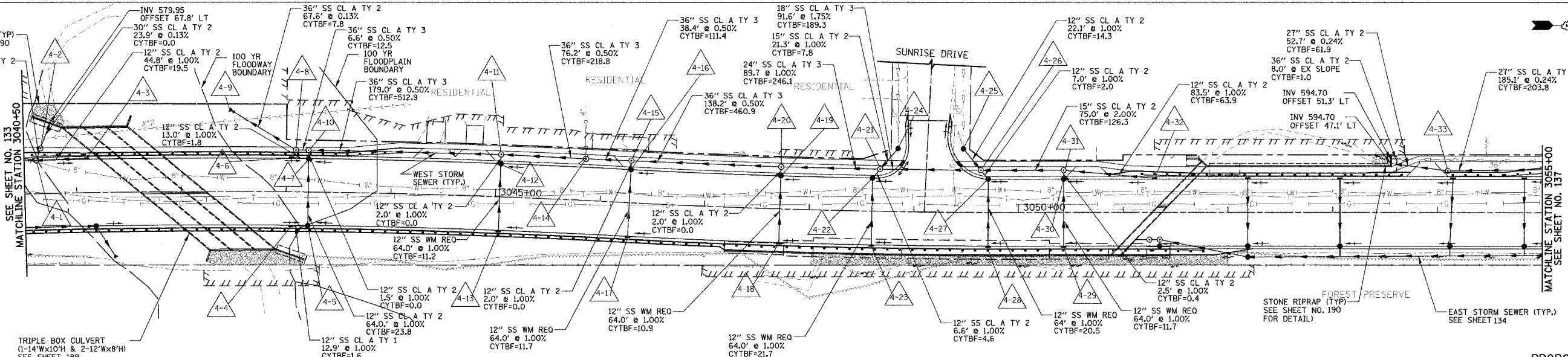
F.A.P. RTE.	SECTION	COUNTY	TOTAL SHEETS	SHEET NO.
338	114R-1	WILL	355	135
STA. 3040+50		TO STA. 3055+00		
FED. ROAD DIST. NO. 1		ILLINOIS		FED. AID PROJECT

SEE SHEET NO. 134 FOR EXISTING REMOVALS AND ADJUSTMENTS.

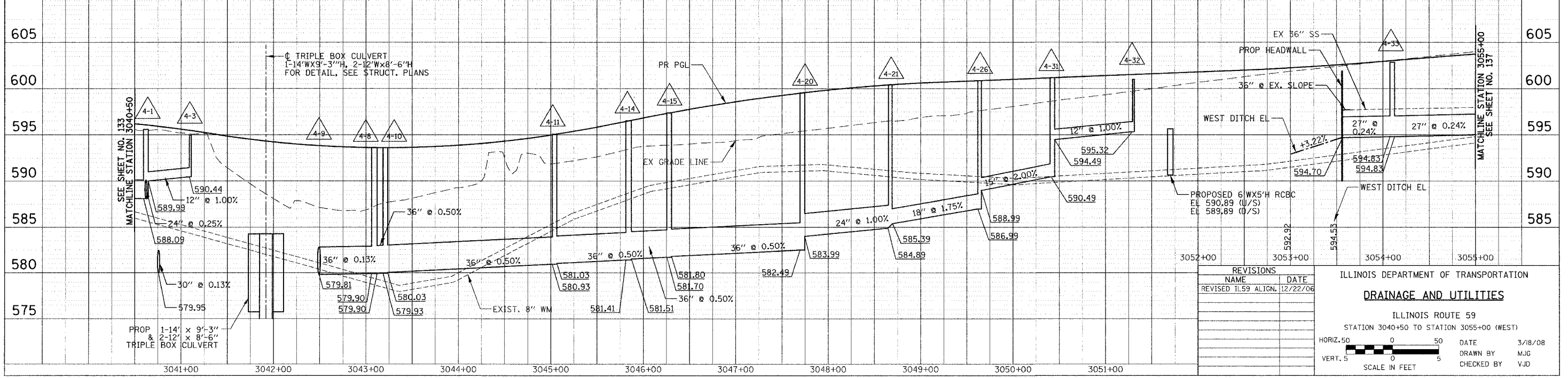


EXISTING VIEW

FOR DRAINAGE LEGEND SEE SHEET NO. 132



PROPOSED VIEW



REVISIONS	NAME	DATE
1	TL59 ALIGN.	12/22/06

ILLINOIS DEPARTMENT OF TRANSPORTATION  
**DRAINAGE AND UTILITIES**  
 ILLINOIS ROUTE 59  
 STATION 3040+50 TO STATION 3055+00 (WEST)

HORIZ. 50' SCALE  
 VERT. 5' SCALE

DATE: 3/18/08  
 DRAWN BY: M/G  
 CHECKED BY: V/JD

DATE	BY	REVISIONS