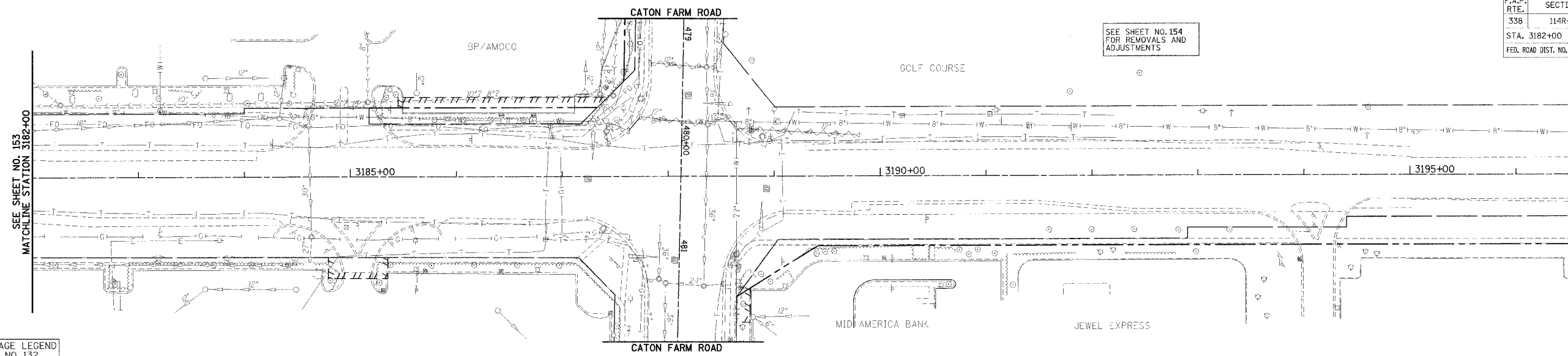


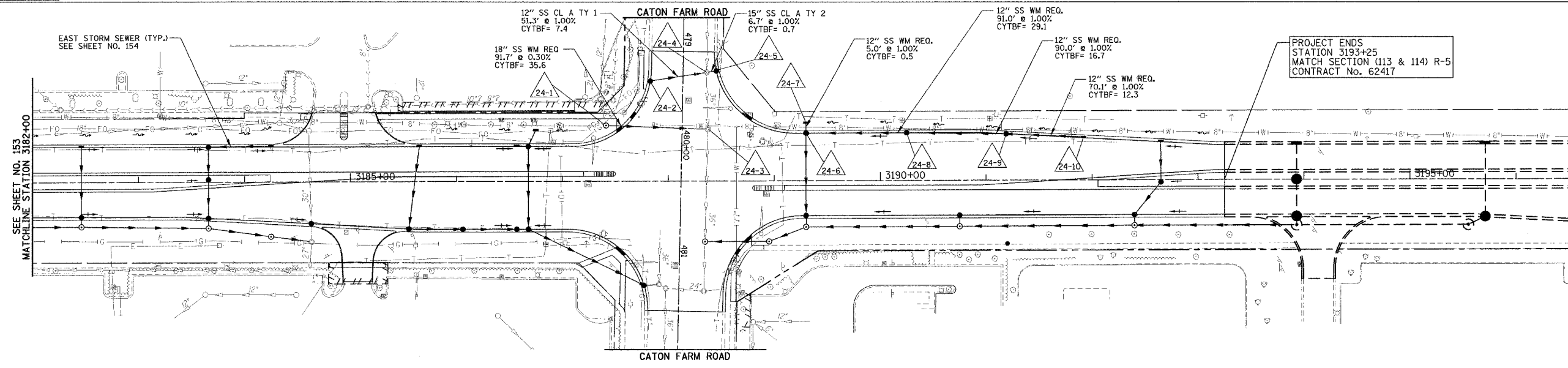
F.A.P. RTE.	SECTION	COUNTY	TOTAL SHEETS	SHEET NO.
338	114R-1	WILL	355	155
STA. 3182+00		TO STA. 3193+25		
FED. ROAD DIST. NO. 1		ILLINOIS FED. AID PROJECT		

SEE SHEET NO. 154 FOR REMOVALS AND ADJUSTMENTS



EXISTING VIEW

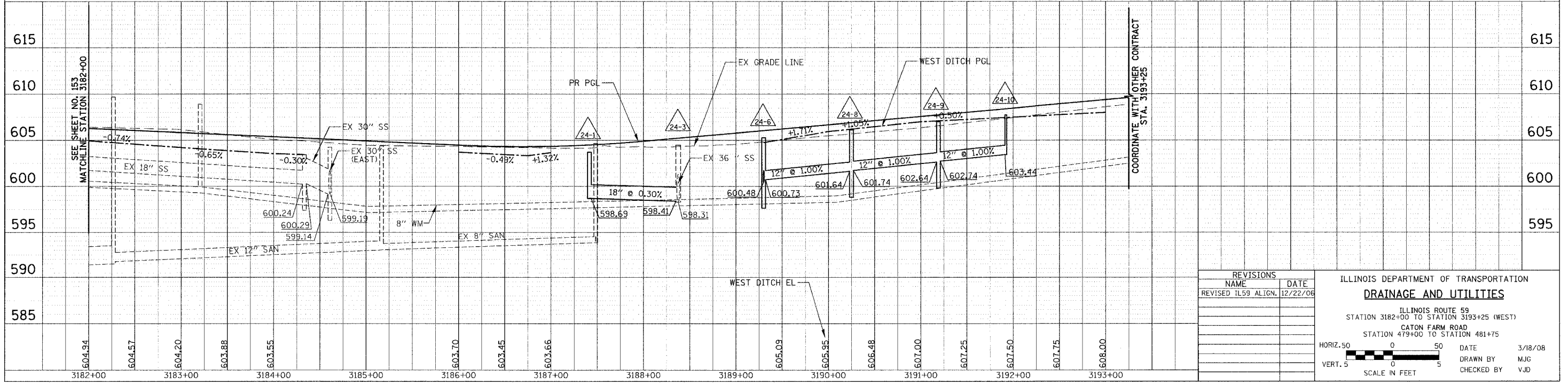
FOR DRAINAGE LEGEND SEE SHEET NO. 132



PROPOSED VIEW

DATE	BY

DATE	BY



REVISIONS	
NAME	DATE
REVISED TL59 ALIGN.	12/22/06

ILLINOIS DEPARTMENT OF TRANSPORTATION
DRAINAGE AND UTILITIES
 ILLINOIS ROUTE 59
 STATION 3182+00 TO STATION 3193+25 (WEST)
 CATON FARM ROAD
 STATION 479+00 TO STATION 481+75

HORIZ. 50 50
 VERT. 5 5
 SCALE IN FEET

DATE 3/18/08
 DRAWN BY MJG
 CHECKED BY VJD

COORDINATE WITH OTHER CONTRACT STA. 3193+25