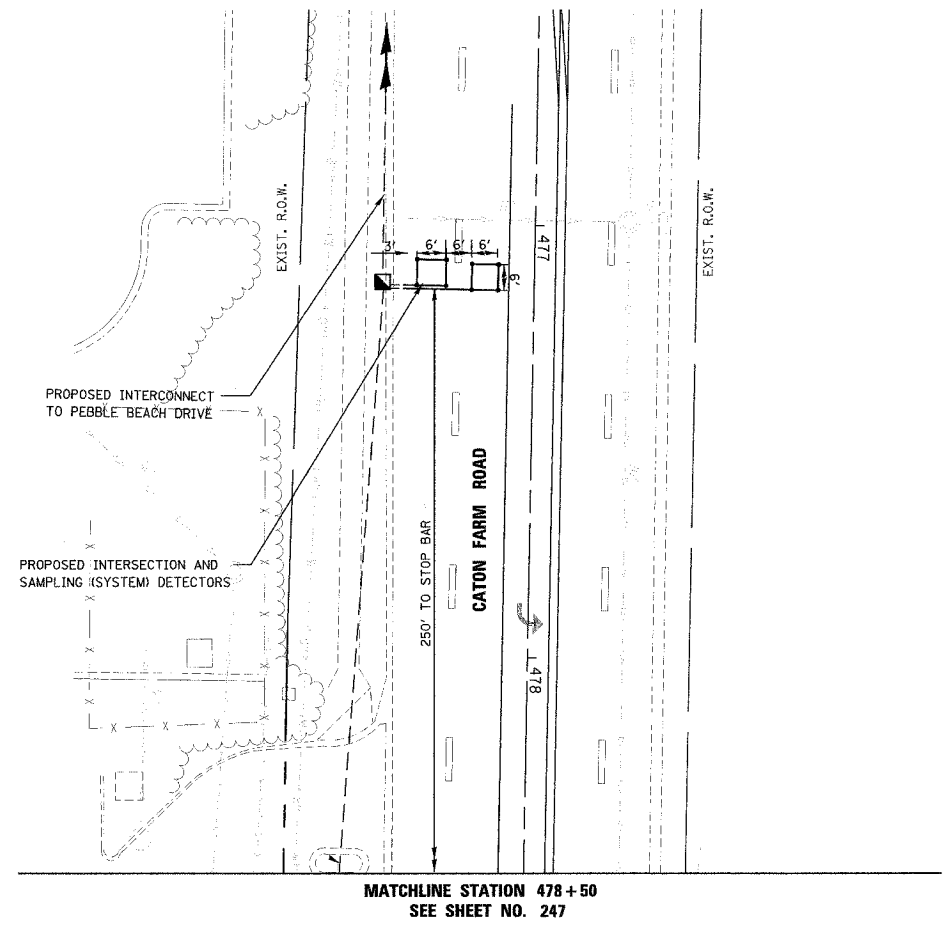


|                       |          |                  |              |           |
|-----------------------|----------|------------------|--------------|-----------|
| F.A.P. RTE.           | SECTION  | COUNTY           | TOTAL SHEETS | SHEET NO. |
| 338                   | 114R-1   | WILL             | 365          | 248       |
| STA.                  | TO STA.  |                  |              |           |
| FED. ROAD DIST. NO. 1 | ILLINOIS | FED. AID PROJECT |              |           |

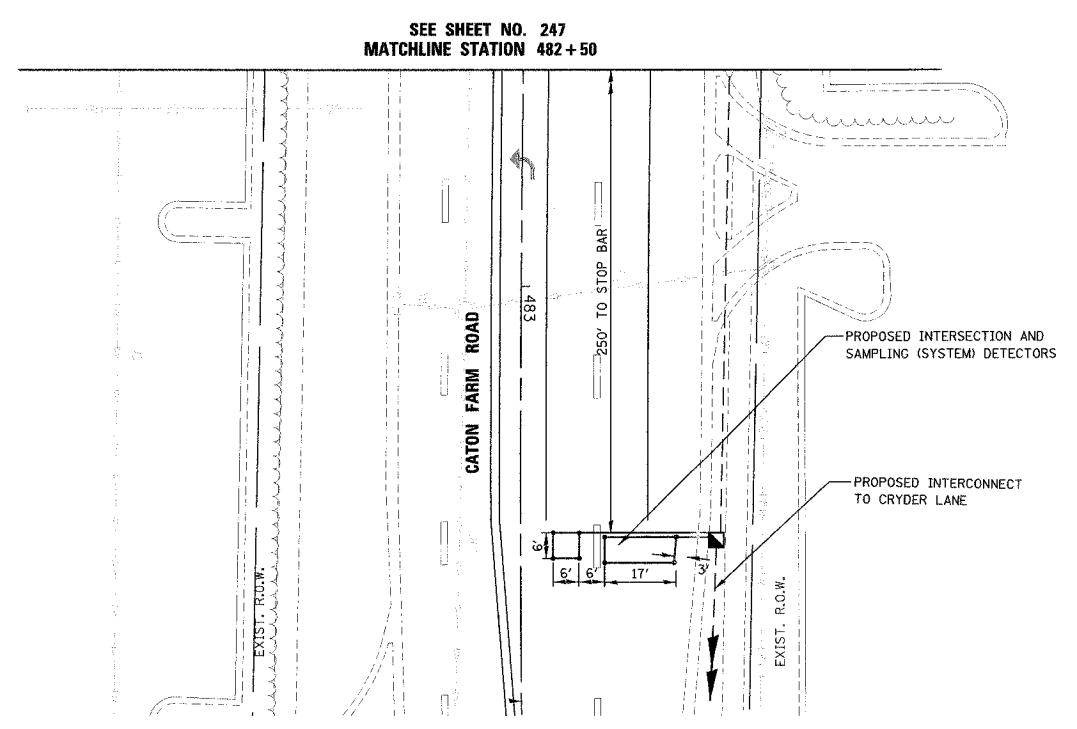


| TRAFFIC SIGNAL LEGEND  | PROPOSED | EXISTING |
|--|----------|----------|
| CONTROLLER   | [Symbol] | [Symbol] |
| SERVICE INSTALLATION   | [Symbol] | [Symbol] |
| SIGNAL HEAD  | [Symbol] | [Symbol] |
| SIGNAL HEAD WITH BACKPLATE                                   | [Symbol] | [Symbol] |
| SIGNAL HEAD, PEDESTRIAN                                      | [Symbol] | [Symbol] |
| SIGNAL POST  | [Symbol] | [Symbol] |
| MAST ARM ASSEMBLY AND POLE, STEEL                            | [Symbol] | [Symbol] |
| MAST ARM ASSEMBLY AND POLE, ALUMINUM                         | [Symbol] | [Symbol] |
| COMBINATION MAST ARM ASSEMBLY AND POLE, STEEL WITH LUMINAIRE | [Symbol] | [Symbol] |
| COMMON TRENCH  | CT       | [Symbol] |
| UNIT DUCT  | UD       | [Symbol] |
| HANDHOLE   | [Symbol] | [Symbol] |
| HEAVY DUTY HANDHOLE  | [Symbol] | [Symbol] |
| DOUBLE HANDHOLE  | [Symbol] | [Symbol] |
| G.S. CONDUIT IN TRENCH(T) OR PUSHED (P)                      | [Symbol] | [Symbol] |
| PEDESTRIAN PUSH BUTTON DETECTOR                              | [Symbol] | [Symbol] |
| DETECTOR LOOP  | [Symbol] | [Symbol] |
| PREFORMED DETECTOR LOOP                                      | [Symbol] | [Symbol] |
| CAST IRON JUNCTION BOX                                       | [Symbol] | [Symbol] |
| EMERGENCY VEHICLE SYSTEM DETECTOR                            | [Symbol] | [Symbol] |
| CONFIRMATION BEACON  | [Symbol] | [Symbol] |
| SIGNAL HEAD OPTICALLY PROGRAMMED                             | [Symbol] | [Symbol] |
| CONDUIT SPLICE   | [Symbol] | [Symbol] |
| WOOD POLE  | [Symbol] | [Symbol] |
| RACEWAY FOR MAGNETIC DETECTOR, TYPE I OR TYPE II             | [Symbol] | [Symbol] |
| VEHICLE DETECTOR, NON COMPENSATED                            | [Symbol] | [Symbol] |
| MAGNETIC TYPE  | [Symbol] | [Symbol] |
| RAILROAD CONTROL CABINET                                     | [Symbol] | [Symbol] |
| TELEPHONE CONNECTION   | [Symbol] | [Symbol] |
| ILLUMINATED SIGN, FIBER OPTIC "NO LEFT TURN"                 | [Symbol] | [Symbol] |
| ILLUMINATED SIGN, FIBER OPTIC "NO RIGHT TURN"                | [Symbol] | [Symbol] |
| MICROWAVE VEHICLE SENSOR                                     | [Symbol] | [Symbol] |
| UNINTERRUPTED POWER SUPPLY (UPS)                             | [Symbol] | [Symbol] |



THE TRAFFIC SIGNAL CONTROL EQUIPMENT FOR THIS SIGNAL SHALL BE "ECONOLITE" TO MATCH THE EXISTING ADJACENT SYSTEM.

**RESTORATION OF WORK AREA.** RESTORATION OF THE TRAFFIC SIGNAL WORK AREA OUTSIDE OF THE JOB LIMITS AS SHOWN ON THE PLANS SHALL BE INCIDENTAL TO THE RELATED PAY ITEM SUCH AS FOUNDATION, CONDUIT, HANDHOLE, TRENCH AND BACKFILL, ETC., AND NO EXTRA COMPENSATION SHALL BE ALLOWED. ALL ROADWAY SURFACES SUCH AS SHOULDERS, MEDIANS, SIDEWALKS, PAVEMENT, ETC. SHALL BE REPLACED IN KIND. ALL DAMAGE TO MOWED LAWNS SHALL BE REPLACED WITH AN APPROVED SOD, AND ALL DAMAGE TO UNMOWED FIELDS SHALL BE SEEDING IN ACCORDANCE WITH STANDARD SPECIFICATIONS 252 AND 250 RESPECTIVELY.



NOTE: ALL LOOP DETECTION SHOWN ON THIS PLAN WILL BE "PREFORMED" DETECTION LOOPS.

| REVISIONS           |          |
|---------------------|----------|
| NAME                | DATE     |
| REVISED IL59 ALIGN. | 12/22/06 |
|                     |          |
|                     |          |
|                     |          |
|                     |          |
|                     |          |
|                     |          |
|                     |          |
|                     |          |

ILLINOIS DEPARTMENT OF TRANSPORTATION  
**TRAFFIC SIGNAL  
 INSTALLATION PLAN**  
 ILLINOIS ROUTE 59 AND CATON FARM ROAD  
 SHEET 2 OF 2

SCALE 1"=20'  
 DATE 3/18/08

DRAWN BY BAR  
 DESIGNED BY FA  
 CHECKED BY KMM

|      |             |      |
|------|-------------|------|
| PLAN | DESIGNED BY | DATE |
|      |             |      |
|      |             |      |
|      |             |      |
|      |             |      |
|      |             |      |

|         |             |      |
|---------|-------------|------|
| PROFILE | DESIGNED BY | DATE |
|         |             |      |
|         |             |      |
|         |             |      |
|         |             |      |
|         |             |      |