

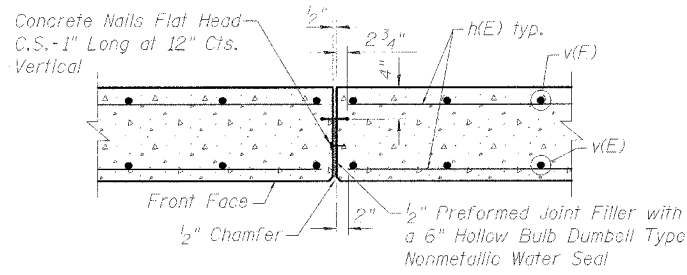
STATE OF ILLINOIS
DEPARTMENT OF TRANSPORTATION

ROUTE NO.	SECTION	COUNTY	TOTAL SHEETS	SHEET NO.
F.A.P. 338	14R-1	WILL	355	271
FED. ROAD DIST. NO. 7	ILLINOIS	FED. AID PROJECT		

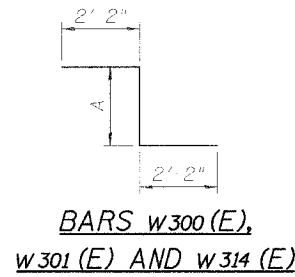
Contract # 62416

BILL OF MATERIAL

Bar	No.	Size	Length	Shape
h300(E)	270	#5	30'-5"	—
h301(E)	222	#5	27'-11"	—
h302(E)	58	#5	21'-11"	—
n300(F)	423	#5	5'-7"	—
n301(E)	159	#8	9'-9"	—
n302(E)	216	#8	13'-0"	—
n303(E)	456	#8	10'-10"	—
v300(E)	58	#5	12'-3"	—
v301(E)	29	#5	15'-11"	—
v302(E)	87	#5	19'-9"	—
v303(E)	145	#5	18'-5"	—
v304(E)	58	#5	15'-6"	—
v305(E)	23	#5	14'-3"	—
v306(E)	23	#5	11'-4"	—
v307(E)	110	#6	9'-1"	—
v308(E)	456	#6	15'-5"	—
v309(E)	81	#6	8'-7"	—
l300(E)	252	#5	10'-8"	—
l301(E)	171	#6	14'-8"	—
l302(E)	453	#8	17'-8"	—
l303(E)	114	#5	14'-8"	—
l304(E)	307	#5	17'-8"	—
l305(E)	7	#6	20'-4"	—
l306(E)	5	#5	20'-4"	—
w300(E)	32	#5	7'-10"	—
w301(E)	19	#5	6'-4"	—
w302(E)	32	#5	11'-6"	—
w303(E)	19	#5	9'-5"	—
w304(E)	112	#5	29'-2"	—
w305(E)	8	#5	27'-11"	—
w306(E)	202	#5	30'-9"	—
w307(E)	12	#5	28'-11"	—
w308(E)	114	#5	31'-6"	—
w309(F)	26	#5	21'-11"	—
w310(E)	6	#5	24'-9"	—
w311(E)	6	#5	22'-11"	—
w312(E)	6	#5	41'-2"	—
w313(E)	3	#5	28'-8"	—
w314(E)	24	#5	7'-4"	—
w315(E)	24	#5	10'-10"	—
Porous Granular Embankment, Special		Cu. Yd.		909
Structure Excavation		Cu. Yd.		3276
Concrete Structures		Cu. Yd.		839.7
Reinforcement Bars, Epoxy Coated		Pound		116,640
Geocomposite Wall Drain		Sq. Yd.		601
Pipe Underdrains for Structures 4"		Foot		415

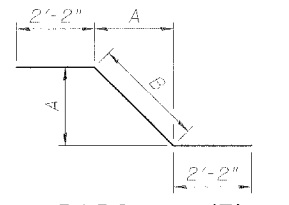


WALL EXPANSION JOINT DETAIL



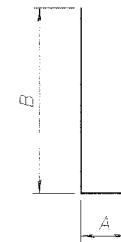
BARS w300(E), w301(E) AND w314(E)

Bar	A
w300(E)	3'-6"
w301(E)	2'-0"
w314(E)	3'-0"



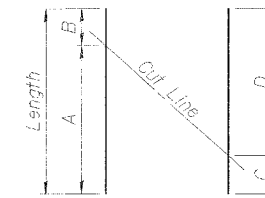
BARS w302(E), w303(E) AND w315(E)

Bar	A	B
w302(E)	5'-1"	1'-2"
w303(E)	3'-7"	5'-1"
w315(E)	4'-7"	6'-6"



BARS n300(E) THRU n303(E)

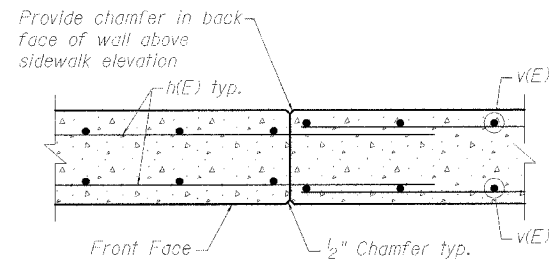
Bar	A	B
n300(E)	10"	4'-9"
n301(E)	1'-4"	8'-5"
n302(E)	1'-4"	11'-8"
n303(E)	1'-4"	9'-6"



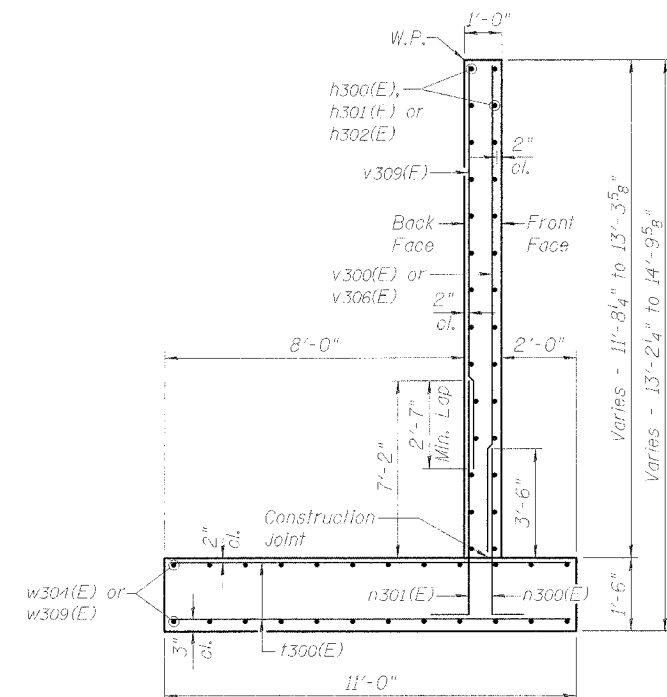
FIELD CUTTING DIAGRAM

Order bars full length. Cut as shown and use remainder of bars as shown on Sheet S2-4.

Bar	A	B	C	D	Length
l305(F)	14'-6"	5'-10"	9'-10"	10'-6"	20'-4"
l306(E)	14'-6"	5'-10"	9'-8"	10'-8"	20'-4"
w312(E)	24'-0"	17'-2"	19'-0"	22'-2"	41'-2"
w313(F)	15'-4"	13'-4"	13'-4"	15'-4"	28'-8"

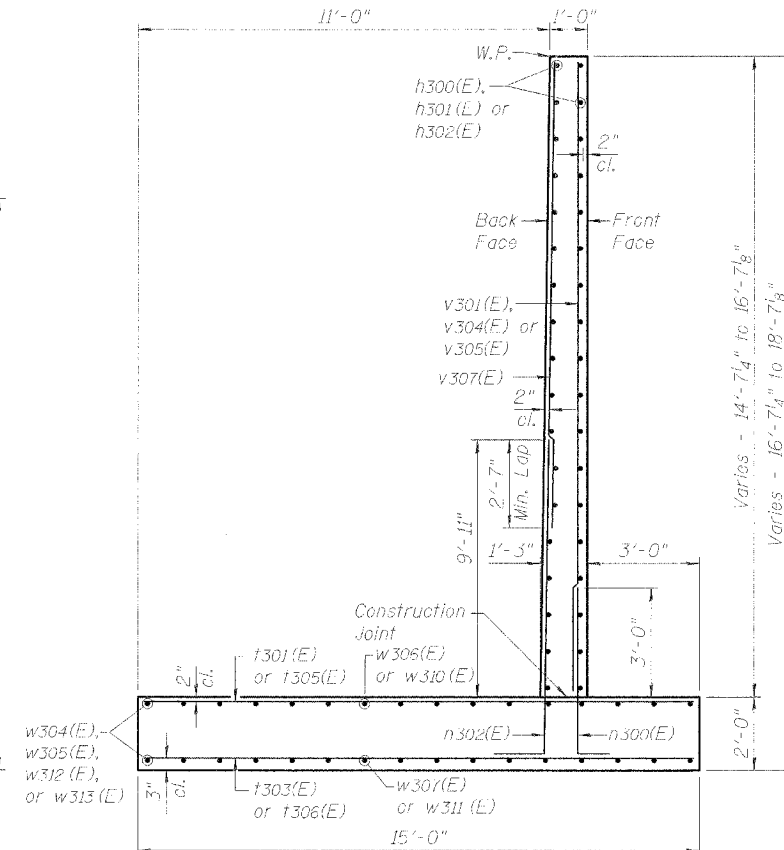


WALL CONSTRUCTION JOINT DETAIL



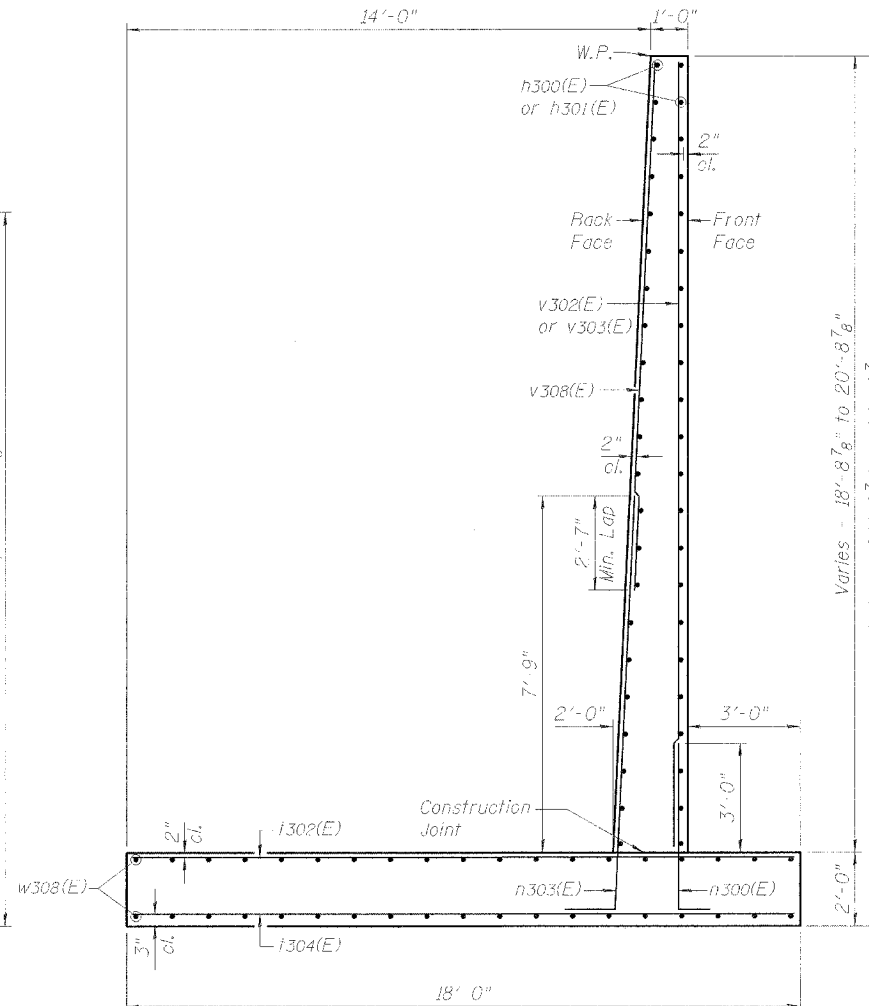
SECTION A-A

Panels 1, 2 and 15
Maximum Calculated
Bearing Pressure = 2.50 ksf



SECTION B-B

Panels 3, 12, 13 and 14
Maximum Calculated
Bearing Pressure = 2.61 ksf



SECTION C-C

Panels 4 to 11
Maximum Calculated
Bearing Pressure = 3.36 ksf

DESIGNED	SLC
CHECKED	MDS
DRAWN	MDS
CHECKED	SLC

RETAINING WALL DETAILS

RETAINING WALL ALONG IL ROUTE 59
F.A.P. ROUTE 338 SECTION 14R-1
WILL COUNTY
STATION 3047+20.51 TO STATION 3051+44.64
STRUCTURE NO. 099-WQ16



2051 PENNINGTON DRIVE, SUITE 1025
SCHAMPAIGN, IL 60173-9058
TEL (847) 605-9600
FAX (847) 605-9630