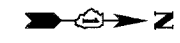
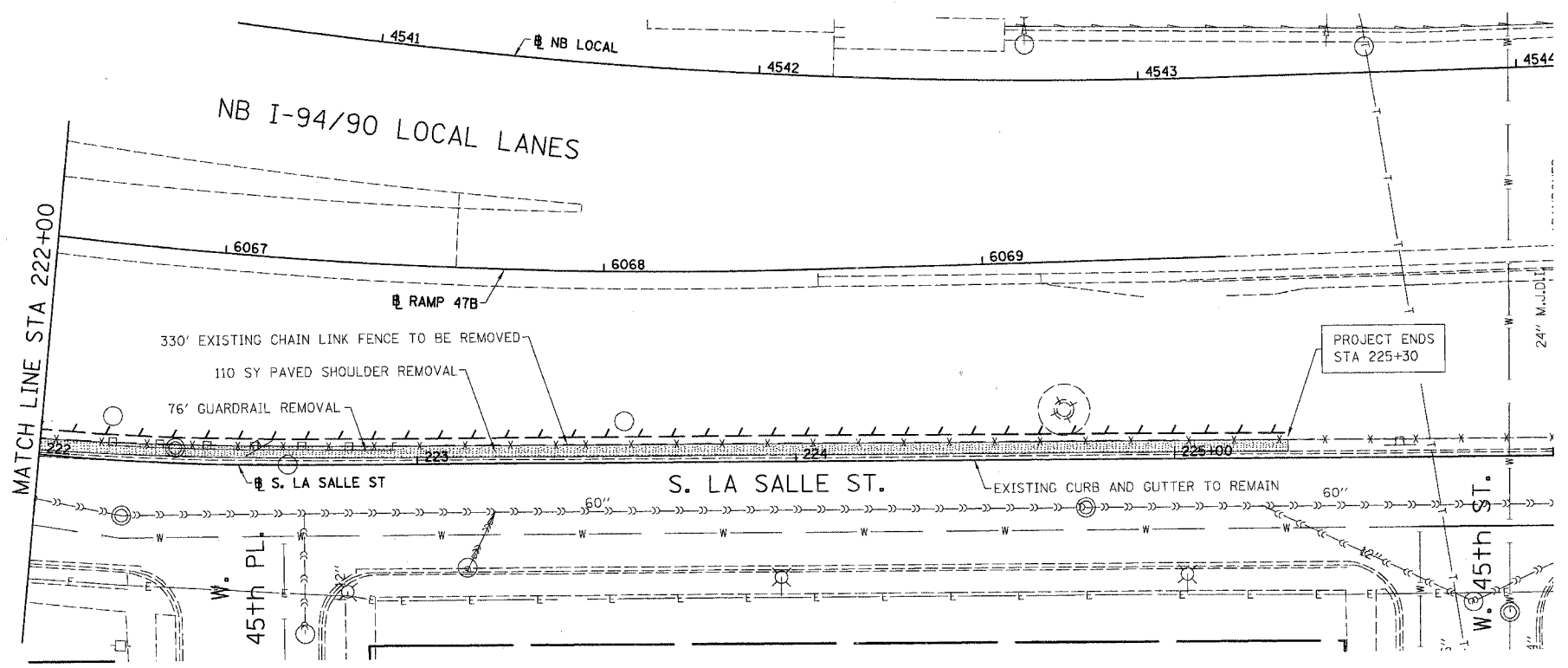


F.A.I.	SECTION	COUNTY	TOTAL SHEETS	SHEET NO.
94/90	*	COOK	25	12
STA.	TO STA.			
FED. ROAD DIST. NO.	ILLINOIS	FED. AID PROJECT		

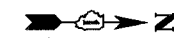
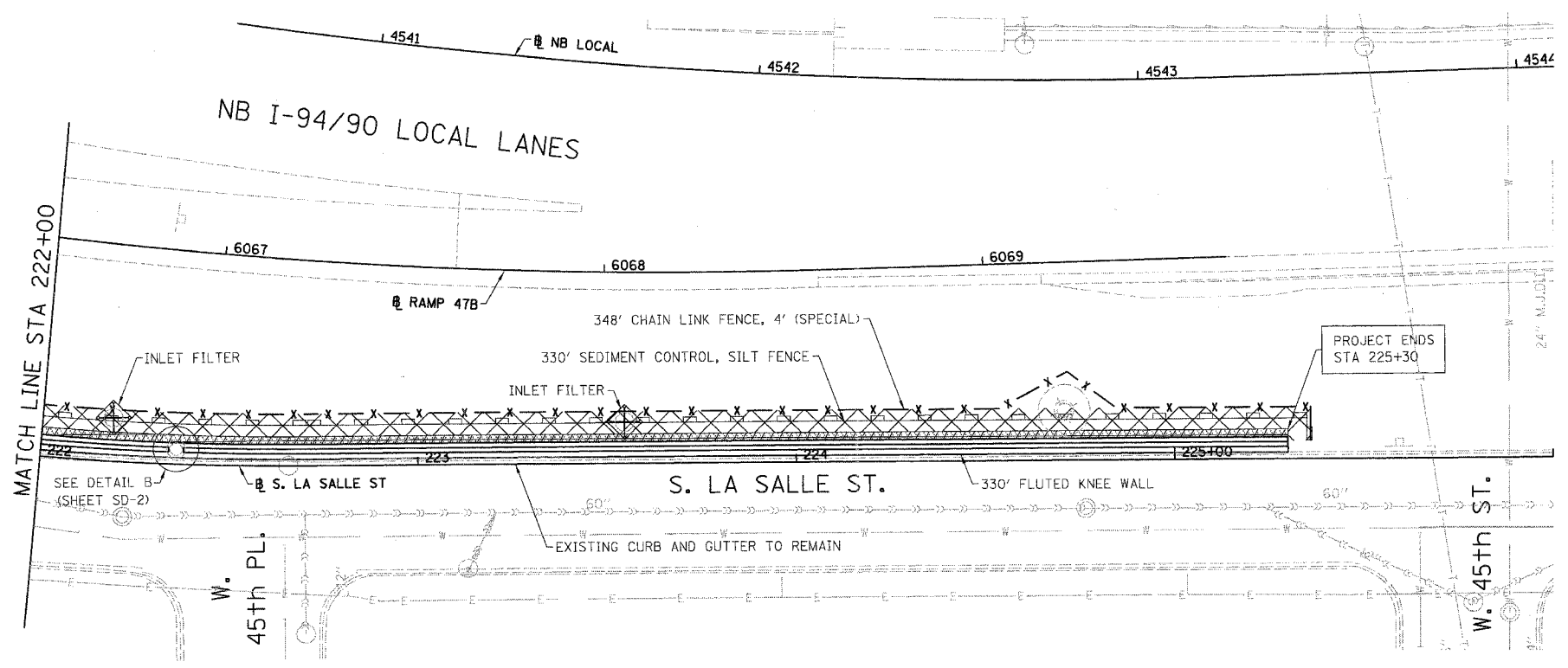
62988



LEGEND:

- PAVED SHOULDER REMOVAL
- LINEAR REMOVALS

EXISTING CONDITIONS AND REMOVAL  
PROPOSED IMPROVEMENTS

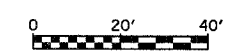


LEGEND:

- SEEDING, CLASS 2A  
EROSION CONTROL BLANKET
- SEEDING, CLASS 4 (MODIFIED)  
SEEDING CLASS 5A (MODIFIED)  
EROSION CONTROL BLANKET
- TOPSOIL FURNISH AND PLACE, 4"  
SEEDING, CLASS 2A  
EROSION CONTROL BLANKET
- TOPSOIL FURNISH AND PLACE, 12"  
SEEDING, CLASS 4 (MODIFIED)  
SEEDING, CLASS 5A (MODIFIED)  
EROSION CONTROL BLANKET

NOTES:

1. SEE STRUCTURAL DETAIL FOR FLUTED KNEE WALL DETAILS.
2. ALL POINT CALLOUTS ARE TAKEN AT THE EDGE OF THE KNEE WALL BASE.



REVISIONS	NAME	DATE

ILLINOIS DEPARTMENT OF TRANSPORTATION  
F.A.I. 94/90 (DAN RYAN EXPRESSWAY)  
NORTHBOUND KNEE WALLS (47TH ST TO 45TH ST)

EXISTING AND PROPOSED  
KNEE WALL PLANS

SCALE: 1"=20'  
DATE: 04/25/08  
DRAWN BY: JDC  
CHECKED BY: DDM

PL-3

BOWMAN, BARRETT & ASSOCIATES INC.  
CONSULTING ENGINEERS  
Chicago, Illinois  
312.228.0100  
www.bbainc.com

4/24/2008 4:59:26 PM