

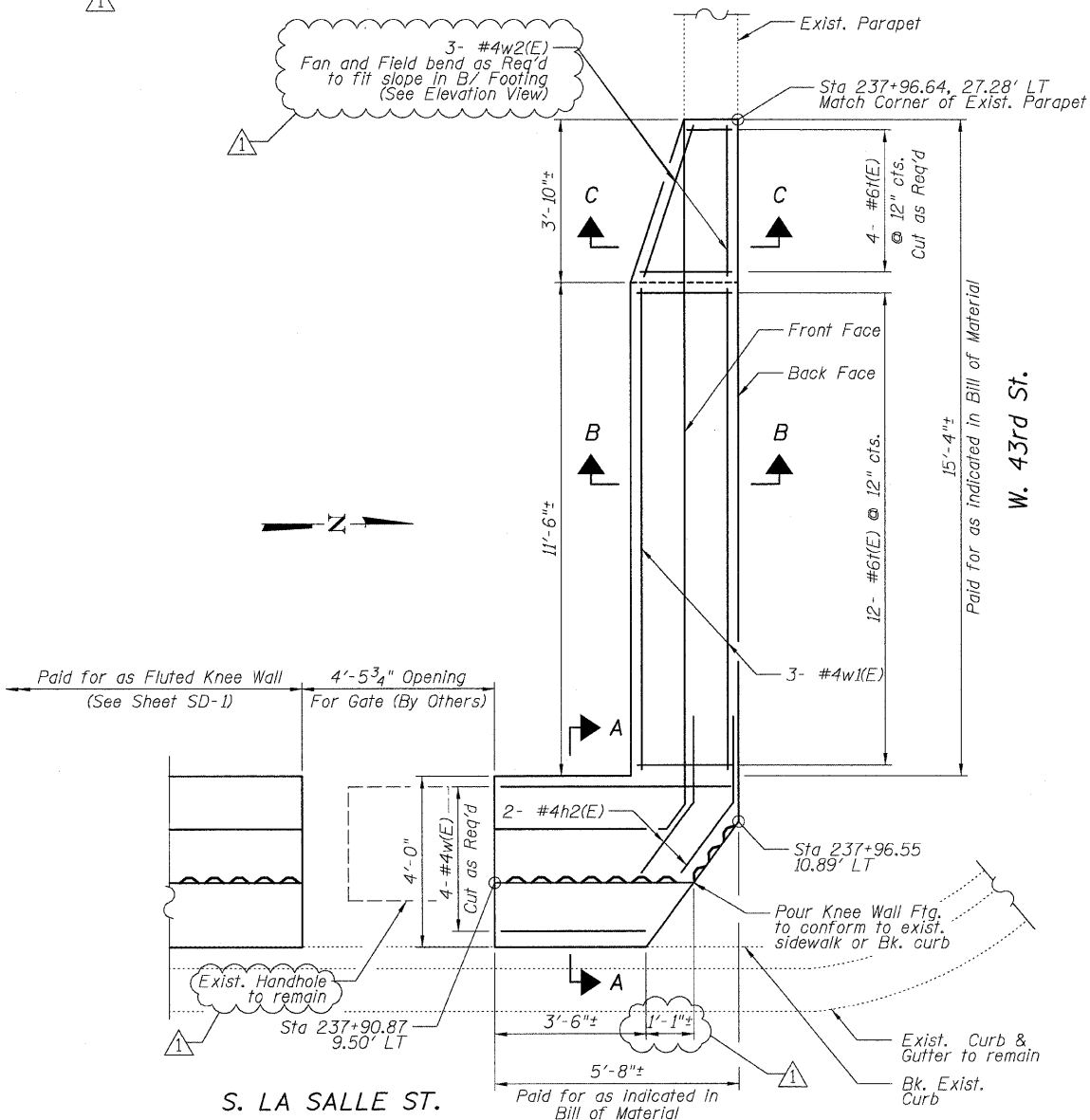
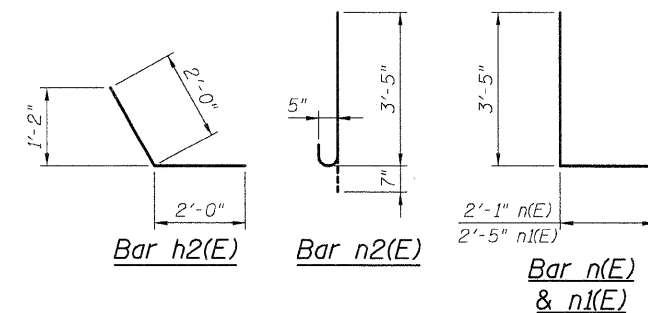
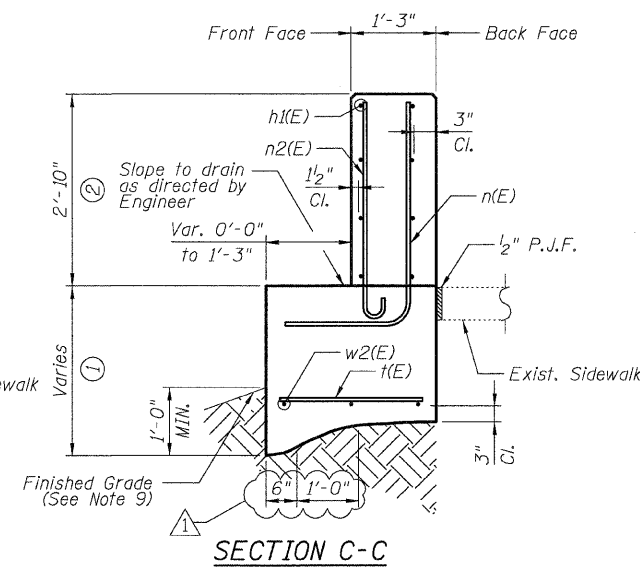
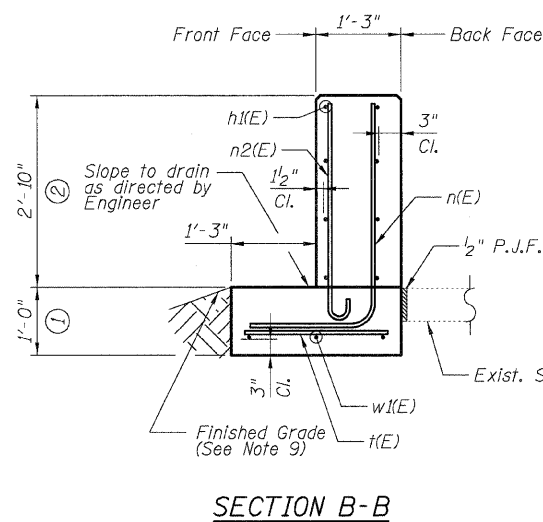
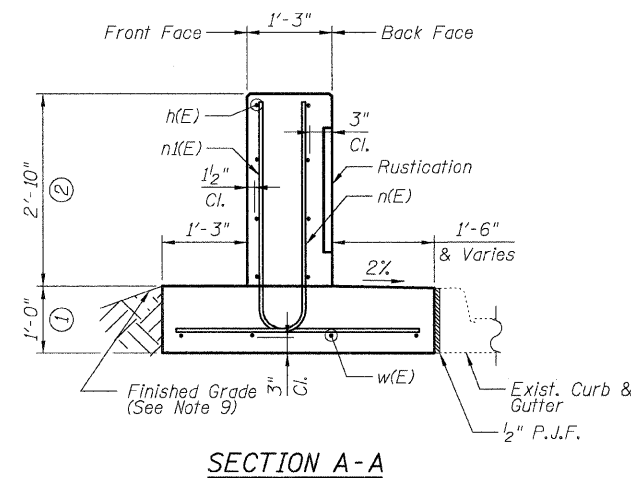
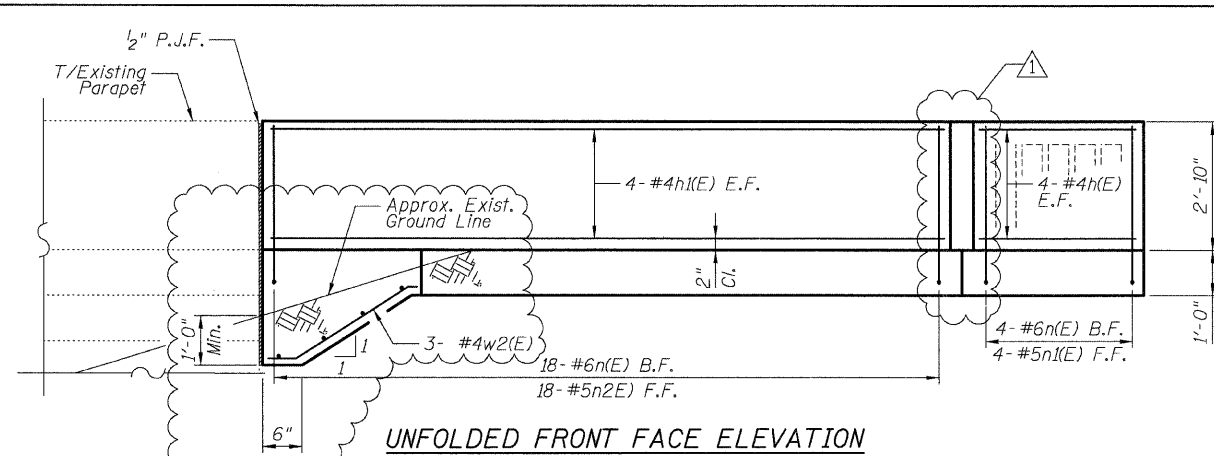
F.A.I.	SECTION	COUNTY	TOTAL SHEETS	SHEET NO.
94/90	*	COOK	30	16
STA.	TO STA.			
FED. ROAD DIST. NO.	ILLINOIS	FED. AID PROJECT		
62989				

**DETAIL D REINFORCEMENT  
SCHEDULE AND  
BILL OF MATERIAL**

Bar	No.	Size	Length	Shape
h(E)	8	#4	4'-2"	—
h1(E)	8	#4	16'-2"	—
h2(E)	2	#4	4'-0"	┘
n(E)	22	#6	5'-6"	L
n1(E)	4	#5	5'-10"	L
n2(E)	18	#5	4'-0"	┘
t(E)	16	#6	2'-2"	—
w(E)	4	#4	5'-4"	—
w1(E)	3	#4	11'-2"	—
w2(E)	3	#4	3'-6"	—
Item		Unit	Qty.	
①	Concrete Structures	Cu. Yd.	2.4	
②	Concrete Superstructure	Cu. Yd.	2.8	
	Reinforcement Bars, Epoxy Coated	Pound	500	
	Rustication Finish	Sq. Ft.	13	
	Protective Coat	Sq. Yd.	11	

**NOTES:**

- All stations and offsets measured from S. La Salle St.  $\perp$ .
- Back Face is face adjacent to Frontage Rd. and Front Face is face adjacent to Expressway.
- Concrete:  $f'c = 3500$  psi
- Provide California Finish on top of foundation between stem and Frontage Road. See Roadway Details.
- At locations where Fluted Knee Wall abuts a rigid structure, a  $\frac{1}{2}$ " thick Preformed Expansion Joint Filler conforming to the shape of the structure shall be installed between the Fluted Knee Wall and the structure.
- Apply Protective Coat to top and back face of stem and top of Frontage Road side of foundation.
- For Fluted Knee Wall standard details, see Sheet SD-1
- B.F. = Back Face (Frontage Road Side)  
F.F. = Front Face (Expressway Side)  
E.F. = Each Face
- Shape finished grade as required to match existing conditions.
- P.J.F. included in cost of concrete structures.



BOWMAN, BARRETT & ASSOCIATES INC.  
CONSULTING ENGINEERS  
Chicago, Illinois  
312.228.0100  
www.bbainc.com

REVISIONS	
NAME	DATE
ADDENDUM 1	7-16-08

SHEET SD-3  
ILLINOIS DEPARTMENT OF TRANSPORTATION  
F.A.I. 94/90 (DAN RYAN EXPRESSWAY)  
NORTHBOUND KNEE WALLS (45TH ST TO 43RD ST)  
DETAIL D  
SCALE: NTS  
DATE: 04/25/08  
DRAWN BY: TL  
CHECKED BY: BLU