

F.A.I.	SECTION	COUNTY	TOTAL SHEETS	SHEET NO.
94/90		COOK	32	6
STA.	TO STA.			
FED. ROAD DIST. NO.	ILLINOIS	FED. AID PROJECT		

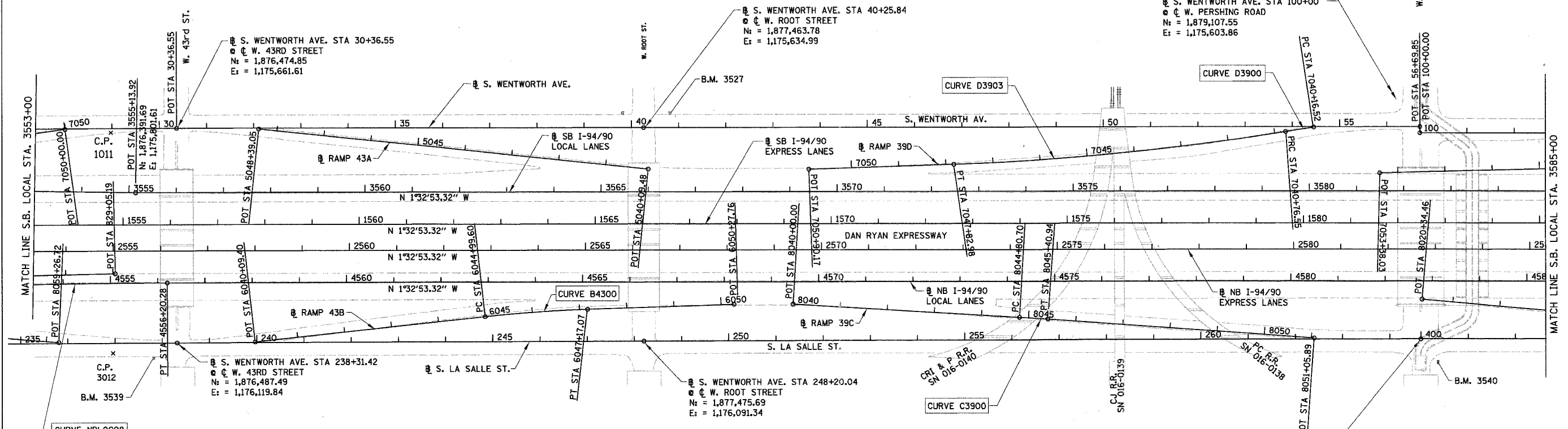
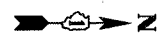
62991

PROP. CURVE D3903  
P.I. STA = 7044+30.25  
N = 1,878,475.96  
E = 1,175,675.24  
 $\Delta = 7^\circ 22' 41''$  (RT)  
D = 1° 02' 40"  
R = 5,486.00'  
T = 353.70'  
L = 706.43'  
E = 11.39'  
P.C. STA = 7040+76.55  
N = 1,878,823.36  
E = 1,175,608.75  
P.T. STA = 7047+82.98  
N = 1,878,122.90  
E = 1,175,696.57

PROP. CURVE D3900  
P.I. STA = 7040+46.54  
N = 1,878,852.84  
E = 1,175,603.11  
 $\Delta = 0^\circ 47' 26''$  (LT)  
D = 1° 19' 02"  
R = 4,350.00'  
T = 30.02'  
L = 60.03'  
E = 0.10'  
P.C. STA = 7040+16.52  
N = 1,878,882.40  
E = 1,175,597.87  
P.T. STA = 7040+76.55  
N = 1,878,823.36  
E = 1,175,608.75

S. WENTWORTH AVE. STA 56+69.85  
W. PERSHING ROAD  
N = 1,879,107.55  
E = 1,175,590.76

S. WENTWORTH AVE. STA 100+00  
W. PERSHING ROAD  
N = 1,879,107.55  
E = 1,175,603.86



PROP. CURVE NBLOC08  
P.I. STA = 4554+19.42  
N = 1,876,262.66  
E = 1,175,997.17  
 $\Delta = 1^\circ 32' 04''$  (RT)  
D = 0° 22' 55"  
R = 15,000.00'  
T = 200.89'  
L = 401.75'  
E = 1.35'  
P.C. STA = 4552+18.53  
N = 1,876,062.07  
E = 1,176,007.97  
P.T. STA = 4556+20.28  
N = 1,876,463.47  
E = 1,175,991.74

PROP. CURVE B4300  
P.I. STA = 6046+08.39  
N = 1,877,246.14  
E = 1,176,032.59  
 $\Delta = 4^\circ 21' 02''$  (RT)  
D = 2° 00' 02"  
R = 2,864.00'  
T = 108.79'  
L = 217.47'  
E = 2.07'  
 $\epsilon = 3.0\%$   
S.A. = STA 6044+79.60  
TO 6045+09.60  
S.R. = STA 6047+07.07  
TO 6047+37.07  
P.C. STA = 6044+99.60  
N = 1,877,138.36  
E = 1,176,047.37  
P.T. STA = 6047+17.07  
N = 1,877,354.72  
E = 1,176,026.03

PROP. CURVE C3900  
P.I. STA = 8045+10.82  
N = 1,878,300.35  
E = 1,176,021.08  
 $\Delta = 0^\circ 41' 25''$  (RT)  
D = 1° 08' 45"  
R = 5,000.00'  
T = 30.12'  
L = 60.24'  
E = 0.09'  
P.C. STA = 8044+80.70  
N = 1,878,270.25  
E = 1,176,020.07  
P.T. STA = 8045+40.94  
N = 1,878,330.44  
E = 1,176,022.46

S. LASALLE ST. STA 400+00.00 AH  
STA 264+66.03 BK  
W. PERSHING ROAD  
N = 1,879,121.00  
E = 1,176,043.89

- NOTES:
- AVERAGE GRID TO GROUND CONVERSION  
FACTOR = 1.000010988654360
  - FOR BENCH MARK INFORMATION, SEE SHEET ALT-16 OF ALIGNMENT PLAN SHEETS.
  - FOR RAMP P.O.T. INFORMATION, SEE SHEET ALT-16 OF ALIGNMENT PLAN SHEETS.

REVISIONS	
NAME	DATE

ILLINOIS DEPARTMENT OF TRANSPORTATION  
F.A.I. 94/90 (DAN RYAN EXPRESSWAY)  
NORTHBOUND KNEE WALLS (ROOT ST TO PERSHING RD)

ALIGNMENT PLAN

SCALE: 1"=100'  
DATE: 04/25/08  
DRAWN BY: JDC  
CHECKED BY: RS

BOWMAN, BARRETT & ASSOCIATES INC.  
CONSULTING ENGINEERS  
Chicago, Illinois  
312.228.0100  
www.bbainc.com

ALT-02  
62306 PW  
4/24/2008