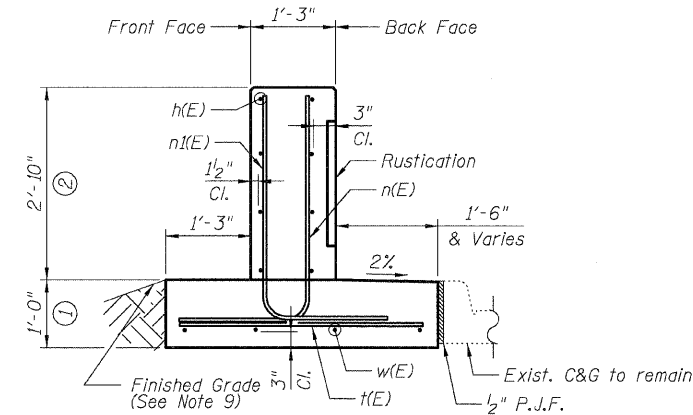


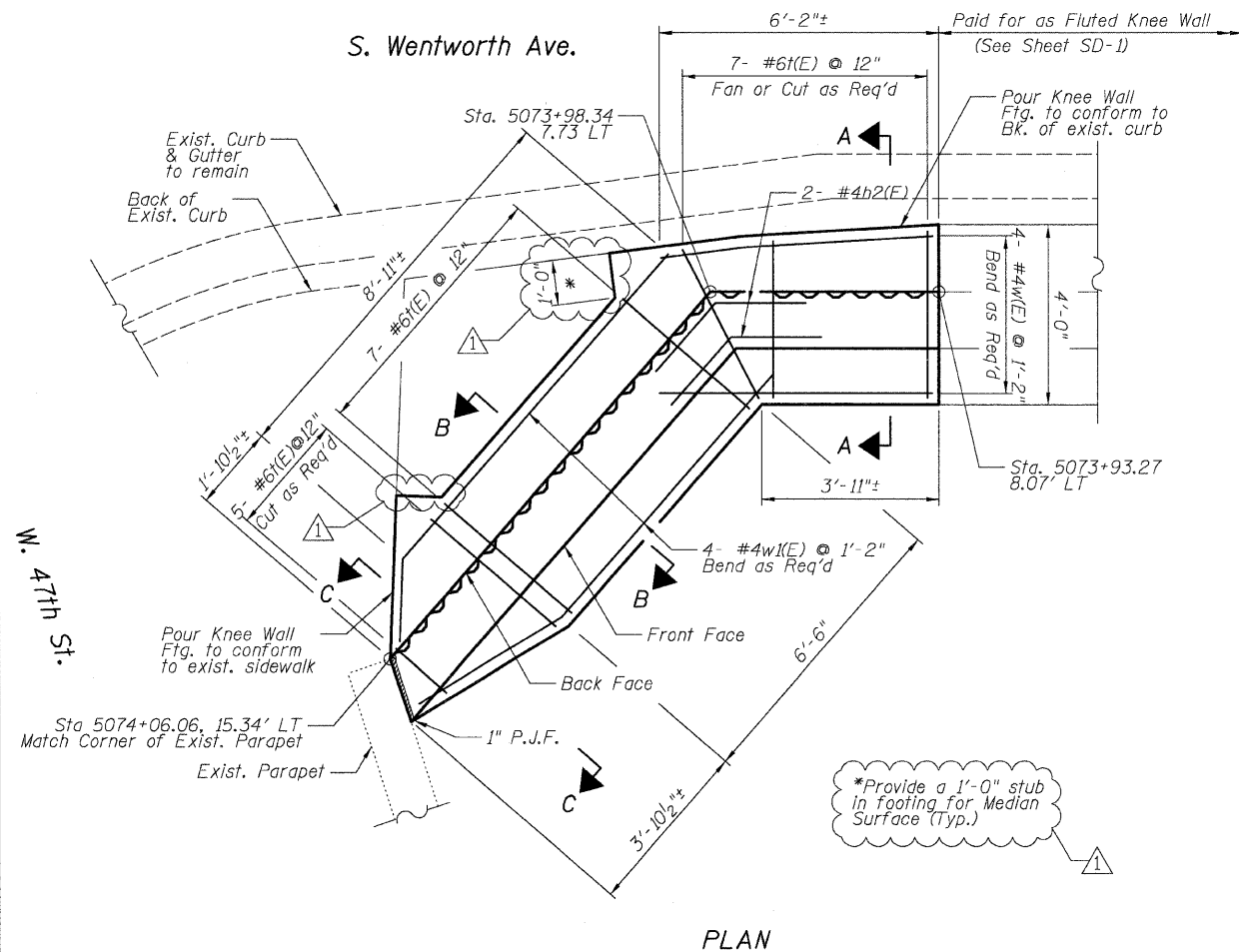
UNFOLDED FRONT FACE ELEVATION



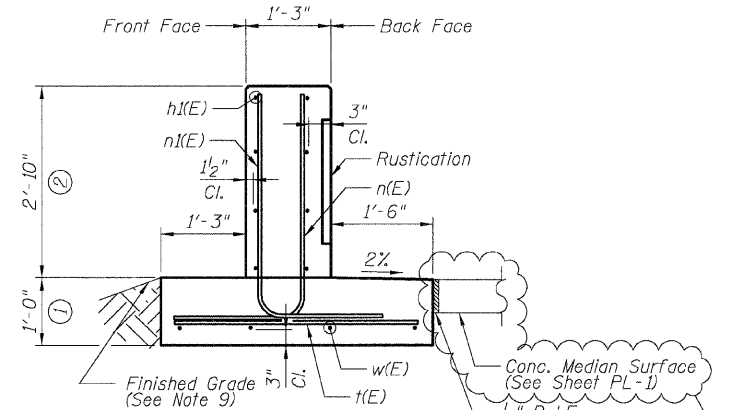
SECTION A-A

DETAIL A REINFORCEMENT SCHEDULE AND BILL OF MATERIAL

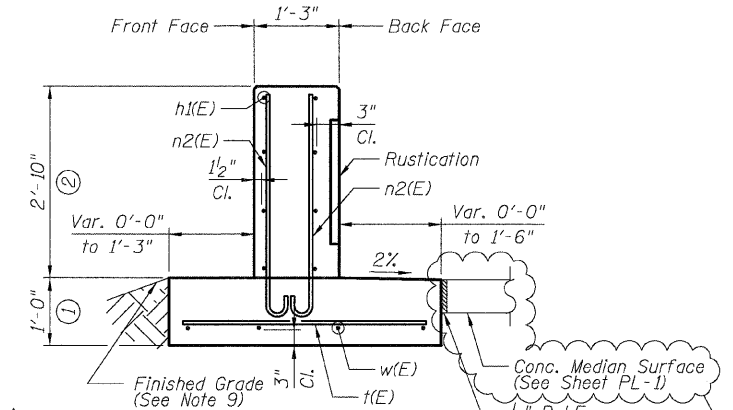
Bar	No.	Size	Length	Shape
h(E)	8	#4	4'-10"	—
h1(E)	8	#4	10'-0"	—
h2(E)	2	#4	4'-0"	—
n(E)	12	#6	5'-6"	L
n1(E)	12	#5	5'-10"	L
n2(E)	8	#6	4'-0"	U
t(E)	19	#6	3'-8"	—
w(E)	4	#4	5'-10"	—
w1(E)	4	#4	11'-0"	—
Item		Unit	Qty.	
Concrete Structures		Cu. Yd.	2.4	
Concrete Superstructure		Cu. Yd.	2.1	
Reinforcement Bars, Epoxy Coated		Pound	460	
Rustication Finish		Sq. Ft.	30	
Protective Coat		Sq. Yd.	10	



PLAN



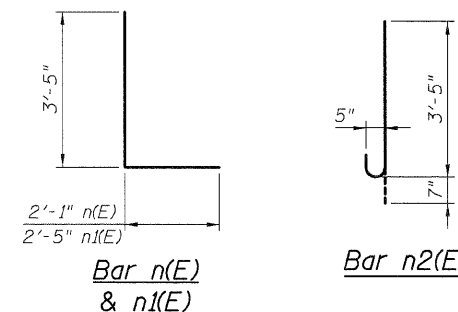
SECTION B-B



SECTION C-C

NOTES:

- All stations and offsets measured from Ramp 47A.
- Back Face is face adjacent to Frontage Rd. and Front Face is face adjacent to Expressway.
- Concrete: $f'c = 3500$ psi
- Provide California Finish on top of foundation between stem and Frontage Road. See Roadway Details.
- At locations where Fluted Knee Wall abuts a rigid Structure, a 1/2" thick Preformed Expansion Joint Filler conforming to the shape of the Structure shall be installed between the Fluted Knee Wall and the Structure.
- Apply Protective Coat to top and back face of stem and top of Frontage Road side of foundation.
- For Fluted Knee Wall standard details, see Sheet SD-1
- B.F. = Back Face (Frontage Road Side)
F.F. = Front Face (Expressway Side)
E.F. = Each Face
- Shape finished grade as required to match existing conditions.
- P.J.F. included in cost of concrete structures.



Bar n(E) & n1(E)

Bar n2(E)

BOWMAN, BARRETT & ASSOCIATES INC.
CONSULTING ENGINEERS
Chicago, Illinois
312.228.0100
www.bbainc.com

REVISIONS	NAME	DATE
ADDENDUM 1		7-16-08

ILLINOIS DEPARTMENT OF TRANSPORTATION
F.A.I. 94/90 (DAN RYAN EXPRESSWAY)
SOUTHBOUND KNEE WALLS (47TH ST TO 43RD ST)

DETAIL A

SCALE: NTS
DATE: 04/25/08

DRAWN BY: TL
CHECKED BY: BLU

SHEET SD-2