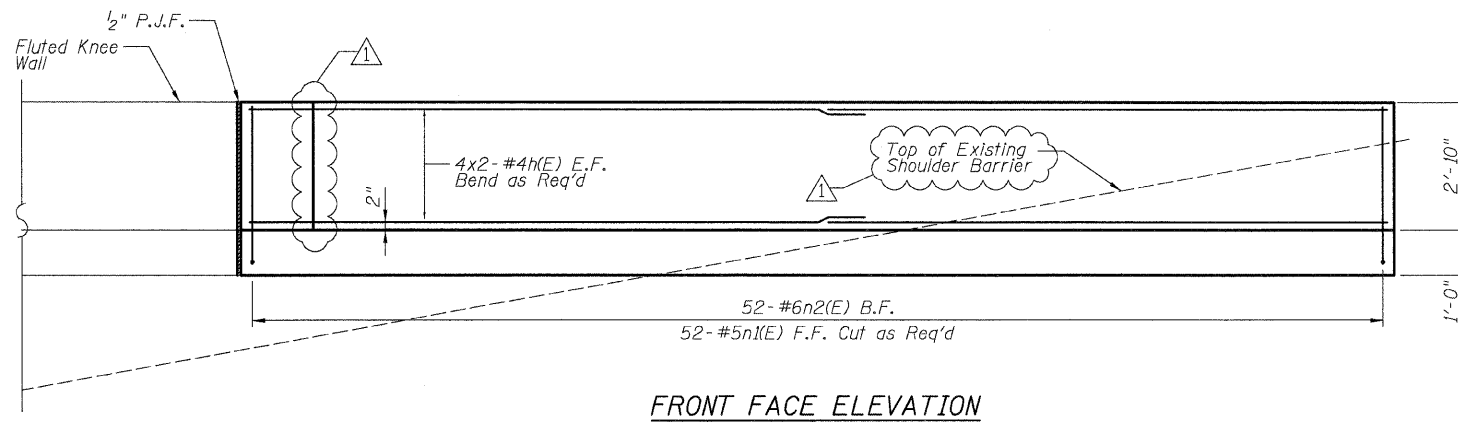
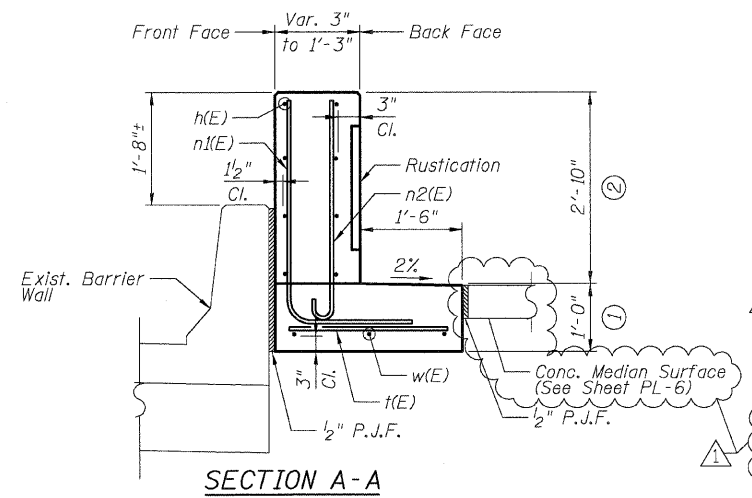


62995
**DETAIL D REINFORCEMENT
 SCHEDULE AND
 BILL OF MATERIAL**

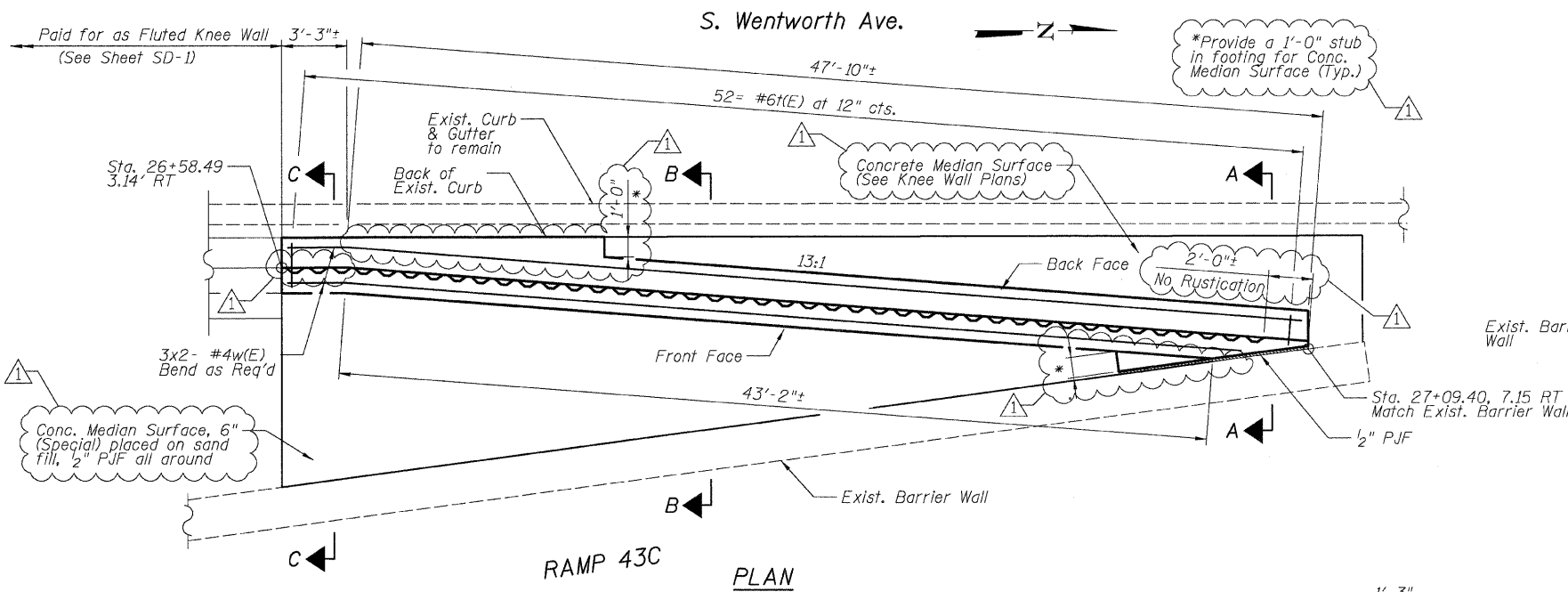
Bar	No.	Size	Length	Shape
h(E)	16	#4	26'-3"	—
n1(E)	52	#5	5'-10"	L
n2(E)	52	#6	4'-0"	—
t(E)	52	#6	2'-5"	—
w(E)	6	#4	26'-3"	—
Item		Unit	Qty.	
Concrete Structures		Cu. Yd.	5.3	
Concrete Superstructure		Cu. Yd.	6.7	
Reinforcement Bars, Epoxy Coated		Pound	1210	
Rustication Finish		Sq. Ft.	91	
Protective Coat		Sq. Yd.	32	
Concrete Median Surface, 6" (Special)		Sq. Ft.	235	
Sand Backfill		Cu. Yd.	6	



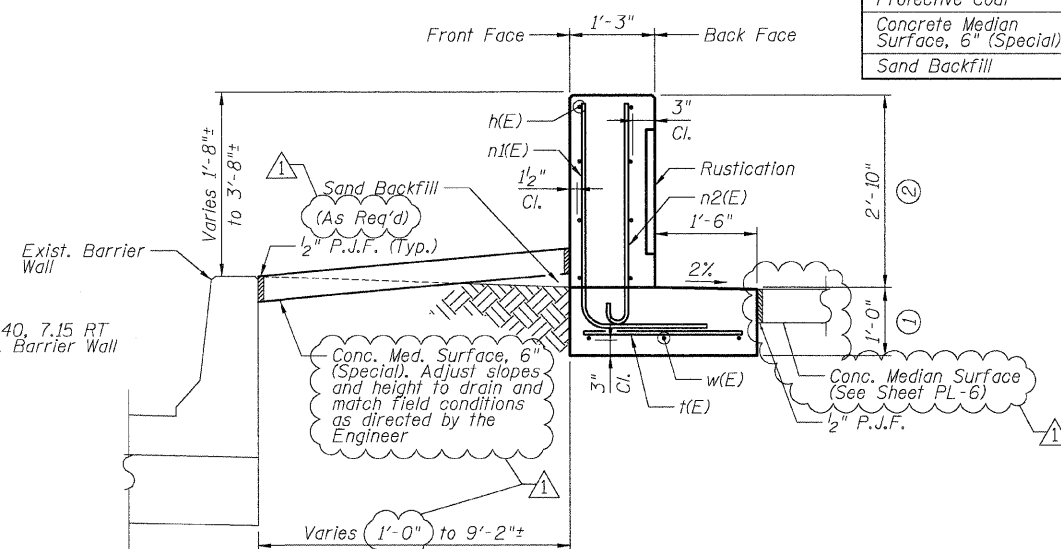
FRONT FACE ELEVATION



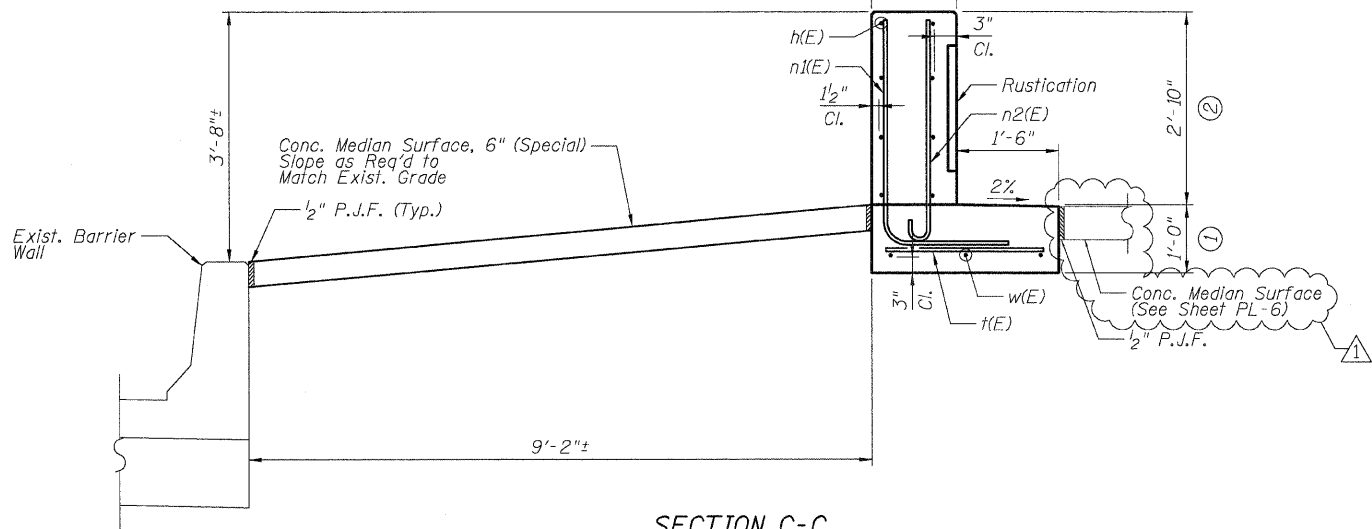
SECTION A-A



PLAN



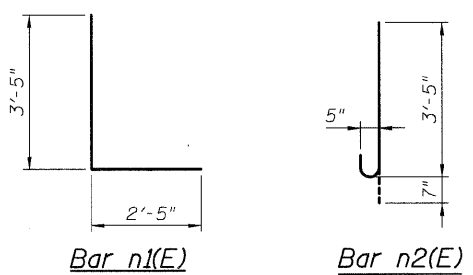
SECTION B-B



SECTION C-C

NOTES:

- All stations and offsets measured from S. Wentworth Ave. \perp .
- Back Face is face adjacent to Frontage Rd. and Front Face is face adjacent to Expressway.
- Concrete: f'c = 3500 psi
- Provide California Finish on top of Foundation between stem and Frontage Road. See Roadway Details.
- At locations where Fluted Knee Wall abuts a rigid Structure, a 2" thick Preformed Expansion Joint Filler conforming to the shape of the Structure shall be installed between the Fluted Knee Wall and the Structure.
- Apply Protective Coat to top and back face of stem and top of Frontage Road side of foundation.
- For Fluted Knee Wall standard details, see Sheet SD-1
- B.F. = Back Face (Frontage Road Side)
F.F. = Front Face (Expressway Side)
E.F. = Each Face
- Shape finished grade as required to match existing conditions.
- P.J.F. included in cost of concrete structures.



Bar n1(E)

Bar n2(E)

REVISIONS	
NAME	DATE
ADDENDUM 1	7-16-08

SHEET SD-4

ILLINOIS DEPARTMENT OF TRANSPORTATION
 F.A.I. 94/90 (DAN RYAN EXPRESSWAY)
 SOUTHBOUND KNEE WALLS (47TH ST TO 43RD ST)

DETAIL D

SCALE: NTS
 DATE: 04/25/08

DRAWN BY: TL
 CHECKED BY: BLU

BOWMAN, BARRETT & ASSOCIATES INC.
 CONSULTING ENGINEERS
 Chicago, Illinois
 312.228.0100
 www.bbainc.com

M:\660\9409\94\90\SD4\SD4.DWG 7/16/2008 5:55:49 PM