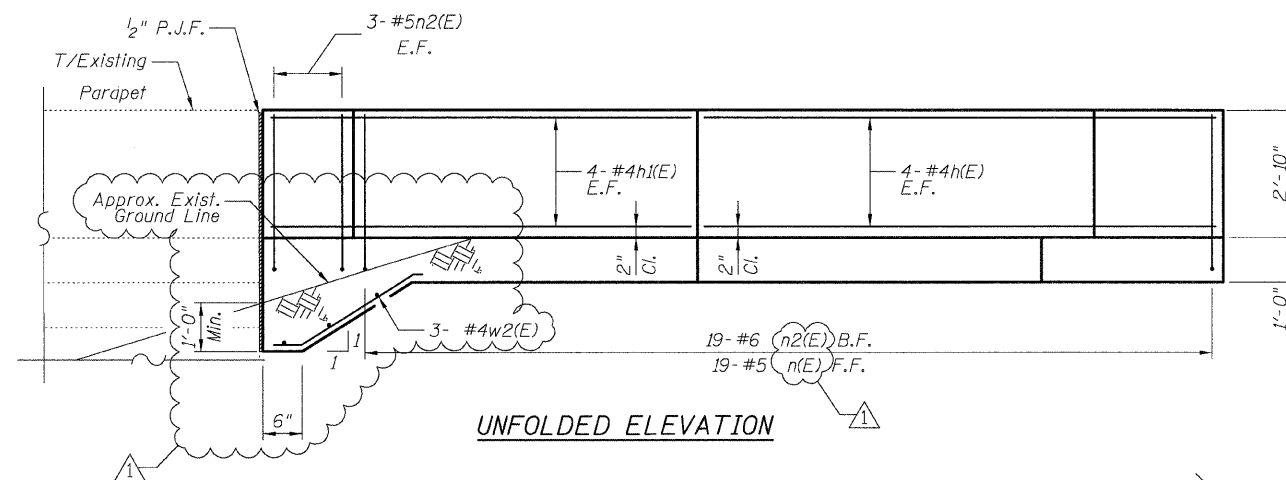


DETAIL E REINFORCEMENT SCHEDULE AND BILL OF MATERIAL

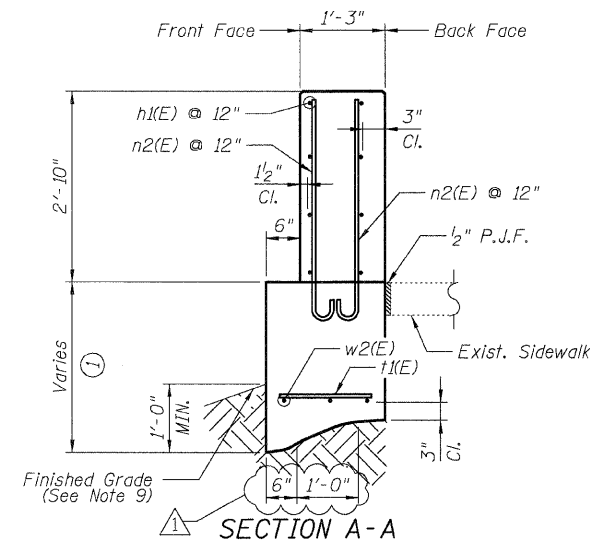
Bar	No.	Size	Length	Shape
h(E)	8	#4	9'-10"	
h1(E)	8	#4	10'-6"	
h2(E)	2	#4	4'-0"	
h3(E)	2	#4	3'-8"	
n(E)	19	#5	5'-6"	L
n2(E)	25	#6	4'-0"	
t(E)	3	#6	3'-8"	
t1(E)	19	#6	1'-5"	
w(E)	4	#4	3'-1"	
w1(E)	4	#4	16'-5"	
w2(E)	3	#4	3'-0"	
Item	Unit	Qty.		
Concrete Structures	Cu. Yd.	2.9		
Concrete Superstructure	Cu. Yd.	2.8		
Reinforcement Bars, Epoxy Coated	Pound	500		
Rustication Finish	Sq. Ft.	4		
Protective Coat	Sq. Yd.	14		

NOTES:

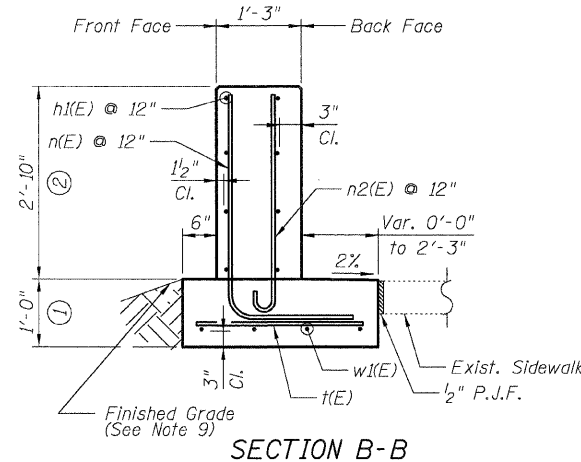
- All stations and offsets measured from S. Wentworth Ave. @.
- Back Face is face adjacent to Frontage Rd. and Front Face is face adjacent to Expressway.
- Concrete: $f'c = 3500$ psi
- Provide California Finish on top of foundation between stem and Frontage Road. See Roadway Details.
- At locations where Fluted Knee Wall abuts a rigid Structure, a 2" thick Preformed Expansion Joint Filler conforming to the shape of the Structure shall be installed between the Fluted Knee Wall and the Structure.
- Apply Protective Coat to top and back face of stem and top of Frontage Road side of foundation.
- For Fluted Knee Wall standard details, see Sheet SD-1
- B.F. = Back Face (Frontage Road Side)
F.F. = Front Face (Expressway Side)
E.F. = Each Face
- Shape finished grade as required to match existing conditions.
- P.J.F. included in cost of concrete structures.



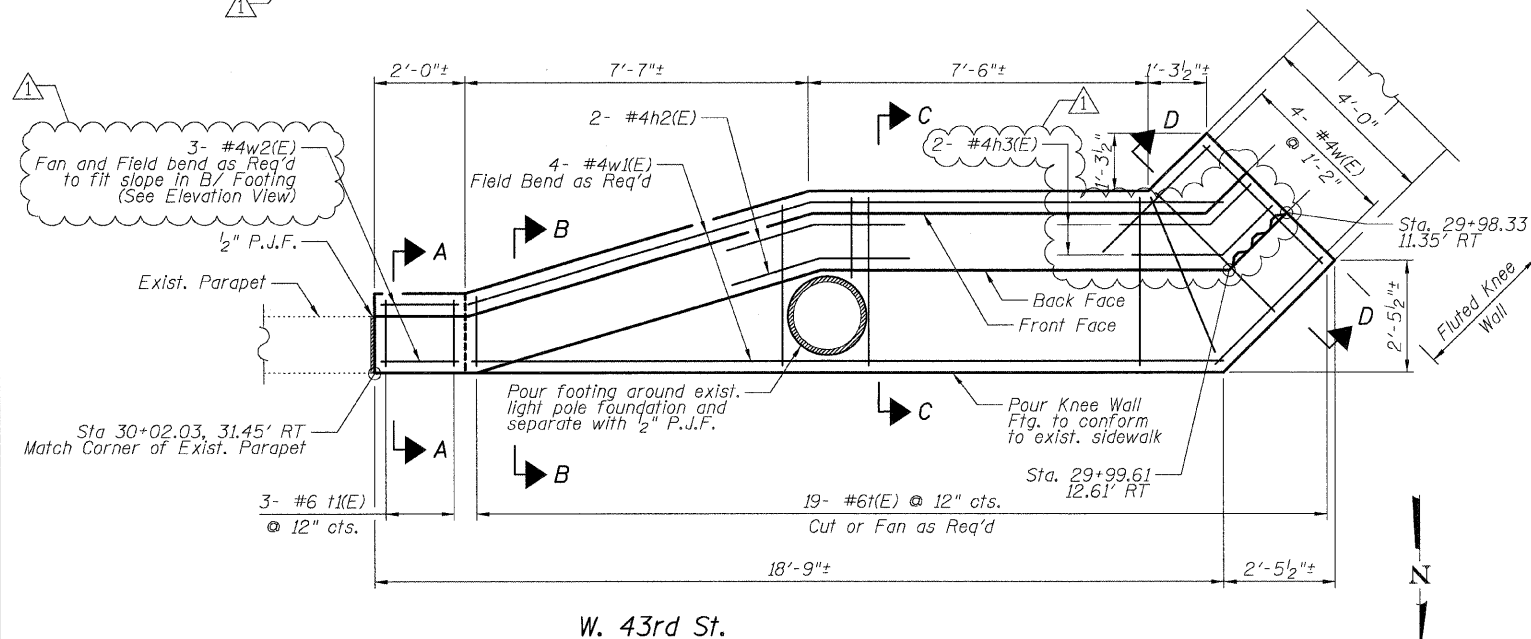
UNFOLDED ELEVATION



SECTION A-A

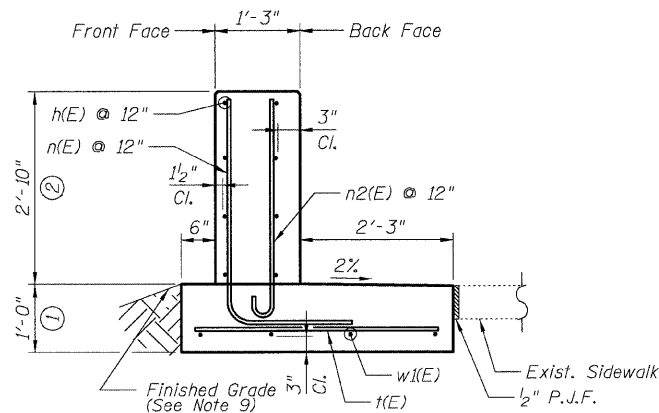


SECTION B-B

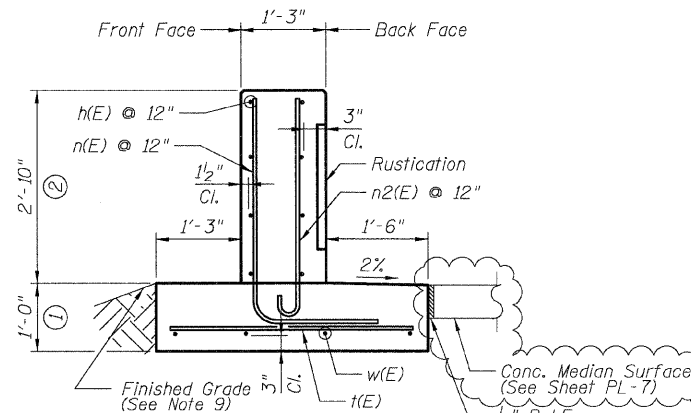


W. 43rd St.

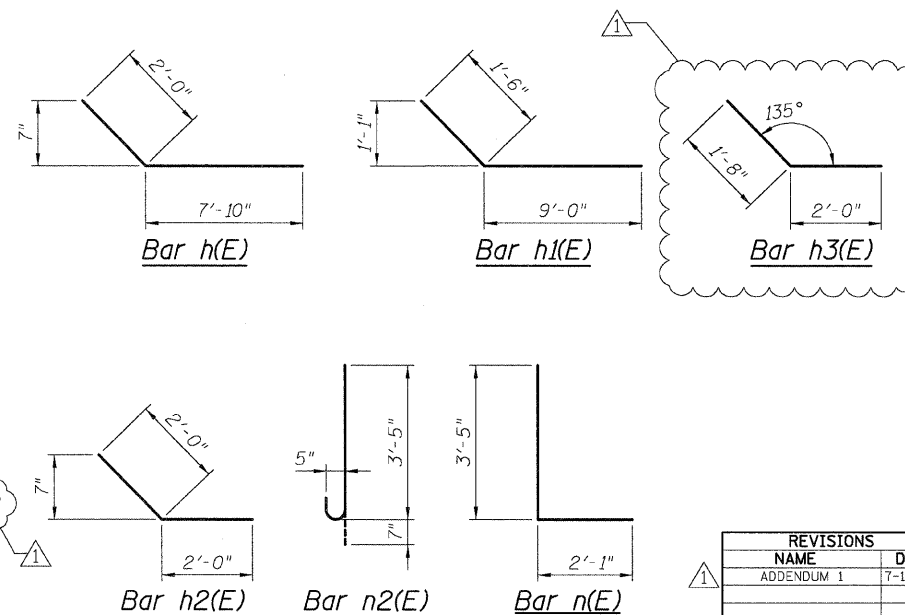
PLAN



SECTION C-C



SECTION D-D



REVISIONS	
NAME	DATE
ADDENDUM 1	7-16-08